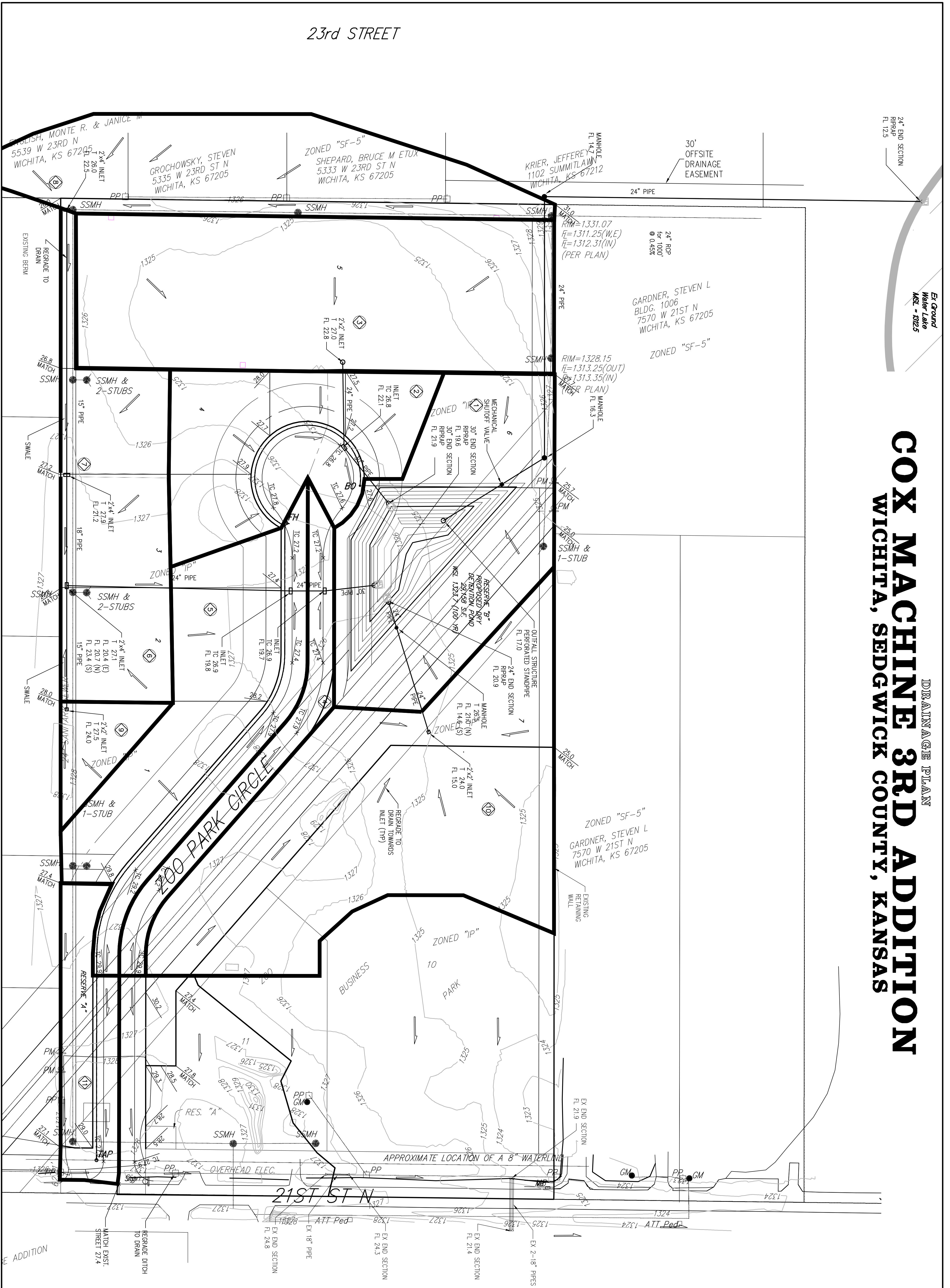


23rd STREET



**DRAINAGE PLAN**  
**COX MACHINE 3RD ADDITION**  
**WICHITA, SEDGWICK COUNTY, KANSAS**

24" END SECTION  
 RIRAP  
 FL 125

30' OFFSITE  
 DRAINAGE  
 EASEMENT

24" PIPE

24" RCP  
 for 1000'  
 @ 0.45%

GARDNER, STEVEN L  
 BLDG. 1006  
 7570 W 21ST N  
 WICHITA, KS 67205

ZONED "SF-5"

Et. Ground  
 Water Table  
 MSL - 1025

MANHOLE  
 FL 147  
 1102 SUMMITLAWN  
 WICHITA, KS 67212

RIM=1331.07  
 FI=1311.25(W,E)  
 FI=1312.31(N)  
 (PER PLAN)

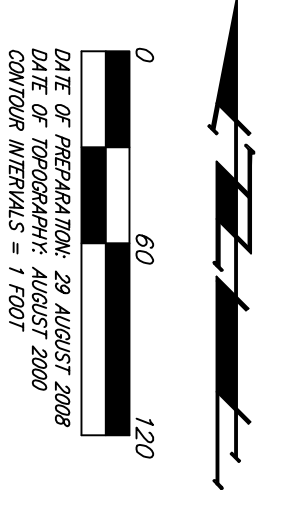
RIM=1328.15  
 FI=1313.25(OUT)  
 FI=1313.35(IN)  
 (PER PLAN)

MANHOLE  
 FL 16.3

ZONED "SF-5"

GARDNER, STEVEN L  
 7570 W 21ST N  
 WICHITA, KS 67205

EX END SECTION  
 FL 219



OWNER:  
 COXCO, LLC  
 5338 W 21ST STREET N  
 WICHITA, KS 67207

ENGINEER:  
 BAUGHMAN  
 315 E 18TH ST, WICHITA, KS 67211 F 316-262-1271 F 316-262-0149  
 ENGINEERING | SURVEYING | PLANNING | LANDSCAPE ARCHITECTURE

DATE OF PREPARATION: 29 AUGUST 2008  
 DATE OF REVISION: AUGUST 2008  
 CONTRACT NUMBER: 1-1501

BENCHMARK:  
 City Disc - 48.5' W & 28' N, of C of 21st  
 Street North & Hoover St. Elev = 1318.57  
 NGVD29 (130.97 City Datum)

Run	Area	Slope	Flow Rates (cfs)		
			2yr	10yr	100yr
1	0.6	0.74	4.56	5.22	7.37
2	0.6	0.74	4.56	5.22	7.37
3	0.6	0.74	4.56	5.22	7.37
4	0.6	0.74	4.56	5.22	7.37
5	0.6	0.74	4.56	5.22	7.37
6	0.6	0.74	4.56	5.22	7.37
7	0.6	0.74	4.56	5.22	7.37
8	0.6	0.74	4.56	5.22	7.37
9	0.6	0.74	4.56	5.22	7.37
10	0.6	0.74	4.56	5.22	7.37
11	0.6	0.74	4.56	5.22	7.37
TOTAL	6.8	44	54	65	98

Proposed Storm Water Sewer  
 Proposed Drop Inlet

**BAUGHMAN**  
 Baughman Company, P.A.  
 315 E 18TH ST, WICHITA, KS 67211 F 316-262-1271 F 316-262-0149  
 ENGINEERING | SURVEYING | PLANNING | LANDSCAPE ARCHITECTURE

VICINITY MAP  
 3 September 2008