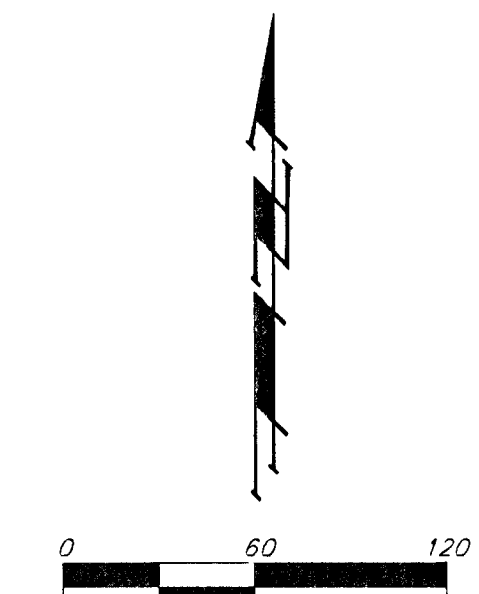
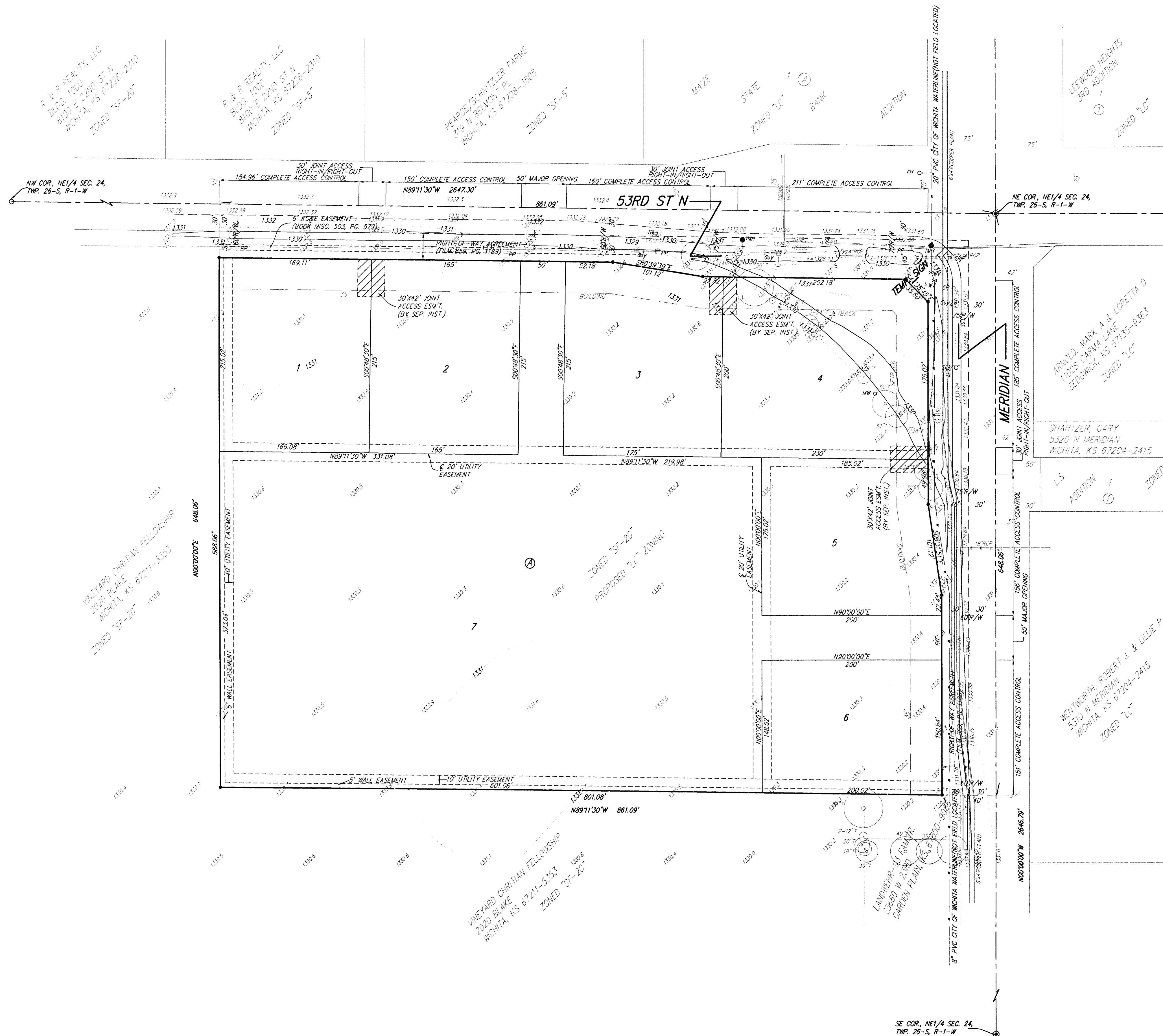


PRELIMINARY PLAT
JOHNSON COMMERCIAL CENTRE
 AN ADDITION TO WICHITA, SEDGWICK COUNTY, KANSAS



DATE OF PREPARATION: 24 APRIL 2006
 DATE OF TYPING: 8 FEBRUARY 2006
 CONTOUR INTERVALS = 1 FOOT

OWNER:
 CHARLES W. JOHNSON LIVING TRUST
 2823 KEYWEST CT
 WICHITA, KS 67204-2317

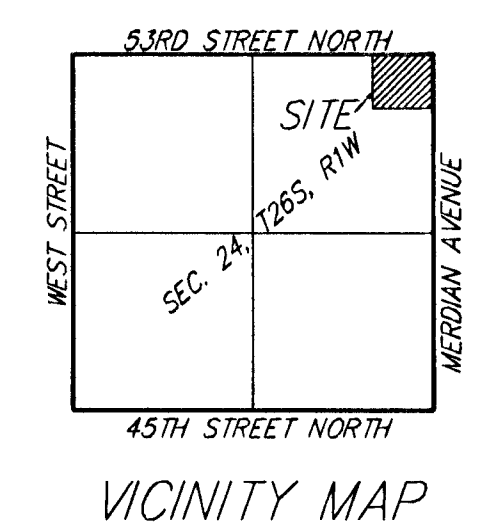
LEGAL DESCRIPTION:
 THE NORTH 548.00 FEET OF THE EAST 881.00 FEET OF THE NE 1/4 OF SECTION 24, TWP. 26-S, R-1-W OF THE 6TH P.M., SEDGWICK COUNTY, KANSAS, SUBJECT TO ROAD RIGHTS-OF-WAY OF RECORD.

BENCHMARK:
 COW BENCHMARK AT THE INTERSECTION OF MERIDIAN AND 53RD ST N, NE CORNER TOP OF CONCRETE HEADWALL 44' NORTH OF CENTERLINE 37' EAST OF CENTERLINE 50.90' NE OF SECTION CORNER 9' NE OF AND RADIAL TO CURB 28' EAST OF SECTION LINE ELEV. = 1331.37 NGVD29

NOTE:
 ADDITIONAL BUILDING SETBACKS PER COMMUNITY UNIT PLAN DP-283

NOTE:
 SANITARY SEWER MAIN IS IN THE PROCESS OF BEING EXTENDED.

- = #4 REBAR W/ "BAUGHMAN" CAP (SET)
- ⊙ = #5 REBAR (FOUND)
- = 1/2" IRON (FOUND)
- (M) = MEASURED
- (D) = DESCRIBED
- (P) = PLATTED
- (C) = CALCULATED



- FN ○ = Fire Hydrant
- OP ○ = Guy Pole
- Guy ○ = Guy Anchor
- MW ○ = Monitoring Well
- pp □ = Power Pole
- Spn □ = Signal Pole
- Spn □ = Sign
- SWSM ● = Stormwater Sewer Manhole
- T ● = Tree
- TB ● = Traffic Bar
- TM ● = Traffic Manhole
- WM ● = Water Valve

24 APRIL 2006