

SKETCH PLAT JESSE 3RD ADDITION

WICHITA, SEDGWICK COUNTY, KANSAS

LEGAL DESCRIPTION:

Lot 15, except the west 150 feet thereof, Timmermeyer Gardens, Sedgwick County, Kansas.

OWNER:

Richard P. Jesse
Enid L. Jesse
3201 N. Woodland
Wichita, Kansas 67204

Ph. (316) 838-4565

GROSS SIZE:

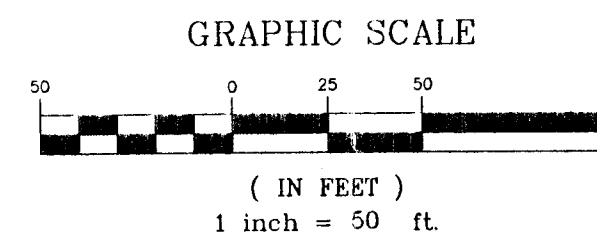
28,458.47 Sq. Ft.±
0.653 Acres±

NET SIZE:

23,837.40 Sq. Ft.±
0.547 Acres±

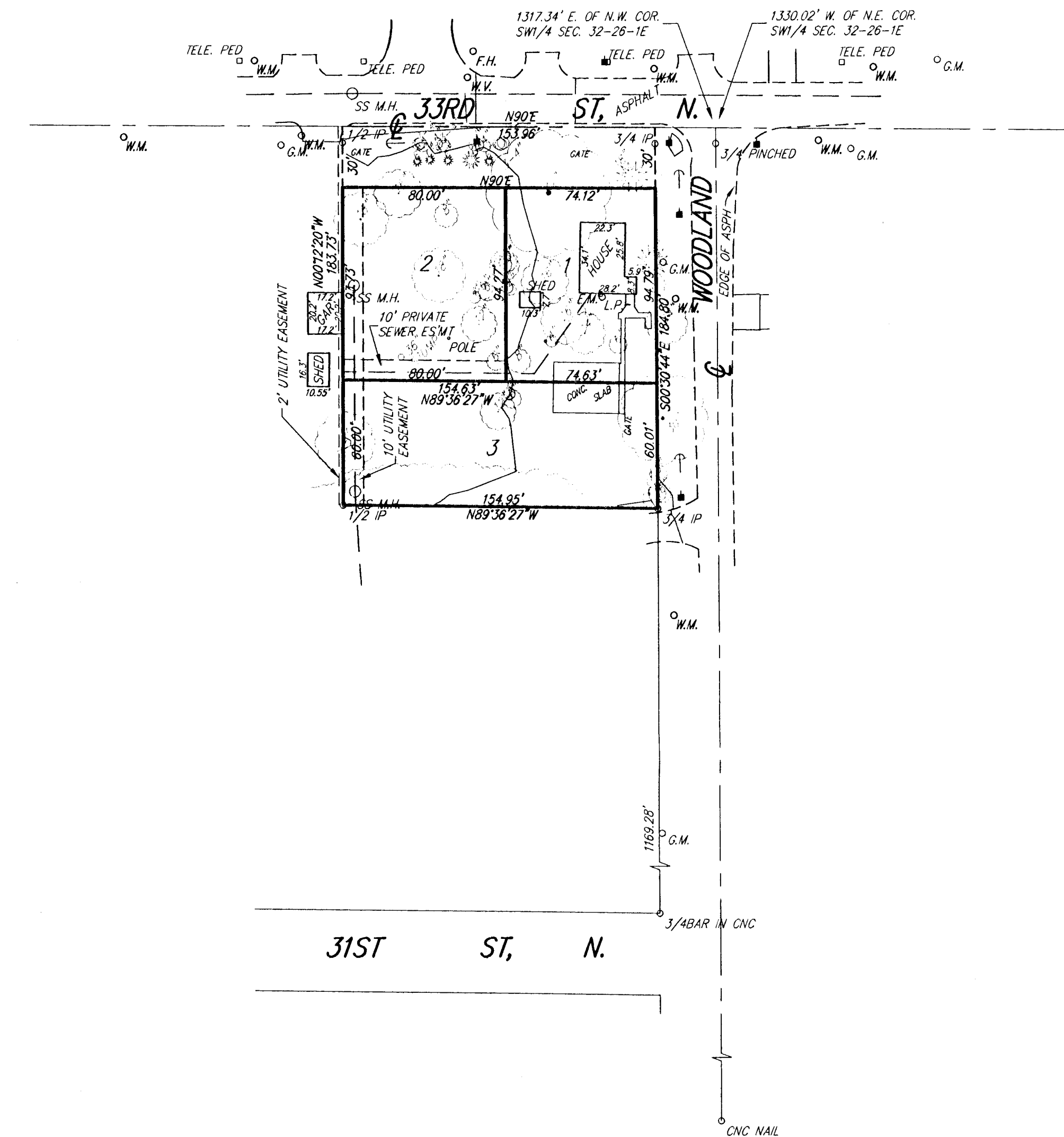
MINIMUM LOT SIZE:

7,029.96 Sq. Ft.±
0.161 Acres±

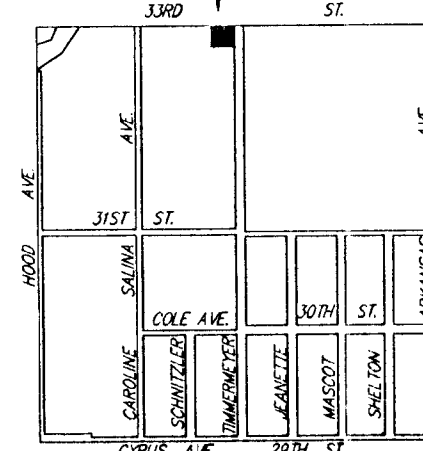


BENCHMARK: CITY OF WICHITA STD. DISC
11'S. & 17.5'W OF INTERSECTION OF CENTERLINES
33RD ST. N. & SILINA ST.
ELEV.=130.43 (CITY DATUM)

ON SITE B.M.: R.R. SPIKE IN POWER POLE
S.W. CORNER OF INTERSECTION OF
33RD ST. N. & WOODLAND
ELEV.=133.68 (CITY DATUM)



JESSE 3RD ADDITION



SW 1/4 SEC. 32-26-1E
MOHNTY MAP