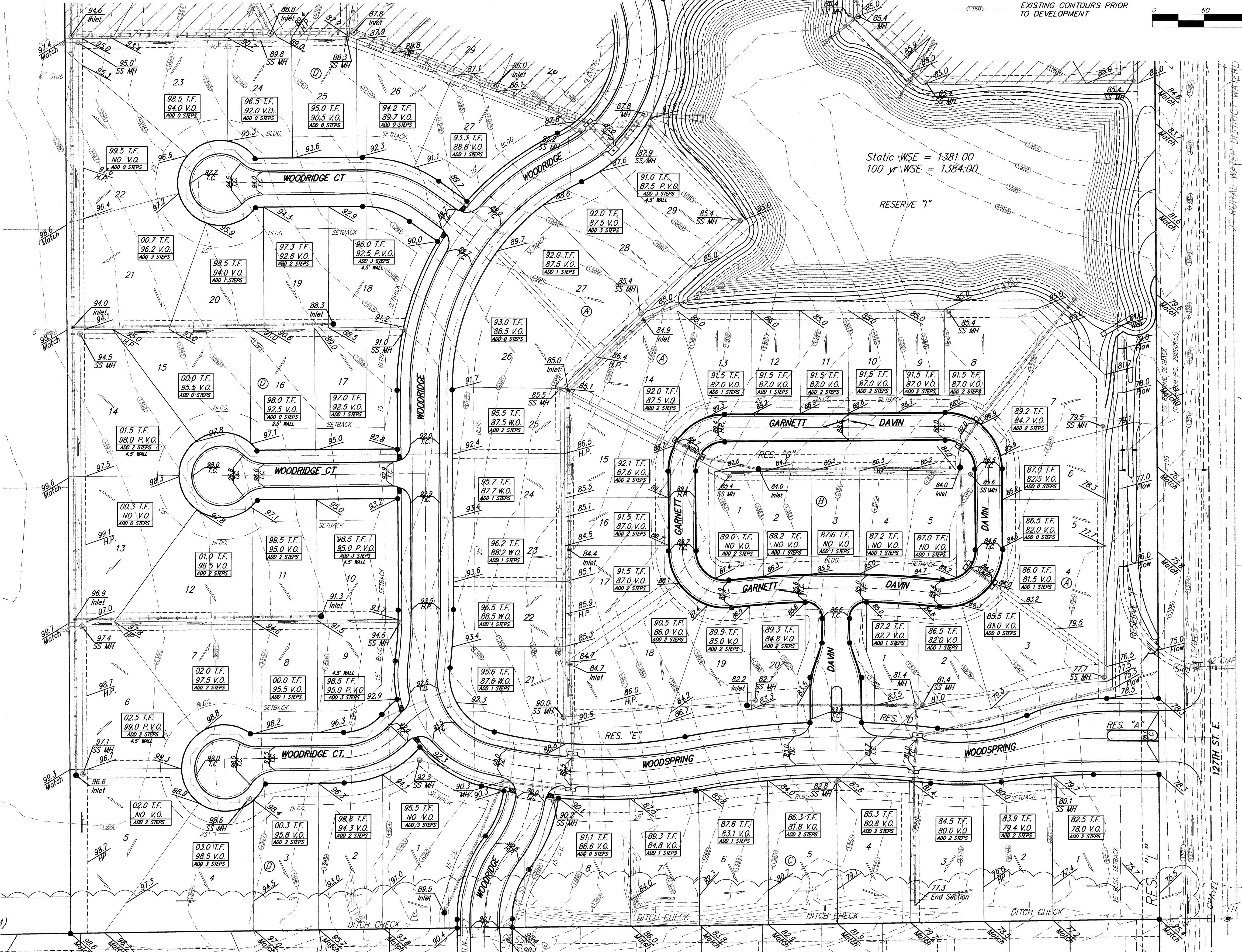


BENCHMARK:
 CROSS CUT ON NORTH END OF WEST HEADWALL 137.5' SOUTH & 12' WEST OF THE INTERSECTION OF 29TH ST N & 127TH ST E. ELEV. = 1382.45 NAVD88

Q OF WEST EDGE OF CONCRETE DRIVE 31.4' NE OF THE EAST CORNER OF SEC. 3, TWP 27-S, R-2-E. ELEV. = 1373.82 NAVD88

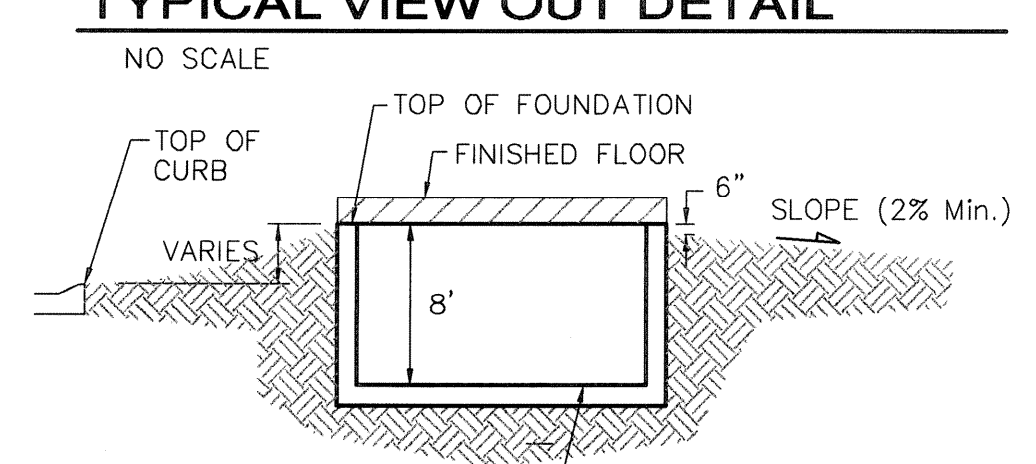
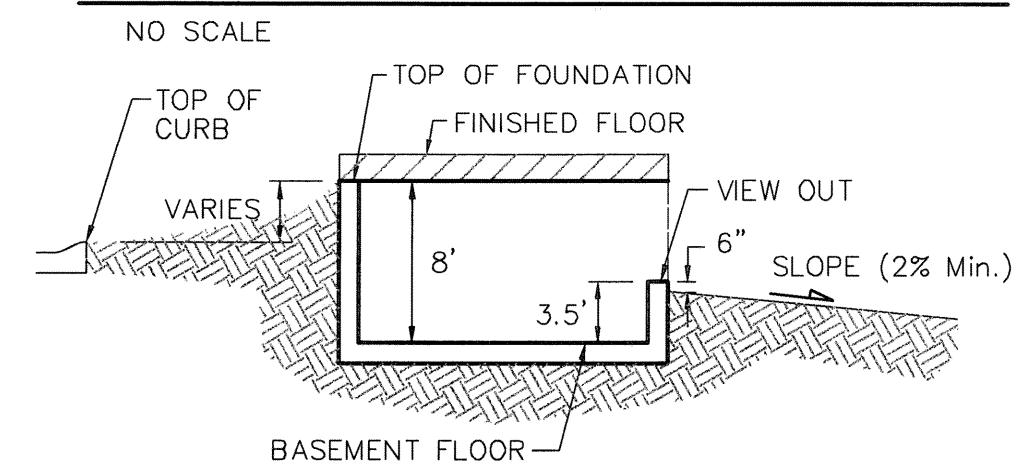
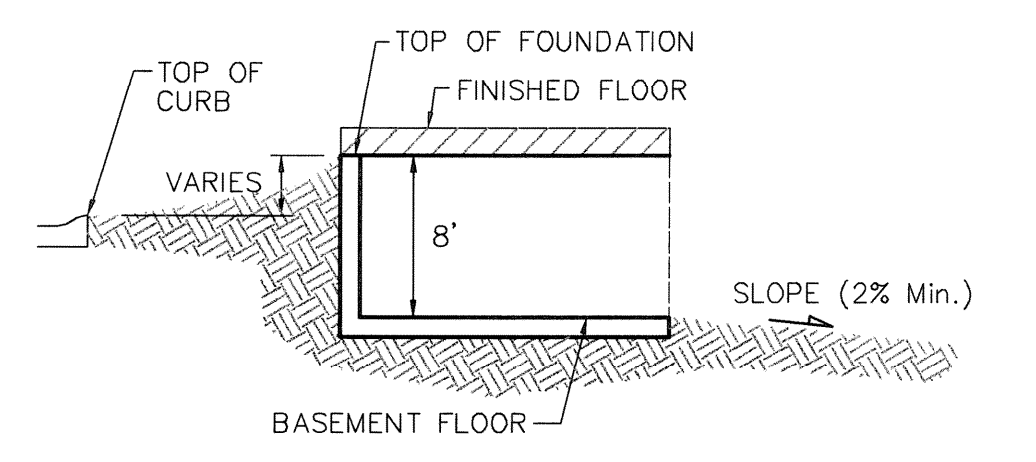


NOTES:

1. PROPOSED TOP OF FOUNDATION ELEVATIONS ARE SHOWN ON PLANS. CONTRACTOR TO SET FINISHED FLOOR AND GARAGE FLOOR ELEVATIONS. ALL STREET ELEVATIONS SHOWN ON PLANS ARE FOR TOP OF CURB (FULL-HEIGHT).
2. THIS GRADING PLAN IS DESIGNED WITH VIEW-OUTS AND WALK-OUTS. ELEVATIONS SHOWN AS XXX V.O. DEPICT VIEW-OUT STRUCTURES. ELEVATIONS SHOWN AS XX.X V.O. DEPICT WALK-OUT STRUCTURES.
3. ALL LOTS SHALL MEET MINIMUM PAD REQUIREMENT AS SHOWN ON THE RECORDED PLAT.

MINIMUM BUILDING PAD ELEVATIONS FOR LOWEST OPENING TO THE STRUCTURES			
LOT	BLOCK	ELEVATION	
		CITY DATUM	NGVD29
3-7	A	192.6	1380.0
8-14	A	197.6	1386.0
28-30	A	197.6	1386.0
39-41	A	197.6	1386.0
54-57	D	200.6	1388.0
63-68	D	200.6	1388.0
70-83	D	200.6	1388.0

4. LOT DIMENSIONS HAVE BEEN OMITTED ON THIS PLAN. REFER TO THE RECORDED PLAT FOR FINAL DIMENSION, EASEMENT, & BUILDING SETBACK INFORMATION.
5. HOUSE PAD ELEVATIONS DEPICTED WITH BOLD OUTLINES AND NOTED WITH THIS SYMBOL ● INDICATE THAT DEEP FOOTINGS OR DEEP FOUNDATIONS MAY BE REQUIRED.
6. A DRAINAGE PLAN HAS BEEN DEVELOPED FOR THIS SUBDIVISION AND IS ON FILE WITH THE CITY OF WICHITA, KANSAS. DRAINAGE INTENT SHALL REMAIN AS DEPICTED OR AS MODIFIED WITH THE APPROVAL OF THE CITY ENGINEER OF THE CITY OF WICHITA, KANSAS. NO OBSTRUCTIONS WHICH IMPEDE THE FLOW OF THIS DRAINAGE PLAN SHALL BE ALLOWED.
7. ALL ELEVATIONS SHOWN ARE IN CITY OF WICHITA DATUM
8. ADDITIONAL STEPS SHOWN ARE IN ADDITION TO STANDARD 3 STEPS (7" TALL) FROM GARAGE FLOOR TO FINISHED FLOOR. LOTS 1-20, BLOCK A AND LOTS 1-5, BLOCK B SHALL HAVE A 30' BUILDING SETBACK.



Baughman Woods North
Grading Plan
 Wichita, Sedgewick County, Kansas

REVISIONS:
 11/18/08 AEG
 LOTS 1 & 6, BLOCK C T.F., V.O. & REAR YARDS
 2/24/09 AEG
 LOTS 14, 15 & 19-20, A T.F., V.O. & REAR YARDS
 7/6/09 AEG
 LOT 20, BLOCK C RAISED 6" PER BUILDER

APPROVED DATE: 8/14/08
 SCALE: 1" = 60'
 SHEET: 1 OF 3

PROJECT NUMBER: DESIGN DRAWN

Professional Engineer Seal: JUSTINE E. GOTTINGER, License No. 17019, State of Kansas.

E:\Woods North\Grading Plan Revised.dwg