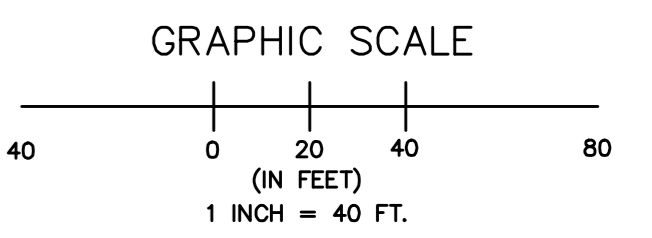
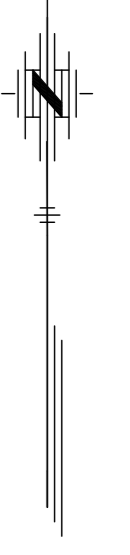
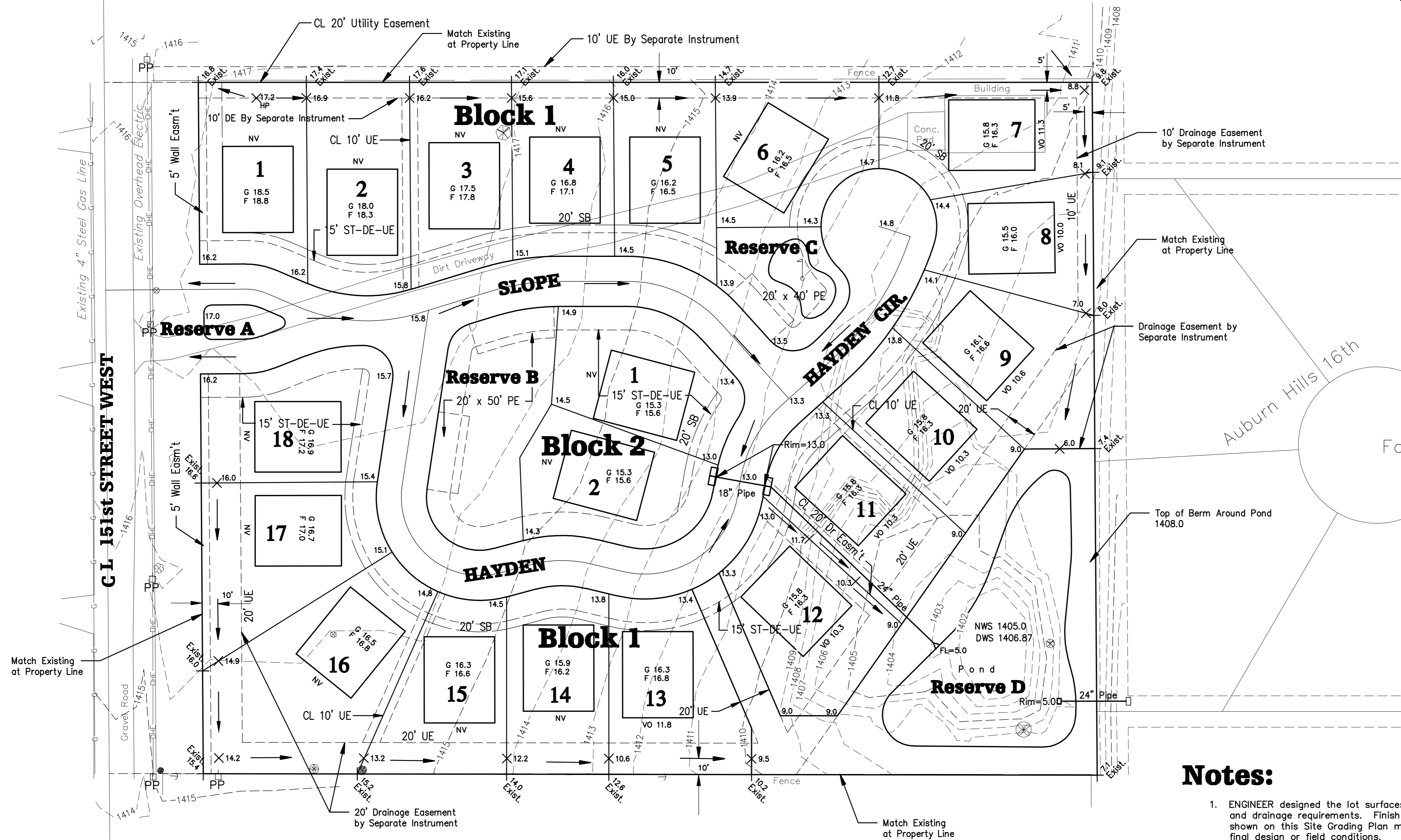


Lot Grading Plan High Point West Addition

Date: January 6, 2009
 Revised: June 25, 2009
 June 30, 2009
 July 9, 2009



Benchmark:

Square cut on west hubguard of RCBC
 350' North of Sec. Corner
 Elev. 1392.65' MSL Datum

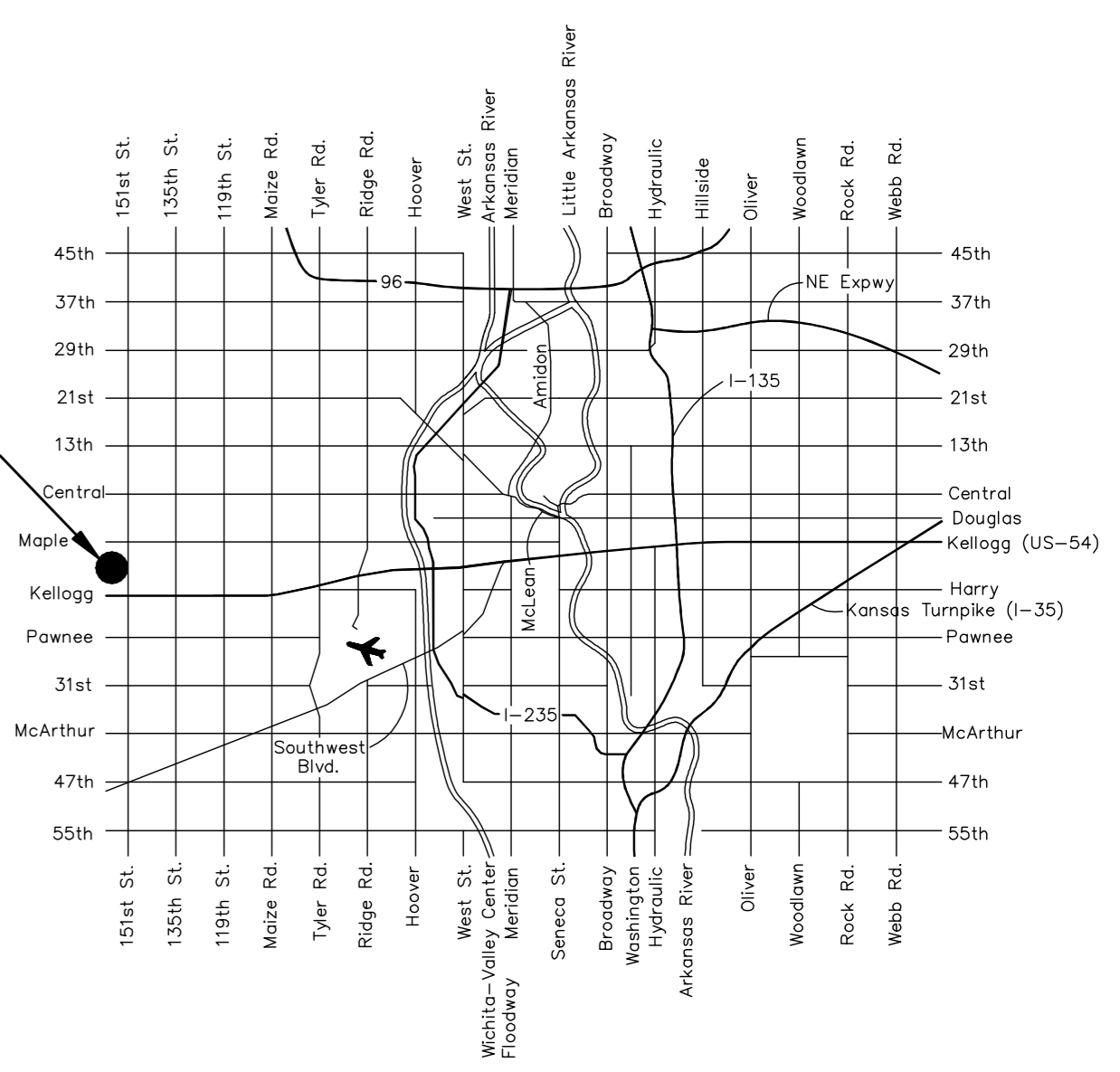
Legend:

Garage Floor	G 15.6
Top of Foundation	F 17.1
Ground Elevation at View Out Window	VO 12.1
No View Out Basement	NV
Elevation at Property Line	17.1
Elevation at Swale	X 17.1
Elevation at High Point	HP 17.2

Notes:

- ENGINEER designed the lot surfaces for site grading and drainage requirements. Finish spot elevations shown on this Site Grading Plan may change to meet final design or field conditions.
- BUILDER should confirm with DEVELOPER that BUILDER has the most current Lot Grading Plan.
- DEVELOPER and ENGINEER do not represent that the fill material, compaction of fills, or in place soils, are suitable for a building foundation. BUILDER shall make his own determination of foundation and footing design appropriate for his building. Building footings and slabs near original ground lines, those in partial fills, and other non-typical fills may need special footing designs. Generally, lot fills were not tested for compaction.
- Where drainage crosses the rear of a lot, BUILDER shall maintain a straight-line grade between the two rear lot corners consistent with adjacent lot grades and elevations.
- Minimum Low opening elevation for Lots 9 through 13, Block 1 is 1410.0 MSL Datum.
- Top of Roll Curb Grade is 0.06' below R/W Elevation.

SITE



LOCATION MAP