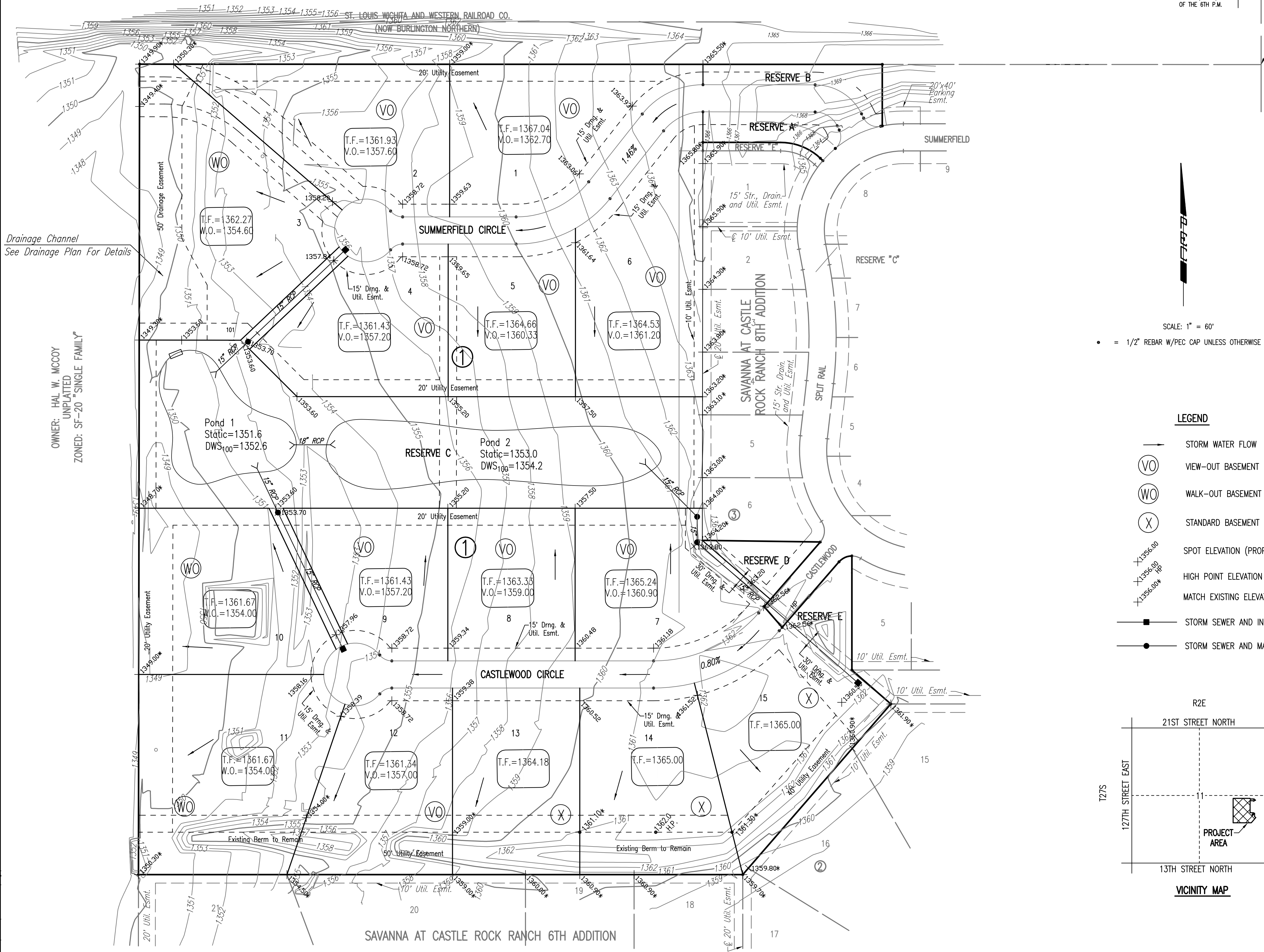


SAVANNA AT CASTLE ROCK RANCH 10TH ADDITION

TO SEDGWICK COUNTY, KANSAS

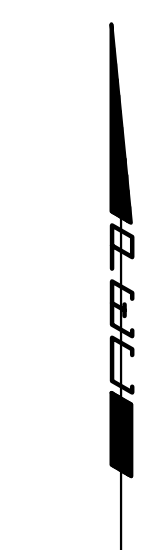
FOUR-CORNER PLAN



Drainage Channel
See Drainage Plan For Details

OWNER: HAL W. MCCOY
UNPLATTED
ZONED: SF-20 "SINGLE FAMILY"

N.E. CORNER, S.E. 1/4
SEC. 11, T27S, R2E
OF THE 6TH P.M.



SCALE: 1" = 60'

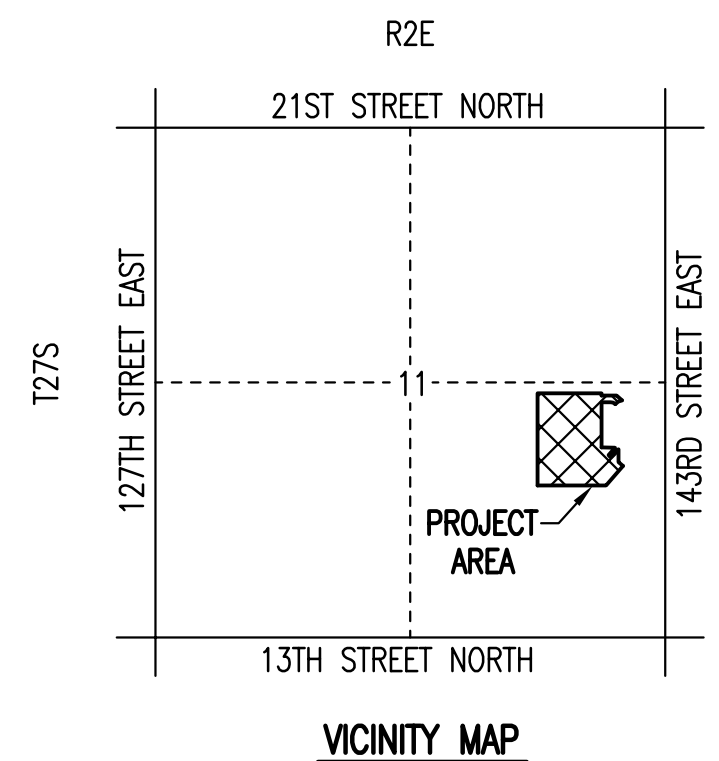
• = 1/2" REBAR W/PEC CAP UNLESS OTHERWISE NOTED

LEGEND

- STORM WATER FLOW
- (VO) VIEW-OUT BASEMENT
- (WO) WALK-OUT BASEMENT
- (X) STANDARD BASEMENT
- +1356.00 SPOT ELEVATION (PROPOSED)
- +1356.00 HP HIGH POINT ELEVATION (PROPOSED)
- +1356.00* MATCH EXISTING ELEVATION
- STORM SEWER AND INLET
- STORM SEWER AND MANHOLE

BENCHMARKS:
 BM#60: (DATUM BENCHMARK) CHISELED "+" ON TOP OF STEEL CORNER POST TO HORSE CORRAL 17' NORTH AND 13' WEST OF NW CORNER OF LOT 1, BLOCK 2, SAVANNA @ CASTLE ROCK RANCH 6TH ADDITION @ WEST END OF CASTLEWOOD STREET.
 ELEV. = 1353.36 N.G.V.D.
 BM#4: 60D STEP NAILS IN WEST FACE 36" COTTONWOOD, 300'± SOUTH OF RAILROAD TRACKS; 50' EAST OF WEST PROPERTY LINE OF SAVANNA PROPERTY.
 ELEV. = 1351.64 N.G.V.D.
 BM#6: CHISELED "X" ON NORTH RIM SS MANHOLE NEAR SW CORNER LOT 1, BLOCK 3, SAVANNA @ CASTLE ROCK RANCH, 8TH ADDITION.
 ELEV. = 1366.24 N.G.V.D.
 BM#7: CHISELED "X" ON NORTH RIM SS MANHOLE NEAR SW CORNER LOT 6, BLOCK 3, SAVANNA @ CASTLE ROCK RANCH 8TH ADDITION.
 ELEV. = 1365.61 N.G.V.D.

MINIMUM OPENINGS	ELEVATION (N.G.V.D.)
BLOCK 1	
LOT 3	1354.6
LOT 10	1354.0
LOTS 4 through 9	1357.2



REVISED 11-19-04
 REVISED 04-08-04
 REVISED 07-13-09

Sheet 11 of 12 - 7/01/04 4:45:30 PM By: SAW
 Plot Scale: 1" = 60' 07-15-2009 4:35:37 PM
 C:\2003\03342\LD\03342.dwg\ACORNER REV. 11-19-04