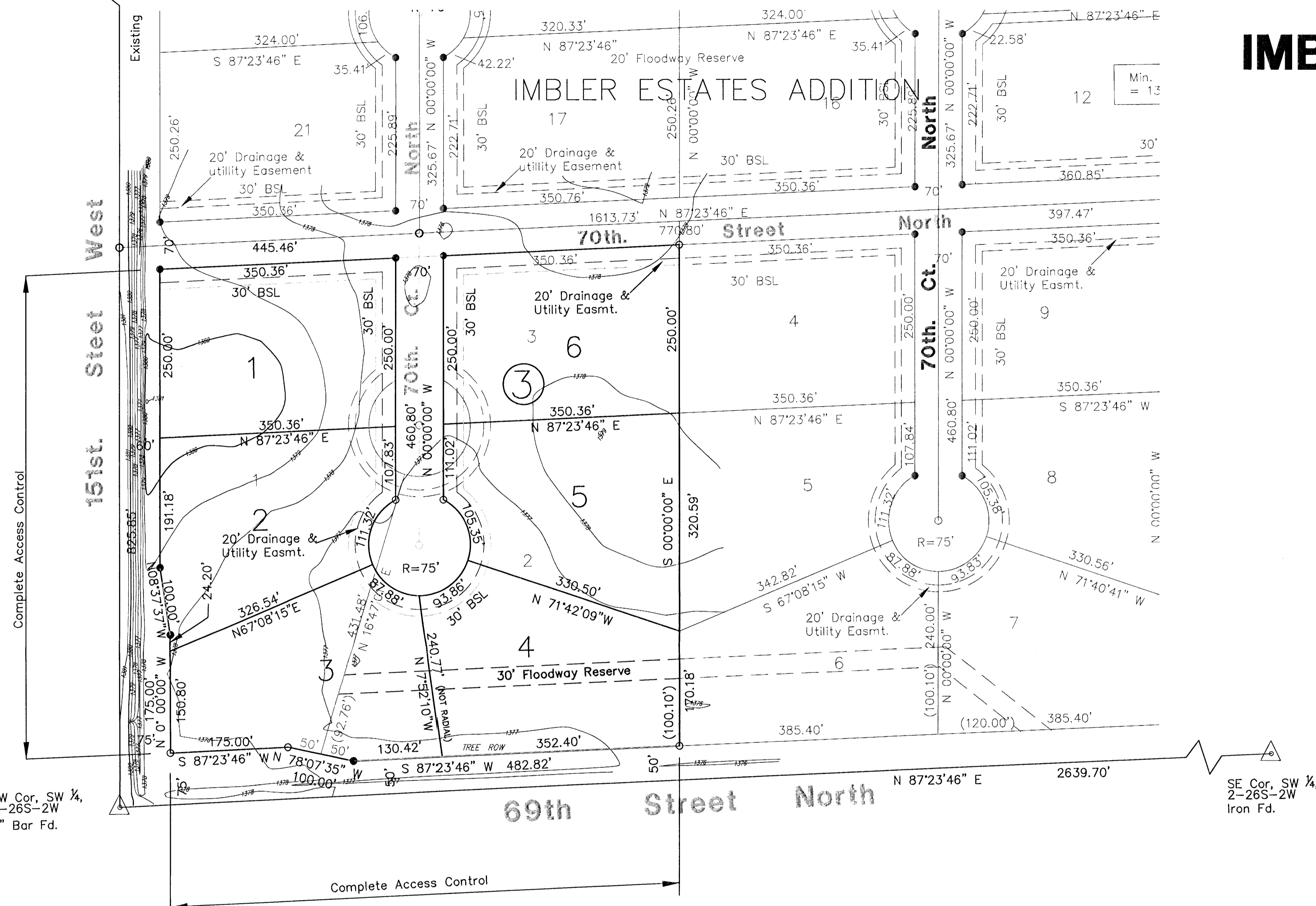
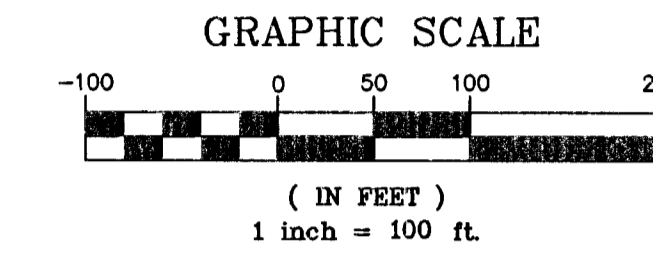
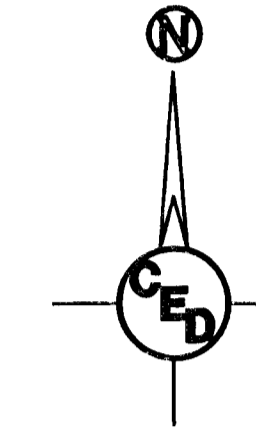


NW Cor, SW 1/4,
2-26S-2W
1" pipe fd.



PRELIMINARY PLAT
IMBLER ESTATES 2ND ADDITION
 SOUTH 1/2, SEC. 2, T.26S., R.2W.
 SEDGWICK COUNTY, KANSAS



LEGAL DESCRIPTION:

Lots 1, 2, and 3, Block 3, and all of 70th Ct. North lying south of the north line of said Lot 1, extended east to the west line of said Lot 3, Imbler Estates, and Addition to Sedgwick County, Kansas.

BENCHMARK:

BM# 1
 Square Cut S.E. Corner East Headwall 4@ 6'x4' RCBC 2670 Feet North of SW Cor, SW 1/4
 Elevation = 1374.47
 BM# 3
 Top of Rabar w/Anderson Cap NE Corner Lot 11, Block 2, Imbler Estates
 Elevation = 1369.16

ZONING:

RR-Rural Residential

AREA OF PLAT:

12.87 Acres

DATE PREPARED:

MAY 20, 2008

DATE SURVEYED:

April 24, 2008

SURVEYOR:

Mark Savoy RLS#788
 Savoy Company, P.A.
 433 S. Hydraulic
 Wichita, KS 67211
 (316) 265-0005

ENGINEER:

Harlan Foraker, P.E.
 Certified Engineering Design, P.A.
 810 W. Douglas, Suite C
 Wichita, KS 67203
 (316) 262-8808

OWNER AND SUBDIVIDER:

Kenneth W. and Susan J. Havener
 7406 Norfolk
 Wichita, KS 67206
 (316) 265-6712 Ext. 202

Lot 1	2.00 AC
Lot 2	1.96 AC
Lot 3	1.97 AC
Lot 4	1.97 AC
Lot 5	1.99 AC
Lot 6	2.00 AC

Replat of 1, 2, & 3, Block 3, Imbler Estates Addition		
IMBLER ESTATES 2ND ADD.		
SEC 2, T26S, R2W, Sedgwick County, Kansas		
PROJ. NO.: 20081668		
CERTIFIED ENGINEERING DESIGN, P.A.		
810 WEST DOUGLAS, SUITE C		
WICHITA, KANSAS 67203		
PH.(316)262-8808 FAX.(316)262-1669		
DESIGNED: HDF	SCALE: 1"=100'	SHEET 1
DRAWN: PED	DATE: May 21, 2008	TOTAL 1
CHECKED: HDF	CED FILE: CED-PED2.20.07	TOTAL 1