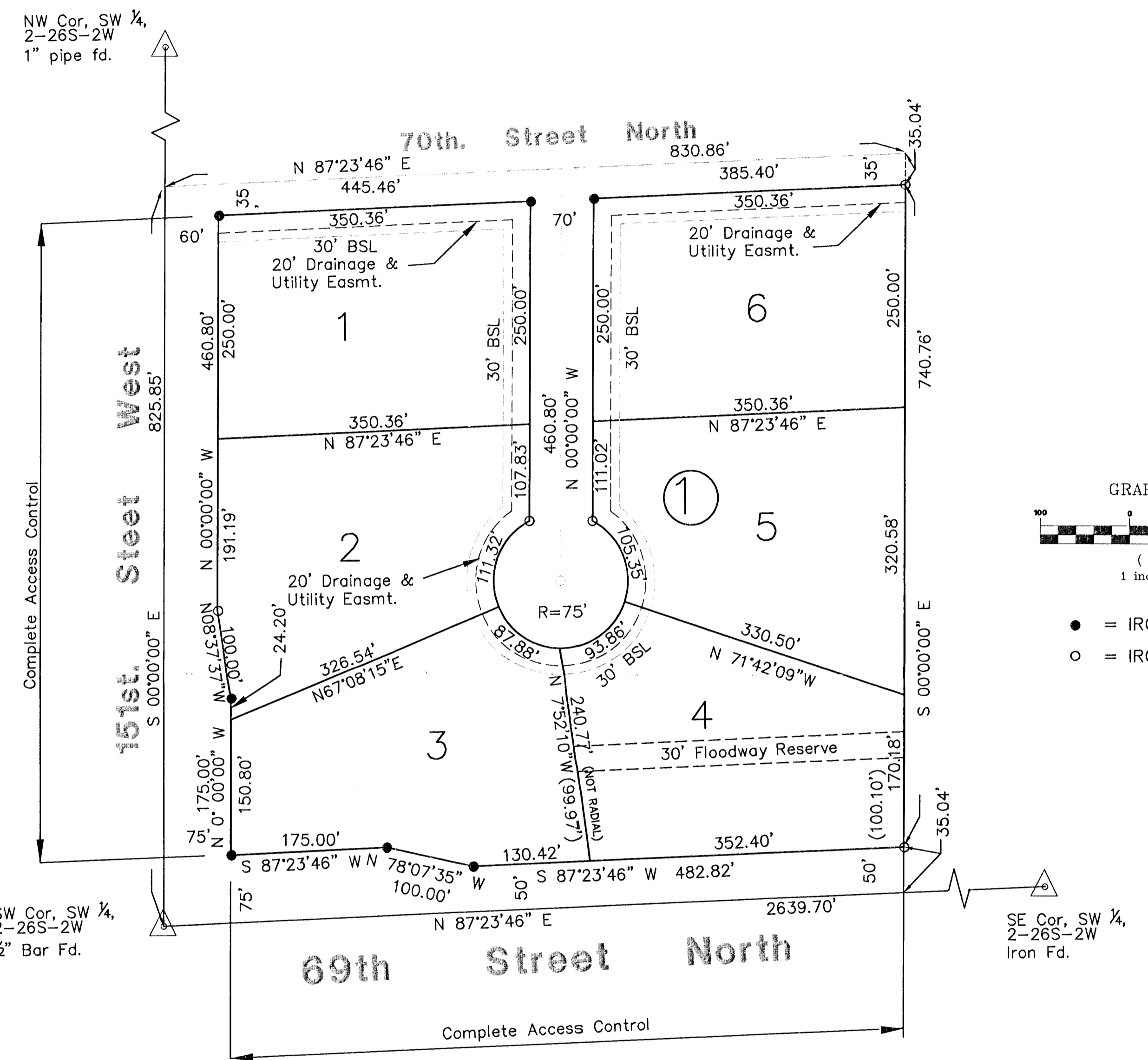


IMBLER ESTATES 2ND ADDITION

TO SEDGWICK COUNTY, KANSAS



BENCH MARK: SQUARE CUT SE CORNER EAST HEASWALL 4@6"x4" RCBC 2670 FEET
NORTH OF SW CORNER OF SW 1/4, SEC 2-28-2W ELEVATION = 1374.47

BENCH MARK: TOP OF REBAR W/ANDERSON CAP NE CORNER LOT 11, BLOCK 2
IMBLER ESTATES ADDITION ELEVATION = 1369.16

State of Kansas) SS
Sedgwick County)

We, Savoy Company, P.A., Surveyors in aforesaid county and state do hereby certify that, under the supervision of the undersigned, we have surveyed and platted "IMBLER ESTATES 2ND ADDITION", to Sedgwick County, Kansas and that the accompanying plat is a true and correct exhibit of the property surveyed, described as and being a replat of the following described property.

Lots 1, 2 and 3, Block 3, and all of 70th Ct. North, lying south of the north line of said Lot 1, extended east to the west line of said Lot 3, Imbler Estates, an Addition to Sedgwick County, Kansas.

All Public easements and dedications being vacated by virtue of K.S.A. 12-512(b).

Savoy Company, P.A.
Date: _____
Mark A. Savoy RLS #788 Surveyor

Know all men by these presents that We, the undersigned, have caused the land described in the surveyors certificate to be platted into Lots, a Block and Streets to be known as "IMBLER ESTATES 2ND ADDITION", to Sedgwick County, Kansas. The street is hereby dedicated to and for the use of the public. The drainage & Utility Easements are hereby granted as indicated for drainage purposes and for the construction and maintenance of all public utilities. Access controls are hereby granted to the appropriate governing body as indicated on the face of the plat. A drainage plan has been developed for this plat and all drainage easements and rights-of-way shall remain at established grades or modified with the approval of the Engineer of the appropriate governing body, and unobstructed to allow for the conveyance of stormwater.

Kenneth W. Havener Susan J. Havener

State of Kansas) SS
Sedgwick County)

The foregoing instrument acknowledged before me, this _____ day of _____, 2008, by Kenneth W. Havener and Susan J. Havener, husband and wife.

My App't. Exp _____ Notary Public

We, the undersigned, holders of a mortgage on the above described property, do hereby consent to this plat of "IMBLER ESTATES 2ND ADDITION", to Sedgwick County, Kansas.

State of Kansas) SS
Sedgwick County)

The foregoing instrument acknowledged before me, this _____ day of _____, 2008, by _____ of Central National Bank, on behalf of the Bank.

My App't. Exp _____ Notary Public

Reviewed in accordance with K.S.A. 58-2005 on this _____ day of _____, 2008.

Deputy County Surveyor
Sedgwick County, Kansas
Tricia L. Robello, L.S. #1246

This plat of "IMBLER ESTATES 2ND ADDITION", to Sedgwick County, Kansas, has been submitted to and approved by the Wichita-Sedgwick County Metropolitan Area Planning Commission, Wichita, Kansas. Dated this _____ day of _____, 2008.

Wichita-Sedgwick County Metropolitan Area Planning Commission

Chairman
M.S. Mitchell
Secretary
John L. Schlegel

This plat approved and all dedications shown hereon, are hereby accepted by the Board of County Commissioners, Sedgwick County, Kansas, this day _____ of _____, 2008.

Chairman
Tom Winters
County Clerk
Don Brace

Entered on transfer record this _____ day of _____, 2008.

County Clerk
Don Brace

State of Kansas) SS
Sedgwick County)

This is to certify that this plat has been filed for record in the office of the Register of Deeds, this _____ day of _____, 2008, at _____ o'clock _____ M. and is duly recorded.

Register of Deeds
Bill Meek
Deputy
Tonya Buckingham