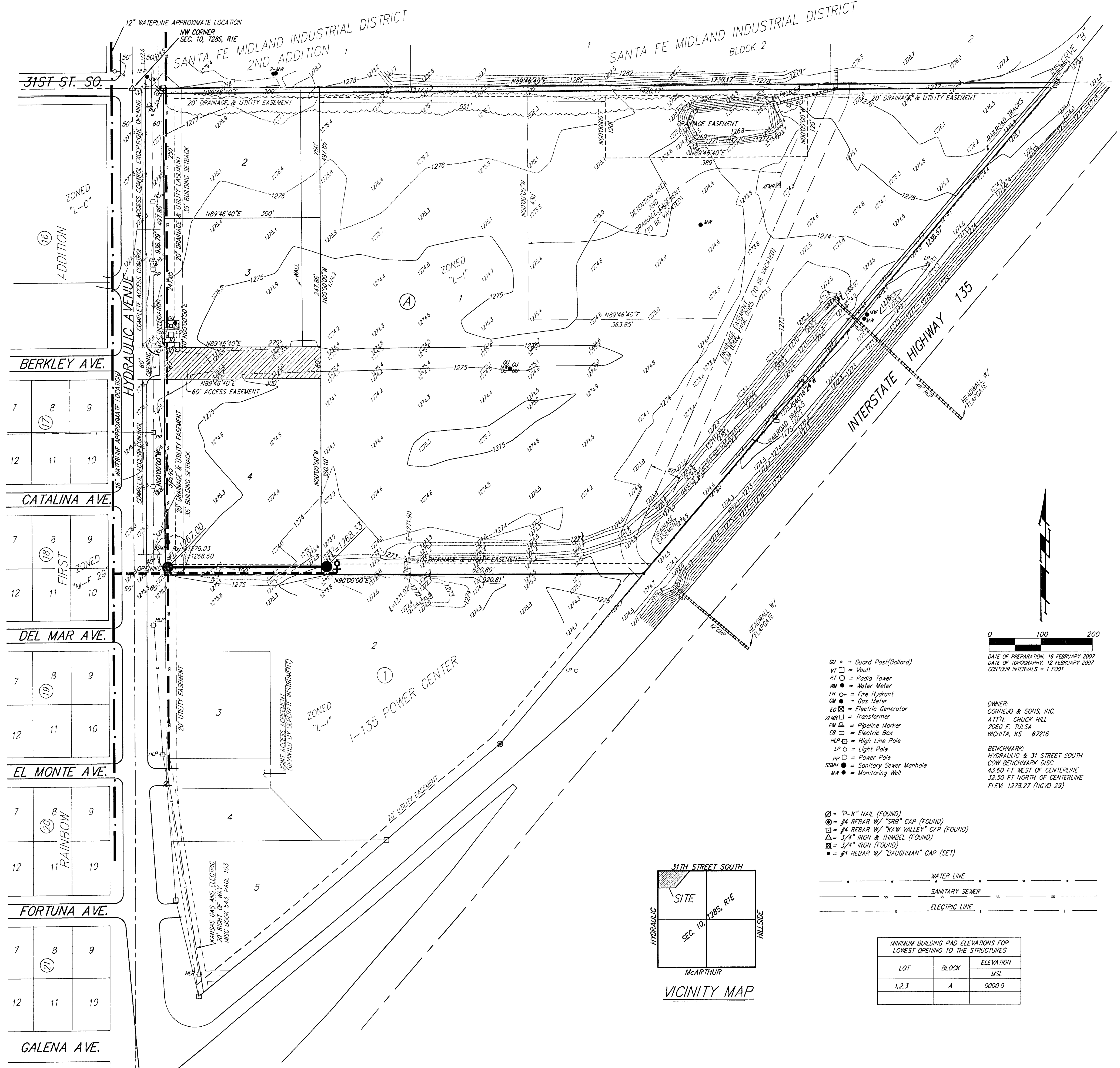


# UTILITY PLAN

## I-135 POWER CENTER 2ND ADDITION

### WICHITA, SEDGWICK COUNTY, KANSAS



**LEGEND**

	Proposed Water Line (8" Unless Noted Otherwise)
	Existing Water Line (8" Unless Noted Otherwise)
	Proposed Sanitary Sewer Line (8" Unless Noted Otherwise)
	Existing Sanitary Sewer Line (8" Unless Noted Otherwise)
	Proposed Sanitary Sewer Manhole
	Proposed Fire Hydrant
	Proposed Sanitary Sewer Flow

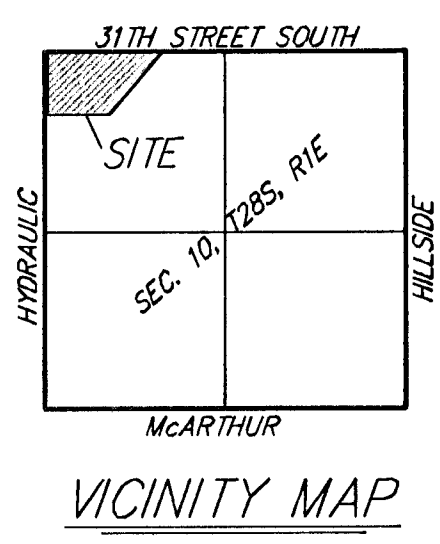
- GP = Guard Post (Balard)
- VT = Vault
- RT = Radio Tower
- WM = Water Meter
- FH = Fire Hydrant
- GM = Gas Meter
- EGS = Electric Generator
- TR = Transformer
- PM = Pipeline Marker
- EB = Electric Box
- HPLS = High Line Pole
- LP = Light Pole
- PP = Power Pole
- SSW = Sanitary Sewer Manhole
- WW = Monitoring Well

DATE OF PREPARATION: 18 FEBRUARY 2007  
 DATE OF TOPOGRAPHY: 12 FEBRUARY 2007  
 CONTOUR INTERVALS = 1 FOOT

OWNER:  
 CORNEJO & SONS, INC.  
 417N. CHUCK HILL  
 2060 E. TULSA  
 WICHITA, KS 67216

BENCHMARK:  
 HYDRAULIC & 31 STREET SOUTH  
 COW BENCHMARK DISC.  
 43.50 FT WEST OF CENTERLINE  
 32.50 FT NORTH OF CENTERLINE  
 ELEV: 1278.27 (NGVD 29)

- OS = 7"-K" NAIL (FOUND)
- ⊙ = #4 REBAR W/ "SRB" CAP (FOUND)
- ⊠ = #4 REBAR W/ "XAW VALLEY" CAP (FOUND)
- △ = 3/4" IRON & THIMBEL (FOUND)
- ⊞ = 3/4" IRON (FOUND)
- = #4 REBAR W/ "BAUGHMAN" CAP (SET)



LOT	BLOCK	ELEVATION USL
1,2,3	A	0000.0

## I-135 POWER CENTER 2ND ADDITION

5 MARCH, 2007

**Baughman Company, P.A.**  
 315 Ella St., Wichita, KS 67211 P 316-262-7271 F 316-262-0149  
 ENGINEERING | SURVEYING | PLANNING | LANDSCAPE ARCHITECTURE