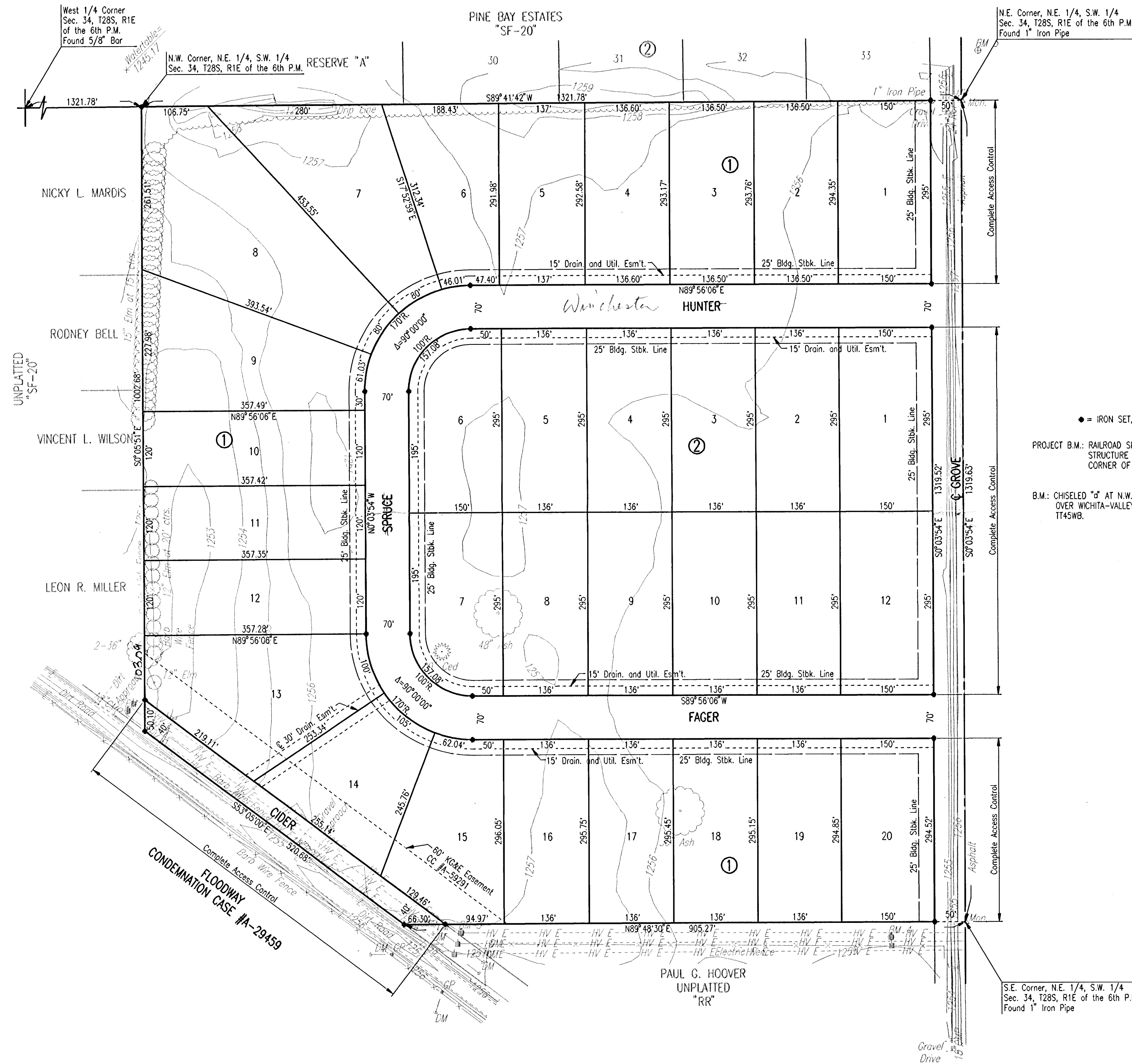


HUNTINGTON POINTE ADDITION TO SEDGWICK COUNTY, KANSAS



SCALE: 1"=100'
 ● = IRON SET, UNLESS NOTED OTHERWISE
 PROJECT B.M.: RAILROAD SPIKE ON WEST FACE OF NORTH POLE STRUCTURE OF HIGHLINE ELECTRIC NEAR S.E. CORNER OF PROPERTY. ELEV.=1257.20 M.S.L.
 B.M.: CHISELED "d" AT N.W. CORNER OF HUBGUARD ON BRIDGE OVER WICHITA-VALLEY CENTER FLOODWAY FROM U.S.G.S. T145WB. ELEV.=1268.58 M.S.L.

STATE OF KANSAS }
 COUNTY OF SEDGWICK } SS

WE, PROFESSIONAL ENGINEERING CONSULTANTS, P.A., ENGINEERS AND SURVEYORS IN AFORESAID STATE AND COUNTY, DO HEREBY CERTIFY ON THIS _____ DAY OF _____, 1999, THAT WE HAVE SURVEYED AND PLATTED HUNTINGTON POINTE ADDITION TO SEDGWICK COUNTY, KANSAS; INTO LOTS, BLOCKS, AND STREETS THE SAME BEING DESCRIBED AS:

THE NORTHEAST QUARTER OF THE SOUTHWEST QUARTER OF SECTION 34, TOWNSHIP 28 SOUTH, RANGE 1 EAST OF THE SIXTH PRINCIPAL MERIDIAN, SEDGWICK COUNTY, KANSAS, EXCEPT THAT PART CONDEMNED FOR FLOODWAY IN DISTRICT COURT CASE #A-294589.

ROADWAY EASEMENT AS PER ROAD RECORD BOOK A, PAGE 51, IS HEREBY VACATED AND REPLATTED BY K.S.A. 12-512 (b) AMENDED.

JAMES P. MOORE, R. L. S. NO. 829
 PROFESSIONAL ENGINEERING CONSULTANTS, P.A.

KNOW ALL MEN BY THESE PRESENTS THAT WE, THE UNDERSIGNED PROPERTY OWNERS OF THE LAND AS ABOVE SET FORTH IN THE SURVEYOR'S CERTIFICATE, HAVE CAUSED THE LAND TO BE SURVEYED AND PLATTED INTO LOTS, BLOCKS, AND STREETS THE SAME TO BE KNOWN AS HUNTINGTON POINTE ADDITION TO SEDGWICK COUNTY, KANSAS.

EASEMENTS FOR THE CONSTRUCTION AND MAINTENANCE OF PUBLIC UTILITIES AND DRAINAGE ARE HEREBY GRANTED.

ALL ADJUTERS' RIGHT OF ACCESS TO AND FROM GROVE AND CIDER STREETS OVER AND ACROSS THE EAST LINE OF LOTS 1 AND 20, BLOCK 1, LOTS 1 AND 12, BLOCK 2, AND THE SOUTHWESTERLY LINE OF LOTS 13, 14 AND 15, BLOCK 1, AS SHOWN ARE HEREBY GRANTED TO THE APPROPRIATE GOVERNING BODY.

OWNER: A TO Z RECYCLING, L.L.C.

BY: _____
 VINCENT L. WILSON, MANAGING PARTNER

STATE OF KANSAS }
 COUNTY OF SEDGWICK } SS

BE IT REMEMBERED ON THIS _____ DAY OF _____, 1999, BEFORE ME A NOTARY PUBLIC IN AFORESAID STATE AND COUNTY, CAME VINCENT L. WILSON, MANAGING PARTNER OF A TO Z RECYCLING, L.L.C. TO ME PERSONALLY KNOWN TO BE THE SAME PERSON WHO EXECUTED THE FOREGOING INSTRUMENT OF WRITING AND DULY ACKNOWLEDGED THE EXECUTION OF SAME FOR AND ON BEHALF OF AND AS THE ACT AND DEED OF SAID CORPORATION, IN TESTIMONY WHEREOF I HAVE HERETO SET MY HAND AND AFFIXED MY NOTARIAL SEAL THE DAY AND YEAR ABOVE WRITTEN.

_____, NOTARY PUBLIC

MY APPOINTMENT EXPIRES: _____

WE, PRAIRIE STATE BANK IN HAYSVILLE, KANSAS, HOLDER OF A MORTGAGE ON THE ABOVE DESCRIBED PROPERTY, DO HEREBY CONSENT TO THE PLATTING OF HUNTINGTON POINTE ADDITION TO SEDGWICK COUNTY, KANSAS.

BY: _____
 JOHN E. HILTON, VICE PRESIDENT

STATE OF KANSAS }
 COUNTY OF SEDGWICK } SS

BE IT REMEMBERED ON THIS _____ DAY OF _____, 1999, BEFORE ME A NOTARY PUBLIC IN AFORESAID STATE AND COUNTY, CAME JOHN E. HILTON, VICE PRESIDENT OF PRAIRIE STATE BANK IN HAYSVILLE, KANSAS, TO ME PERSONALLY KNOWN TO BE THE SAME PERSON WHO EXECUTED THE FOREGOING INSTRUMENT OF WRITING AND DULY ACKNOWLEDGED THE EXECUTION OF SAME FOR AND ON BEHALF OF AND AS THE ACT AND DEED OF SAID BANK. IN TESTIMONY WHEREOF I HAVE HERETO SET MY HAND AND AFFIXED MY NOTARIAL SEAL THE DAY AND YEAR ABOVE WRITTEN.

_____, NOTARY PUBLIC

MY APPOINTMENT EXPIRES: _____

THIS PLAT SUBMITTED TO AND APPROVED BY THE WICHITA-SEDGWICK COUNTY METROPOLITAN AREA PLANNING COMMISSION, WICHITA, KANSAS. DATED THIS _____ DAY OF _____, 1999.

_____, CHAIRMAN
 WILLIAM M. JOHNSON
 _____, SECRETARY
 MARVIN S. KROUT

THIS PLAT IS APPROVED AND ALL DEDICATIONS SHOWN HEREON, IF ANY, ARE ACCEPTED BY THE CITY COUNCIL OF THE CITY OF WICHITA, KANSAS. DATED THIS _____ DAY OF _____, 1999.

_____, MAYOR
 BOB KNIGHT
 _____, CITY CLERK
 PAT BURNETT

THIS PLAT IS APPROVED AND ALL DEDICATIONS SHOWN HEREON, IF ANY, ARE ACCEPTED BY THE BOARD OF COUNTY COMMISSIONERS OF SEDGWICK COUNTY, KANSAS. DATED THIS _____ DAY OF _____, 1999.

_____, CHAIRMAN
 BILL HANCOCK
 _____, CHAIR PROTEM
 BETSY GWIN
 _____, COMMISSIONER
 THOMAS G. WINTERS
 _____, COMMISSIONER
 CAROLYN MCGINN
 _____, COMMISSIONER
 BEN SCIORTINO

_____, COUNTY CLERK
 JAMES ALFORD

ENTERED ON TRANSFER RECORD THIS _____ DAY OF _____, 1999.

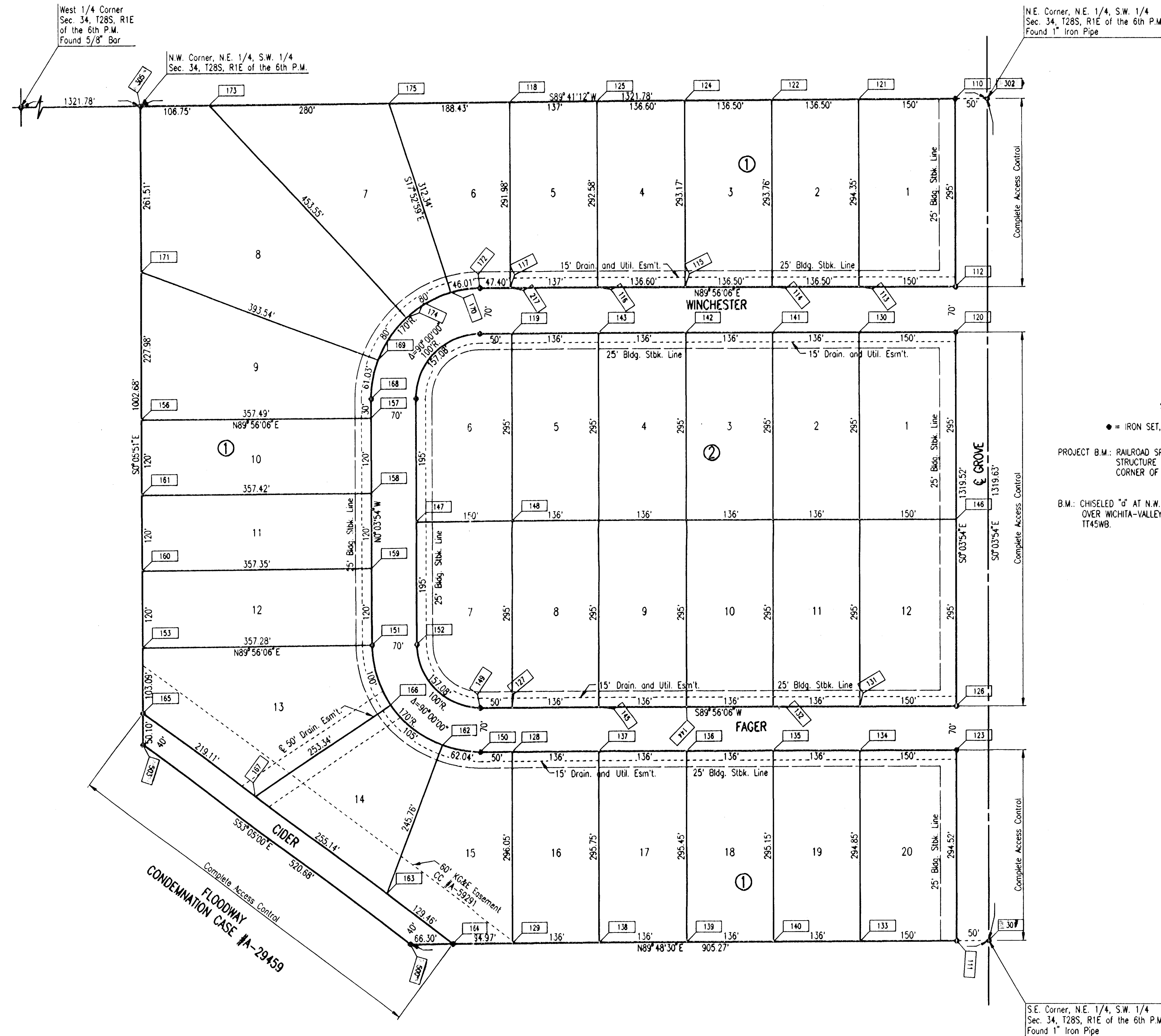
_____, COUNTY CLERK
 JAMES ALFORD

THIS IS TO CERTIFY THAT THIS INSTRUMENT WAS FILED FOR RECORD IN THE REGISTER OF DEEDS OFFICE AT _____ M., ON THIS _____ DAY OF _____, 1999.

_____, REGISTER OF DEEDS
 BILL MEEK

_____, DEPUTY
 LINDA KIZZIRE

HUNTINGTON POINTE ADDITION TO SEDGWICK COUNTY, KANSAS



SCALE: 1"=100'
 ● = IRON SET, UNLESS NOTED OTHERWISE
 PROJECT B.M.: RAILROAD SPIKE ON WEST FACE OF NORTH POLE STRUCTURE OF HIGHLINE ELECTRIC NEAR S.E. CORNER OF PROPERTY. ELEV.=1257.20 N.V.G.D.
 B.M.: CHISELED 'G' AT N.W. CORNER OF HUBGUARD ON BRIDGE OVER WICHITA-VALLEY CENTER FLOODWAY FROM U.S.G.S. T145WB. ELEV.=1268.58 N.V.G.D.

STATE OF KANSAS }
 COUNTY OF SEDGWICK } SS

WE, PROFESSIONAL ENGINEERING CONSULTANTS, P.A., ENGINEERS AND SURVEYORS IN AFORESAID STATE AND COUNTY, DO HEREBY CERTIFY ON THIS DAY OF _____, 1999, THAT WE HAVE SURVEYED AND PLATTED HUNTINGTON POINTE ADDITION TO SEDGWICK COUNTY, KANSAS, INTO LOTS, BLOCKS, AND STREETS THE SAME BEING DESCRIBED AS:

THE NORTHEAST QUARTER OF THE SOUTHWEST QUARTER OF SECTION 34, TOWNSHIP 28 SOUTH, RANGE 1 EAST OF THE SIXTH PRINCIPAL MERIDIAN, SEDGWICK COUNTY, KANSAS, EXCEPT THAT PART CONDEMNATED FOR FLOODWAY IN DISTRICT COURT CASE #A-29459.

ROADWAY EASEMENT AS PER ROAD RECORD BOOK A, PAGE 51, IS HEREBY VACATED AND REPLATTED BY K.S.A. 12-512 (b) AMENDED.

JAMES R. BECKETT, R. L. S. NO. 832
 PROFESSIONAL ENGINEERING CONSULTANTS, P.A.

KNOW ALL MEN BY THESE PRESENTS THAT WE, THE UNDERSIGNED PROPERTY OWNERS OF THE LAND AS ABOVE SET FORTH IN THE SURVEYOR'S CERTIFICATE, HAVE CAUSED THE LAND TO BE SURVEYED AND PLATTED INTO LOTS, BLOCKS, AND STREETS THE SAME TO BE KNOWN AS HUNTINGTON POINTE ADDITION TO SEDGWICK COUNTY, KANSAS.

EASEMENTS FOR THE CONSTRUCTION AND MAINTENANCE OF PUBLIC UTILITIES AND DRAINAGE ARE HEREBY GRANTED.

ALL ABUTTERS' RIGHT OF ACCESS TO AND FROM GROVE AND CEDAR STREETS OVER AND ACROSS THE EAST LINE OF LOTS 1 AND 20, BLOCK 1, LOTS 1 AND 12, BLOCK 2, AND THE SOUTHWESTERLY LINE OF LOTS 13, 14 AND 15, BLOCK 1, AS SHOWN ARE HEREBY GRANTED TO THE APPROPRIATE GOVERNING BODY. A DRAINAGE PLAN HAS BEEN APPROVED FOR THIS PLAT. ALL DRAINAGE EASEMENTS AND RIGHTS-OF-WAY SHALL REMAIN AT ESTABLISHED GRADES AND UNOBSTRUCTED TO ALLOW FOR THE CONVEYANCE OF STORMWATER, UNLESS MODIFIED WITH THE APPROVAL OF THE APPLICABLE CITY OR COUNTY ENGINEER.

OWNER: HUNTINGTON POINT DEVELOPMENT, L.L.C.

BY: PAUL E. MAHONEY, MANAGING PARTNER

STATE OF KANSAS }
 COUNTY OF SEDGWICK } SS

THIS INSTRUMENT WAS ACKNOWLEDGED BEFORE ME ON _____, 1999, BY PAUL E. MAHONEY, MANAGING PARTNER OF HUNTINGTON POINT DEVELOPMENT, L.L.C.

_____, NOTARY PUBLIC

MY APPOINTMENT EXPIRES: _____

THIS PLAT OF HUNTINGTON POINTE ADDITION HAS BEEN SUBMITTED TO AND APPROVED BY THE WICHITA-SEDGWICK COUNTY METROPOLITAN AREA PLANNING COMMISSION, WICHITA, KANSAS.

DATED THIS _____ DAY OF _____, 1999.

WICHITA-SEDGWICK COUNTY METROPOLITAN AREA PLANNING COMMISSION

BY: WILLIAM M. JOHNSON, CHAIRMAN

MARVIN S. KROUT, SECRETARY

THIS PLAT IS APPROVED AND ALL DEDICATIONS SHOWN HEREON, IF ANY, ARE ACCEPTED BY THE CITY COUNCIL OF THE CITY OF WICHITA, KANSAS, THIS _____ DAY OF _____, 1999.

BOB KNIGHT, MAYOR

PAT BURNETT, CITY CLERK

THIS PLAT IS APPROVED AND ALL DEDICATIONS SHOWN HEREON, IF ANY, ARE ACCEPTED BY THE BOARD OF COUNTY COMMISSIONERS OF SEDGWICK COUNTY, KANSAS, THIS _____ DAY OF _____, 1999.

BILL HANCOCK, CHAIRMAN

JAMES ALFORD, COUNTY CLERK

ENTERED ON TRANSFER RECORD THIS _____ DAY OF _____, 1999.

JAMES ALFORD, COUNTY CLERK

THIS IS TO CERTIFY THAT THIS INSTRUMENT WAS FILED FOR RECORD IN THE REGISTER OF DEEDS OFFICE AT _____ A.M. - P.M., ON THE _____ DAY OF _____, 1999.

BILL MEEK, REGISTER OF DEEDS

LINDA KIZZIRE, DEPUTY

DSNR: GJM OPER: DMW SCALE: 1"=100.00
 03/19/98 08:27:55 BUBBLE MAP 05-03-1999 12:29:19 am