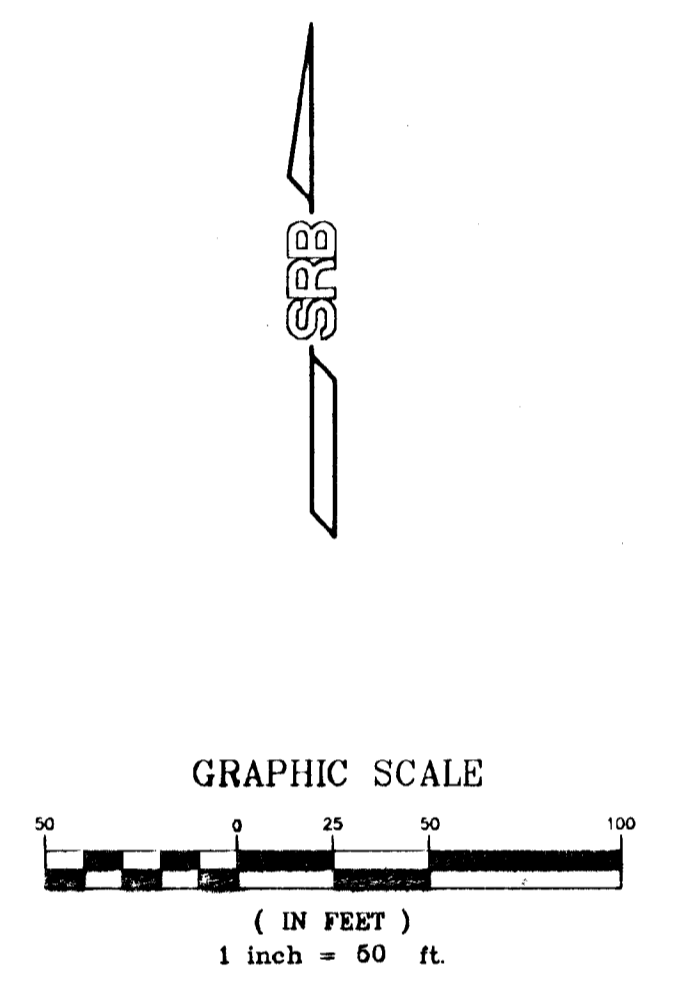
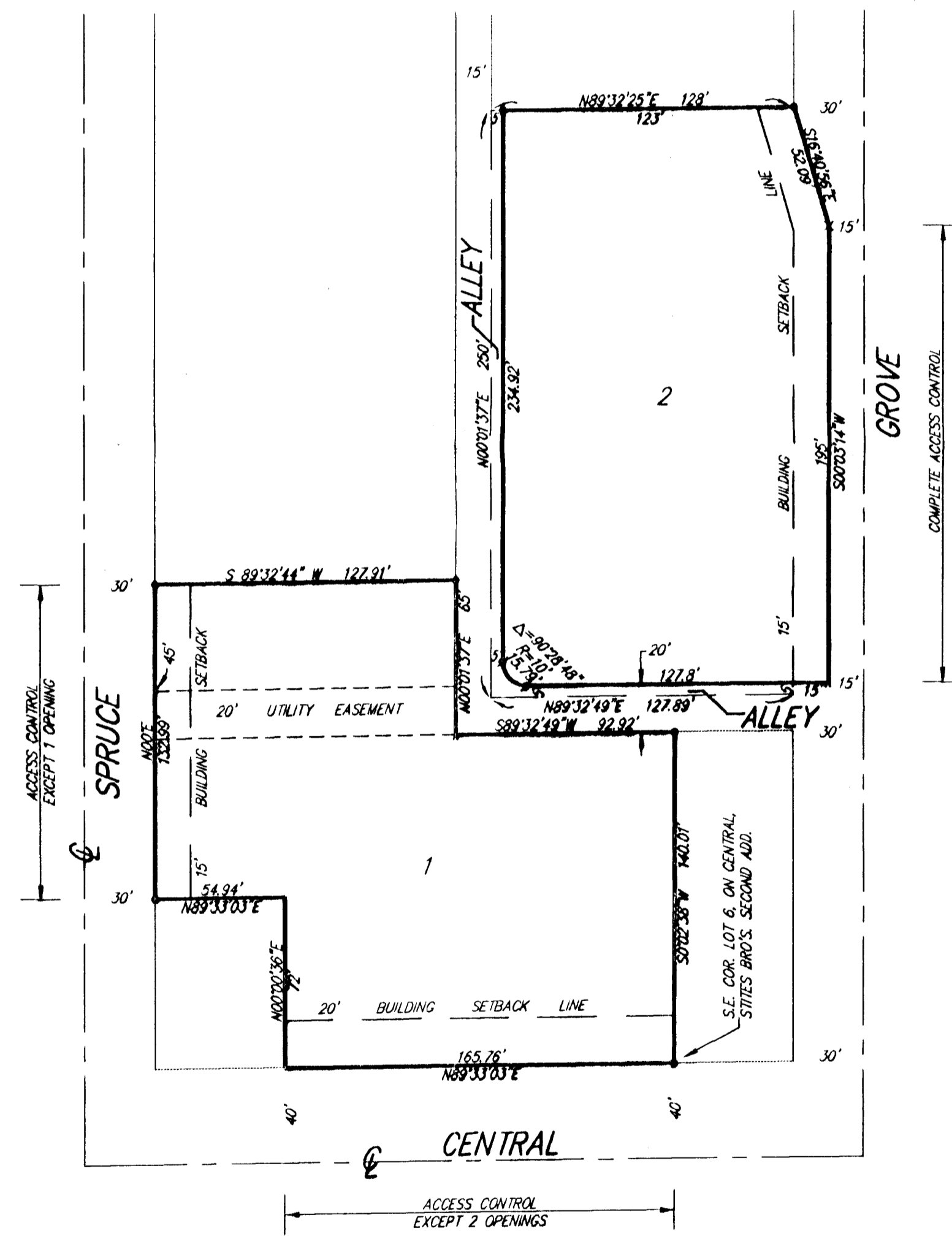


HUNTER HEALTH CLINIC ADDITION

WICHITA, SEDGWICK COUNTY, KANSAS



- o = 1" IRON PIPE (FOUND)
- ^ = CHISELED "V" NOTCH (SET)
- x = CHISELED CROSS (SET)
- = MAGNETIC NAIL (SET)
- = 1/2" REBAR W/SRB CAP (SET)

State of Kansas)
Sedgwick County) SS

We, Savoy, Ruggles & Bohm, P.A., Surveyors in aforesaid county and state do hereby certify that, under the supervision of the undersigned, we have surveyed and platted "HUNTER HEALTH CLINIC ADDITION", Wichita, Sedgwick County, Kansas and that the accompanying plat is a true and correct exhibit of the property surveyed, described as follows:

Lots 1 thru 19 odd on Grove, together with that part of vacated Grove lying east of and adjacent to said Lots and described as beginning at a point 5 feet north of the S.E. Corner of said Lot 1; thence N00°03'14"E, 245.02 feet to the N.E. Corner of said Lot 19; thence S16°40'56"E, 52.09 feet; thence S00°03'14"W, 195 feet; thence S89°32'49"E, 15 feet to the place of beginning, and Lots 2 and 4 on Spruce together with the N1/2 of vacated Alley lying south of and adjacent to said Lots and Lot 6 thru 22 even on Central, except the west 5 feet of the south 72 feet of said Lot 8 and except the south 72 feet of said Lots 20 and 22, together with the S1/2 of vacated Alley lying north of and adjacent to said Lots 12 thru 22, lying west of the east line of said Lot 2 on Spruce extended south, all in Sites Bro's. Second Addition to Wichita, Kansas, Sedgwick County, Kansas.

All being situated in the SW1/4 of Sec. 15, Twp. 27-S, R-1-E of the 6th P.M., Sedgwick County, Kansas.

All Public easements and dedications being vacated by virtue of K.S.A. 12-512(b).

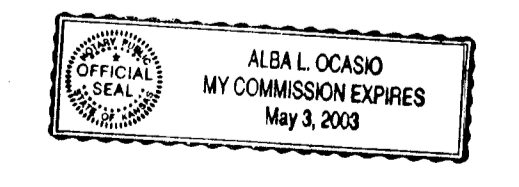
Date 18 JAN 2000
Savoy, Ruggles & Bohm, P.A.
Mark A. Savoy RLS #788
Surveyor

Know all men by these presents that we, the undersigned, have caused the land described in the surveyors certificate to be platted into Lots, and Alleys, to be known as "HUNTER HEALTH CLINIC ADDITION", Wichita, Sedgwick County, Kansas. The Alleys are hereby dedicated to and for the use of the public. The utility easement is hereby granted as indicated for the construction and maintenance of all public utilities. Access Controls are hereby granted to the appropriate governing body (as indicated on the face of the plat). A drainage plan has been developed for this plat and all drainage easements, and rights-of-way shall remain at established grades or as modified with the approval of the County Engineer, and unobstructed to allow for the conveyance of stormwater.

The Hunter Health Clinic, Inc.
Maik Brown
Chairman of the Board of Trustees

State of Kansas)
Sedgwick County) SS
The foregoing instrument acknowledged before me, this 24th day of JANUARY, 2000, by Mark Brown, Chairman of the Board of Trustees, of The Hunter Health Clinic, Inc., on behalf of the Corporation.

My App't. Exp. 5/3/2003
Alma L. Ocasio
Notary Public



This plat of "HUNTER HEALTH CLINIC ADDITION", Wichita, Sedgwick County, Kansas, has been submitted to and approved by the Wichita-Sedgwick County Metropolitan Area Planning Commission, Wichita, Kansas.
Dated this _____ day of _____, 1999.

Wichita-Sedgwick County Metropolitan Area Planning Commission

William M. Johnson Chairman

Marvin S. Krout Secretary

This plat approved and all dedications shown hereon, accepted by the City Council of the City of Wichita, Kansas, this _____ day of _____, 2000.

Bob Knight Mayor

Pat Burnett City Clerk

Reviewed in accordance with K.S.A. 58-2005 on this _____ day of _____, 2000.

Tricia L. Robello, LS #1246
Deputy County Surveyor
Sedgwick County Kansas

State of Kansas)
Sedgwick County) SS
This is to certify that this plat has been filed for record in the office of the Register of Deeds, this _____ day of _____, 2000, at _____ o'clock _____ M. and is duly recorded.

Bill Meek
Register of Deeds

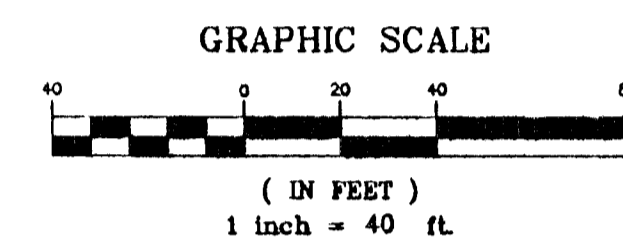
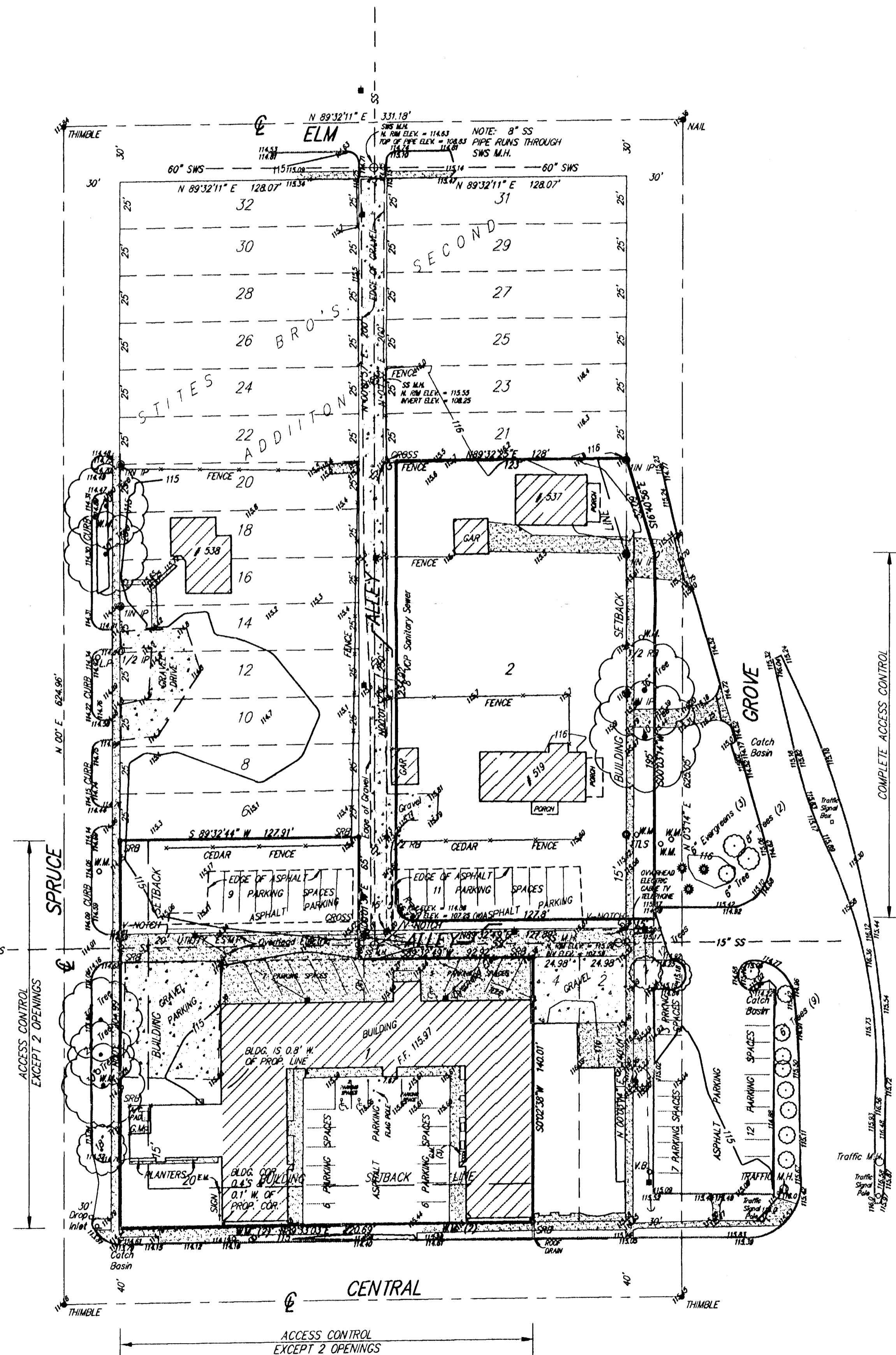
Entered on transfer record this _____ day of _____, 2000.

Linda Kizzire Deputy

James Alford County Clerk

SKETCH PLAT HUNTER HEALTH CLINIC ADDITION

WICHITA, SEDGWICK COUNTY, KANSAS



- LEGEND
- PRO = Proposed
 - M = Measured
 - D = Described
- ⊠ TELE. PED TELEPHONE PEDESTAL
 - ⊙ G.M. GAS METER
 - ⊙ W.M. WATER METER
 - ⊙ L.P. LIGHT POLE
 - ⊙ V.B. VALVE BOX
 - POWER POLE
 - HIGH LINE POLE
 - ← GUY ANCHOR
 - 4 SIGN
 - ⊙ GAS REG. NATURAL GAS REGULATOR
 - ⊙ SWS M.H. STORM WATER SEWER MANHOLE
 - ⊙ SS M.H. SANITARY SEWER MANHOLE

LEGAL DESCRIPTION:

Lots 1, through 19 odd on Grove, Lots 2 and 4 on Spruce and Lots 6 through 22 even on Central, Stiles Bro's. Second Addition to Wichita, Kansas, Sedgwick County, Kansas.

Hunter Health Clinic, Inc.
2318 E. Central
Wichita, Kansas 67214

Ph. 262-3611

GROSS SIZE:
74,501.97 Sq. Ft.±
1.71 Acres

NET SIZE:
72,615.65 Sq. Ft.±
1.67 Acres±

Bench Mark: City of Wichita Std. elev. S.W. Corner of Central Ave. & Grove, 36' N. of Centerline of Median in Grove & 66' S. of Centerline of Central Ave. Elev. = 118.41 (City of Wichita Datum)

On Site B.M.: "13" Out Top of curb S. curb return at N.E. Corner of Central & Spruce Elev. = 114.55 (City of Wichita Datum)