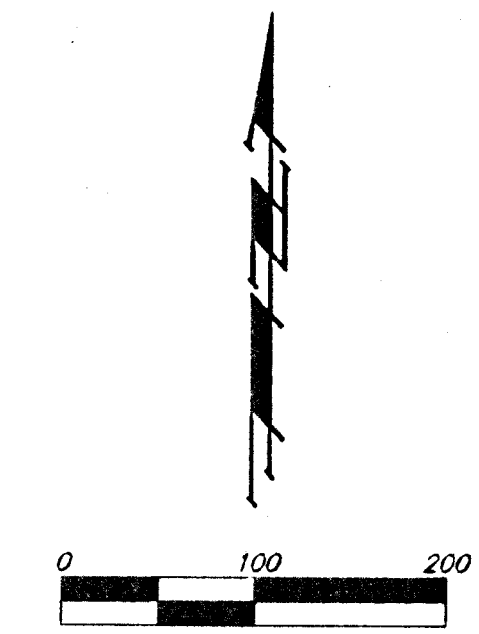


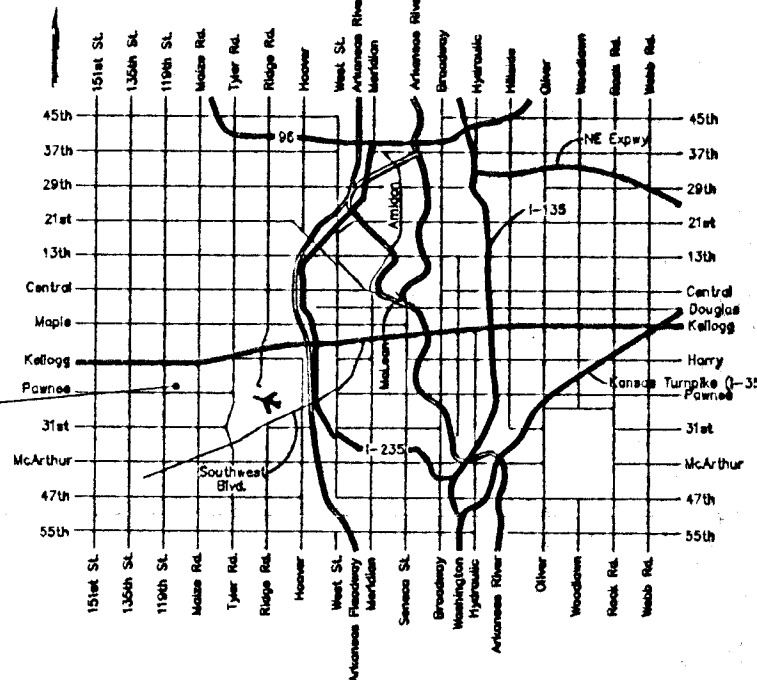
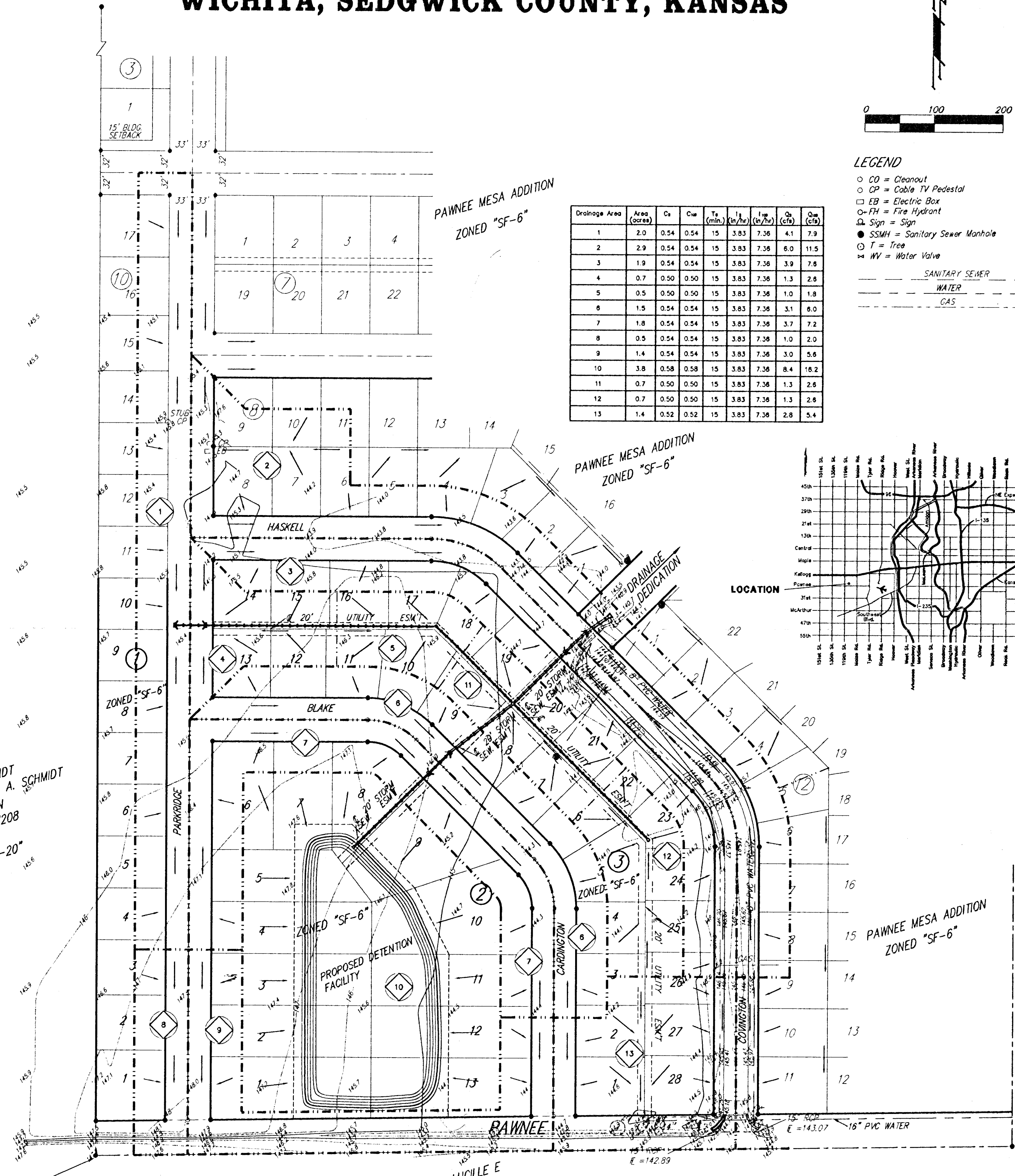
DRAINAGE CONCEPT HUNTERS RIDGE ADDITION WICHITA, SEDGWICK COUNTY, KANSAS



LEGEND

- CO = Cleanout
- CP = Cable TV Pedestal
- EB = Electric Box
- FH = Fire Hydrant
- △ Sign = Sign
- SSMH = Sanitary Sewer Manhole
- T = Tree
- WV = Water Valve
- SANITARY SEWER
- WATER
- GAS

Drainage Area	Area (Acres)	C _s	C _w	T ₁ (min)	T ₂ (min)	T ₃ (min)	T ₄ (min)	T ₅ (min)	T ₆ (min)	T ₇ (min)	T ₈ (min)	T ₉ (min)	T ₁₀ (min)
1	2.0	0.54	0.54	15	3.83	7.36	4.1	7.9					
2	2.9	0.54	0.54	15	3.83	7.36	6.0	11.5					
3	1.9	0.54	0.54	15	3.83	7.36	3.9	7.8					
4	0.7	0.50	0.50	15	3.83	7.36	1.3	2.8					
5	0.5	0.50	0.50	15	3.83	7.36	1.0	3.8					
6	1.5	0.54	0.54	15	3.83	7.36	3.1	8.0					
7	1.8	0.54	0.54	15	3.83	7.36	3.7	7.2					
8	0.5	0.54	0.54	15	3.83	7.36	1.0	2.0					
9	1.4	0.54	0.54	15	3.83	7.36	3.0	5.8					
10	3.8	0.58	0.58	15	3.83	7.36	8.4	18.2					
11	0.7	0.50	0.50	15	3.83	7.36	1.3	2.8					
12	0.7	0.50	0.50	15	3.83	7.36	1.3	2.8					
13	1.4	0.52	0.52	15	3.83	7.36	2.8	5.4					



E. SEVERIN SCHMIDT
MAIL % KENNETH A. SCHMIDT
336 N FOUNTAIN
WICHITA, KS 67208
ZONED "SF-20"

OWNER:
GREYSTONE CONSTRUCTION INC.
ATTN: QUENTIN MOEDER
4700 W IRVING
WICHITA, KS 67209

JACOBS, LUCILLE E
REVOC LIV TRUST
135 N RICHMOND
WICHITA, KS 67203

BENCHMARK:
COW BENCH MARK DISC 1/2 MILE EAST OF 19TH ST.
SOUTH SIDE OF PAWNEE, 34' SOUTH OF CTR LINE
PAWNEE AND 6' WEST OF HEDGE ROW SOUTH.
ELEV: 145.50

LEGAL:
A PLAT OF LOTS 1 THROUGH 28, BLOCK 9, AND LOTS 1 THROUGH 10,
BLOCK 10, AND LOTS 1 THROUGH 25, BLOCK 11, TOGETHER WITH THAT
PART OF PARKRIDGE LYING EAST OF AND ADJACENT TO LOTS 1
THROUGH 10 IN SAID BLOCK 10, AND THAT PART OF BLAKE AND
CARDINGTON LYING BETWEEN SAID BLOCKS 9 AND 11, AND ALL OF
BLAKE CT. LYING IN SAID BLOCK 11, ALL AS PLATTED IN PAWNEE MESA
ADDITION, AN ADDITION TO SEDGWICK COUNTY, KANSAS.

November 24, 1998