

HUNTERS RIDGE ADDITION

WICHITA, SEDGWICK COUNTY, KANSAS

State of Kansas) SS We, Baughman Company, P.A., Surveyors in
Sedgwick County) do hereby certify that we have surveyed and
platted "HUNTERS RIDGE ADDITION", Wichita, Sedgwick County, Kansas,
and that the accompanying plat is a true and correct exhibit of the
property surveyed, described as and being a replat of Lots 1 through 28,
Block 9, and Lots 1 through 10, Block 10, and Lots 1 through 25, Block
11, TOGETHER with that part of Parkridge lying east of and adjacent to
Lots 1 through 10 in said Block 10, and that part of Blake and Cardington
lying between said Blocks 9 and 11, and all of Blake Ct. lying in said
Block 11, all as platted in Pawnee Mesa Addition, an Addition to Sedgwick
County, Kansas.

Existing easements and dedications being vacated by virtue
of K.S.A. 12-512(b).

All being situated in the E1/2 of the SW1/4 of Sec. 31, Twp. 27-S,
R-1-W of the 6th P.M., Sedgwick County, Kansas.

Baughman Company, P.A.

Know all men by these presents that we,
the undersigned, have caused the land in the surveyors certificate to be
platted into Lots, Blocks, and Streets, to be known as "HUNTERS RIDGE
ADDITION", Wichita, Sedgwick County, Kansas. The utility easements are
hereby granted as indicated for the construction and maintenance of all
public utilities. The drainage and utility easements are hereby granted
as indicated for drainage purposes and for the construction and
maintenance of all public utilities. The drainage easements are hereby
granted as indicated for drainage purposes. The streets are hereby
dedicated to and for the use of the public. All abutters rights of access
to or from Pawnee Ave. over and across the south line of Lot 1, Block A,
and over and across the south line of Lots 1 and 13, Block B, and over
and across the south line of Lots 1 and 28, Block C are hereby granted to
the City of Wichita, Kansas. The Minimum Building Pad Elevations for
the lowest opening to the structures shall be as indicated on the face
of the plat.

Greystone Construction, Inc.

This plat of "HUNTERS RIDGE ADDITION",
Wichita, Sedgwick County, Kansas has been submitted to and
approved by the Wichita-Sedgwick County Metropolitan Area Planning
Commission, Wichita, Kansas.
Dated this _____ day of _____, 1999,
Wichita-Sedgwick County Metropolitan Area Planning Commission

William M. Johnson, Chairman
William M. Johnson

Marvin S. Krout, Secretary
Marvin S. Krout

Quentin Moeder, Vice-President
Quentin Moeder

This plat approved and all dedications
shown hereon accepted by the City Council of the City of Wichita,
Kansas, this _____ day of _____, 1999.

State of Kansas) SS The foregoing instrument acknowledged be-
fore me, this _____ day of _____, 1999, by Quentin Moeder, Vice-
President of Greystone Construction, Inc., on behalf of the corporation.

_____, Mayor
Bob Knight

_____, City Clerk
Pat Burnett

JUDITH M. TERHUNE
Notary Public - State of Kansas
My App't. Expires 11-7-2001

Judith M. Terhune, Notary Public
JUDITH M. TERHUNE

My App't. Exp. 11-7-2001

We the undersigned, holders of a mortgage
on the above described property, do hereby consent to this plat of
"HUNTERS RIDGE ADDITION", Wichita, Sedgwick County, Kansas.

Emprise Bank

Entered on transfer record this _____ day
of _____, 1999.

_____, County Clerk
James Alford

Sam E. Trummel, 3/2/99
SAM E. TRUMMEL

State of Kansas) SS This is to certify that this plat has been
filed for record in the office of the Register of Deeds, this _____ day
of _____, 1999, at _____ o'clock _____ M.; and is duly recorded.

_____, Register of Deeds
Bill Meek

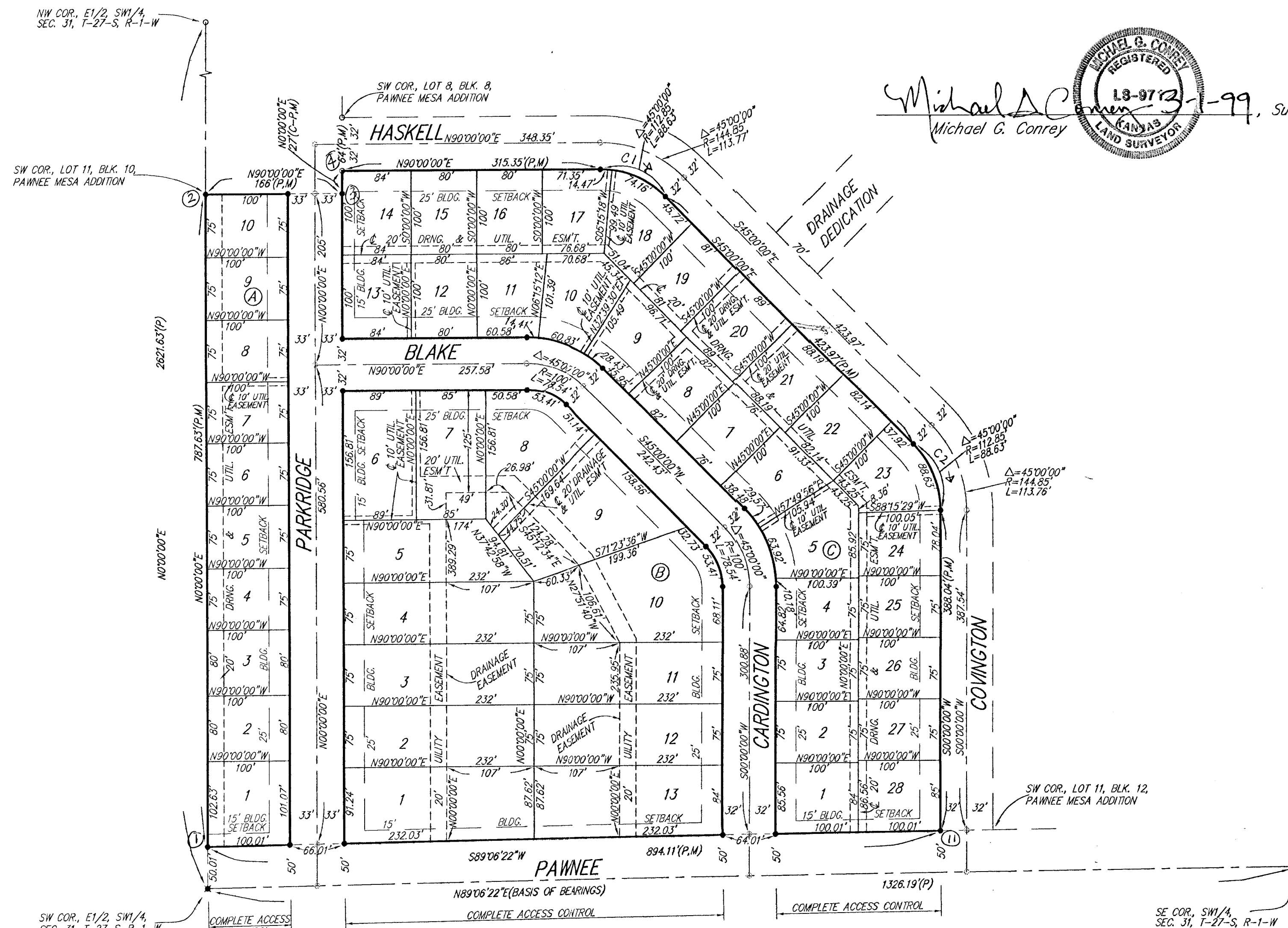
_____, Deputy
Linda Kizzire

State of Kansas) SS The foregoing instrument acknowledged be-
fore me, this _____ day of _____, 1999, by SAM E. TRUMMEL,
SR. VICE-PRESIDENT of Emprise Bank, on behalf of the bank.

Judith M. Terhune, Notary Public
JUDITH M. TERHUNE

My App't. Exp. 11-7-2001

JUDITH M. TERHUNE
Notary Public - State of Kansas
My App't. Expires 11-7-2001



Michael G. Conrey, Surveyor
MICHAEL G. CONREY
REGISTERED
13-9712
KANSAS
LAND SURVEYOR

BLOCK	LOT(S)	ELEVATION (PER CITY DATUM)
B	1-13	145.0

BENCHMARK:
CITY OF WICHITA BENCHMARK DISC -
1/2 MI. EAST OF 119TH ST., N. ON
SOUTH SIDE OF PAWNEE, 34' SOUTH
OF E. OF PAWNEE, 8' WEST OF
HEDGE ROW SOUTH
ELEV. = 145.50 CITY DATUM

- = #4 REBAR (FOUND)
- = #5 REBAR (FOUND)
- = 1/2" IRON (FOUND)
- = #4 REBAR W/ "BAUGHMAN" CAP (FOUND)

- (M) = MEASURED
- (P) = PLATTED
- (C-P) = CALCULATED PER
PLATTED INFO.

