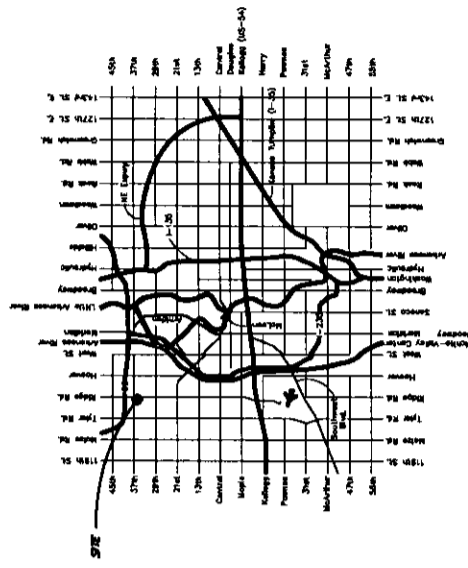
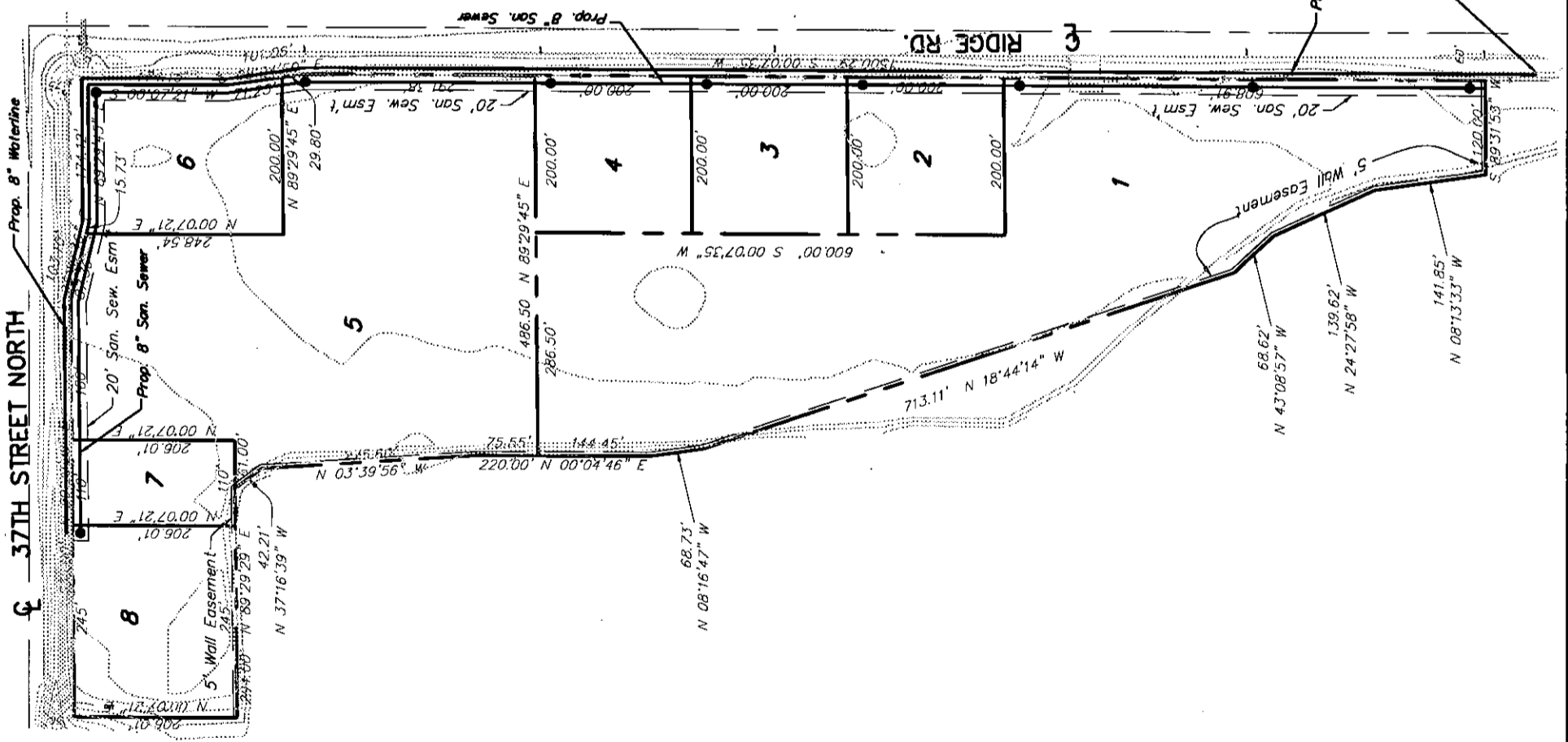
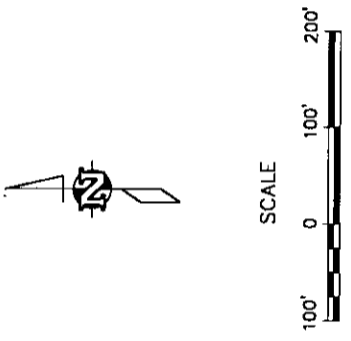


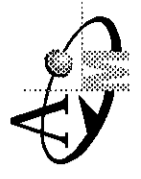
# HOSKINSON 2ND ADDITION UTILITY PLAN

- NOTES:**  
 Water line to be connected to existing water line of West side of Ridge Road approximately 1970 feet North of the Center Line of 29th Street.
- Sanitary sewer extensions to be sized and connected to city mains according to study currently being conducted.



**LOCATION MAP**

99102/01814



**AUSTIN ENGINEERING SERVICES**  
 254 S. Lamar, Suite 210, Austin, TX 78701  
 512/476-1181 Fax: 512/476-4773