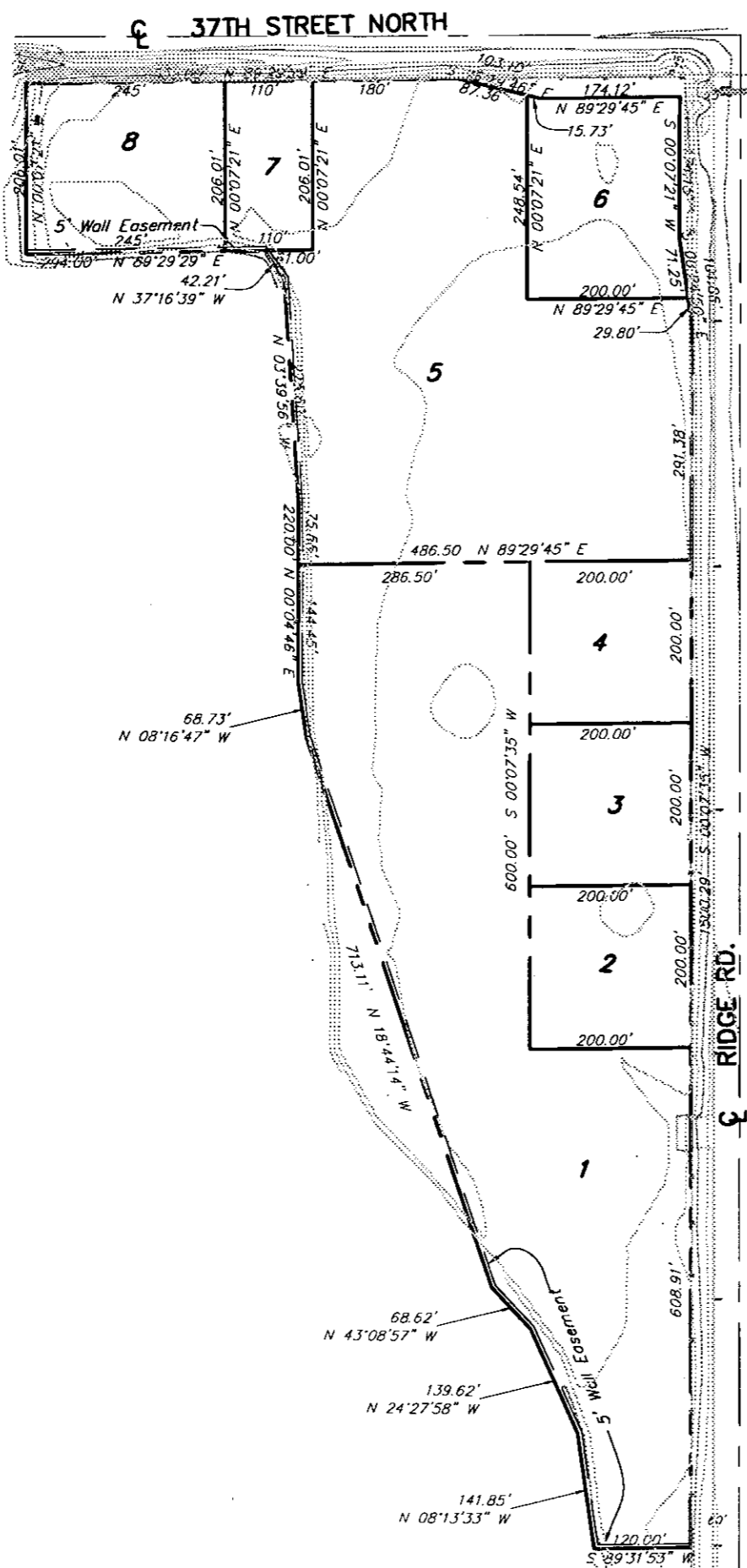


**HOSKINSON 2ND ADDITION**



*Min Pad.  
Flood way  
Flood Plain*

State of Kansas ) ss  
Sedgewick County ) ss  
I, the undersigned licensed land surveyor in aforesaid county and state, do hereby certify that, under the supervision of the undersigned, we have surveyed and plotted "HOSKINSON 2ND ADDITION", Sedgewick County, Kansas and that the accompanying plat is a true and correct exhibit of the property surveyed, described as follows:

A TRACT OF LAND IN THE E 1/2 OF THE NE 1/4 OF SECTION 33, TOWNSHIP 26 SOUTH, RANGE 1 WEST OF THE 6TH P.M. DESCRIBED AS FOLLOWS: COMMENCING AT THE N.E. CORNER OF THE N.E. 1/4 OF SAID SECTION 33; THENCE BEARING S 89°29'08" W ALONG THE NORTH LINE OF SAID N.E. 1/4 A DISTANCE OF 75.84 FEET; THENCE BEARING S 00°30'52" E A DISTANCE OF 75.00 FEET TO THE POINT OF BEGINNING; THENCE BEARING S 00°07'21" W PARALLEL TO AND 75 FEET WEST OF THE EAST LINE OF SAID N.E. 1/4, A DISTANCE OF 174.15 FEET; THENCE BEARING S 08°24'50" E A DISTANCE OF 101.08 FEET; THENCE BEARING S 00°07'35" W PARALLEL TO AND 80 FEET WEST OF THE EAST LINE OF SAID N.E. 1/4 A DISTANCE OF 1500.29 FEET; THENCE BEARING S 89°31'53" W A DISTANCE OF 120.00 FEET; THENCE BEARING N 08°13'33" W A DISTANCE OF 141.85 FEET; THENCE BEARING N 24°27'58" W A DISTANCE OF 139.62 FEET; THENCE BEARING N 43°08'57" W A DISTANCE OF 68.62 FEET; THENCE N 18°44'14" W A DISTANCE OF 713.11 FEET; THENCE BEARING N 08°16'42" W A DISTANCE OF 68.73 FEET; THENCE BEARING N 00°04'46" W A DISTANCE OF 220 FEET; THENCE BEARING N 03°39'56" W A DISTANCE OF 275.60 FEET; THENCE BEARING N 37°16'39" W A DISTANCE OF 42.21 FEET; THENCE BEARING S 89°29'29" W A DISTANCE OF 294.00 FEET; THENCE BEARING N 00°07'21" E A DISTANCE OF 206.01 FEET; THENCE BEARING N 89°29'29" E A DISTANCE OF 335.00 FEET; THENCE BEARING S 76°29'46" E A DISTANCE OF 103.10 FEET; THENCE BEARING N 89°29'45" E PARALLEL TO AND 75.00 FEET SOUTH OF THE NORTH LINE OF SAID N.E. 1/4 A DISTANCE OF 174.12 FEET TO THE POINT OF BEGINNING.

State of Kansas ) ss  
Sedgewick County ) ss  
This is to certify that this plat has been filed for record in the office of the Register of Deeds, this \_\_\_ day of \_\_\_\_\_, 1999, at \_\_\_\_\_ o'clock \_\_\_\_\_; and is duly recorded.

\_\_\_\_\_, Register of Deeds  
Bill Meek  
\_\_\_\_\_, Deputy  
Linda Kizzire

State of Kansas ) ss  
Sedgewick County ) ss  
This plat of "HOSKINSON 2ND ADDITION", Wichita, Sedgewick County, Kansas, has been submitted to and approved by the Wichita-Sedgewick County Metropolitan Area Planning Commission, Wichita, Kansas.  
Dated this \_\_\_ day of \_\_\_\_\_, 1999.  
Wichita-Sedgewick County Metropolitan Area Planning Commission.

\_\_\_\_\_, Chair  
William M. Johnson  
\_\_\_\_\_, Secretary  
Marvin S. Kroul

\_\_\_\_\_, Surveyor  
Steven Brassmer

State of Kansas ) ss  
Sedgewick County ) ss  
Know all men by these presents, that we, the undersigned, have caused the land described in the surveyor's certificate to be platted into Lots and Blocks to be known as "HOSKINSON 2ND ADDITION", Sedgewick County, Kansas. The utility easements are hereby granted as indicated for constructing, maintaining, operating, and repairing public improvements.

State of Kansas ) ss  
Sedgewick County ) ss

The dedications shown on this plat, if any, are hereby accepted by the Board of County Commissioners, Sedgewick County, Kansas on \_\_\_\_\_ 19\_\_\_\_.

Date \_\_\_\_\_  
By: \_\_\_\_\_  
Mike Boyd,  
Member, Box Development, L.L.C.

\_\_\_\_\_, Chairman Pro Tem  
Bill Hancock

Entered on transfer record this \_\_\_ day of \_\_\_\_\_, 19\_\_\_\_.

\_\_\_\_\_, County Clerk  
James Alford

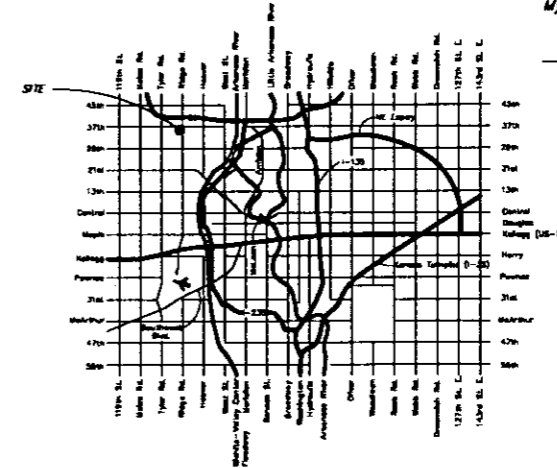
State of Kansas ) ss  
Sedgewick County ) ss

BE IT REMEMBERED, that on this \_\_\_ day of \_\_\_\_\_, 1999, before me, the undersigned, a notary public in and for the County and State aforesaid, came MIKE BOYD, Member, BOX DEVELOPMENT, L.L.C., a Kansas limited liability company, for and on behalf of said limited liability company, to me personally known to be the same person who executed this instrument and such person duly acknowledged the execution of the same.

IN WITNESS WHEREOF, I have hereunto set my hand and affixed my official seal the day and year first above written.

My appointment expires: \_\_\_\_\_

\_\_\_\_\_, Notary Public



**LOCATION MAP**

99102/PLAT

**AUSTIN MILLER P.A.**  
ENGINEERING SERVICES  
234 S. Laurel, Suite 210, Wichita, KS 67211  
316/262-1281 fax 316/262-6773