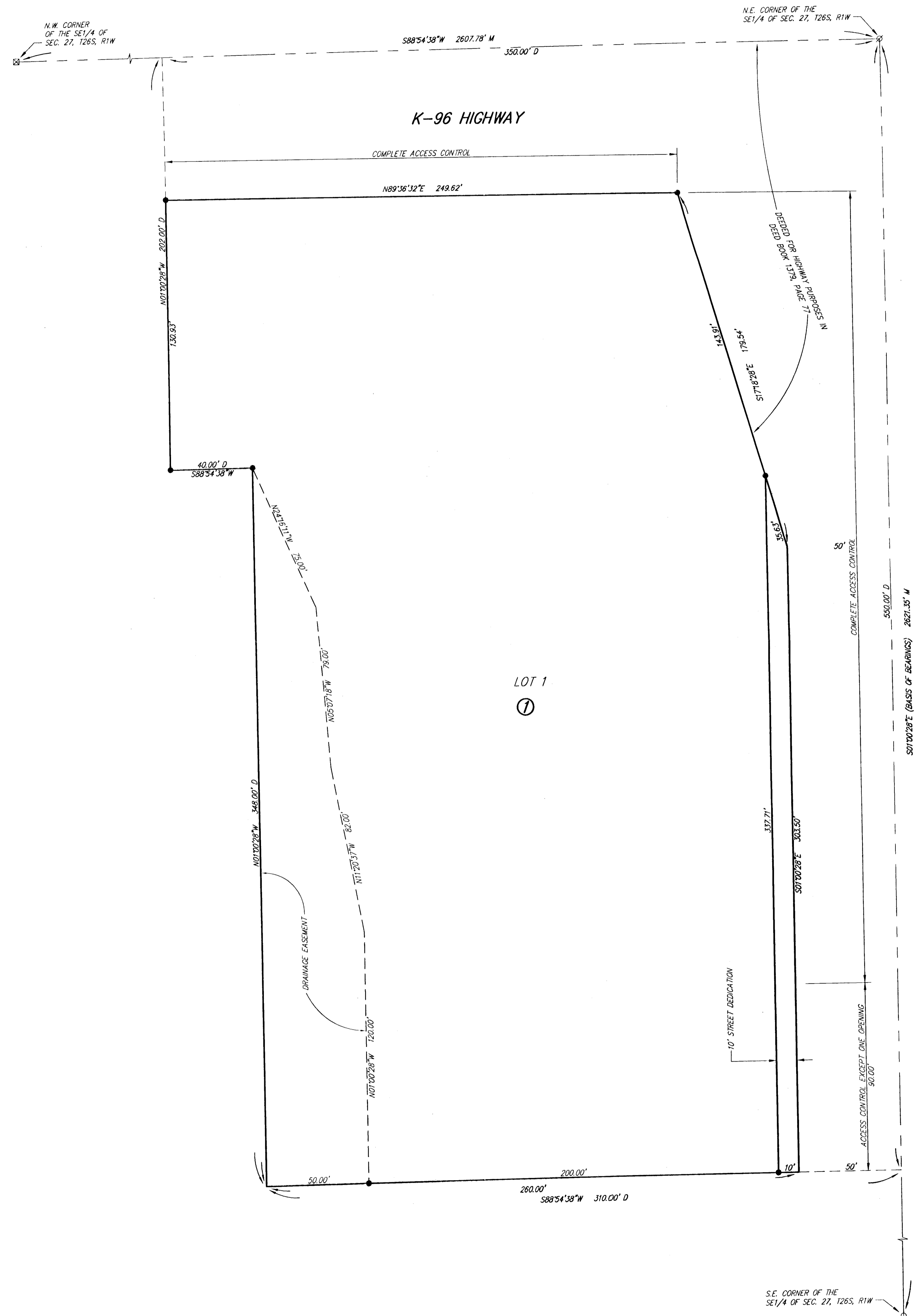


HOOVER COMMERCIAL

an Addition to Sedgwick County, Kansas



State of Kansas)
Sedgwick County) SS

We, Ruggles & Bohm, P.A., Land Surveyors in aforesaid county and state, do hereby certify that, under the supervision of the undersigned, we have surveyed and platted "HOOVER COMMERCIAL", an Addition to Sedgwick County, Kansas, and that the accompanying plat is a true and correct exhibit of the property surveyed, described as follows:

That part of the SE1/4 of Sec. 27, T26S, R1W of the 6th P.M., Sedgwick County, Kansas, Described as beginning at the Northeast corner of said SE1/4; thence S01°00'28"E along the east line of said SE1/4, 550.00 feet; thence S88°54'38"W, parallel with the north line of said SE1/4, 310.00 feet; thence N01°00'28"W, parallel with said east line, 348.00 feet; thence S88°54'38"W, parallel with said north line, 40.00 feet; thence N01°00'28"W, parallel with said east line, 202.00 feet to said north line; thence N88°54'38"E along said north line, 350.00 feet to the place of beginning, EXCEPT the East 50.00 feet for road, AND EXCEPT that part deeded for highway purposes in Deed Book 1379, Page 77.

All public easements and dedications are hereby vacated by virtue of K.S.A. 12-512(b).

Ruggles & Bohm, P.A.

Thomas C. Ruggles
Land Surveyor

Know all men by these presents that we, the undersigned, have caused the land described in the surveyor's certificate to be platted into a Lot, and a Block, to be known as "HOOVER COMMERCIAL", an Addition to Sedgwick County, Kansas. The drainage easement is hereby granted to the public as indicated for drainage purposes. Access Controls as indicated are hereby granted to the appropriate governing body. A drainage plan has been developed for this plat and all drainage easements shall remain at established grades, or as modified with the approval of the applicable City or County Engineer, and unobstructed to allow for the conveyance of storm water.

Leslie A. Eck Revocable Trust

Leslie A. Eck
Trustee

State of Kansas)
Sedgwick County) SS

The foregoing instrument acknowledged before me, this _____ day of _____, 2008, by Leslie A. Eck, Trustee of the Leslie A. Eck Revocable Trust.

Notary Public

My appointment expires _____



- SURVEY MARKER LEGEND**
- ☒ CONCRETE NAIL IN STONE (FOUND - ORIGIN UNKNOWN)
 - 5/8" REBAR W/CAP (FOUND - ORIGIN UNKNOWN)
 - ⊗ 5/8" REBAR W/CARBUR CAP (FOUND)
 - 5/8" REBAR W/RUGGLES & BOHM CAP (SET)

BENCH MARK: CITY OF WICHITA DISK ON THE NORTH RIGHT-OF-WAY OF K-96 HIGHWAY AND WEST RIGHT-OF-WAY OF HOOVER, 42.50' WEST OF THE CENTERLINE OF HOOVER AND 6.9' EAST SOUTHEAST OF POWER POLE ELEVATION = 1333.14 (NGVD29)

This plat of "HOOVER COMMERCIAL", an Addition to Sedgwick County, Kansas, has been submitted to and approved by the Wichita-Sedgwick County Metropolitan Area Planning Commission, Wichita, Kansas.

Dated this _____ day of _____, 2008.

Wichita-Sedgwick County Metropolitan Area Planning Commission

M.S. Mitchell
Chair

John L. Schlegel
Secretary

This plat approved and all dedications shown hereon accepted by the City Council of the City of Wichita, Kansas, this _____ day of _____, 2008.

At the Direction of the City Council

Carl Brewer
Mayor

Karen Sublett
City Clerk

This plat is approved and all dedications shown hereon, if any, accepted by the Board of County Commissioners of Sedgwick County, Kansas, this _____ day of _____, 2008.

David M. Unruh
Chairman

ATTEST:

Don Brace
County Clerk

Reviewed in accordance with K.S.A. 58-2005 on this _____ day of _____, 2008.

Tricia L. Robello, LS #1246
Deputy County Surveyor
Sedgwick County Kansas

Entered on transfer record this _____ day of _____, 2008.

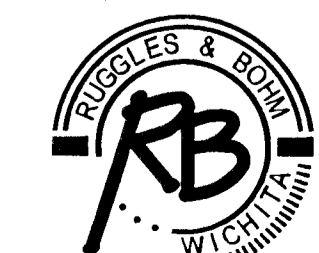
Don Brace
County Clerk

State of Kansas)
Sedgwick County) SS

This is to certify that this plat has been filed for record in the office of the Register of Deeds, this _____ day of _____, 2008, at _____ o'clock _____ M., and is duly recorded.

Bill Meek
Register of Deeds

Tonya Buckingham
Deputy



Ruggles & Bohm, P.A.
Engineering, Surveying, Land Planning

DWG FILE: SURVEY BASE
PROJECT NO. 3181P
DECEMBER 17, 2007

924 North Main (316) 264-8008
Wichita, Kansas 67203 (316) 264-4621 fax
www.rbkansas.com E-mail: info@rbkansas.com