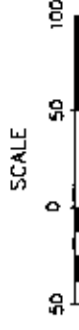
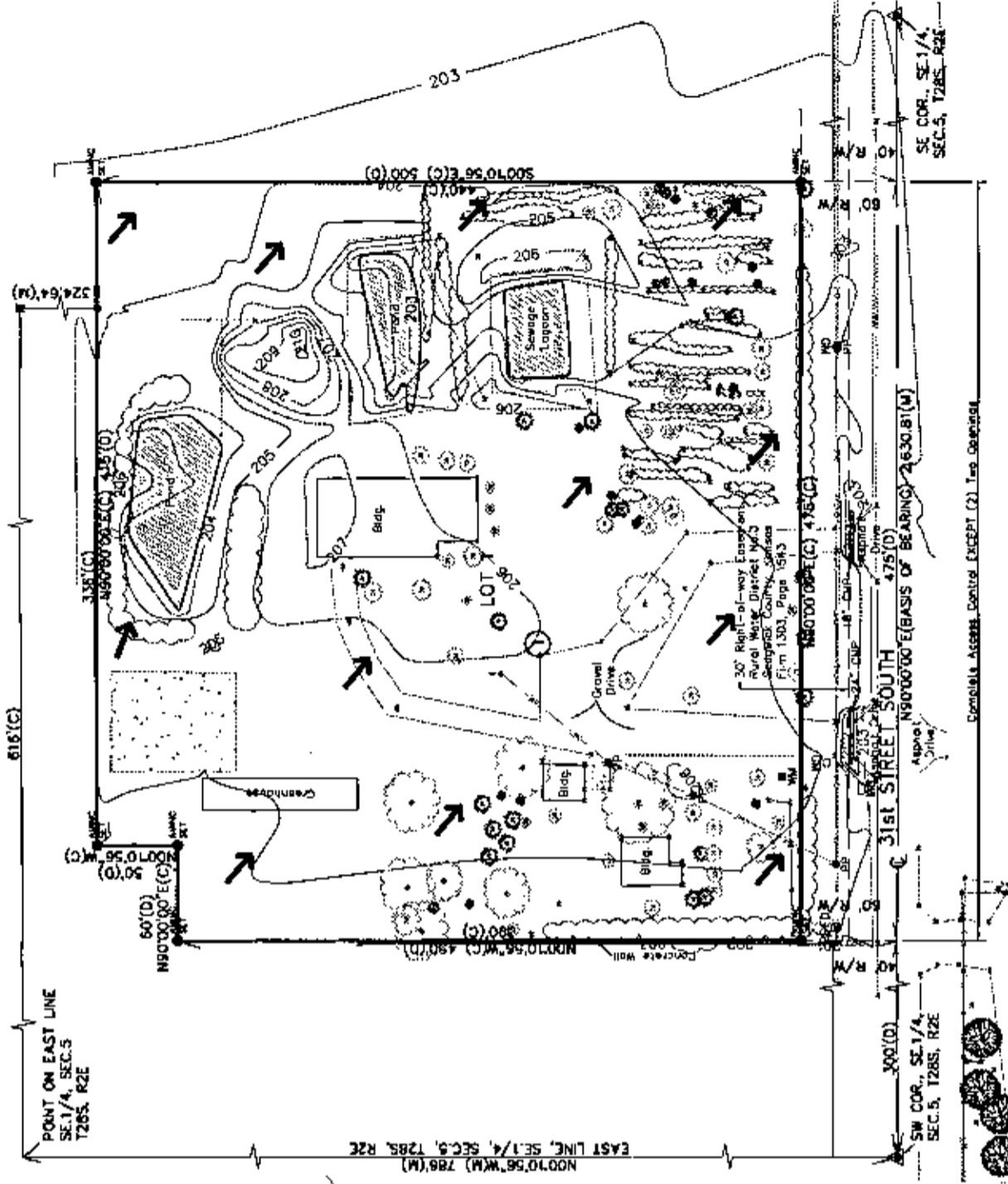


DRAINAGE PLAN HONG'S ADDITION SEDGWICK COUNTY, KANSAS



LEGEND

- 1/2" rebar (found)
- 1/2" rebar with REC cap (found)
- 5/8" rebar AMINC CLS p/da (not)
- (C) = Calculated
- (D) = Described
- (M) = Measured
- R/W = Right-of-Way
- △ = Section Corner
- = Center
- = Concrete
- Contour Elevation
- Fence
- Gas
- = Gas Meter
- = Light Pole
- = Manhole
- = Manhole
- Overhead Electric
- Power Pole
- Sanitary Sewer
- = Tree
- Underground Telephone
- Water
- Water Meter

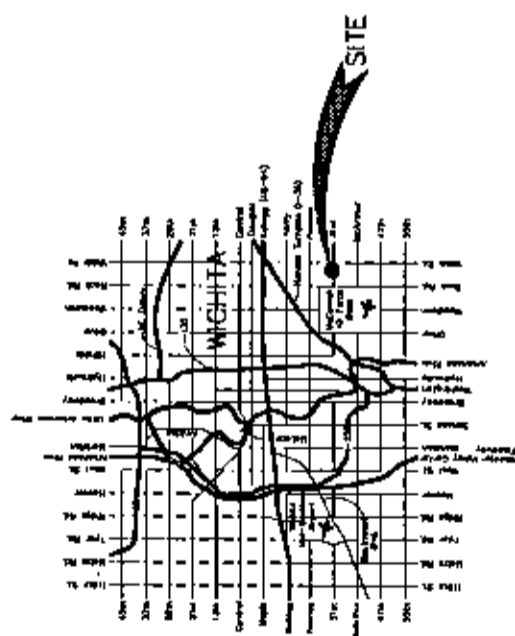


BENCHMARKS

West St. and 43rd St. South
 C.D. #1 Benchmark, NW corner of concrete slab at 17th Station
 20.78 ft. (16.30m) ESE of 1/4 section center point.
 50.70 ft. (15.50m) East of center line of West St.
 Elev: 94.69 City Datum (1782.09 MSL)

Area / Contour	Undeveloped		Developed	
	Area	Q ₁₀₀	Area	Q ₁₀₀
1	4.22	0.58	3.32	7.5
2	4.72	0.58	7.5	12.2
3	4.72	0.58	7.5	11.0
4	4.72	0.58	7.5	11.0

NOTES:
 1. Determination of Q₁₀₀ was made using the rational method.
 2. C.S. used with 100 yr frequency.
 3. C.S. used with 100 yr frequency.
 4. C.S. used with 100 yr frequency.



VICINITY MAP