

HOLY TEMPLE C.G.C. ADDITION TO WICHITA, SEDGWICK COUNTY KANSAS

STATE OF KANSAS }
COUNTY OF SEDGWICK }

STATE OF KANSAS }
COUNTY OF SEDGWICK }

BENCHMARK LAND SURVEY, A CORPORATION REGISTERED AND AUTHORIZED TO PRACTICE LAND SURVEYING IN THE STATE OF KANSAS, HAS BEEN COMMISSIONED BY THE CITY OF WICHITA, KANSAS, TO CONDUCT A BENCHMARK LAND SURVEY OF THE FOLLOWING PLAT AND TO PREPARE THE ACCOMPANYING PLAT AS A TRUE AND CORRECT EXHIBIT OF SUCH SURVEY UNLESS OTHERWISE SPECIFIED AS FOLLOWS:

BE IT REMEMBERED, THAT ON THIS _____ DAY OF _____, 1999, _____, COUNTY OF SEDGWICK, KANSAS, HAS BEEN COMMISSIONED BY THE CITY OF WICHITA, KANSAS, TO CONDUCT A BENCHMARK LAND SURVEY OF THE FOLLOWING PLAT AND TO PREPARE THE ACCOMPANYING PLAT AS A TRUE AND CORRECT EXHIBIT OF SUCH SURVEY UNLESS OTHERWISE SPECIFIED AS FOLLOWS:

LOTS 1 THROUGH 11, BLOCK A, AND LOTS 1 THROUGH 10, BLOCK C, MATLOCK MANOR ADDITION, WICHITA, SEDGWICK COUNTY, KANSAS, TOGETHER WITH THAT PART OF KANSAS AVENUE, ADJOINING BLOCKS A, B, AND C, MATLOCK MANOR ADDITION AND RUMSEY AVENUE.

MY WIFE, _____, I HAVE HERETOFORE SET MY HAND AND AFFIXED MY OFFICIAL SEAL THE DAY AND YEAR LAST ABOVE WRITTEN.

DATE SIGNED: _____ 1999

NOTARY PUBLIC: _____

JERRY L. DETMAR, L.S. #193
BENCHMARK LAND SURVEY

HIS PLAT OF "HOLY TEMPLE C.G.C. ADDITION", WICHITA, SEDGWICK COUNTY, KANSAS, HAS BEEN SUBMITTED AND APPROVED BY THE WICHITA-SEDGWICK COUNTY METROPOLITAN AREA PLANNING COMMISSION, WICHITA, KANSAS, DATED THIS _____ DAY OF _____, 1999.

STATE OF KANSAS }
COUNTY OF SEDGWICK }

STATE OF KANSAS }
COUNTY OF SEDGWICK }

KNOW ALL MEN BY THESE PRESENTS THAT HOLY TEMPLE CHURCH OF GOD IN CHRIST, OWNER OF THE LAND IN THE SURVEYORS CERTIFICATE BY ITS TRUSTEE, MR. JAMES LEWIS, HAS CAUSED TO BE PREPARED AND SUBMITTED TO THE CITY OF WICHITA, KANSAS, A PLAT AND LOTS, BLOCKS AND STREET FRONT OF THE SAME TO BE KNOWN AS "HOLY TEMPLE C.G.C. ADDITION", WICHITA, SEDGWICK COUNTY, KANSAS.

WICHITA-SEDGWICK COUNTY METROPOLITAN AREA PLANNING COMMISSION
RICHARD LOPEZ, CHAIRMAN
MURVIN S. KROUT, SECRETARY

ALL ABUTTER'S RIGHTS OF ACCESS TO OR FROM EISENHART STREET OVER AND ACROSS THE SOUTH LINE OF LOT 1, BLOCK 1, "HOLY TEMPLE C.G.C. ADDITION", AND TO OR FROM HYDRAULIC AVENUE OVER AND ACROSS THE WEST LINE OF LOT 1, BLOCK 1, "HOLY TEMPLE C.G.C. ADDITION" ARE HEREBY GRANTED TO THE CITY OF WICHITA, KANSAS, FOR THE PURPOSES OF THE CITY OF WICHITA, KANSAS, TO CONDUCT A BENCHMARK LAND SURVEY OF THE FOLLOWING PLAT AND TO PREPARE THE ACCOMPANYING PLAT AS A TRUE AND CORRECT EXHIBIT OF SUCH SURVEY UNLESS OTHERWISE SPECIFIED AS FOLLOWS:

THIS PLAT APPROVED AND ALL ORDINANCES, BY THE CITY OF WICHITA, KANSAS, HAS BEEN SUBMITTED AND APPROVED BY THE WICHITA-SEDGWICK COUNTY METROPOLITAN AREA PLANNING COMMISSION, WICHITA, KANSAS, DATED THIS _____ DAY OF _____, 1999.

ALL PREVIOUSLY DEDICATED EASEMENTS ARE HEREBY VACATED BY WRIT OF K.S.A. 12-212 (b).

BEFORE KNIGHT _____ MAYOR
PAT BURRITT _____ CITY CLERK

OWNER: HOLY TEMPLE CHURCH OF GOD IN CHRIST
WICHITA, KANSAS

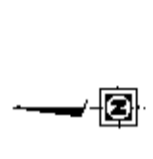
DATED ON TRANSFER RECORD THIS _____ DAY OF _____, 1999.
JAMES ALFARO _____ COUNTY CLERK

MR. JAMES LEWIS, TRUSTEE

STATE OF KANSAS }
COUNTY OF SEDGWICK }

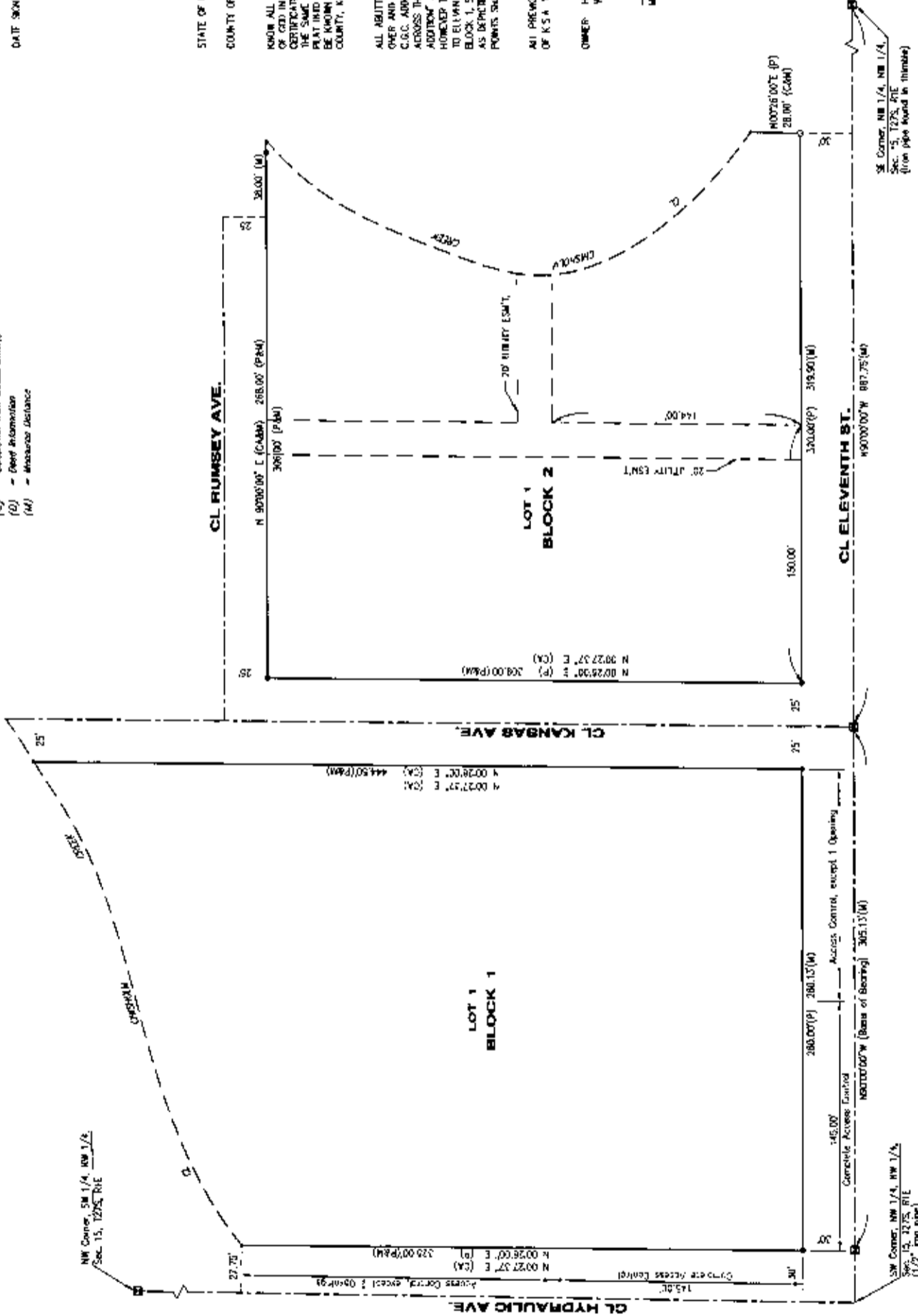
REGISTER OF DEEDS
LINDA INZIRE, DEPUTY

THIS IS TO CERTIFY THAT THIS INSTRUMENT WAS FILED FOR RECORD IN THE REGISTER OF DEEDS OFFICE, AT _____ A.M., ON THIS _____ DAY, _____, 1999.



LEGEND:

- (R) = Boundary Bound
- (d) = 1/4" Water with 10 Cap, "Armaturo 1787" Found
- (•) = 1/4" Water with 10 Cap, "S 5897" Set
- (P) = Pinned Reference
- (A) = Assumed Starting Place
- (C) = Observed from Measurements
- (O) = Direct Measurement
- (M) = Measured Distance



YOUNG & ASSOCIATES, P.A. LAND SURVEYORS
CIVIL AND ENVIRONMENTAL ENGINEERS