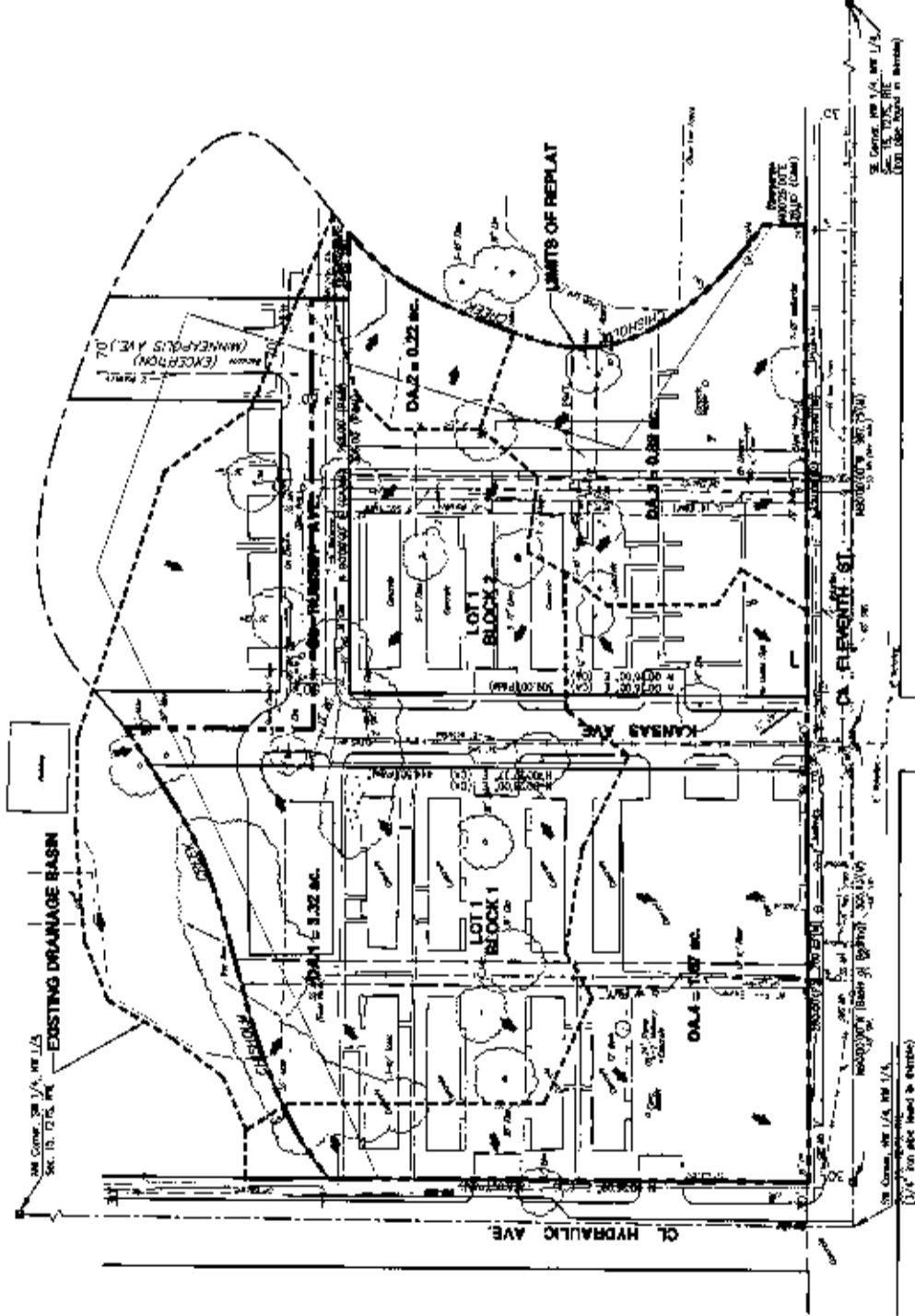
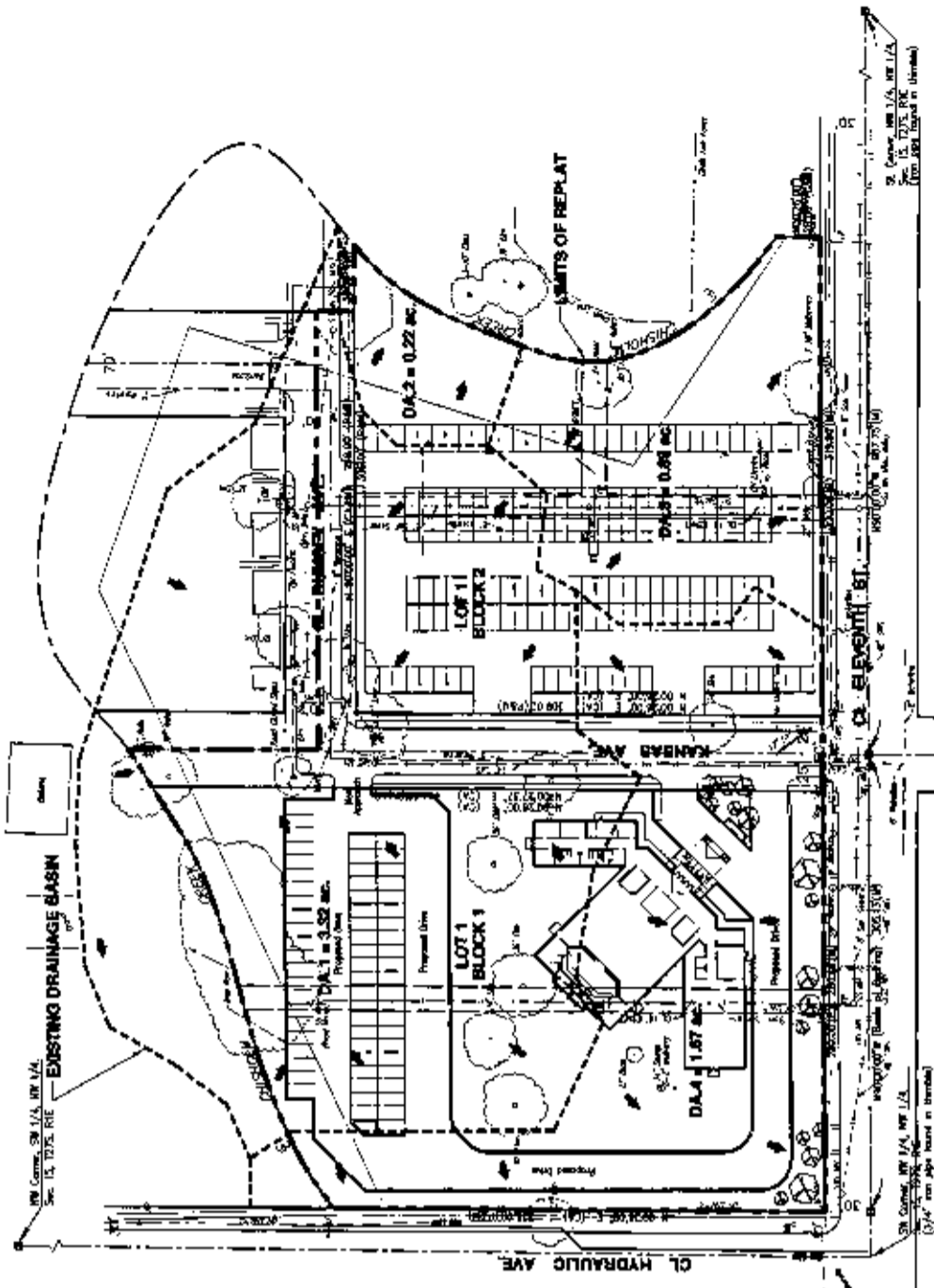
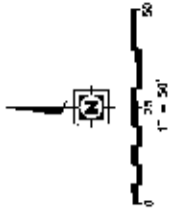


# HOLY TEMPLE C.G.C. ADDITION

## TO WICHITA, SEDGWICK COUNTY KANSAS

### DRAINAGE PLAN



#### LEGAL DESCRIPTION:

LOTS 1 THROUGH 15, BLOCK A, AND LOTS 1 THROUGH 10, BLOCK 15, MATLOCK MANOR AND BINA, WICHITA, SEDGWICK COUNTY, KANSAS, TOGETHER WITH THAT PART OF KANSAS AVENUE ADJOINING BLOCKS A, B, AND C, MATLOCK MANOR ADDITION AND BINESEY AVENUE.

#### BENCHMARK:

City of Wichita Data, at the adjacent corner of Kansas Ave. and Reynolds St. Hydraulic on traffic signal light base. Elev. = 115.791 City of Wichita datum. Elev. = 1302.69 M.S.L.

#### LEGEND:

- (S) = Three (3) inch, 11lb. and Kansas
- (C) = 24" Riser with 10" Cap, Advertising #7807 Found
- (\*) = 24" Riser with 10" Cap, 1.5' 9.99' 54'
- (P) = Pithead Distance
- (A) = Assumed Existing Basin
- (C) = Calculated from Measurements
- (M) = Measured
- (U) = Unmeasured
- (N) = Measured

POST-DEVELOPMENT CONDITIONS

PRE-DEVELOPMENT CONDITIONS