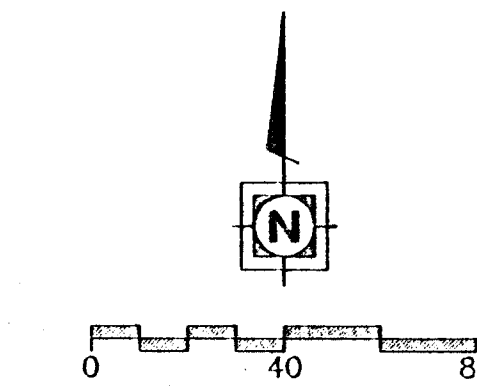
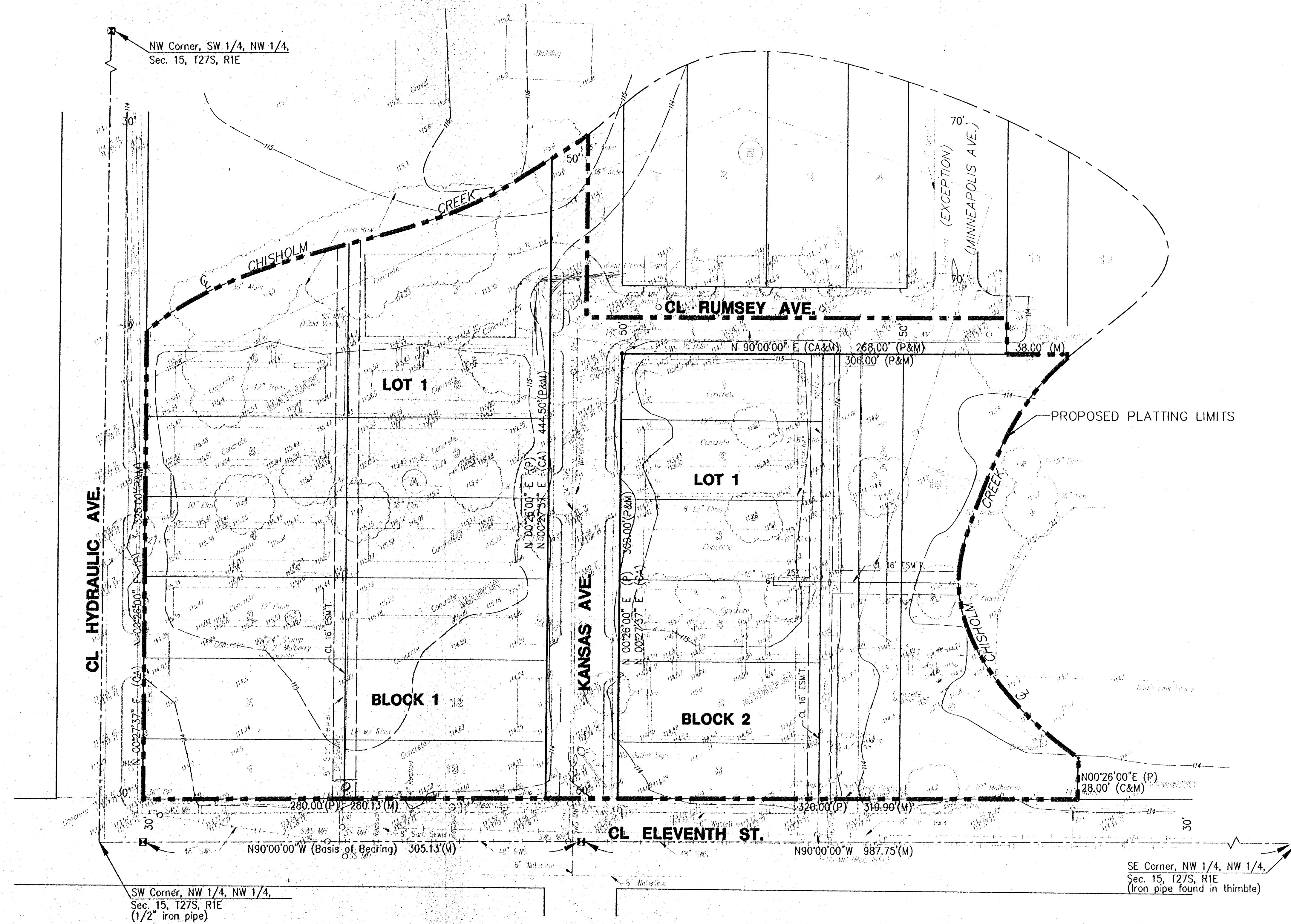


HOLY TEMPLE C.G.C. ADDITION TO WICHITA, SEDGWICK COUNTY KANSAS

PRELIMINARY PLAT



LEGEND

- ⊠ = Thimble found
- = #4 Rebar With ID Cap "Armstrong #780" Found
- = #4 Rebar With ID Cap "LS 950" Set
- (P) = Platted Distance
- (A) = Assumed Bearing Basis
- (C) = Calculated from Measurements
- (D) = Deed Information
- (M) = Measured Distance

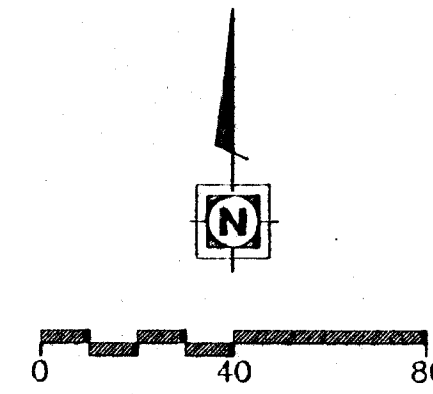
LEGAL DESCRIPTION:

LOTS 1 THROUGH 13, BLOCK A, AND LOTS 1 THROUGH 10, BLOCK C, MATLOCK MANOR ADDITION, WICHITA, SEDGWICK COUNTY, KANSAS, TOGETHER WITH THAT PART OF KANSAS AVENUE ADJOINING BLOCKS A, B, AND C, MATLOCK MANOR ADDITION AND RUMSEY AVENUE.

BENCHMARK

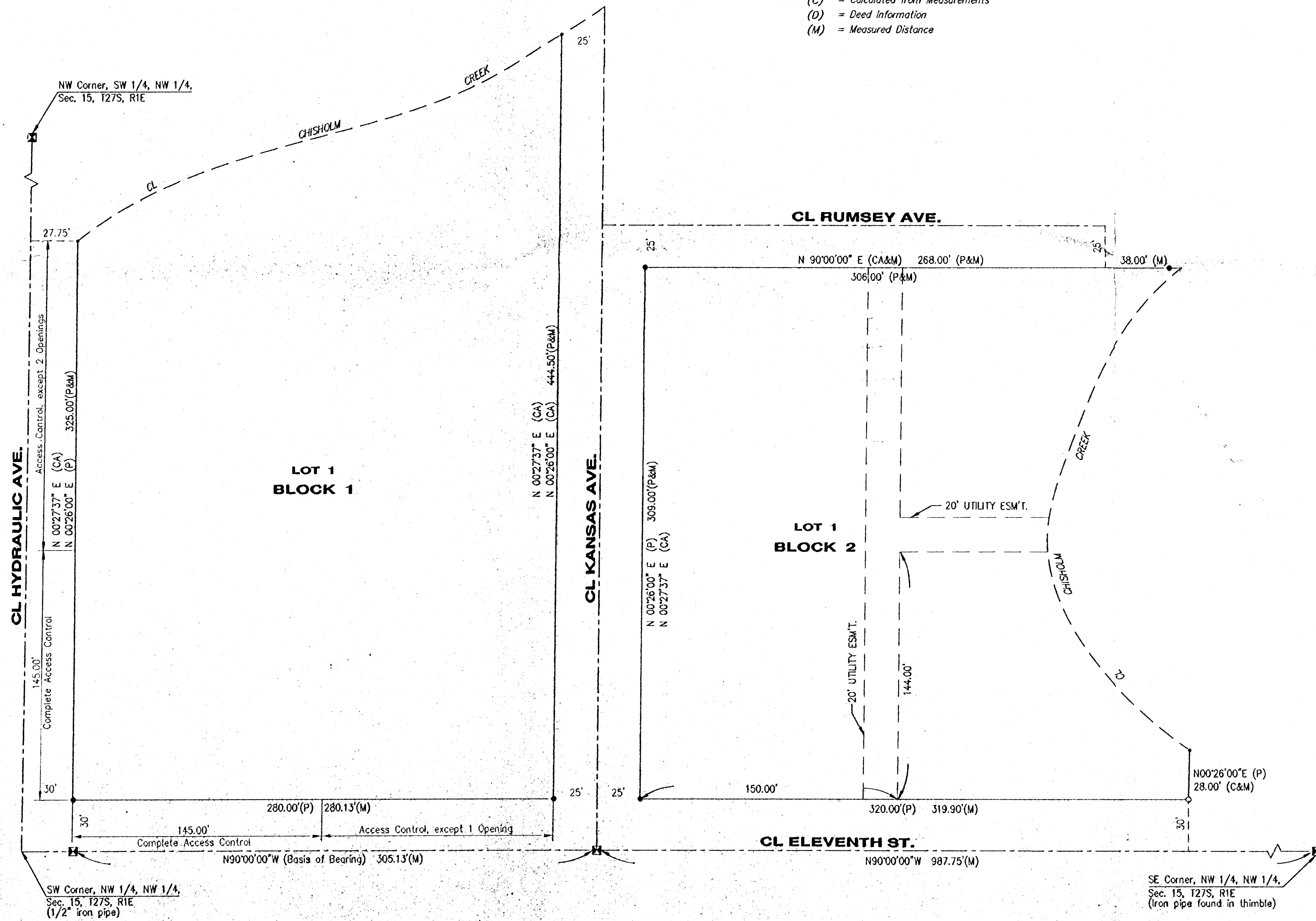
City of Wichita Disc, at northeast corner of the intersection of 13th Street North and Hydraulic, on traffic signal light base.
Elev. = 115.29 City of Wichita Datum
Elev. = 1302.69 M.S.L.

HOLY TEMPLE C.G.C. ADDITION TO WICHITA, SEDGWICK COUNTY KANSAS



LEGEND

- H = Thimble found
- o = #4 Rebar With ID Cap "Armstrong #180" Found
- = #4 Rebar With ID Cap "LS 950" Set
- (P) = Platted Distance
- (A) = Assumed Bearing Basis
- (C) = Calculated from Measurements
- (D) = Deed Information
- (M) = Measured Distance



STATE OF KANSAS)
)ss
COUNTY OF SEDGWICK)

BENCHMARK LAND SURVEY, A CORPORATION REGISTERED AND AUTHORIZED TO PRACTICE LAND SURVEYING IN THE STATE OF KANSAS, HEREBY CERTIFIES THAT IT HAS SURVEYED THE FOLLOWING TRACT OF LAND, AND THE ACCOMPANYING PLAT IS A TRUE AND CORRECT EXHIBIT OF SUCH SURVEY DESCRIBED AS:

LOTS 1 THROUGH 13, BLOCK A, AND LOTS 1 THROUGH 10, BLOCK C, MATLOCK MANOR ADDITION, WICHITA, SEDGWICK COUNTY, KANSAS, TOGETHER WITH THAT PART OF KANSAS AVENUE ADJOINING BLOCKS A, B, AND C, MATLOCK MANOR ADDITION AND RUMSEY AVENUE.

DATE SIGNED: _____, 1999

JEFFERY L. DETTMAN, L.S. #950
BENCHMARK LAND SURVEY

STATE OF KANSAS)
)ss
COUNTY OF SEDGWICK)

KNOW ALL MEN BY THESE PRESENTS THAT HOLY TEMPLE CHURCH OF GOD IN CHRIST, OWNER OF THE LAND IN THE SURVEYOR'S CERTIFICATE BY ITS TRUSTEE, MR. JAMES LEWIS, HAS CAUSED THE SAME TO BE SURVEYED AND SUBDIVIDED ON THE ACCOMPANYING PLAT INTO LOTS, BLOCKS, AND STREET RIGHT OF WAY, THE SAME TO BE KNOWN AS "HOLY TEMPLE C.G.C. ADDITION", WICHITA, SEDGWICK COUNTY, KANSAS.

ALL ABUTTER'S RIGHTS OF ACCESS TO OR FROM ELEVENTH STREET OVER AND ACROSS THE SOUTH LINE OF LOT 1, BLOCK 1, "HOLY TEMPLE C.G.C. ADDITION", AND TO OR FROM HYDRAULIC AVENUE OVER AND ACROSS THE WEST LINE OF LOT 1, BLOCK 1, "HOLY TEMPLE C.G.C. ADDITION" ARE HEREBY GRANTED TO THE CITY OF WICHITA; PROVIDED HOWEVER THAT LOT 1, BLOCK 1, SHALL HAVE ONE POINT OF ACCESS TO ELEVENTH STREET AS DEPICTED ON THE PLAT, AND THAT LOT 1, BLOCK 1, SHALL HAVE TWO POINTS OF ACCESS TO HYDRAULIC AVENUE AS DEPICTED ON THE PLAT. THE LOCATION OF ALL PERMITTED ACCESS POINTS SHALL BE APPROVED BY THE CITY ENGINEER.

ALL PREVIOUSLY DEDICATED EASEMENTS ARE HEREBY VACATED BY VIRTUE OF K.S.A. 12-512 (b).

OWNER: HOLY TEMPLE CHURCH OF GOD IN CHRIST
WICHITA, KANSAS

MR. JAMES LEWIS, TRUSTEE

STATE OF KANSAS)
)ss
COUNTY OF SEDGWICK)

BE IT REMEMBERED, THAT ON THIS _____ DAY OF _____, 1999, BEFORE ME THE UNDERSIGNED, A NOTARY PUBLIC IN AND FOR THE COUNTY AND STATE AFORESAID, CAME JAMES LEWIS, TRUSTEE, PERSONALLY KNOWN TO ME TO BE THE SAME PERSON WHO EXECUTED THE FOREGOING INSTRUMENT OF WRITING AND DULY ACKNOWLEDGED THE EXECUTION OF

IN WITNESS WHEREOF, I HAVE HEREUNTO SET MY HAND AND AFFIXED MY OFFICIAL SEAL, THE DAY AND YEAR LAST ABOVE WRITTEN.

NOTARY PUBLIC, _____

MY APPOINTMENT EXPIRES: _____

THIS PLAT OF "HOLY TEMPLE C.G.C. ADDITION", WICHITA, SEDGWICK COUNTY, KANSAS, HAS BEEN SUBMITTED AND APPROVED BY THE WICHITA-SEDGWICK COUNTY METROPOLITAN AREA PLANNING COMMISSION, WICHITA, KANSAS, DATED THIS _____ DAY OF _____, 1999.

WICHITA-SEDGWICK COUNTY
METROPOLITAN AREA PLANNING COMMISSION

RICHARD LOPEZ, CHAIRMAN

MARVIN S. KROUT, SECRETARY

STATE OF KANSAS)
)ss
CITY OF WICHITA)

THIS PLAT APPROVED AND ALL DEDICATIONS SHOWN HEREON, IF ANY ARE HEREBY ACCEPTED BY THE CITY COUNCIL OF THE CITY OF WICHITA KANSAS THIS _____ DAY OF _____, 1999.

BOB KNIGHT, MAYOR

PAT BURNETT, CITY CLERK

ENTERED ON TRANSFER RECORD THIS _____ DAY OF _____, 1999,
JAMES ALFORD, COUNTY CLERK

STATE OF KANSAS)
)ss
COUNTY OF SEDGWICK)

THIS IS TO CERTIFY THAT THIS INSTRUMENT WAS FILED FOR RECORD IN THE REGISTER OF DEEDS OFFICE, AT _____ A.M., ON THIS _____ DAY, _____, 1999.

BILL MEEK, REGISTER OF DEEDS

LINDA KIZZIRE, DEPUTY