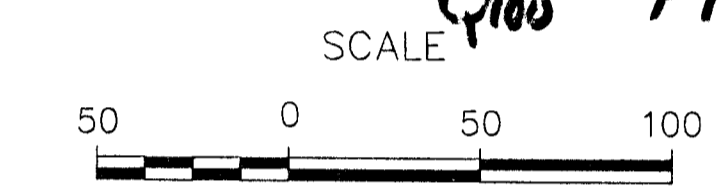


HOLLAND ADDITION WICHITA SEDGWICK COUNTY KANSAS

DRAINAGE PLAN

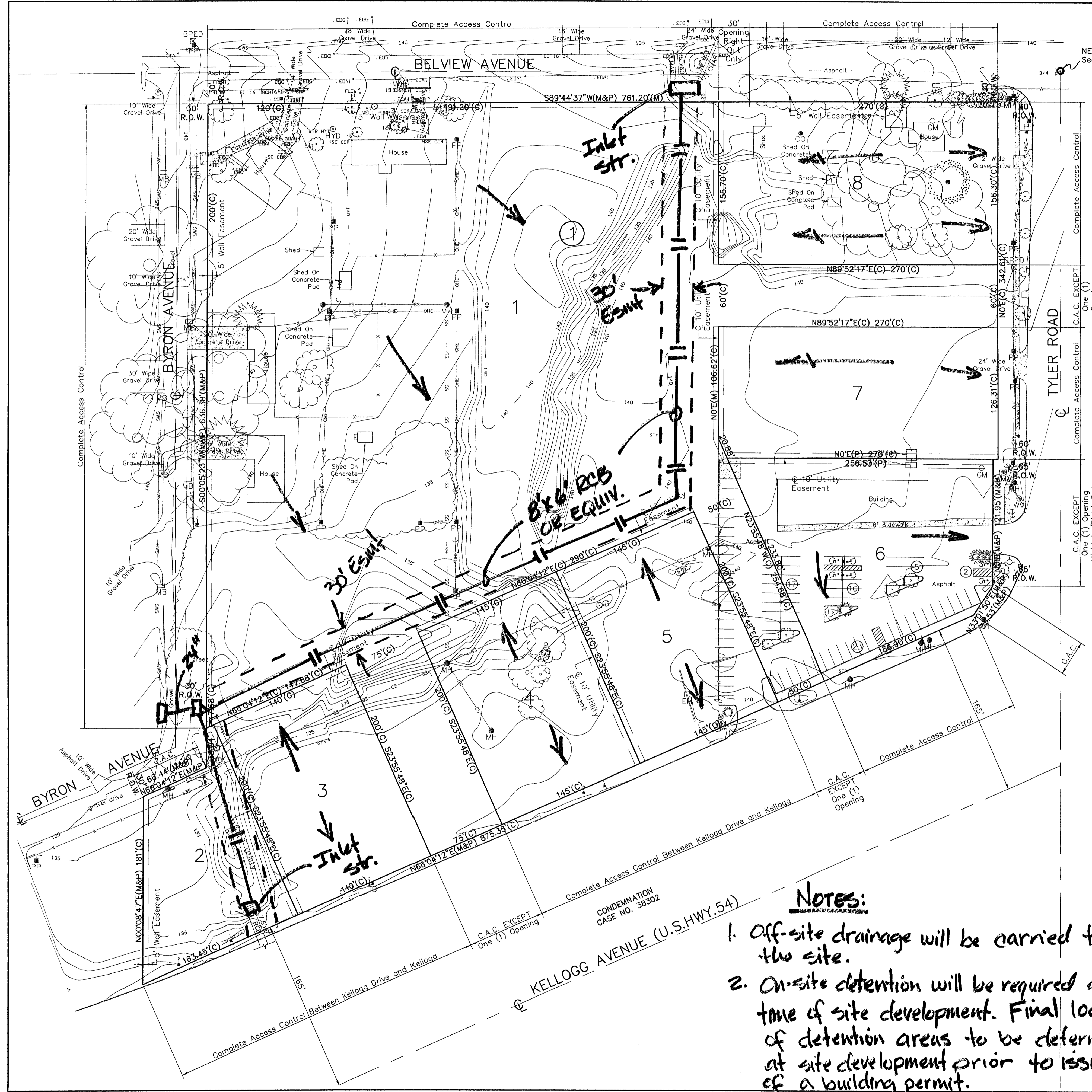
$A = 12.00 \pm$
 $C_u = 0.5$
 $C_D = 0.9$
 $i_s = 4.56 \text{ %/hr}$
 $i_{100} = 7.37 \text{ %/hr}$

UNDEVELOPED
 $Q_p = 274$
 $Q_{100} = 443$
 DEVELOPED
 $Q_p = 493$
 $Q_{100} = 796$



LEGEND

- = 3/4" Iron Pipe (found)
- = 5/8" Rebar AMINC CLS #104 (set)
- (C) = Calculated
- (M) = Measured
- R.O.W. = Right-of-Way
- BPED = Bell Pedestal
- = Cedar
- = Centerline
- = Cleanout
- = Concrete
- = Contour Elevation, Existing
- = Electric Meter
- = Fence
- = Fire Hydrant
- = Gas
- = Gas Meter
- = Gas Valve
- = Guy Anchor
- = Handicap Parking
- = Irrigation Control Valve
- = Light Pole
- = Mailbox
- = Manhole
- = Overhead Electric
- = Parking Stall
- = Power Pole
- = Sanitary Sewer
- = Sign
- = Traffic Control Box
- = Traffic Signal
- = Tree
- = Underground Telephone
- = Water
- = Water Meter
- = Water Valve



- NOTES:**
- Off-site drainage will be carried through the site.
 - On-site detention will be required at the time of site development. Final location of detention areas to be determined at site development prior to issuance of a building permit.

BENCHMARK
 West St. and 47th St. South
 C.O.W. Benchmark. NE corner of intersection.
 Elev. 1282.09 MSL, 94.69 City Datum

AM CONSULTING, Inc.
ENGINEERING SERVICES
 142 N. Emporia Wichita, KS 67202
 316/265-2870 fax: 316/265-2839

E:\projects\000\00033\00033-Plat-2012.dwg Mon Mar 29 07:56:48 2004 Aaron E. - aaron@amconsulting.com