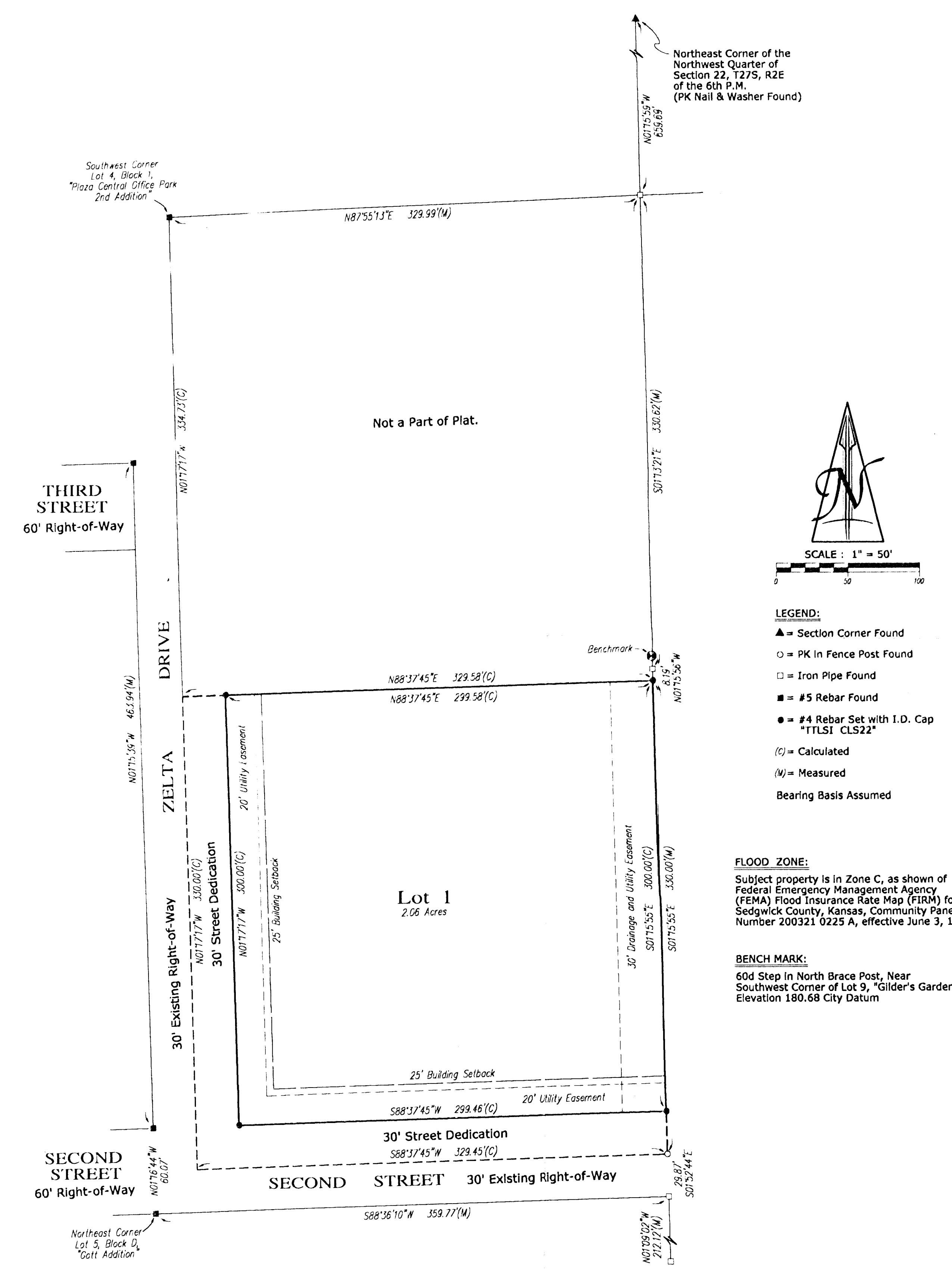


FINAL PLAT OF
"HINDU TEMPLE ADDITION"
 WICHITA, SEDGWICK COUNTY, KANSAS
 IN THE NW 1/4 OF SECTION 22, T27S, R2E OF THE 6TH P.M.



Northeast Corner of the Northwest Quarter of Section 22, T27S, R2E of the 6th P.M. (PK Nail & Washer Found)

Southwest Corner Lot 4, Block 1, "Pizza Central Office Park 2nd Addition"

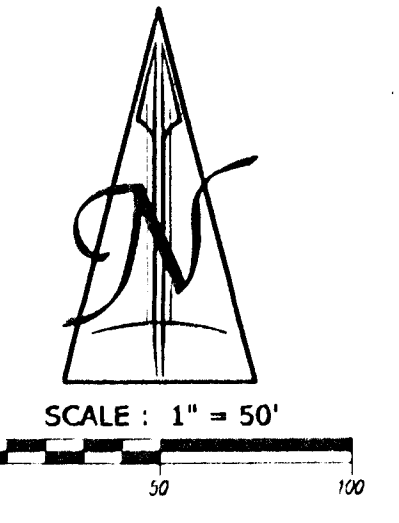
THIRD STREET
60' Right-of-Way

ZETA DRIVE

SECOND STREET
60' Right-of-Way

Not a Part of Plat.

Lot 1
2.06 Acres



- LEGEND:**
- ▲ = Section Corner Found
 - = PK in Fence Post Found
 - = Iron Pipe Found
 - = #5 Rebar Found
 - = #4 Rebar Set with I.D. Cap "TILSI CLS22"
 - (C) = Calculated
 - (M) = Measured
 - Bearing Basis Assumed

FLOOD ZONE:
 Subject property is in Zone C, as shown of Federal Emergency Management Agency (FEMA) Flood Insurance Rate Map (FIRM) for Sedgwick County, Kansas, Community Panel Number 200321 0225 A, effective June 3, 1986.

BENCH MARK:
 60d Step in North Brace Post, Near Southwest Corner of Lot 9, "Gilder's Gardens" Elevation 180.68 City Datum

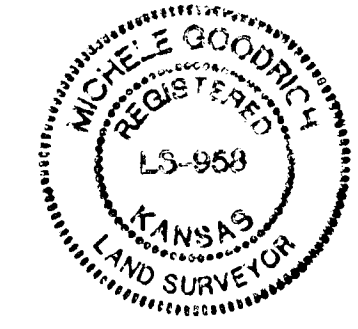
State of Kansas)
 Sedgwick County) ss

Terra Tech Land Surveying, Inc., a corporation registered and authorized to practice Land Surveying in the State of Kansas, hereby certifies that it has surveyed and platted "HINDU TEMPLE ADDITION", Wichita, Sedgwick County, Kansas, and the accompanying plat is a true and correct exhibit of such survey described as:

The South 330 feet of the East 10 acres of the North Half of the Northwest Quarter of Section 22, Township 27 South, Range 2 East of the Sixth Principal Meridian, Sedgwick County, Kansas.

TERRA TECH LAND SURVEYING, INC.

Michelle Goodrich LS #958 Date June 5, 2001



Reviewed in accordance with K.S.A. 58-2005 on this _____ day of _____, 2001.

Tricia L. Robello, LS#1246
 Deputy County Surveyor
 Sedgwick County, Kansas

This plat of "HINDU TEMPLE ADDITION", Wichita, Sedgwick County, Kansas, has been submitted to and approved by the Wichita-Sedgwick County Metropolitan Area Planning Commission, Wichita, Kansas.

Dated this _____ day of _____, 2001.

WICHITA-SEDGWICK COUNTY
 METROPOLITAN AREA PLANNING COMMISSION

J.D. Michaels, Acting Chair
 Marvin S. Krout, Secretary

This plat approved and all dedications shown hereon are accepted by the City Council of the City of Wichita, Kansas, this _____ day of _____, 2001.

At the Direction of the City Council
 Chris Cherches, City Manager
 Pat Burnett, City Clerk

Know all men by these presents that the undersigned, owners of the land described in the Surveyor's Certificate, have caused the same to be surveyed and platted into a Lot and Streets to be known as "HINDU TEMPLE ADDITION", Wichita, Sedgwick County, Kansas. The utility easements as shown hereon is hereby granted for the construction and maintenance of all public utilities. The drainage easement is hereby granted for the conveyance of stormwater. The Streets are hereby granted to and for the use of the public. A drainage plan has been developed for this plat and all drainage easements, rights-of-way, or reserves shall remain at established grades or as modified with the approval of the applicable City or County Engineer, and unobstructed to allow for the conveyance of stormwater.

HINDU TEMPLE OF GREATER WICHITA, INC.

Raghunath Reddi, Chairman of the Board of Trustees

State of Kansas)
 Sedgwick County) ss
 This instrument was acknowledged before me this _____ day of _____, 2001, by Raghunath Reddi, Chairman of the Board of Trustees, of Hindu Temple of Greater Wichita, Inc., a Kansas not-for-profit corporation.

_____, Notary Public

My Commission Expires: _____

Entered on transfer record this _____ day of _____, 2001.

Don Brace, County Clerk

State of Kansas)
 Sedgwick County) ss
 This is to certify that this instrument was filed for record in the Register of Deeds Office, at _____ o'clock _____ M., on the _____ day of _____, 2001.

Bill Meek, Register of Deeds
 Linda Kizaire, Deputy