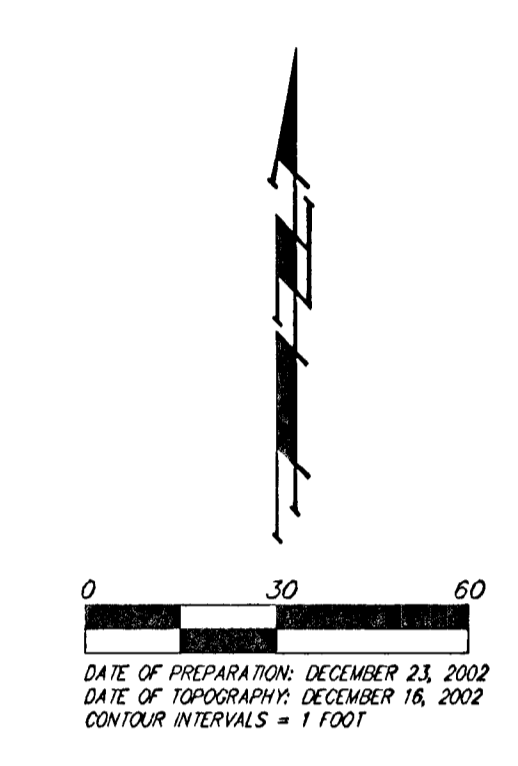
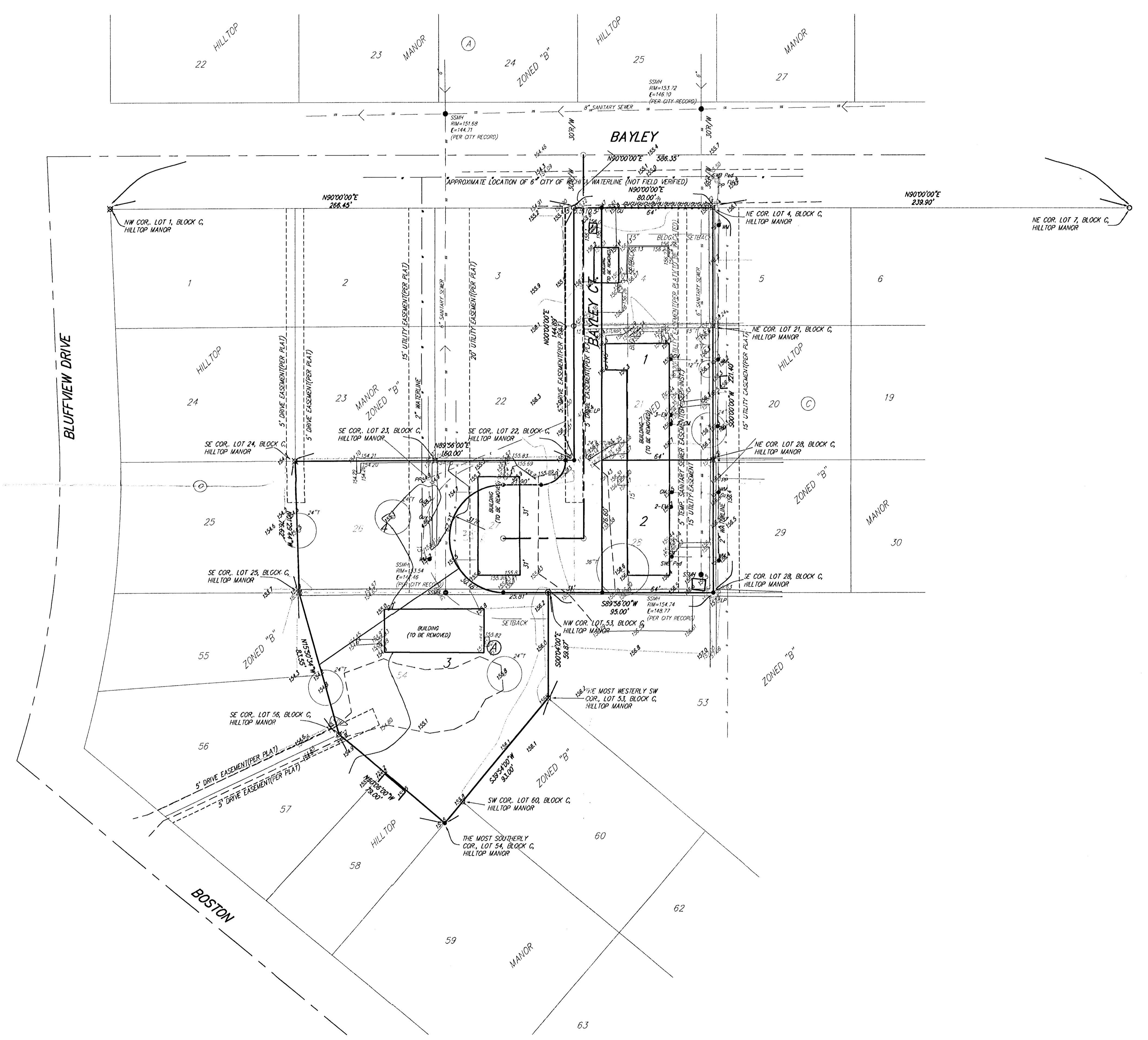


PRELIMINARY PLAT  
**HILLTOP MANOR 3RD ADDITION**  
 WICHITA, SEDGWICK COUNTY, KANSAS



**OWNER:**  
 Memorial Housing Rehabilitation Services  
 2145 N. Tepe  
 Wichita, KS 67214  
 316-342-4848

**LEGAL DESCRIPTION:**  
 A replat of Lots 4, 21, 28, 27, 26, and 54, Block C, Hilltop Manor, A Replat of Parts of Hilltop Manor and Hilltop Manor 2nd, Being a Subdivision in Section 26, Township 27 South, Range 1 East of the 6th P.M., Sedgwick County, Kansas.

**BENCHMARKS:**  
 Red Road spike south side of power pole  
 15' north of northwest cor. Lot 4, Block C.  
 3' east of northwest cor. Lot 4, Block C.  
 Elev. = 156.74 City Datum (1344.14 NGVD29)

**FM** = Fire Hydrant  
**GM** = Gas Meter  
**GP** = Guard Post (Bollard)  
**AN** = Guy Anchor  
**LP** = Light Pole  
**EM** = Electric Meter  
**YL** = Yard Light  
**PP** = Power Pole  
**SSM** = Sanitary Sewer Manhole  
**SWP** = Southwestern Bell Pedestal  
**T** = Tree  
**WM** = Water Meter

● = #4 REBAR W/ "DAUGHMAN" CAP (SET)  
 ⊙ = #4 REBAR (FOUND)  
 ⊗ = 3/4" IRON (FOUND)  
 ⊖ = 1/2" IRON (FOUND)  
 ⊕ = CROSS (FOUND)  
 (M) = MEASURED  
 (D) = DESCRIBED  
 (P) = PLATTED  
 (C) = CALCULATED

