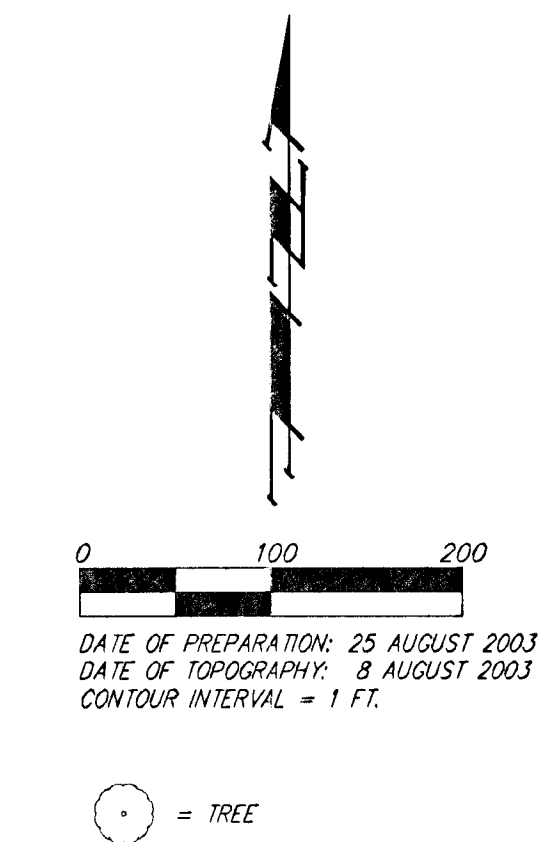
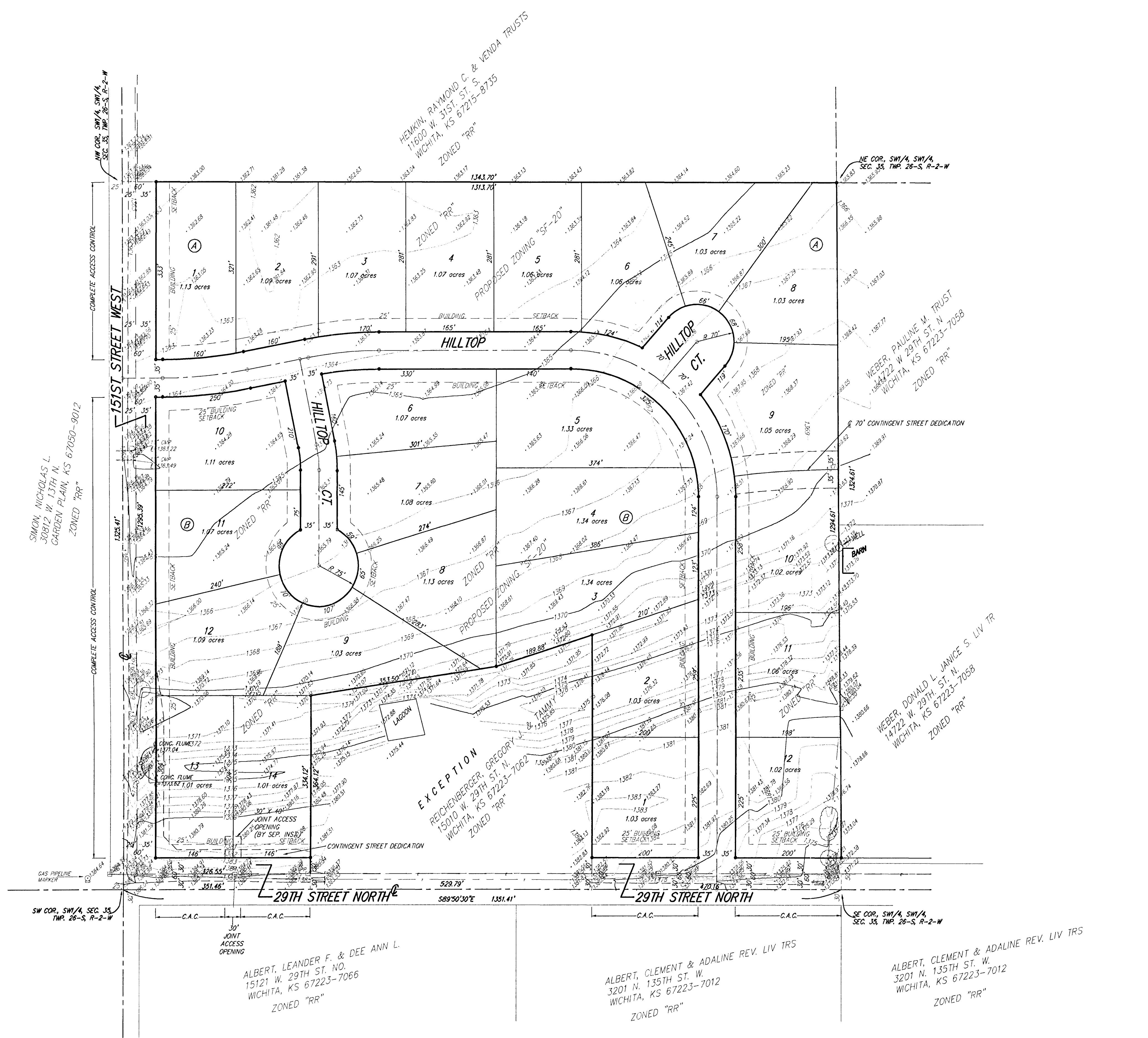


PRELIMINARY PLAT
HILLTOP ACRES ESTATES
 SEDGWICK COUNTY, KANSAS



CONTRACT PURCHASER:
 Doug Eck
 Eck Real Estate
 9915 W. 21st St. N.
 Suite A
 Wichita, KS 67212
 316-942-7402

LEGAL DESCRIPTION:
 The SW 1/4, SW 1/4, Sec. 35, Township 26 South, Range 2 West EXCEPT beginning 351.56' East of the SW Corner, thence North 364.16', thence Northeast a distance of 353.43', thence in a Northeasterly direction a distance of 190' ±, thence South a distance of 478.22' to the South Line thence West a distance of 529.72' to the point of beginning EXCEPT for roads of right-of-way.

BENCHMARK:
 Top of Steel T-Post 3" above ground. 26' N. and 29' W. of Section Corner.
 U.S.G.S. Elev. = 1352.30

