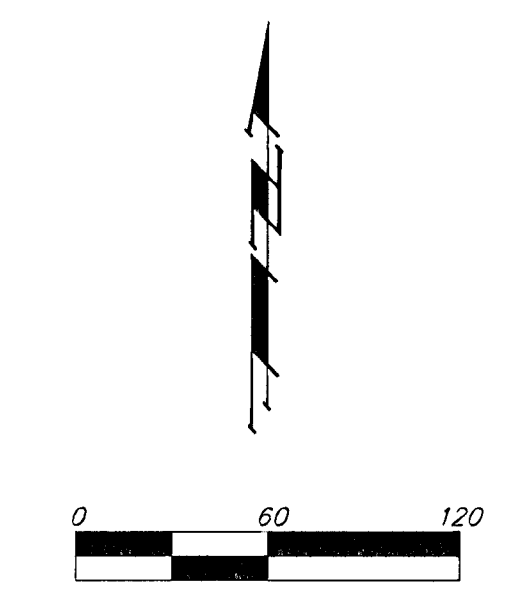
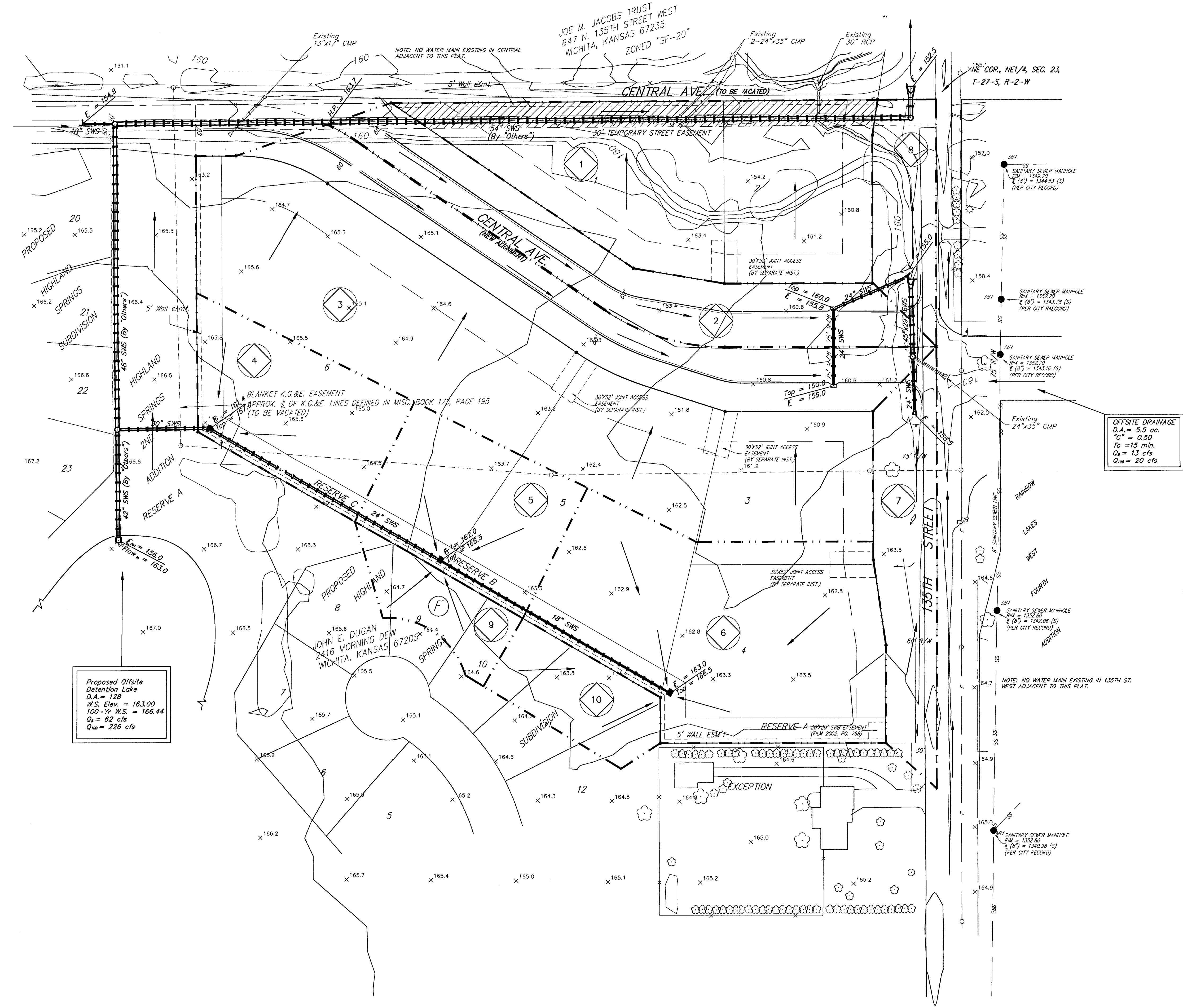


DRAINAGE PLAN

HIGHLAND SPRINGS COMMERCIAL ADDITION

WICHITA, SEDGWICK COUNTY, KANSAS

Offsite Drainage
D.A. = 2.5 ac.
C_s = .50
C₁₀₀ = 5.7 cfs
T_c = 9.2 min.



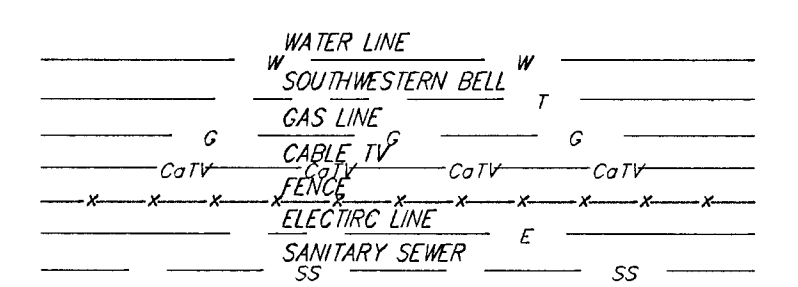
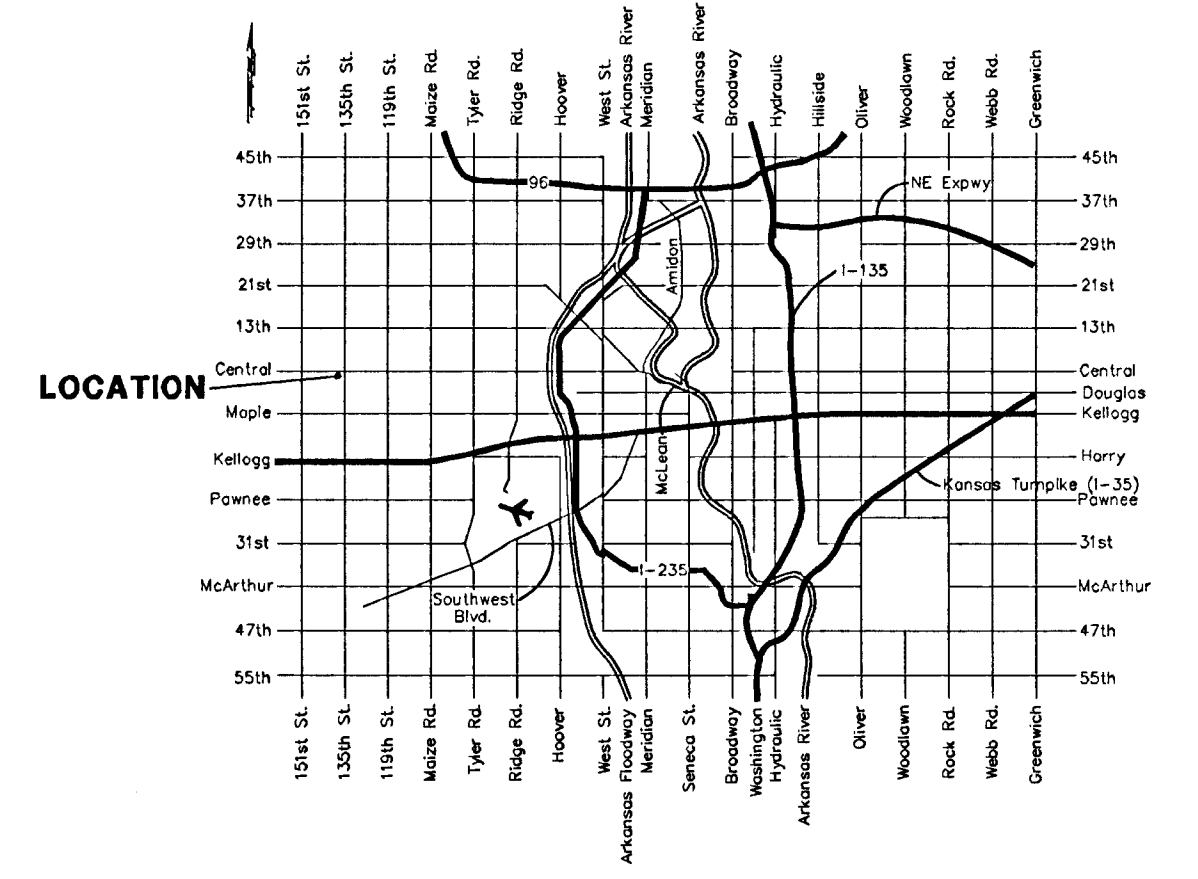
Benchmark:
135th St. W. & Central
City of Wichita benchmark disc - NE cor. intersection,
32.6' N. & 24.5' E. OF C both, 39.5' NE of iron at sec. cor.
Elev = 159.50 city datum
(1348.90 M.S.L.)

OWNER:
Mr. John E. Dugan
2416 Morning Dew
Wichita, Kansas 67205
PH: (316) 721-2416

LEGAL DESCRIPTION:
Beginning at the NE corner of the NE 1/4 of Sec. 23, Twp. 27-S, R-2-W of the 6th P.M., Sedgwick County, Kansas; thence S00°06'48"E along the east line of said NE 1/4, 738 feet; thence S00°06'48"E along the east line of said NE 1/4, 758 feet; thence S89°53'12"W, 326.70 feet; thence N00°06'48"W, 54.41 feet; thence N80°06'48"W, 629.47 feet; thence N00°23'02"W, 384.22 feet to a point on the north line of said NE 1/4; thence N89°34'58"E along the north line of said NE 1/4, 873.89 feet to the point of beginning.

OFFSITE DRAINAGE
D.A. = 5.3 ac.
C_s = 0.50
T_c = 15 min.
Q_s = 13 cfs
Q₁₀₀ = 20 cfs

Drainage Area	Area (acres)	C _s	C ₁₀₀	T _c (min.)	I _s (in/hr)	I ₁₀₀ (in/hr)	Q _s (cfs)	Q ₁₀₀ (cfs)
1	2.02	0.90	0.90	15	4.56	7.37	8.3	13
2	1.09	0.90	0.90	15	4.56	7.37	4.5	7.2
3	4.34	0.90	0.90	15	4.56	7.37	18	29
4	0.86	0.90	0.90	15	4.56	7.37	3.5	5.7
5	0.86	0.90	0.90	15	4.56	7.37	3.5	5.7
6	2.01	0.90	0.90	15	4.56	7.37	8.2	13
7	0.72	0.90	0.90	15	4.56	7.37	3.0	4.8
8	0.43	0.90	0.90	15	4.56	7.37	1.8	2.9
9	0.33	0.54	0.54	15	4.56	7.37	0.8	1.3
10	0.44	0.54	0.54	15	4.56	7.37	1.1	1.8



06 MARCH 2000