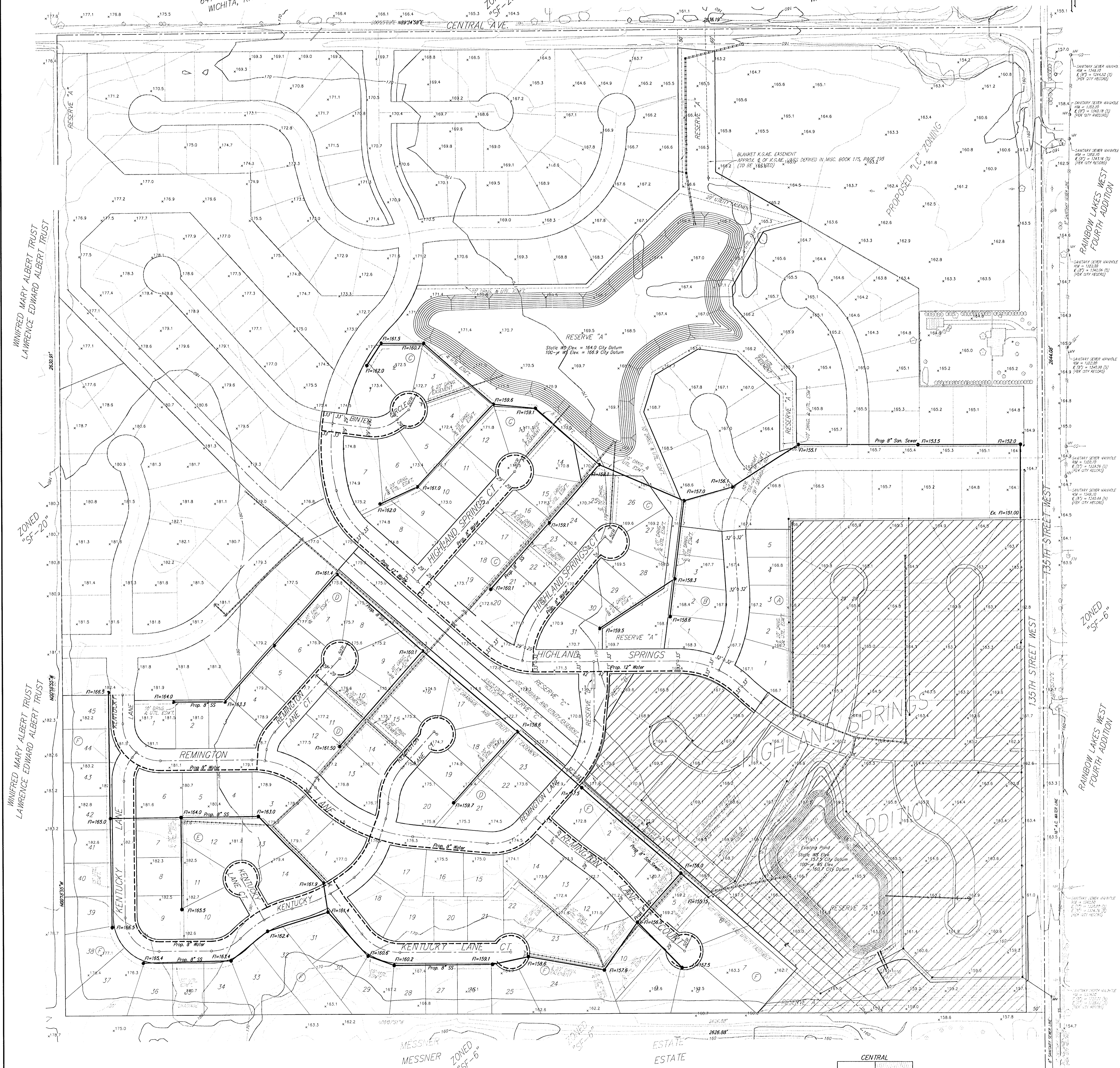
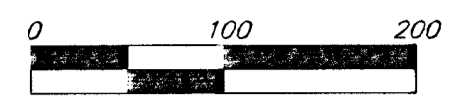


UTILITY PLAN HIGHLAND SPRINGS 2ND ADDITION

WICHITA, SEDGWICK COUNTY, KANSAS

JOE M. JACOBS TRUST
647 N. 135TH STREET WEST
WICHITA, KANSAS 67235

JOE M. JACOBS TRUST
647 N. 135TH STREET WEST
WICHITA, KANSAS 67235



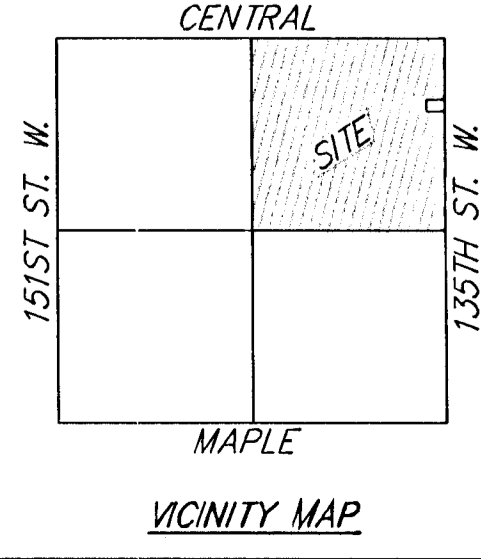
WINIFRED MARY ALBERT TRUST
LAWRENCE EDWARD ALBERT TRUST

WINIFRED MARY ALBERT TRUST
LAWRENCE EDWARD ALBERT TRUST

RAINBOW LAKES WEST
FOURTH ADDITION

RAINBOW LAKES WEST
FOURTH ADDITION

— Prop. Sanitary Sewer
- - - Prop. Water Mains



BAUGHMAN COMPANY P.A.
ENGINEERING SURVEYING & PLANNING
318-322-3311 • 319-344-3322 • WICHITA, KANSAS 67202

April 23, 1997