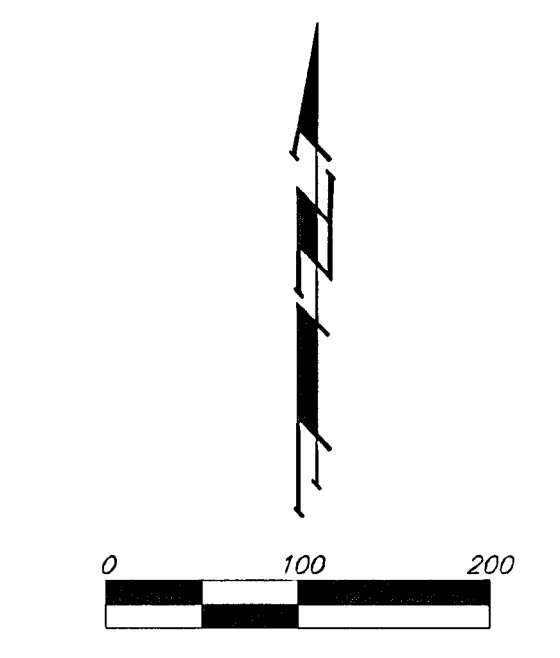
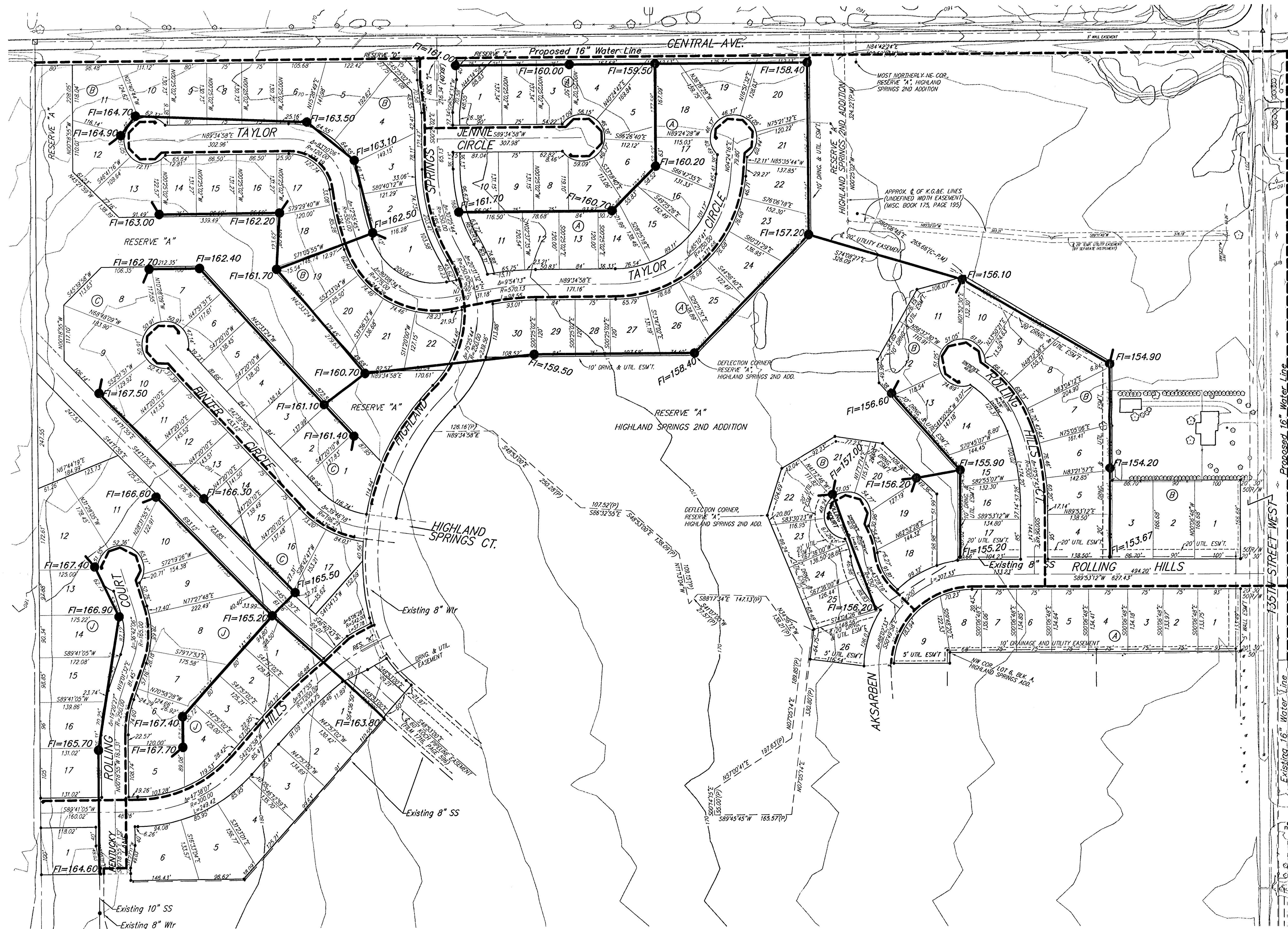


UTILITY PLAN

HIGHLAND SPRINGS 3RD ADDITION

WICHITA, SEDGWICK COUNTY, KANSAS



BENCHMARK:
 135TH ST. W. & CENTRAL
 CITY OF WICHITA BENCHMARK DISC - NE COR. INTERSECTION
 32.6' N. & 24.5' E. OF C. BOTH, 39.5' NE OF IRON AT SEC. COR.
 ELEV = 159.50 CITY DATUM
 (1348.90 M.S.L.)

LEGEND

	Proposed Water Line (8" Unless Noted Otherwise)
	Proposed Sanitary Sewer Line (8" Unless Noted Otherwise)
	Proposed Sanitary Sewer Manhole