

HIGH POINT WEST ADDITION URBAN DEVELOPMENT CONCEPT WICHITA, SEDGWICK COUNTY, KANSAS

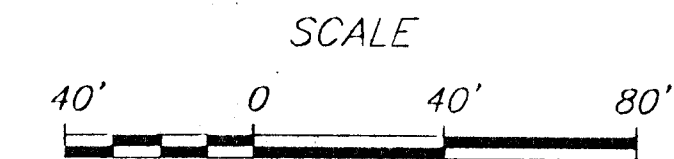
NW CORNER NW 1/4
SEC. 26, T27S, R2W

NE CORNER NW 1/4
SEC. 26, T27S, R2W

MAPLE STREET

N 90°00'00" W (Assumed) 2617.61 (M)

David & Genita Niedens
9414 W. Central
Wichita, KS 67212

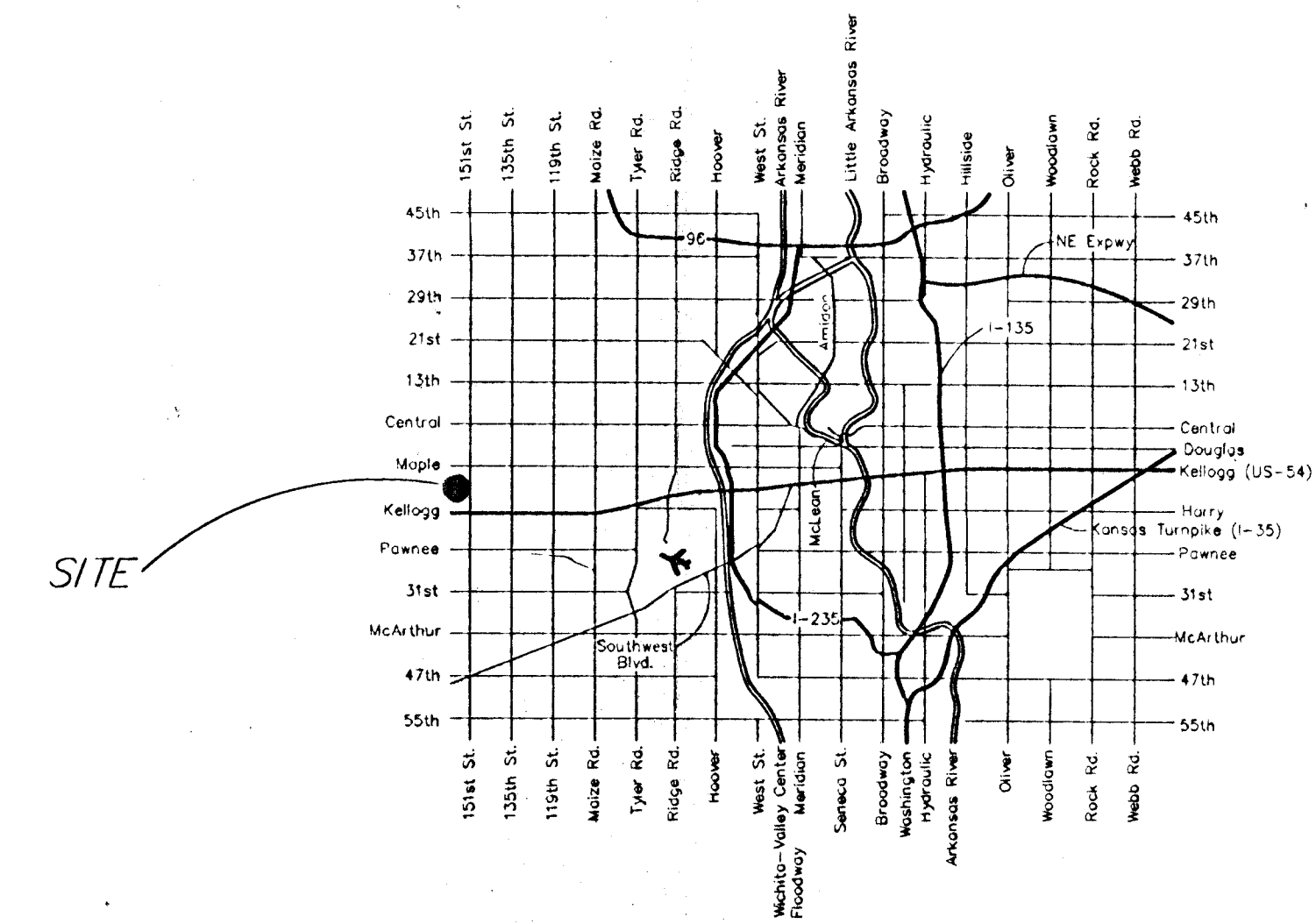


LEGEND

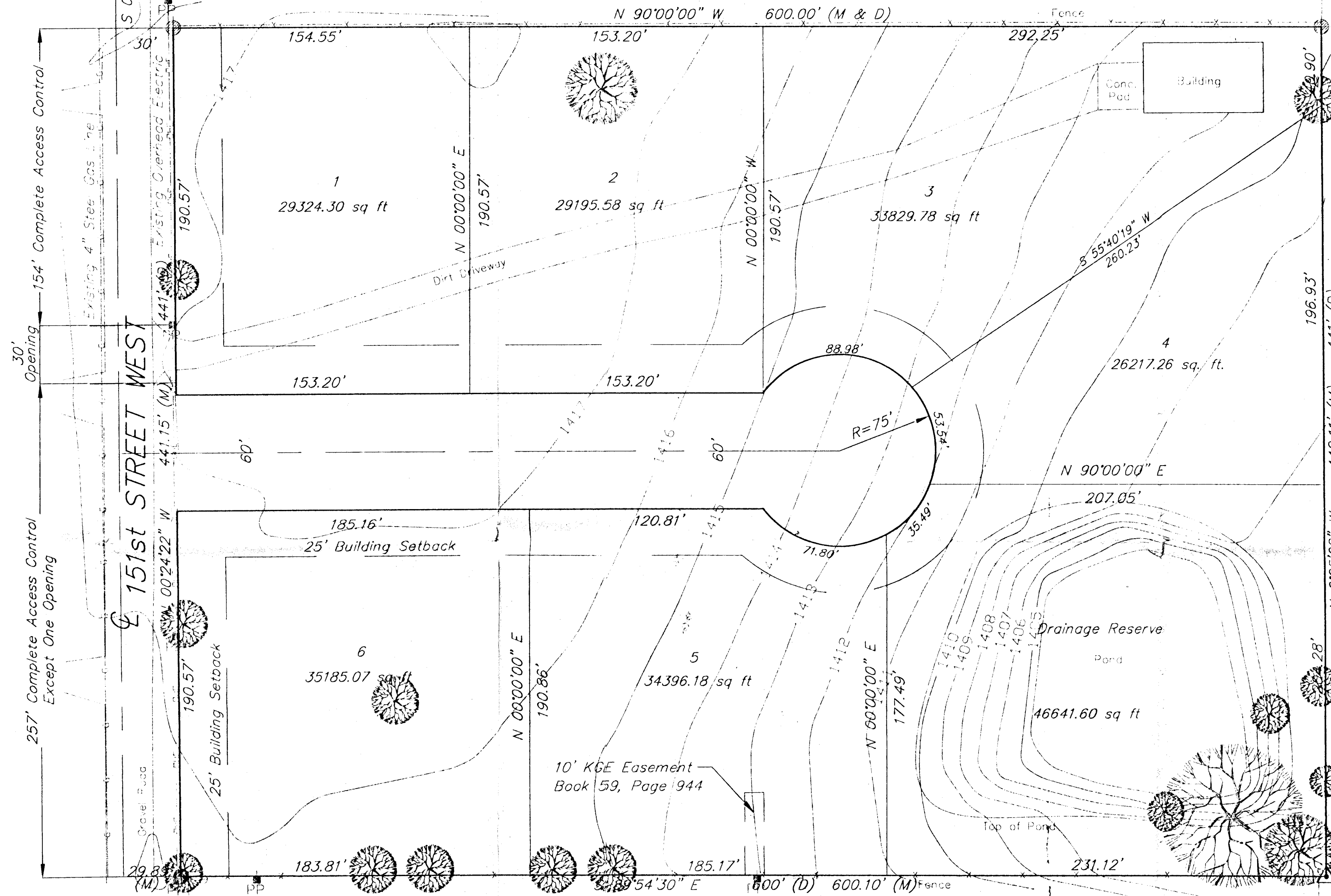
- 1/2" Iron Pipe (found)
- ⊕ 5/8" Rebar (set) AMPA CLS #104
- △ 5/8" Rebar (found) Armstrong
- ⊙ 1/2" Iron in Thimble (found)
- D Deeded
- M Measured

LEGAL DESCRIPTION

The Northwest 1/4 of Section 26, Township 27 South, Range 2 West, of the 6th Principle Meridian, Sedgwick County, Kansas, described as beginning at a point on the West line of Northwest 1/4, 1556 feet South of the Northwest corner of Section 26 thereof;
thence South, along the West line of said Northwest 1/4, a distance of 441 feet;
thence East, parallel with the North line of said Northwest 1/4, a distance of 630 feet;
thence North, parallel with the West line of said Northwest 1/4, a distance of 441 feet;
thence West, parallel with the North line of said Northwest 1/4, a distance of 630 feet to the Point of Beginning.



LOCATION MAP



Richard & Donna Savina
14901 W. Maple
Wichita, KS 67235

Betty Sanders
1030 S. 151st St. West
Goddard, KS 67052

BENCHMARK:
Cut "□" on west hubguard of RCBC
350' North of Sec. Corner
Elev. = 1392.65' (MSL)

SW CORNER NW 1/4
SEC. 26, T27S, R2W

	AUSTIN MILLER P.A. <small>355 N. Mead, Suite 200 Wichita, KS 67202 316/262-1281 fax: 316/262-9173</small>				PROJECT NUMBER AM NO. 00372	Urban Development Concept High Point West Addition Wichita, Kansas	SHEET 1 OF 1	REVISIONS
	DESIGN <i>dw</i>	DRAWN <i>js</i>	FILE <i>concept</i>	DATE 12/18/00	SCALE 1" = 40'			