

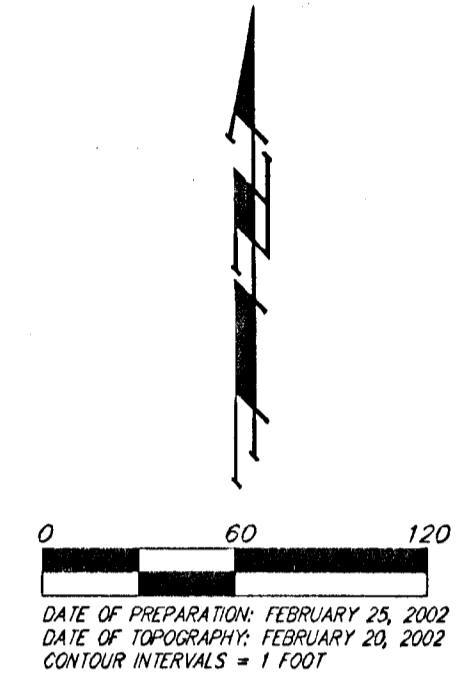
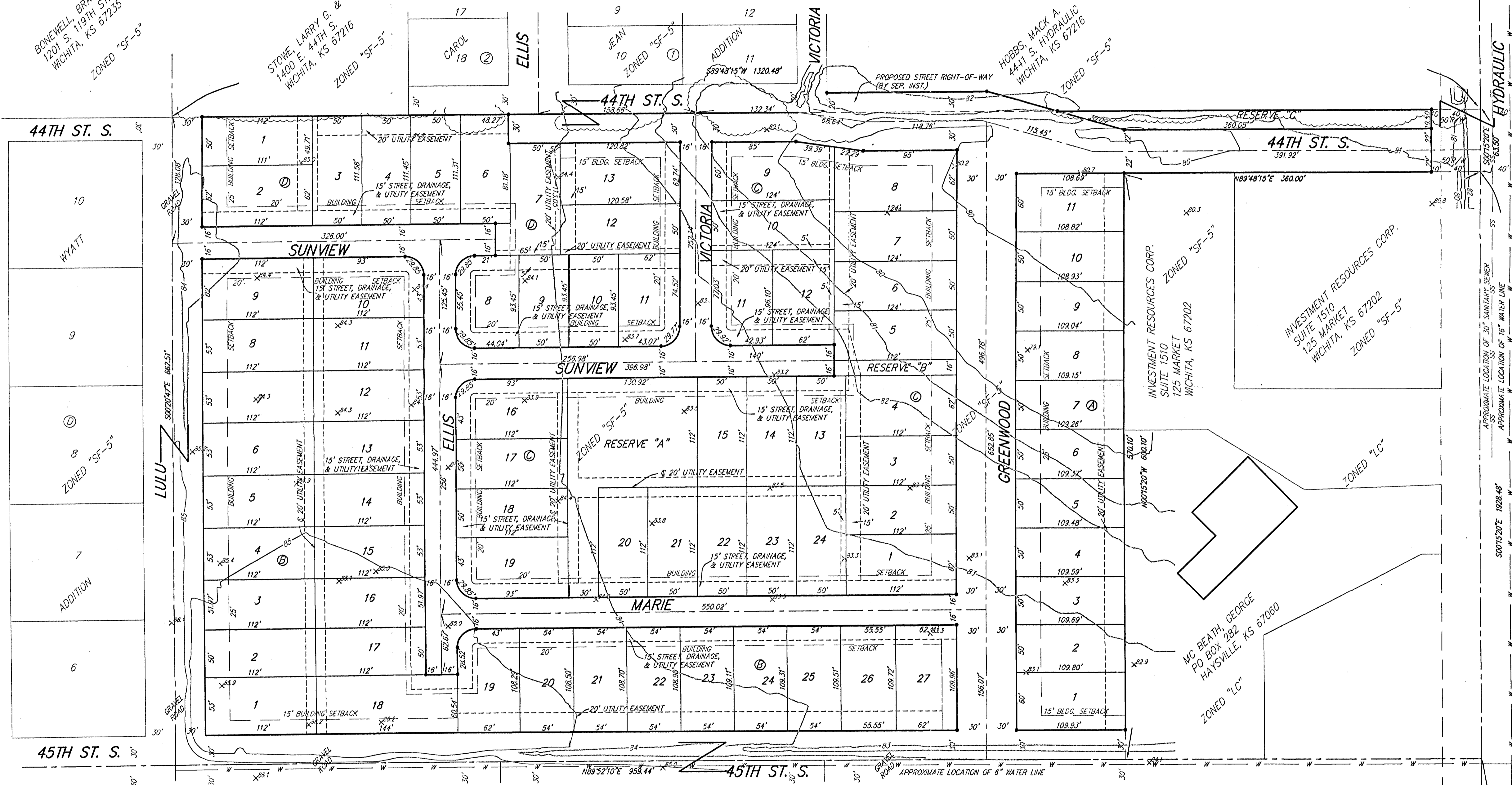
PRELIMINARY PLAT  
**HIDDEN GLEN**  
 AN ADDITION TO WICHITA, SEDGWICK COUNTY, KANSAS

NE COR. SE 1/4, SEC. 16,  
 TWP. 28-S, R-1-E

BONEWELL, BRANDON T.  
 1201 S. 19TH ST. W.  
 WICHITA, KS 67235  
 ZONED "SF-5"

STOWE, LARRY G. & HELEN C.  
 1400 E. 44TH S.  
 WICHITA, KS 67216  
 ZONED "SF-5"

HOBBS, MACY A.  
 4441 S. HYDRAULIC  
 WICHITA, KS 67216  
 ZONED "SF-5"



DATE OF PREPARATION: FEBRUARY 25, 2002  
 DATE OF TOPOGRAPHY: FEBRUARY 20, 2002  
 CONTOUR INTERVALS = 1 FOOT

OWNER:  
 Hickory Creek, L.L.C.  
 12602 W. 13th  
 Wichita, KS 67235

LEGAL DESCRIPTION:  
 The S 1/2 of the NE 1/4 of the SE 1/4 of Sec. 16, Twp. 28-S,  
 R-1-E of the 6th P.M., Sedgwick County, Kansas, EXCEPT  
 therefrom the following described tracts: Beginning at the  
 SE corner of the S 1/2 of the NE 1/4 of said SE 1/4; thence  
 westerly along the south line of the S 1/2 of the NE 1/4 of said  
 SE 1/4, 360.00 feet; thence northerly parallel with the east  
 line of said SE 1/4, 601.10 feet, more or less, to a point  
 63.50 feet south of the north line of the S 1/2 of the NE 1/4  
 of said SE 1/4; thence easterly parallel with the north line  
 of the S 1/2 of the NE 1/4 of said SE 1/4, 360.00 feet to a point  
 on the east line of said SE 1/4; thence southerly along the  
 east line of said SE 1/4 to the point of beginning, and subject  
 to the east 40.00 feet thereof for road right-of-way.

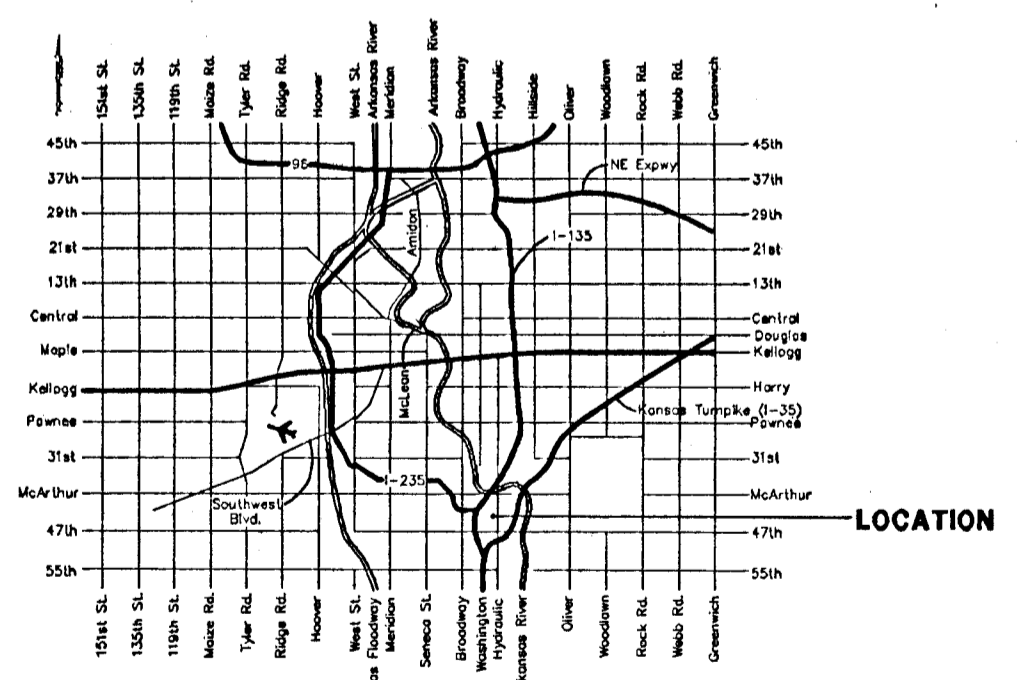
BENCHMARK:  
 City of Wichita benchmark, SE corner of intersection of  
 Hydraulic and 43rd St. South, 25.50' east and 35' south of  
 centerline.  
 Elev. = 84.93 City Datum

- = #4 REBAR W/ "BAUGHMAN" CAP (SET)
- = 3/4" IRON (FOUND)
- = "P-K" NAIL IN WASHER (FOUND)
- (M) = MEASURED
- (D) = DESCRIBED
- (P) = PLATTED
- (C) = CALCULATED

Reserve "A" is reserved for landscaping, open space,  
 recreational uses, gazebos, sidewalks, berms, drainage  
 purposes, and utilities as confined to easements.

Reserve "B" is reserved for landscaping, open space, sidewalks,  
 drainage purposes, and utilities as confined to easements.

Reserve "C" is reserved for landscaping, entry monuments,  
 berms, open space, drainage purposes, and utilities as  
 confined to easements.



IVES  
 2ND  
 ZONED "SF-5"  
 ADDITION  
 LULU

SOUTH 10

ELLIS

10  
 HYDRAULIC

VICTORIA

1  
 PARK

2  
 ADDITION  
 ZONED "SF-5"

4  
 5

SE COR. SE 1/4, SEC. 16,  
 TWP. 28-S, R-1-E

