

UNPLATTED

April Family Trust
co: April Speyer
3501 S. 154th St. E
Wichita, KS 67232-9426
ZONED "RR"

Larry L. & Helen A. Lashay
3555 S. 154th St. E.
Wichita, KS 67232-9426
ZONED SPECIAL USE CASE
CO 1-89

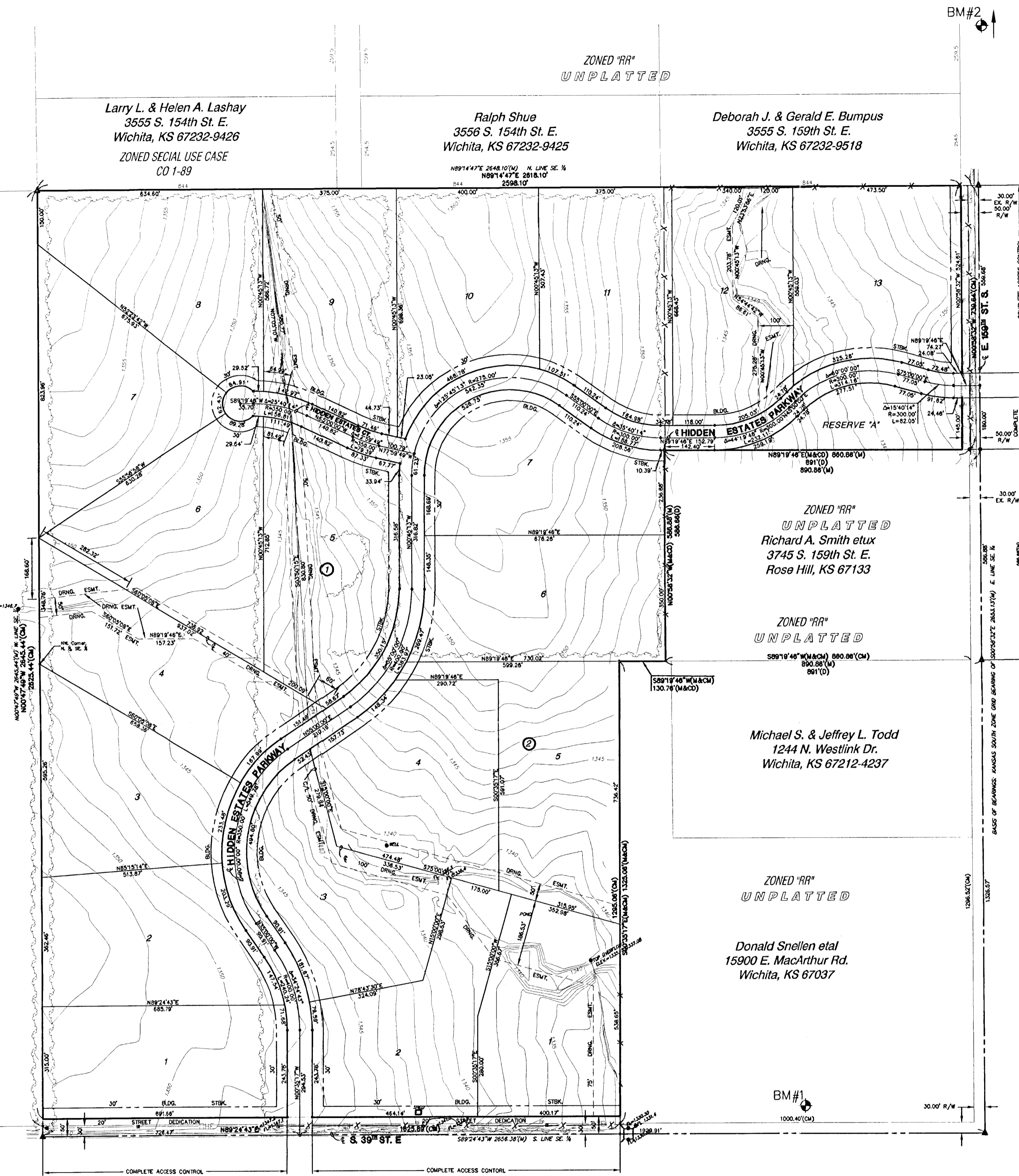
ZONED "RR"
UNPLATTED

Ralph Shue
3556 S. 154th St. E.
Wichita, KS 67232-9425

Deborah J. & Gerald E. Bumpus
3555 S. 159th St. E.
Wichita, KS 67232-9518

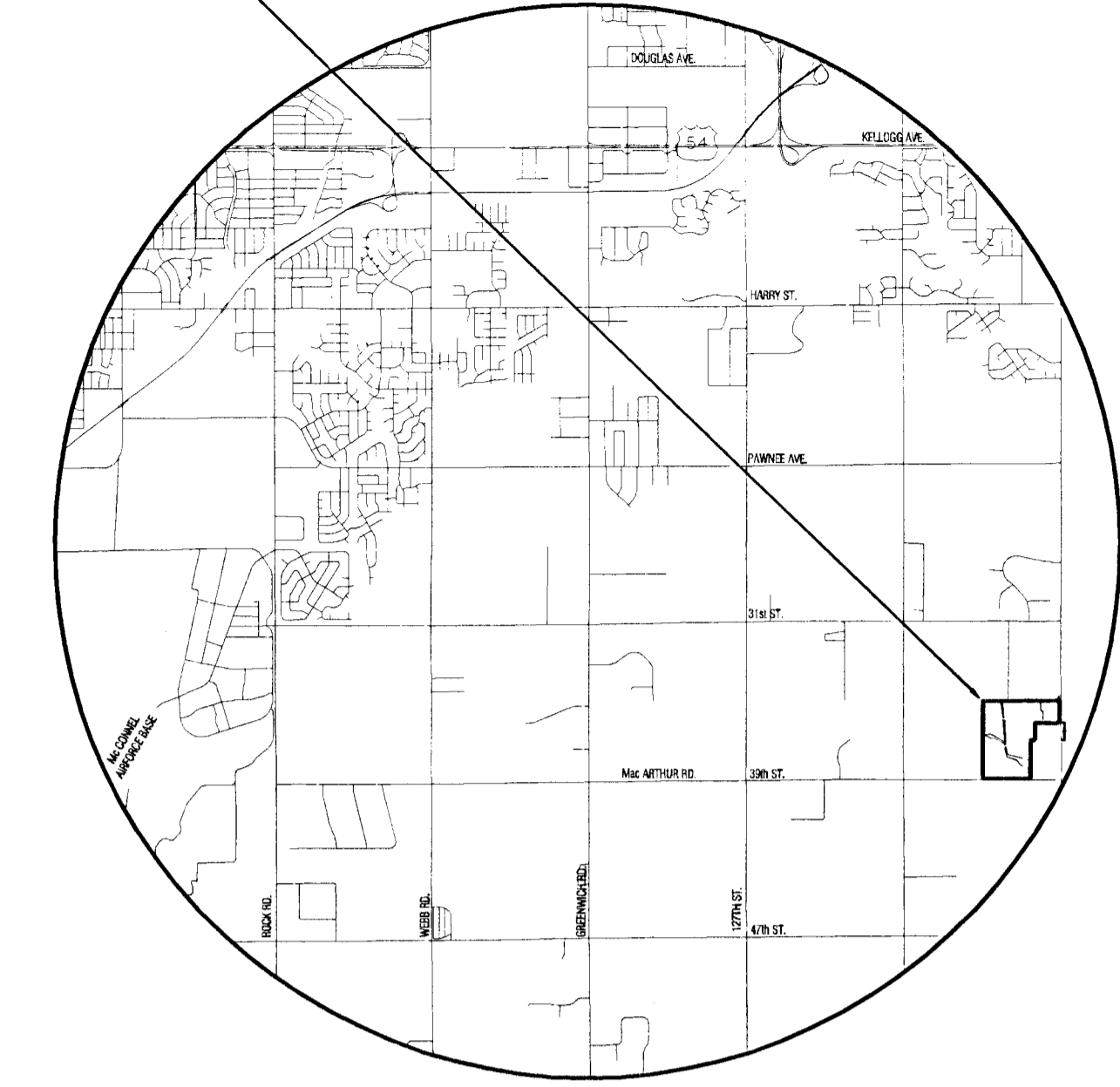
UNPLATTED

David Brown
14200 Donegal Cir.
Wichita, KS 67230-1516
ZONED "RR"



BM#2

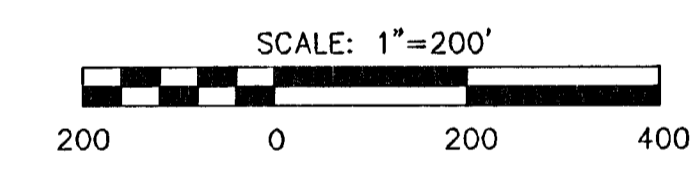
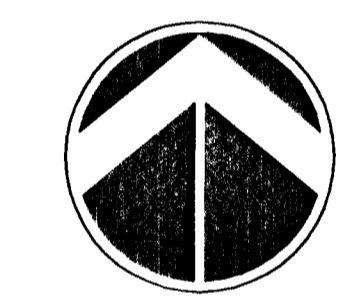
PLAT LOCATION



VICINITY MAP

NOTES

1. ZONING: EXISTING/PROPOSED RURAL RESIDENTIAL - "RR"
2. RESERVE "A": IS PLATTED FOR OPEN SPACE, LANDSCAPING, IRRIGATION, DRAINAGE, AND MONUMENTS
3. LOT MINIMUM PADS AS INDICATED ON DRAINAGE PLAN, PROVIDED AT THE TIME OF PLATTING.
4. TOTAL ACREAGE: 116.44 ac.



BENCHMARK

- BM#1 "I" cut on North hub-guard of reinforced concrete box culvert 513' West of and 12' North of the SE. cor., Sec. 12 (from USGS SW. cor. Sec. 10). ELEV. = 1334.97'
- BM#2 "I" cut on East hub-guard of reinforced concrete box culvert 75' South of the NE. cor., Sec. 12. ELEV. = 1334.97'

LEGEND

- ⊗ - CONIFEROUS TREE & DIAMETER
- ⊙ - DECIDUOUS TREE & DIAMETER
- ⊙ - SIGN
- ⊙ - BUSH
- ⊙ - POWER POLE AND GUY ANCHOR
- ⊙ - ELECTRIC BOX
- ⊙ - EDGE OF TREES
- ⊙ - FENCE
- ⊙ - BENCHMARK
- ⊙ - SECTION CORNER
- ⊙ - 5/8" REBAR/MKEC
- ⊙ - CLS #39 SET
- ⊙ - PROPERTY CORNER FOUND
- ⊙ - POLE - POLE
- ⊙ - GATE
- ⊙ - WALL
- ⊙ - LIGHT POLE
- ⊙ - FIRE HYDRANT
- ⊙ - WATER VALVE
- ⊙ - WATER METER
- ⊙ - TELEPHONE RISER
- ⊙ - INLET
- ⊙ - WATER LINE
- ⊙ - TELEPHONE LINE
- ⊙ - OVERHEAD ELECTRIC

PRELIMINARY PLAT HIDDEN ESTATES ADDITION

OWNER/DEVELOPER: William G. Farha 8100 E. 22nd Street Bldg. 1700-2 Wichita, KS 67226 (316) 652-9100

DATE: June 10th, 2002

