

LEGEND

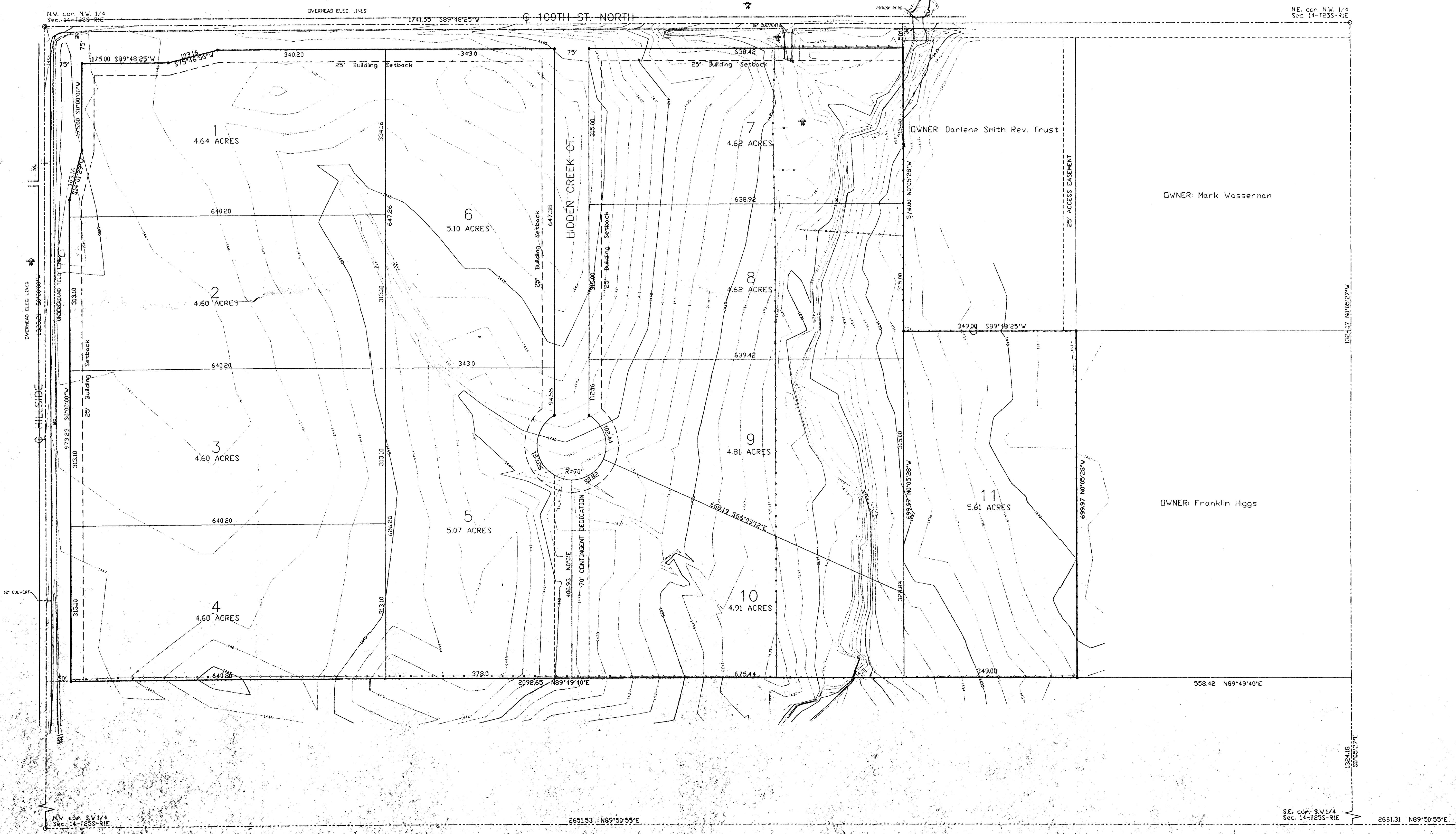
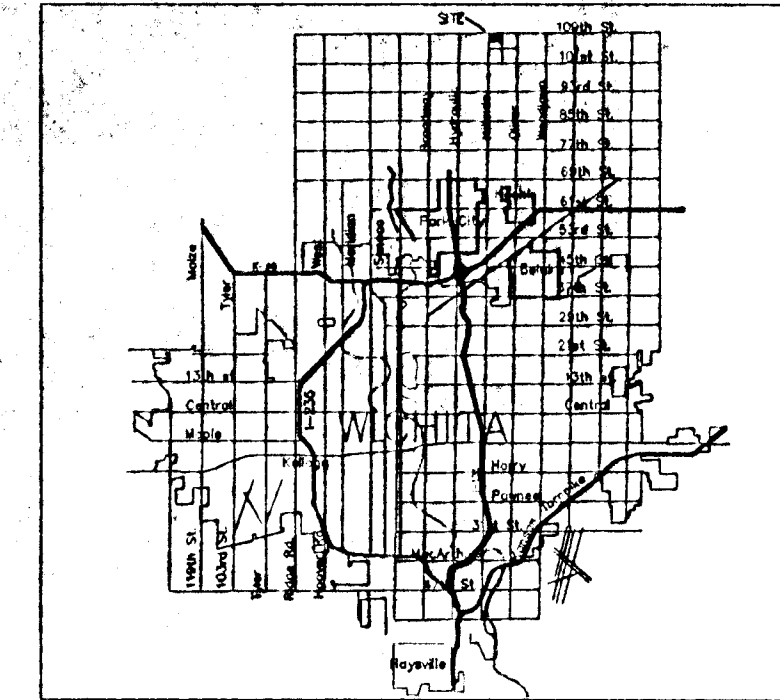
- - set 3/8" rebar & "Armstrong" cap
- - iron bar found
- ⊙ - 1" iron pipe found
- - found 1/2" iron pipe
- - property line
- - center line
- - easement line
- - setback line
- - underground utility
- - fence
- ⊕ - cable TV riser
- ⊕ - telephone riser
- ⊕ - elec. transformer
- ⊕ - power pole
- ⊕ - gas meter
- ⊕ - gas valve
- ⊕ - water meter
- ⊕ - water valve



PRELIMINARY PLAT HIDDEN CREEK LLC ADDITION TO SEDGWICK COUNTY, KANSAS

OWNER: Ken Minihon
7325 N. Hoover
Valley Center, KS 67147
ZONING: RR

LOCATION MAP



1607 E. HARRY
 WICHITA, KANSAS 67217
 PH: 781-670-0082
 FAX: 781-670-0082
ARMSTRONG
LAND SURVEY, P.A.