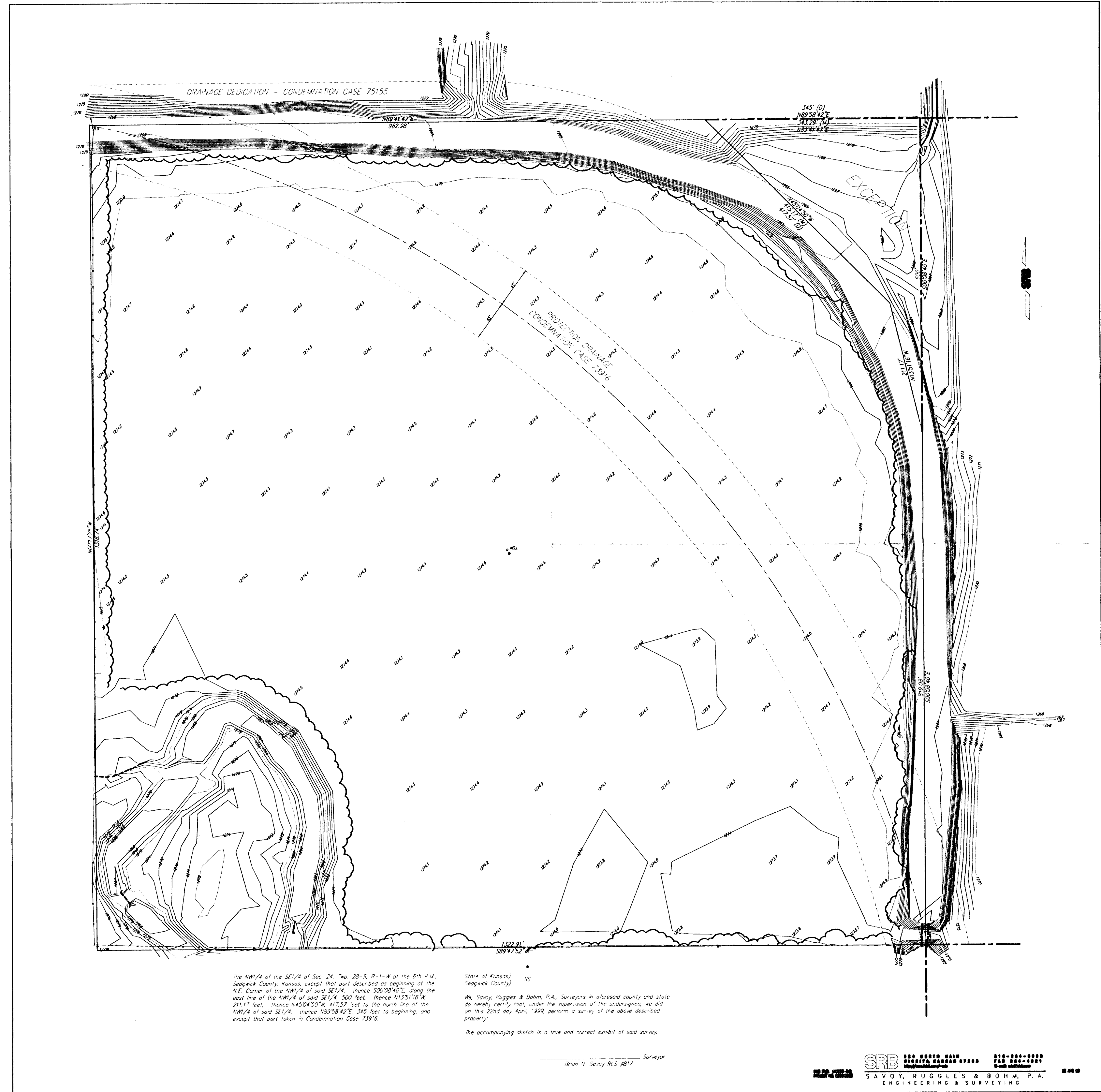


G:\APPS\DOCA\16681\topo.dwg Mon Jun 05 15:00:49 2000 Kenny Hill, Poe & Associates of Kansas, Inc.



The NW 1/4 of the SE 1/4 of Sec. 24, Twp. 28-S, R-1-W of the 6th J.M. Sedwick County, Kansas, except that part described as beginning at the N.E. Corner of the NW 1/4 of said SE 1/4, thence S89°58'42"E, along the east line of the NW 1/4 of said SE 1/4, 500 feet, thence N13°17'0"N, 281.17 feet, thence N45°24'50"W, 417.57 feet to the north line of the NW 1/4 of said SE 1/4, thence N69°58'42"E, 345 feet to beginning, and except that part taken in Condemnation Case 73976.

State of Kansas, SS
 Sedwick County)
 We, Savoy, Ruggles & Bohm, P.A., Surveyors in aforesaid county and state do hereby certify that, under the assumption of the undersigned, we did on this 22nd day of April, 1999, perform a survey of the above described property.

The accompanying sketch is a true and correct exhibit of said survey.

Drum N. Savoy, RLS #817 Surveyor

SRB SAVOY, RUGGLES & BOHM, P.A.
 ENGINEERING & SURVEYING