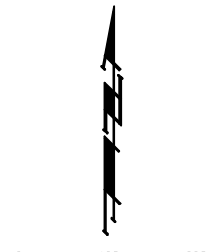
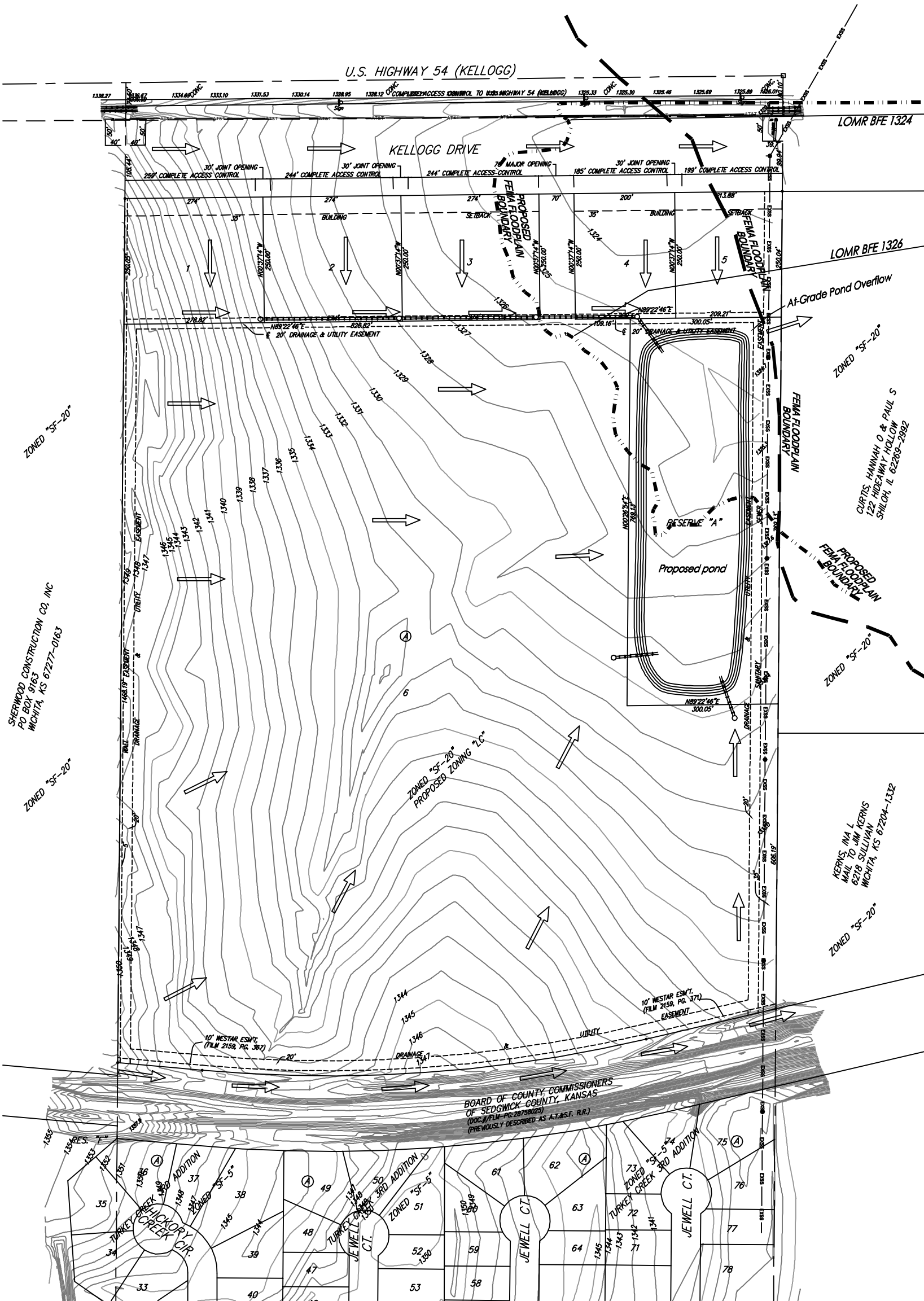


DRAINAGE CONCEPT

# DUGAN WEST KELLOGG COMMERCIAL ADDITION

## WICHITA, SEDGWICK COUNTY, KANSAS



DATE OF PREPARATION: 14 SEPTEMBER 2009  
 DATE OF TOPOGRAPHY: 5 JANUARY 2004  
 CONTOUR INTERVALS = 1 FOOT

NOTE:  
 FEMA Floodplain is scaled per location per FEMA FIRM Panel 340 of 700, for Sedgwick County, Kansas, Map Number 20173C0508E; Effective February 2, 2007.  
 The proposed FEMA Floodplain Boundary is scaled per location per City of Wichita pending LOMR Case #08-07-0967P.

NOTE:  
 ADDITIONAL BUILDING SETBACK REQUIREMENTS AND RESTRICTIONS PER DUGAN WEST KELLOGG COMMUNITY UNIT PLAN DP-320.

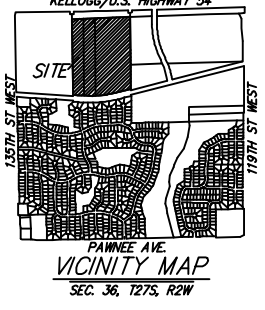
OWNER:  
 JOHN E. DUGAN  
 2416 MORNING DEW  
 WICHITA, KS 67202  
 316-721-2416

LEGAL DESCRIPTION:  
 THE EAST HALF OF THE NORTHWEST QUARTER OF SECTION 36, TOWNSHIP 27 SOUTH, RANGE 2 WEST OF THE 6TH PRINCIPAL MERIDIAN, SEDGWICK COUNTY, KANSAS LING NORTH OF THE A183 RAILROAD RIGHT-OF-WAY, SUBJECT TO ROAD RIGHTS-OF-WAY OF RECORD.

BENCHMARK:  
 135TH ST. W. & PAWNEE - CITY OF WICHITA BENCHMARK DISC ON SW CORNER OF CONCRETE BASE OF HIGH LINE POLE. ELEV. = 1360.12 NAVD88

- = #4 REBAR W/ 'BAUGHMAN' CAP (SET)
- △ = 1" IRON IN BROKEN STONE (FOUND)
- = #5 REBAR IN THIMBLE (FOUND)
- ⊗ = 3/4" IRON (FOUND)
- (M) = MEASURED
- (D) = DESCRIBED
- (P) = PLATTED
- (C) = CALCULATED
- (C-D) = CALCULATED PER DESCRIBED INFO.
- (C-P) = CALCULATED PER PLATTED INFO.

- EB □ = Electric Box
- FH ● = Fire Hydrant
- Sign △ = Sign
- = Sanitary Sewer Manhole
- T ● = Tree



NOTES: Lots and portions of lots located in the City of Wichita Floodplain will be filled and removed via a FEMA LOMR-F. Any Kansas DWR Permits will be obtained prior to fill being placed.

On-site SWS will be utilized for the developed lots. Size and location will be determined at final drainage plan or at site development.

Pond sizing and runoff will be modeled and shown on Final Drainage Plan.

### DRAINAGE CONCEPT DUGAN WEST KELLOGG COMMERCIAL ADDITION

21 SEPTEMBER 2009  
**Baughman Company, P.A.**  
 315 Ellis St., Wichita, KS 67211 P 316-262-7271 F 316-262-0149  
 ENGINEERING | SURVEYING | PLANNING | LANDSCAPE ARCHITECTURE