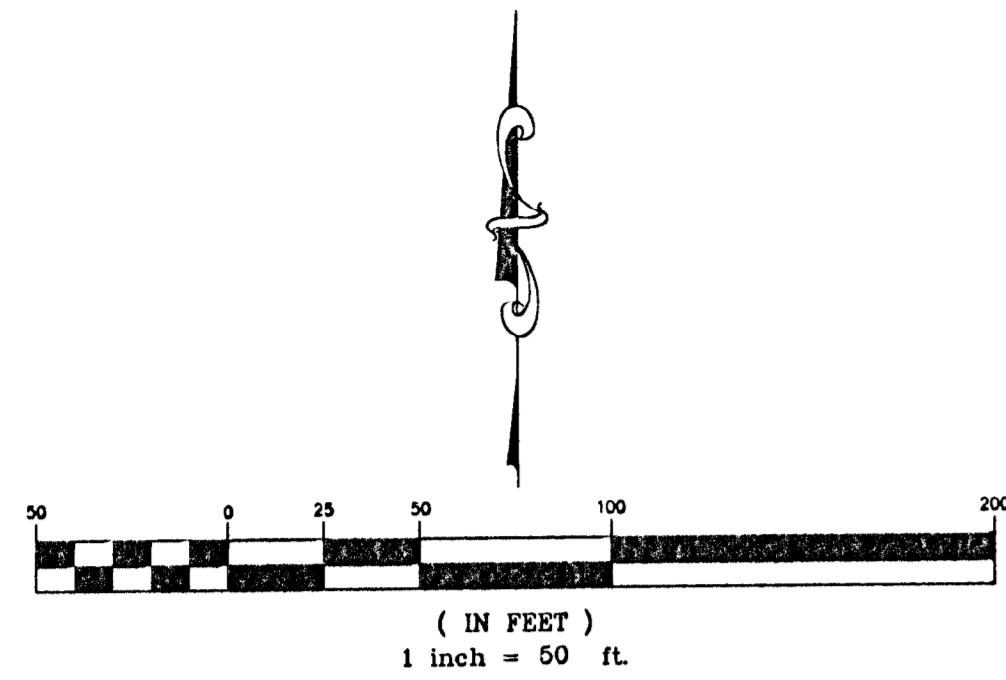


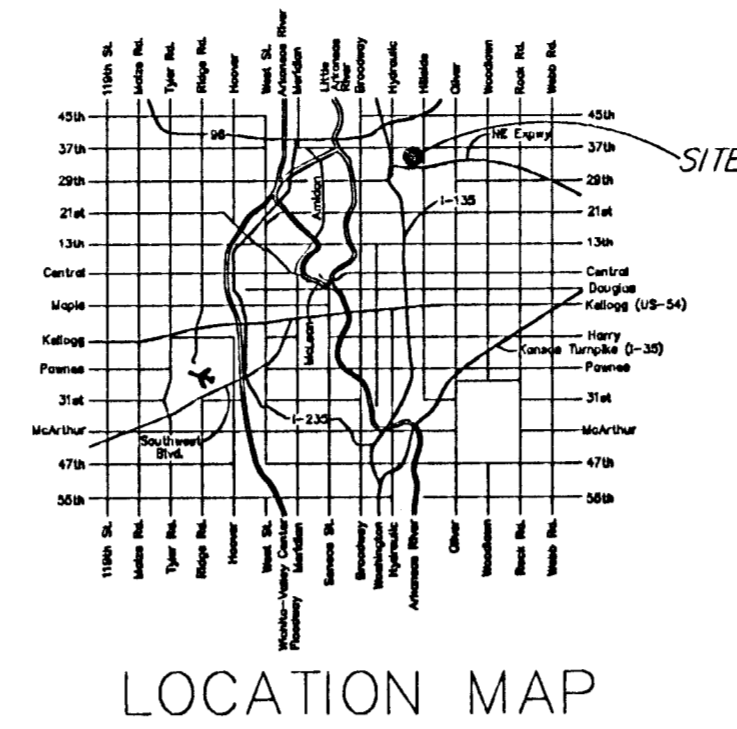
FINAL PLAT
HENTZEN ADDITION
TO SEDGWICK COUNTY, KANSAS

Northeast Quarter of Section 34, Township 26 South, Range 1 East of the 6th. P.M.



- LEGEND**
- PK Nail (found)
 - 1/2" Iron (found)
 - ⊕ 1/2" Iron in Thimble (found)
 - ⊙ 5/8" Rebar B. Ward LS#920 (set)

BENCHMARK: COW Benchmark, Southeast corner of intersection of 37th and Hillside, on the Northwest corner of the traffic signal light base.
40.10' South of Centerline.
60.50' East of Centerline.
Elev. = 1,352.75 (MSL)
163.35 (COW)



State of Kansas)
County of Sedgwick)

State of Kansas) ss
City of Wichita)

I, Bradley C. Ward, a registered land surveyor in aforesaid County and State, do hereby certify that this map or plat and the survey on which it is based were made in accordance with Minimum Standards for Boundary Surveys.

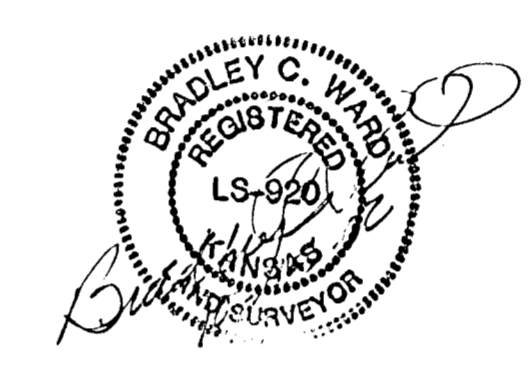
This plat of Hentzen Addition, Wichita, Sedgwick County, Kansas, has been submitted to and approved by the Wichita-Sedgwick County Metropolitan Area Planning Commission, Wichita, Kansas. Dated this 11th day of ~~September~~ **October**, 2002. Wichita-Sedgwick County Metropolitan Area Planning Commission.

Dr. Kerry C. Coy Vice Chair
Bernard M. Hentzen Dr. Kerry C. Coy
Dale Miller Secretary
Dale Miller



LEGAL DESCRIPTION

The East 50 acres of the North 1/2 of the Northeast 1/4, Section 34, Township 26 South, Range 1 East, of the 6th Principal Meridian, Sedgwick County, Kansas. EXCEPT the West 860 feet and the South 684 feet and road right-of-ways. Tract contains 10.4 acres ±.



Bradley C. Ward LS #920
Not original unless signed in blue ink

State of Kansas) ss
Sedgwick County)

State of Kansas) ss
City of Wichita)

This plat and all dedications shown hereon accepted by the City Council of the City of Wichita, Kansas, this day of _____, 2002.

At the Direction of the City Council
_____, City Manager
Chris Cherches
_____, City Clerk
Pat G. Jones
Pat G. Jones
Entered on transfer record this _____ day of _____, 2002.
_____, County Clerk
Don Brace

State of Kansas) ss
Sedgwick County)

This is to certify that this instrument was filed for record in the Register of Deeds Office, at _____ on the _____ day of _____, 2002, and is duly recorded.

_____, Register of Deeds
Bill Meek
_____, Deputy
Linda Kizzire

Know all men by these presents, that we, the undersigned, have caused the land described in the surveyor's certificate to be platted into Lots, Blocks, Streets and Reserves to be known as Hentzen Addition, Sedgwick County, Kansas. The utility easements are hereby granted as indicated for constructing, maintaining, operating, and repairing public utilities. The drainage easements as indicated are hereby dedicated for the purpose of drainage within said addition. The streets are hereby dedicated to and for the use of the public. The land contained herein is held and shall be conveyed subject to any restrictions, reservations, and covenants on file or hereafter filed in the office of the Register of Deeds of Sedgwick County, Kansas.

Fema floodplain and regulatory floodway boundaries are subject to periodic change, and such change may affect the intended use within the subdivision.

Reserve "A" is hereby platted for drainage, drainage structures, utilities and retention/detention ponds. Said reserve shall be owned and maintained by the owner of Lot 1. Reserve "A" shall also be a flood reserve. A drainage plan has been developed for the plat. All drainage easements, rights-of-way, or reserves shall remain of established grades, or as modified with the approval of the applicable public agency, and unobstructed to allow for the conveyance of stormwater.

Date 10/24/2002
By: *Bernard M. Hentzen*
B&R Land Co., LLC
Bernard M. Hentzen, Partner
By: *Robert A. Hentzen*
B&R Land Co., LLC
Robert A. Hentzen, Partner

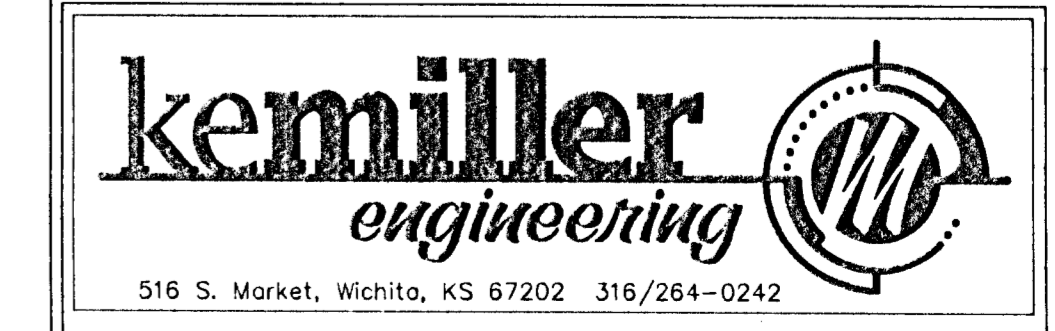
Reviewed and approved with K.S.A. 58-2005 on this 23rd day of October, 2002.
Tricia L. Roubal
Tricia L. Roubal, B.S., #1246
Deputy County Surveyor
Sedgwick County, Kansas

State of Kansas) ss
Sedgwick County)

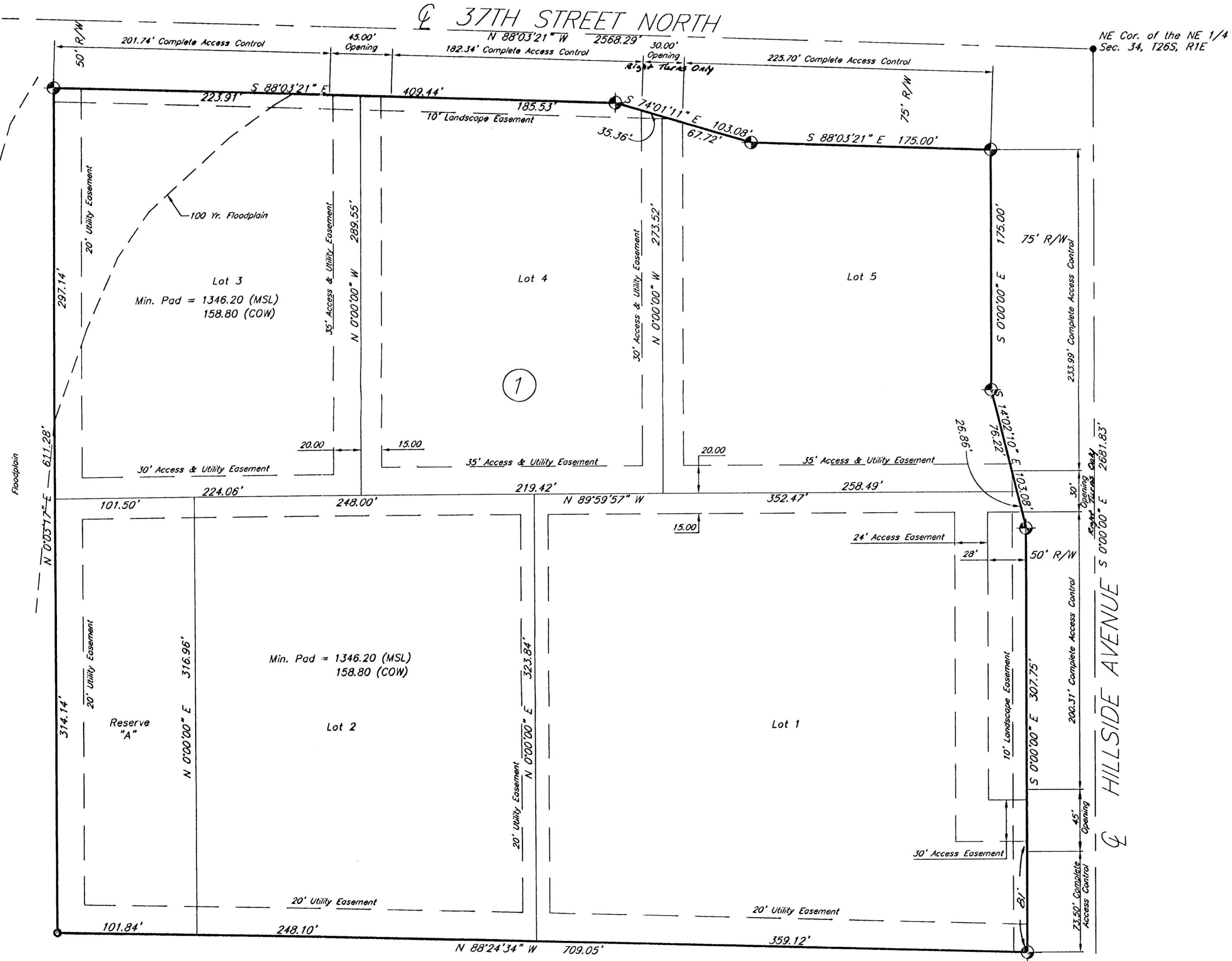
This instrument was acknowledged before me on this 24 day of Oct, 2002, by Bernard M. Hentzen & Robert A. Hentzen, B&R Land Co., LLC, Partners

Juanita Alarcon
Notary Public - Juanita Alarcon
My Commission Expires: 1/2/05

Filename: 02052\FinalPlat Date Plat Prepared: 10/01/2002



NW Cor. of the NE 1/4
Sec. 34, T26S, R1E



SE Cor. of the NE 1/4
Sec. 34, T26S, R1E

Date of Survey 3/1/02