

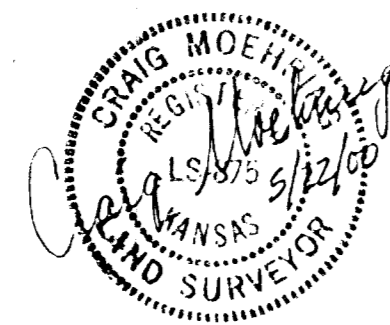
PRELIMINARY PLAT
of
HEIMERMAN MEADOWS ADDITION
To Sedgwick County, Kansas

1" = 60'
#00-023-SD

- = IRON W/MOEHRING CAP (SET)
- = IRON W/GARBER CAP (FOUND)
- △ = IRON FOUND (UNKNOWN ORIGIN)
- UP = UTILITY POLE
- OE = OVERHEAD ELECTRIC

LEGAL DESCRIPTION

THE SOUTH HALF OF THE SOUTH HALF OF THE WEST HALF OF THE SOUTHEAST QUARTER OF SECTION 15, TOWNSHIP 27 SOUTH, RANGE 4 WEST OF THE 6TH P.M., SEDGWICK COUNTY, KANSAS.

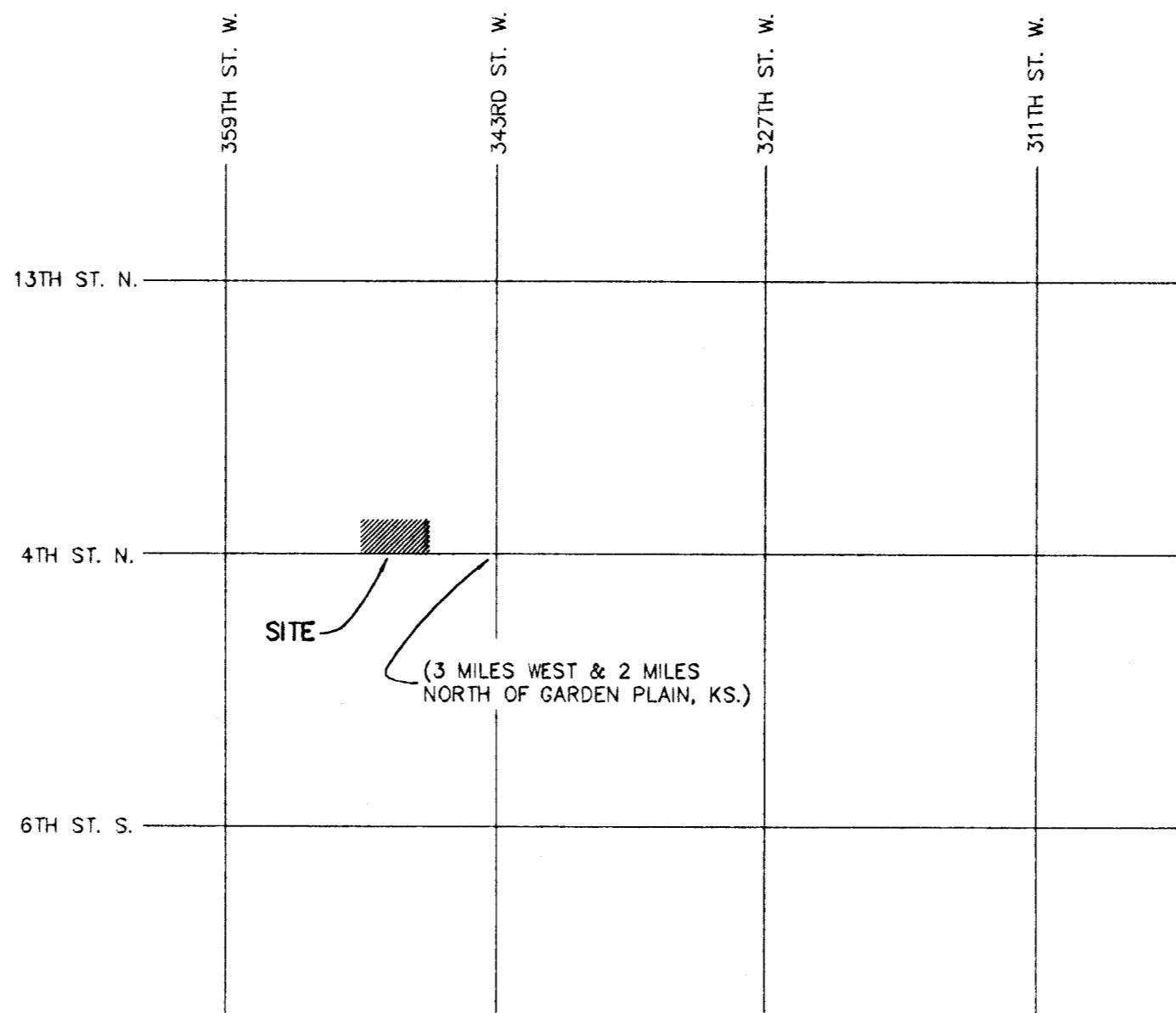


MOEHRING & ASSOCIATES
CONSULTING ENGINEERS
WICHITA, KS.
May 22, 2000

BENCHMARK

R.R. SPIKE IN UP, 674' E. & 30' S. OF THE S.W. COR., S.E. 1/4, SEC. 15, ELEV. = 1463.39 M.S.L.

ADD 1400.00 TO SPOT ELEVATIONS TO CONVERT TO M.S.L.

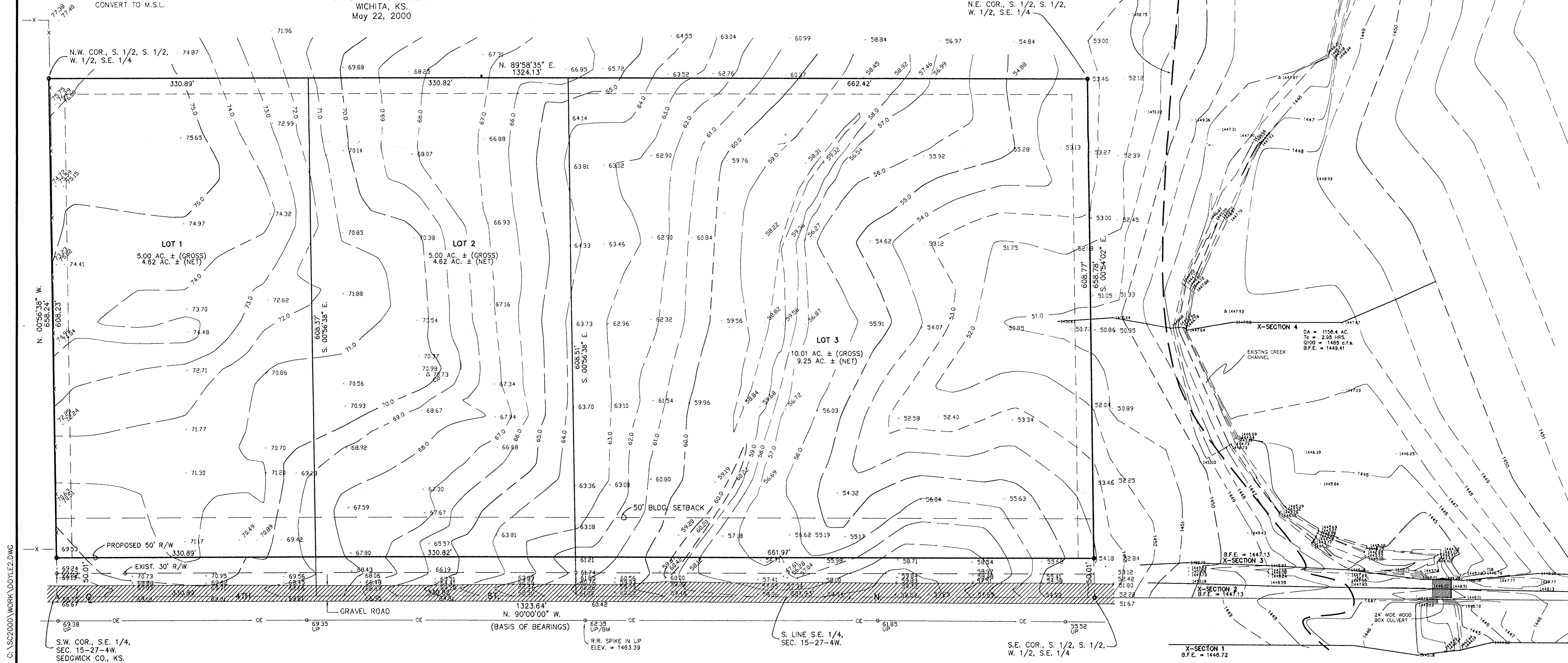


VICINITY MAP
N.T.S.

DA = 1115.6 AC.
Tc = 2.87 HRS.
Q100 = 1463 c.f.s.
B.F.E. = 1451.17

100 YEAR
BASE FLOOD ELEVATION

N.E. COR., S. 1/2, S. 1/2,
W. 1/2, S.E. 1/4



C:\S2000\WORK\DOYLE2.DWG

S.W. COR., S.E. 1/4,
SEC. 15-27-4W,
SEDGWICK CO., KS.

1323.64' W.
N. 90°00'00" W.
(BASIS OF BEARINGS)

S. LINE S.E. 1/4,
SEC. 15-27-4W.

S.E. COR., S. 1/2, S. 1/2,
W. 1/2, S.E. 1/4

X-SECTION 1
B.F.E. = 1446.72