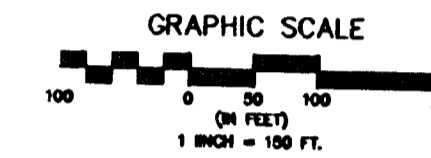


# HEDGE APPLE ESTATES

an Addition to Sedgwick County, Kansas

LINE	LENGTH	BEARING
L1	992.53	S88°38'39"V
L2	1326.56	N01°32'41"V
L3	1309.08	N01°42'50"V
L4	1163.56	S88°38'39"V
L5	207.53	N16°46'28"V
L6	133.60	N54°09'53"E
L7	40.00	S35°50'07"E
L8	268.11	S05°03'14"V
L9	60.00	N01°21'21"V
L10	183.95	N01°21'21"V
L11	303.74	N01°29'13"V
L12	162.06	S01°10'56"E
L13	229.96	S22°36'42"V
L14	496.84	S88°38'39"V
L15	58.12	S24°18'09"V
L16	92.47	S01°21'21"E
L17	60.00	S01°21'21"E
L18	183.39	S39°22'04"V
L19	100.10	S03°50'36"V



### Legend

- Iron Pin
- Curve Number
- Line Number
- C.A.C.

### Benchmark:

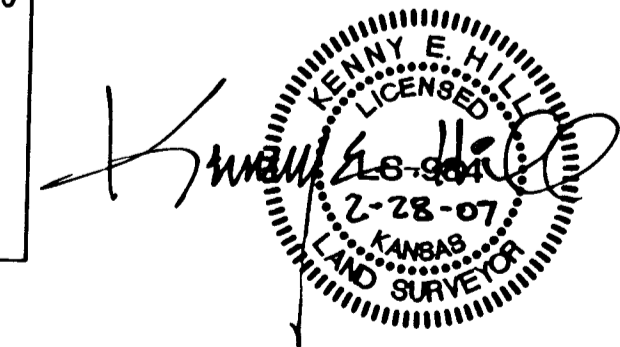
NGVD Datum - Date of survey: November 2004  
 Top 5/8" rebar being the NW corner of Section 36-25-1E  
 Elevation 1363.17

### Note:

Access to 85th Street North from adjacent lots is prohibited.  
 Access to Oliver Street from adjacent lots is limited as defined in the plotters text.

CURVE	LENGTH	RADIUS	TANGENT	CHORD	DELTA
C1	193.80	200.00	105.27	186.31	55°31'14"
C2	398.41	75.00	39.57	70.00	304°21'49"
C3	358.43	75.00	102.47	273.49	273°49'21"
C4	146.68	385.00	74.24	145.79	21°49'42"
C5	137.74	511.84	69.29	137.32	15°25'07"
C6	130.81	315.00	66.36	129.88	23°47'38"
C7	161.93	385.00	82.18	160.74	24°05'55"
C8	223.89	315.00	116.91	219.21	40°43'25"
C9	96.77	215.00	49.22	95.96	25°39'31"
C10	153.75	343.32	78.18	152.47	25°39'31"
C11	195.31	315.00	100.91	192.19	35°31'28"
C12	398.41	75.00	39.57	70.00	304°21'49"

MINIMUM LOW OPENING ELEVATIONS		
BLOCK 1	BLOCK 2	BLOCK 3
Lot 3 1389.5	Lot 2 1383.0	Lot 1 1388.0
Lot 4 1389.5	Lot 3 1378.5	
Lot 5 1389.0	Lot 4 1383.0	
Lot 6 1389.0	Lot 5 1383.0	
Lot 7 1388.0	Lot 6 1380.5	
Lot 8 1385.0	Lot 7 1382.0	
Lot 9 1384.0	Lot 8 1384.0	
Lot 10 1385.0	Lot 9 1381.5	
Lot 11 1386.0	Lot 10 1380.0	
Lot 12 1394.0		



**PE** POE AND ASSOCIATES, INC.  
 CONSULTING ENGINEERS  
 5940 E. Central, Suite 200 • Wichita, KS 67208 • 316/685-4114 • Fax 316/685-4444