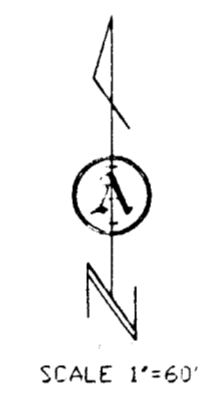


# PRELIMINARY PLAT HEAVENS GATE ADDITION TO SEDGWICK COUNTY, KANSAS

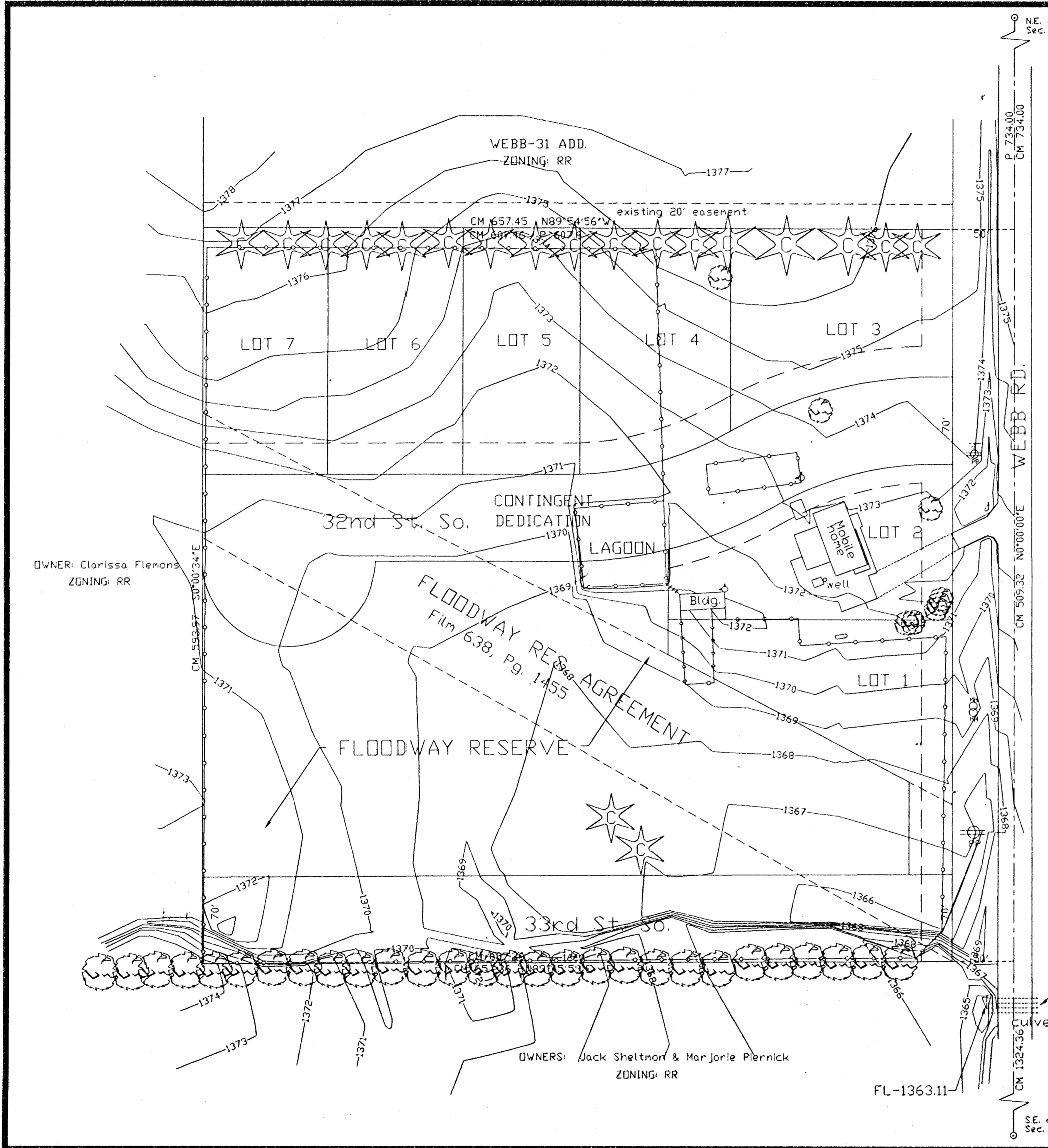
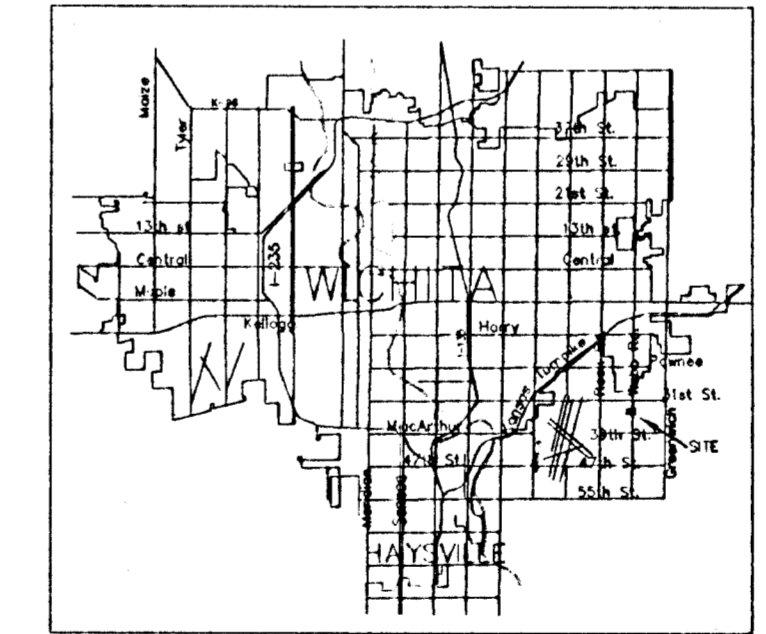
OWNER: Linda K. Patrick  
3333 So. Webb Rd.  
Wichita, KS 67210  
ZONING: RR

## LEGEND

- - set 5/8" rebar & "Armstrong" cap
- - iron in thimble
- ⊙ - found 3/4" iron pipe
- - found 1/2" iron pipe
- ⊠ - found chiseled in concrete
- ⊡ - found chiseled in concrete
- M - measured distance
- P - plat distance
- CM - calculated from measured distance
- - property line
- - - - - center line
- - - - - easement line
- - - - - setback line
- - - - - underground utility
- - - - - chainlink fence
- ⊠ - cable TV riser
- ⊡ - telephone riser
- ⊙ - fire hydrant
- ⊠ - elec. transformer
- ⊡ - air conditioner
- ⊠ - power pole
- ⊡ - manhole
- ⊠ - light pole
- ⊡ - gas meter
- ⊠ - gas valve
- ⊡ - water meter
- ⊠ - water valve
- ⊡ - coniferous tree
- ⊠ - deciduous tree



## LOCATION MAP



**ARMSTRONG**  
**LAND SURVEY, P.A.**

250 N. MATHEWSON  
WICHITA, KANSAS  
PH - (316) 283-0092  
Fax - (316) 283-0092