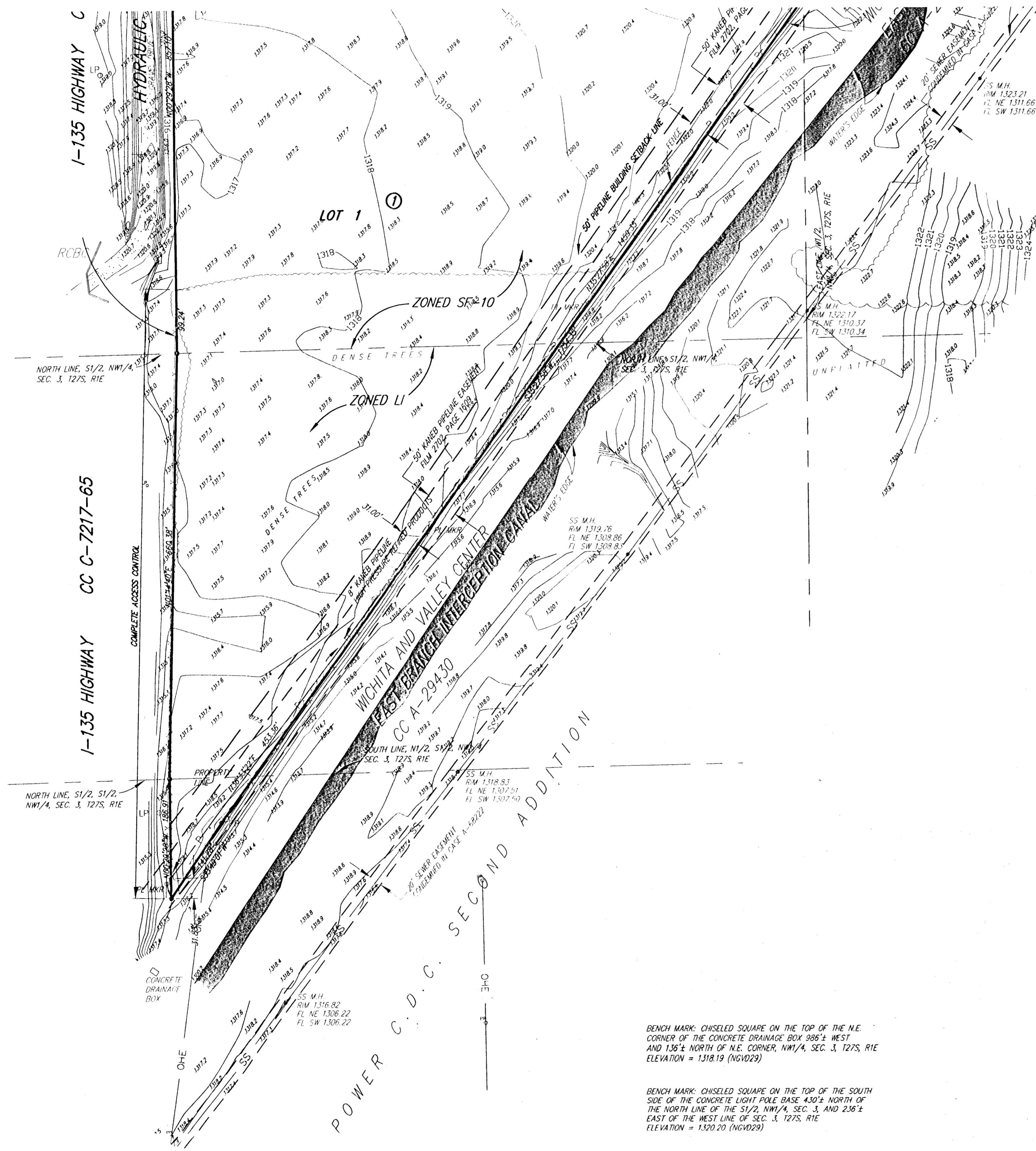


Revised Preliminary Plat

HEARTLAND PREPAREDNESS CENTER

An Addition to Wichita, Sedgwick County, Kansas



1" = 100'

LEGEND

- SS SANITARY SEWER (CITY OF WICHITA)
- UGE UNDERGROUND ELECTRIC (WESTAR)
- OHE OVERHEAD ELECTRIC (WESTAR)
- PL MKR KANEB PIPELINE MARKER
- ELEC. BOX ELECTRIC BOX (WESTAR)
- M.W. MONITOR WELL
- PP POWER POLE
- LP LIGHT POLE
- ↓ SIGN
- SS M.H. SANITARY SEWER MANHOLE (CITY OF WICHITA)
- LOCATION OF SPOT ELEVATION
- LOCATION OF TOP OF RAIL SPOT ELEVATION

Legal Description

That part of the NW1/4 of Section 3, Township 27 South, and that part of the SW1/4 of Section 34, Township 26 South, all in Range 1 East of the 6th P.M., Sedgwick County, Kansas, described as follows: Beginning at the intersection of the east line of I-135 highway right-of-way, as condemned in Condemnation Case C-7212-65, and the northerly line of a parcel described at Book 433, Page 637; thence N52°05'32"E along said northerly line, 707.85 feet; thence N62°15'32"E along said northerly line, 329.02 feet to its intersection with the north line of said NW1/4 of Section 3; thence N62°15'32"E along said northerly line, 232.07 feet; thence N69°46'32"E along said northerly line, 888.18 feet; thence S00°45'09"E, 396.83 feet to the north line of said NW1/4 of Section 3; thence S00°45'09"E, 396.90 feet; thence S74°00'51"W, 503.84 feet to the P.C. of a curve to the left having a radius of 600.00 feet and a central angle of 38°32'53"; thence along said curve a distance of 403.67 feet to the P.T. of said curve, being on the westerly line of the Wichita and Valley Center East Branch Interception Canal Main Drain right-of-way described in Condemnation Case A-29430; thence S35°27'58"W along said line, 1754.35 feet; thence S33°49'01"W, 141.28 feet to a point on the east line of said highway right-of-way; thence N00°29'28"W along said east line, 186.91 feet to its intersection with the north line of the S1/2 of the NW1/4 of said Section 3; thence N01°14'40"W along said east line, 660.38 feet to its intersection with the north line of the S1/2 of the NW1/4 of said Section 3; thence N00°29'28"W along said east line, 857.10 feet to the point of beginning.

OWNER:

City of Wichita
C/O Norman Jakovac, Public Works

SUBDIVIDER & ENGINEER:

Ruggles & Bohm P.A.

FLOOD ZONE:

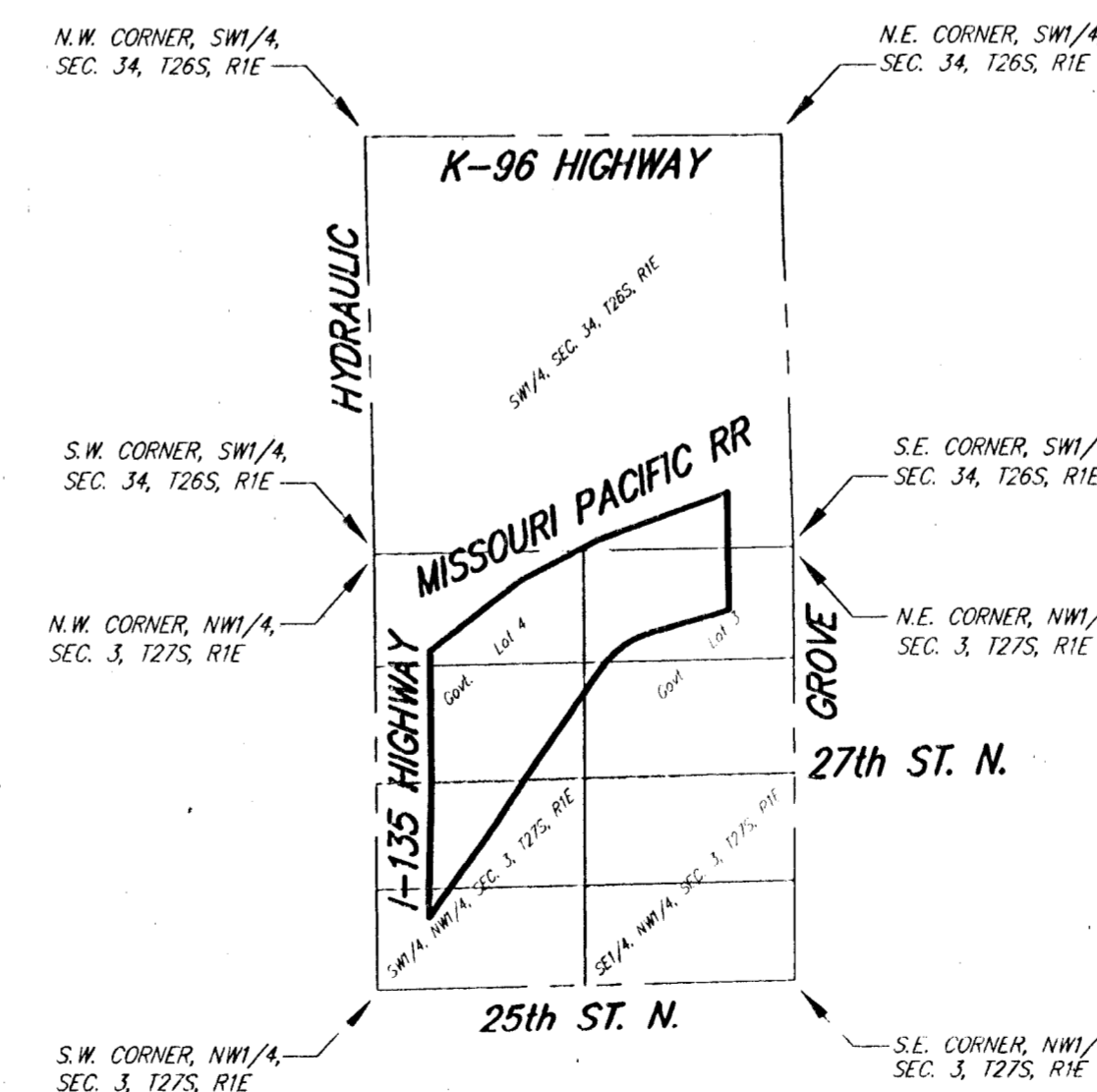
According to the FEMA/FIRM Community Panel No. 200328 0355 E and 200328 0356 E effective February 2, 2007; the property shown herein is located in Zones AE and X

GROSS AREA:

2,059,811.2 Sq. Ft.±
47.29 Acres±

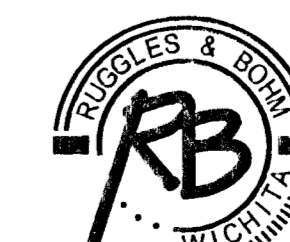
ZONING:

This property is zoned Limited Industrial, General Industrial and SF-10 Single-Family District



BENCH MARK: CHISELED SQUARE ON THE TOP OF THE N.E. CORNER OF THE CONCRETE DRAINAGE BOX 986± WEST AND 136± NORTH OF N.E. CORNER, NW1/4, SEC. 3, T27S, R1E. ELEVATION = 1318.19 (NGVD29)

BENCH MARK: CHISELED SQUARE ON THE TOP OF THE SOUTH SIDE OF THE CONCRETE LIGHT POLE BASE 430± NORTH OF THE NORTH LINE OF THE S1/2, NW1/4, SEC. 3, AND 236± EAST OF THE WEST LINE OF SEC. 3, T27S, R1E. ELEVATION = 1320.20 (NGVD29)



Revised Preliminary Plat
HEARTLAND PREPAREDNESS CENTER
 An Addition to Wichita, Sedgwick County, Kansas



1" = 100'

LEGEND

- SS SANITARY SEWER (CITY OF WICHITA)
- UGE UNDERGROUND ELECTRIC (WESTAR)
- OHE OVERHEAD ELECTRIC (WESTAR)
- PL MKR KANEB PIPELINE MARKER
- ELEC. BOX ELECTRIC BOX (WESTAR)
- M.W. MONITOR WELL
- PP POWER POLE
- LP LIGHT POLE
- 4 SIGN
- SS M.H. SANITARY SEWER MANHOLE (CITY OF WICHITA)
- 200' LOCATION OF SPOT ELEVATION
- 200' LOCATION OF TOP OF RAIL SPOT ELEVATION

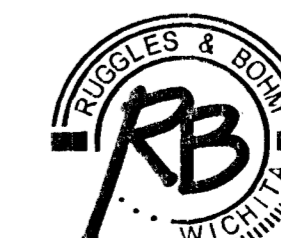
BENCH MARK: CHISELED SQUARE ON THE TOP OF THE N.E. CORNER OF THE CONCRETE DRAINAGE BOX 998 2 WEST AND 136' 2" NORTH OF N.E. CORNER, NW1/4, SEC. 3, 127S, R1E ELEVATION = 1318.19 (NGVD29)

BENCH MARK: CHISELED SQUARE ON THE TOP OF THE SOUTH SIDE OF THE CONCRETE DRAINAGE BOX 998 2 WEST AND 136' 2" NORTH OF N.E. CORNER, NW1/4, SEC. 3, AND 236' 2" EAST OF THE WEST LINE OF SEC. 3, 127S, R1E ELEVATION = 1320.20 (NGVD29)



SHEET 2 OF 2

REV. JULY 22, 2009
 REV. MAY 12, 2008
 REV. FEBRUARY 20, 2003
 DWG FILE: 2316P-W.C.
 PROJECT NO: 03010710P
 JANUARY 13, 2003



Ruggles & Bohm, PA
 Engineering, Surveying, Land Planning
 924 North Main (516) 264-8008
 Wichita, Kansas 67203 (516) 264-4621 fax
 www.rbkansas.com E-mail: info@rbkansas.com