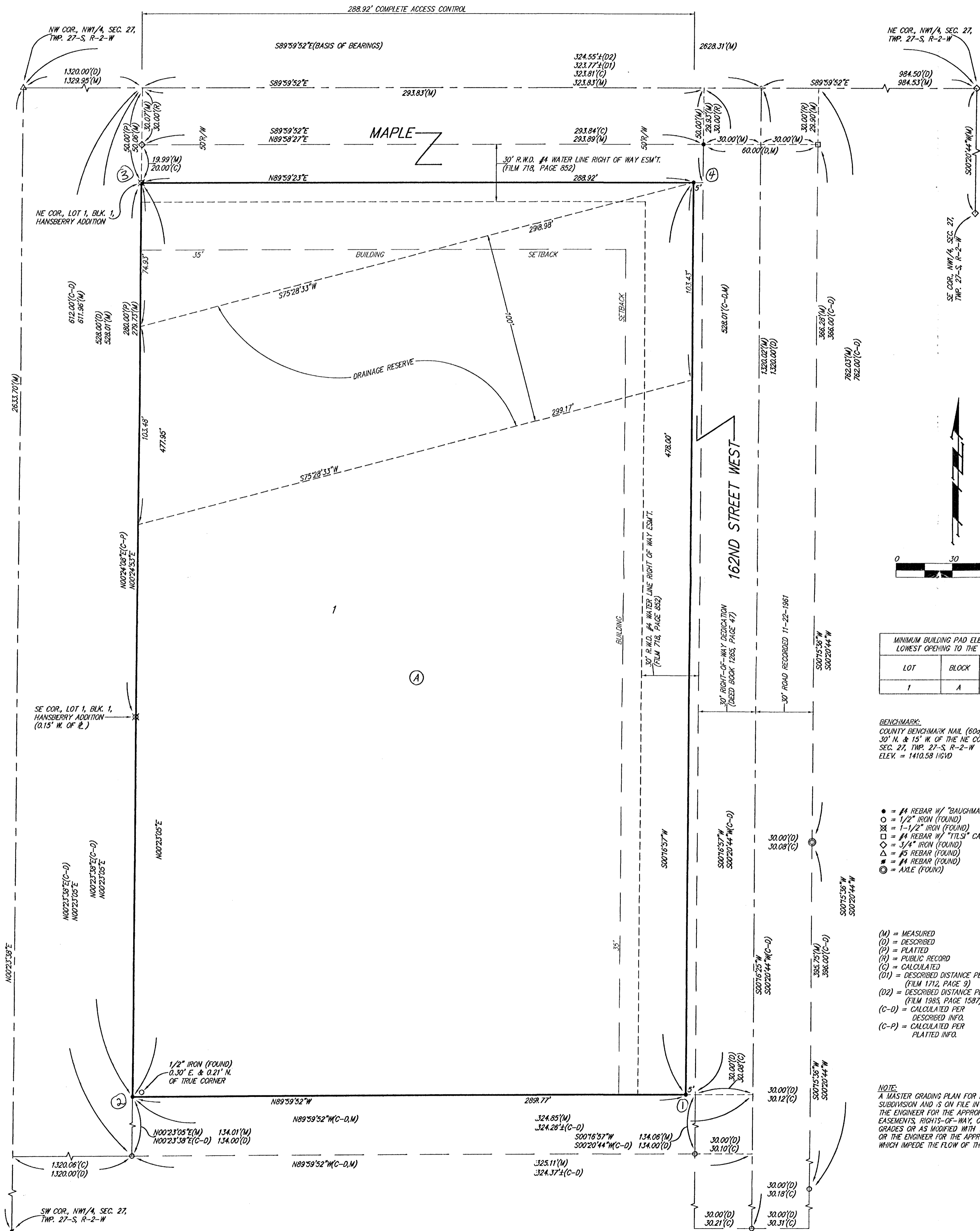


HEARTLAND CHURCH ADDITION SEDGWICK COUNTY, KANSAS



State of Kansas) SS We, Baughman Company, P.A., Surveyors in
Sedgwick County) do hereby certify that we have surveyed and
aforesaid county and state do hereby certify that we have surveyed and
platted "HEARTLAND CHURCH ADDITION", Sedgwick County, Kansas and
that the accompanying plat is a true and correct exhibit of the property
surveyed, described as the north 528 feet of a tract of land situated in
the NW1/4 of Sec. 27, Twp. 27-S, R-2-W of the 6th P.M., Sedgwick
County, Kansas, described as follows: Beginning at a point in the north
line of said NW1/4 984.5 feet west of the NE corner of said 1/4 section;
thence south parallel to the east line of said 1/4 section 1320 feet;
thence west parallel to the north line of said 1/4 section 326.05 feet
more or less to a point 1320 feet east of the west line of the said
1/4 section; thence north to a point in the north line of the said
1/4 section 1320 feet east of the NW corner of said 1/4 section; thence
east 324.55 feet more or less to the point of beginning.

Existing public easements and dedications
being vacated by virtue of K.S.A. 12-512(b).

Baughman Company, P.A.

This plat of "HEARTLAND CHURCH ADDITION",
Sedgwick County, Kansas has been submitted to and approved by the
Wichita-Sedgwick County Metropolitan Area Planning Commission, Wichita,
Kansas.

Dated this _____ day of _____,
Wichita-Sedgwick County Metropolitan Area Planning Commission

_____, Acting Chair
J. D. Michaelis

_____, Secretary
Marvin S. Krout

This plat approved and all dedications
shown hereon accepted by the City Council of the City of Wichita,
Kansas, this _____ day of _____, 2001.

At the direction of the City Council

_____, City Manager
Chris Cherches

_____, City Clerk
Pat Burnett

This plat approved and all dedications
shown hereon accepted by the Board of Commissioners of
Sedgwick County, Kansas, this _____ day of _____, 2001.

_____, Chair
Carolyn McGinn

ATTEST: _____, County Clerk
Don Brace

Reviewed in accordance with K.S.A. 58-2005
on this _____ day of _____, 2001.

_____, Deputy County Surveyor
Tricia L. Robello, L.S. #1246
Sedgwick County, Kansas

Entered on transfer record this _____ day
of _____, 2001.

_____, County Clerk
Don Brace

State of Kansas) SS The foregoing instrument acknowledged before
Sedgwick County) me, this 20th day of NOVEMBER, 2001, by Robert C. Loudermilk,
President of Heartland Church of Christ, Inc., on behalf of the corporation.

JUDITH M. TERRHUNE
Notary Public - State of Kansas
My App't. Expires 11-7-2005

Judith M. Terrhune, Notary Public
JUDITH M. TERRHUNE

My App't. Exp. 11-7-2005

MINIMUM BUILDING PAD ELEVATIONS FOR LOWEST OPENING TO THE STRUCTURES		
LOT	BLOCK	ELEVATION
1	A	1419

BENCHMARK:
COUNTY BENCHMARK NAIL (600) IN HI-LINE POLE,
30' N. & 15' W. OF THE NE COR., NW1/4,
SEC. 27, TWP. 27-S, R-2-W
ELEV. = 1410.58 NGVD

- = #4 REBAR W/ "BAUGHMAN" CAP (SET)
- = 1/2" IRON (FOUND)
- ⊗ = 1-1/2" IRON (FOUND)
- = #4 REBAR W/ "TILTS" CAP (FOUND)
- ◇ = 3/4" IRON (FOUND)
- △ = #5 REBAR (FOUND)
- ▲ = #4 REBAR (FOUND)
- = AXLE (FOUND)

- (M) = MEASURED
- (D) = DESCRIBED
- (P) = PLATTED
- (R) = PUBLIC RECORD
- (C) = CALCULATED
- (D1) = DESCRIBED DISTANCE PER
(FILM 1712, PAGE 9)
- (D2) = DESCRIBED DISTANCE PER
(FILM 1985, PAGE 1587)
- (C-D) = CALCULATED PER
DESCRIBED INFO.
- (C-P) = CALCULATED PER
PLATTED INFO.

NOTE:
A MASTER GRADING PLAN FOR DRAINAGE HAS BEEN DEVELOPED FOR THIS
SUBDIVISION AND IS ON FILE IN THE OFFICE OF THE COUNTY ENGINEER OR
THE ENGINEER FOR THE APPROPRIATE GOVERNING BODY. ALL DRAINAGE
EASEMENTS, RIGHTS-OF-WAY, OR RESERVES SHALL REMAIN AT ESTABLISHED
GRADES OR AS MODIFIED WITH THE APPROVAL OF THE COUNTY ENGINEER
OR THE ENGINEER FOR THE APPROPRIATE GOVERNING BODY. NO OBSTRUCTIONS
WHICH IMPEDE THE FLOW OF THIS DRAINAGE SYSTEM SHALL BE ALLOWED.