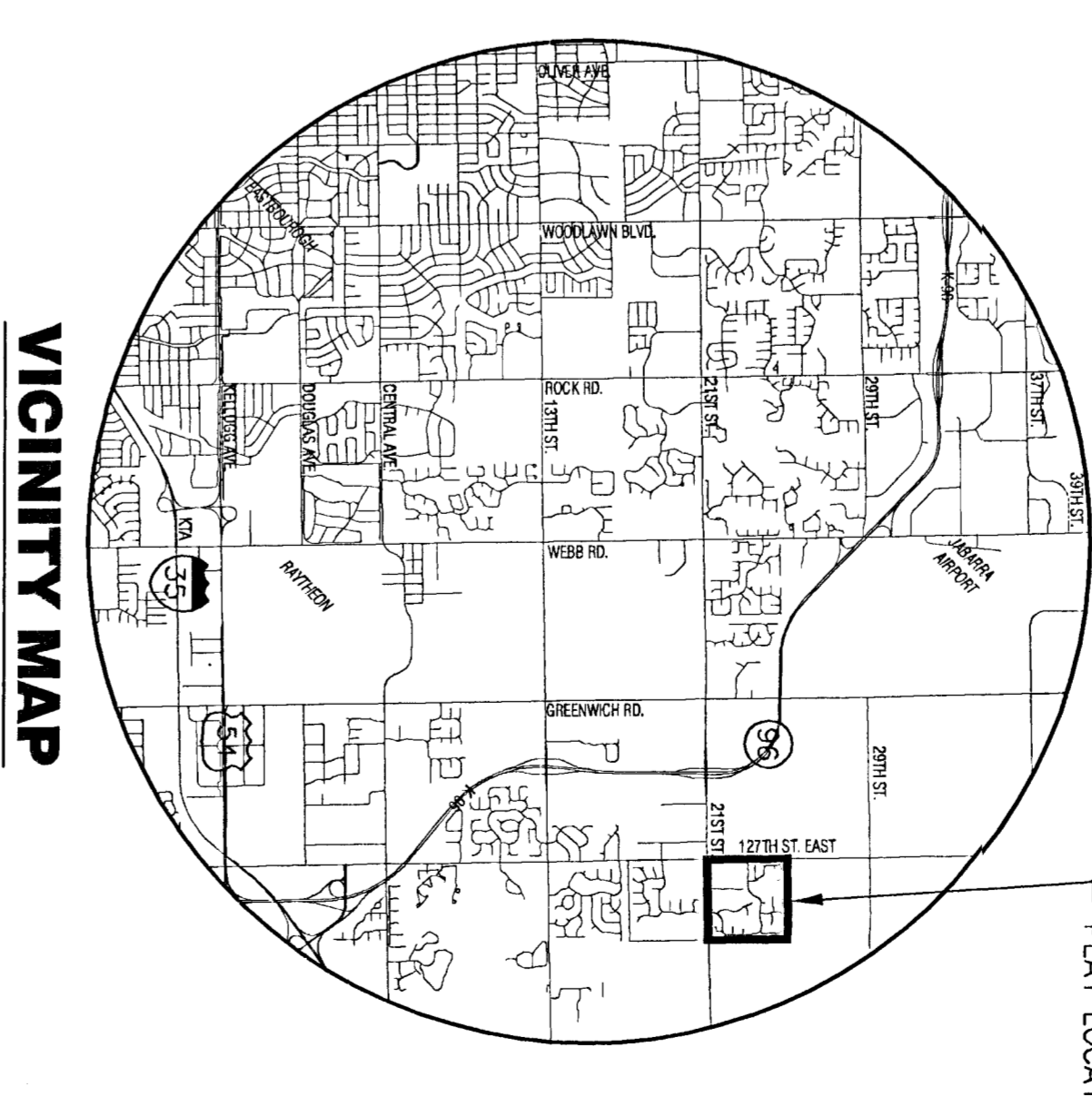
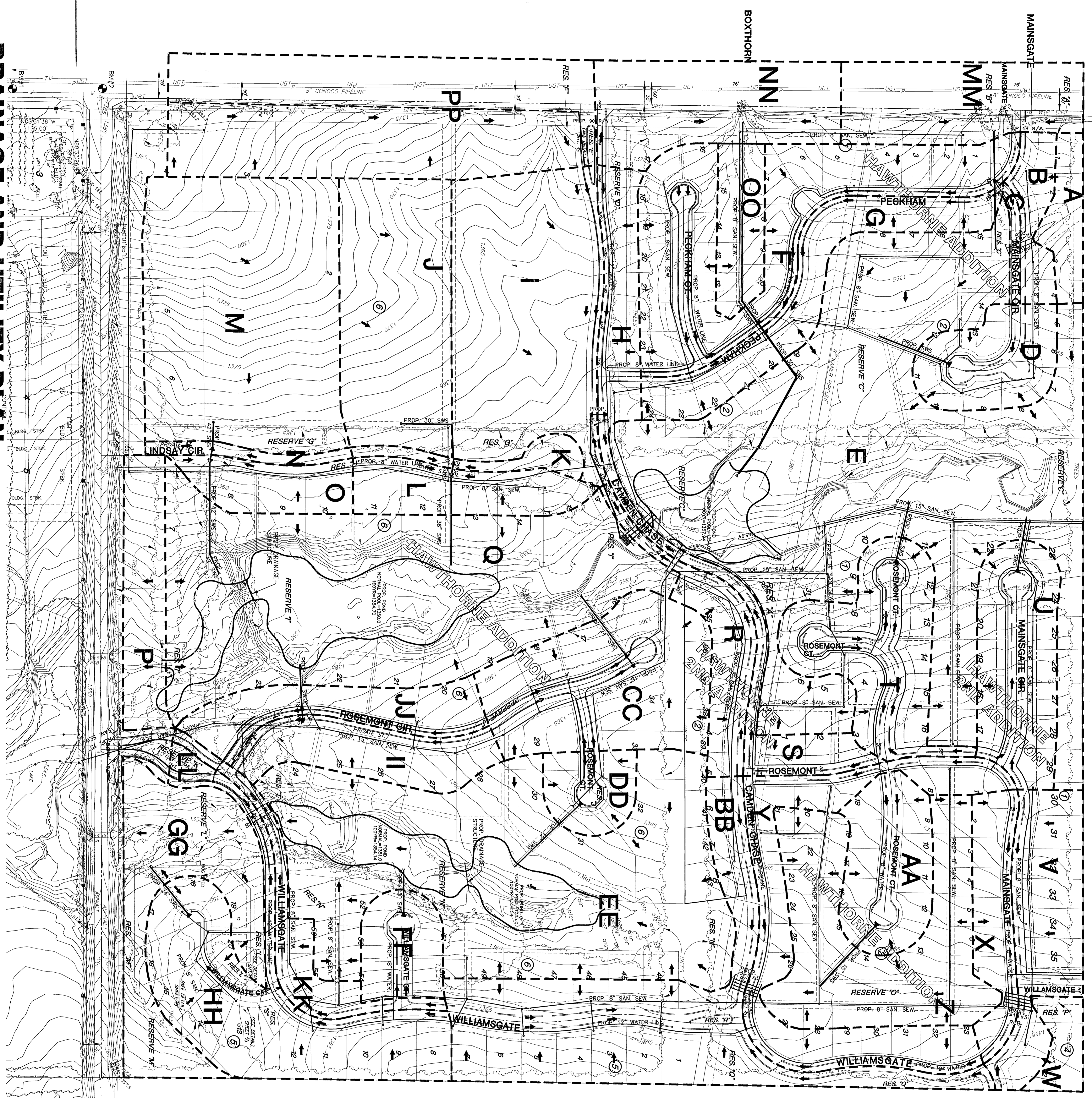


# DRAINAGE AND UTILITY PLAN

## HAWTHORNE & HAWTHORNE 2ND ADDITIONS

OWNERS/DEVELOPER: Twenty-First Growth, L.L.C. 816 Terradyme Andover KS 67002

DATE: JULY 2003



- ### NOTES
- ZONING: Existing Single Family "SF-20" Proposed Single Family "SF-5"
  - RESERVES plotted for:
    - "A", "B", "D", "E", "F", "G", "H" - monuments, landscaping, irrigation, and open space
    - "I", "J", "K", "L", "M" - drainage in designated locations
    - "N", "O", "P" - lakes, floodway, and drainage in designated locations; dog house, pool, playground, monuments, and open space
    - "R" - monuments, landscaping, irrigation, berming, sidewalks, and open space.
  - Reserve "N" & "O" - private streets, drainage, utilities, monuments and open space.
  - Lot minimum pad elevations as indicated on the DRAINAGE PLAN, provided at the time of FINAL PLATTING.
- ### BENCHMARK
- BW#1 60' IN SOUTH LEG OF "H" POLE  
HIGH LINE STRUCTURE, 75' NORTH & BURNINGTON OF NORTHERN BURLINGTON, ILLINOIS.  
ELEV. = 1365.37'
- BW#2 Top of Iron of SW Cor., SW. 1/4, Sec. 2, 127S, R2E, (127th St. E. & 21st St. N.).  
ELEV. = 1385.41' (NOVD)

| MINIMUM PAD ELEVATIONS (LOWEST OPENINGS) |                                | MINIMUM PAD ELEVATIONS (LOWEST OPENINGS) |                                |
|--|--------------------------------|--|--------------------------------|
| LOT                                      | ELEVATION (ELEVATION (FINISH)) | LOT                                      | ELEVATION (ELEVATION (FINISH)) |
| 1  | 1751.7                         | 16                                       | 1661.1                         |
| 2  | 1751.7                         | 17                                       | 1661.1                         |
| 3  | 1751.7                         | 18                                       | 1661.1                         |
| 4  | 1751.7                         | 19                                       | 1661.1                         |
| 5  | 1751.7                         | 20                                       | 1661.1                         |
| 6  | 1751.7                         | 21                                       | 1661.1                         |
| 7  | 1751.7                         | 22                                       | 1661.1                         |
| 8  | 1751.7                         | 23                                       | 1661.1                         |
| 9  | 1751.7                         | 24                                       | 1661.1                         |
| 10                                       | 1751.7                         | 25                                       | 1661.1                         |
| 11                                       | 1751.7                         | 26                                       | 1661.1                         |
| 12                                       | 1751.7                         | 27                                       | 1661.1                         |
| 13                                       | 1751.7                         | 28                                       | 1661.1                         |
| 14                                       | 1751.7                         | 29                                       | 1661.1                         |
| 15                                       | 1751.7                         | 30                                       | 1661.1                         |
| 16                                       | 1751.7                         | 31                                       | 1661.1                         |
| 17                                       | 1751.7                         | 32                                       | 1661.1                         |
| 18                                       | 1751.7                         | 33                                       | 1661.1                         |
| 19                                       | 1751.7                         | 34                                       | 1661.1                         |
| 20                                       | 1751.7                         | 35                                       | 1661.1                         |
| 21                                       | 1751.7                         | 36                                       | 1661.1                         |
| 22                                       | 1751.7                         | 37                                       | 1661.1                         |
| 23                                       | 1751.7                         | 38                                       | 1661.1                         |
| 24                                       | 1751.7                         | 39                                       | 1661.1                         |
| 25                                       | 1751.7                         | 40                                       | 1661.1                         |
| 26                                       | 1751.7                         | 41                                       | 1661.1                         |
| 27                                       | 1751.7                         | 42                                       | 1661.1                         |
| 28                                       | 1751.7                         | 43                                       | 1661.1                         |
| 29                                       | 1751.7                         | 44                                       | 1661.1                         |
| 30                                       | 1751.7                         | 45                                       | 1661.1                         |
| 31                                       | 1751.7                         | 46                                       | 1661.1                         |
| 32                                       | 1751.7                         | 47                                       | 1661.1                         |
| 33                                       | 1751.7                         | 48                                       | 1661.1                         |
| 34                                       | 1751.7                         | 49                                       | 1661.1                         |
| 35                                       | 1751.7                         | 50                                       | 1661.1                         |
| 36                                       | 1751.7                         | 51                                       | 1661.1                         |
| 37                                       | 1751.7                         | 52                                       | 1661.1                         |
| 38                                       | 1751.7                         | 53                                       | 1661.1                         |
| 39                                       | 1751.7                         | 54                                       | 1661.1                         |
| 40                                       | 1751.7                         | 55                                       | 1661.1                         |
| 41                                       | 1751.7                         | 56                                       | 1661.1                         |

### LEGEND

- CONCRETE PIPE & DUCTILE IRON PIPE
- ROBOCON PRESTRESS PIPE & DUCTILE IRON PIPE
- EDGE OF PAVEMENT
- EDGE OF GRASS
- SAVATARY DRAIN MANHOLE
- WATER
- UNDERGROUND ELECTRIC LINE
- OVERHEAD ELECTRIC LINE
- UNDERGROUND FIBER OPTIC CABLE
- HIGH PRESSURE GAS PIPELINE
- SECTION CORNER
- SECTION CORNER
- BENCHMARK

**MKEC ENGINEERING**  
111 N. WEST 8200  
P.O. BOX 1000  
ANDOVER, KS 67002