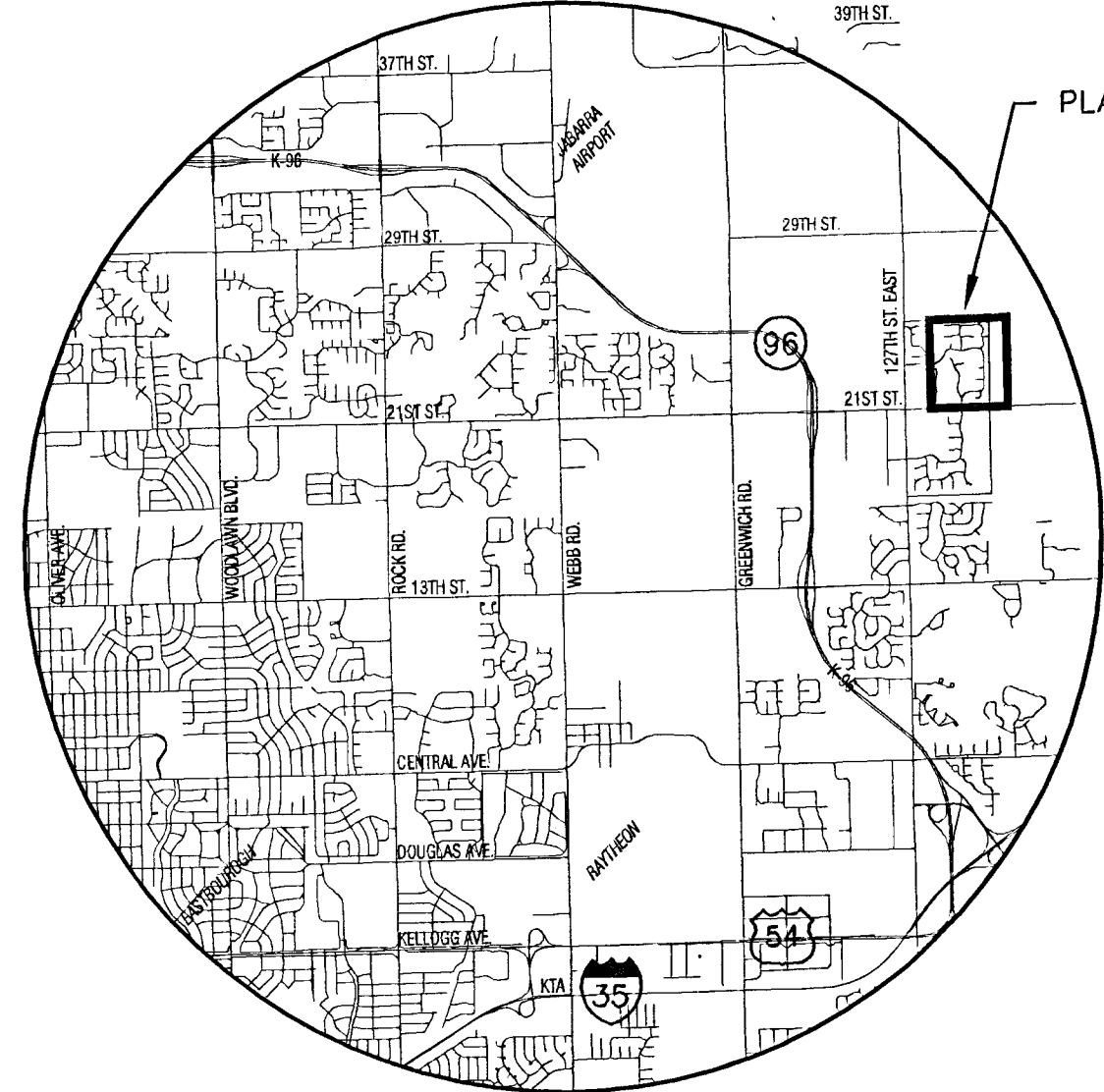
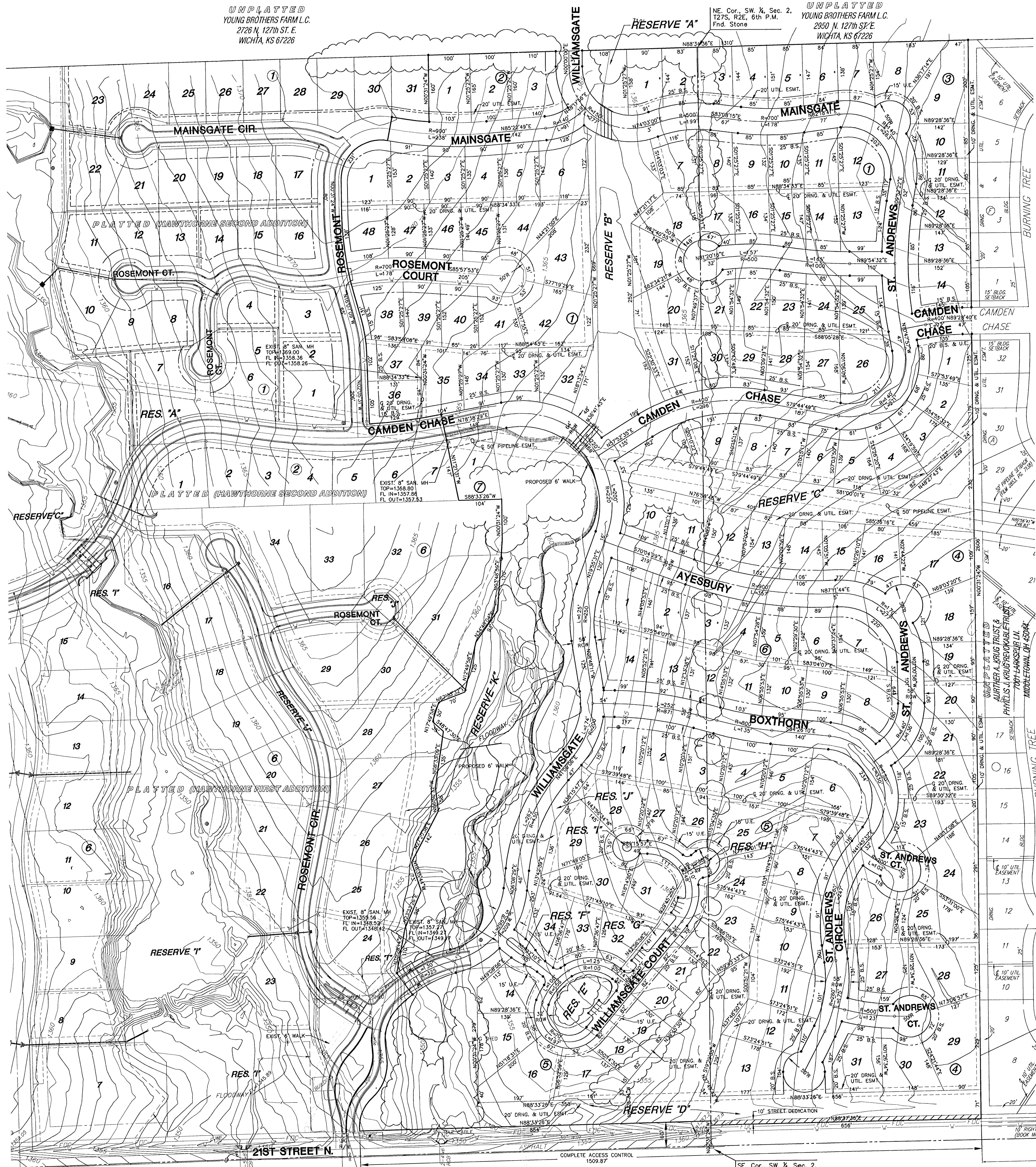


UNPLATTED  
YOUNG BROTHERS FARM L.C.  
2726 N. 127th St. E.  
WICHITA, KS 67226

UNPLATTED  
YOUNG BROTHERS FARM L.C.  
2950 N. 127th St. E.  
WICHITA, KS 67226



VICINITY MAP

**LEGEND**

- CONFIFEROUS TREE & DIAMETER	- TELEPHONE RISER
- DECIDUOUS TREE & DIAMETER	- INLET
- SIGN	- STORM SEWER PIPE
- BUSH	- WATER LINE
- EDGE OF TREES	- SANITARY SEWER LINE
- FENCE	- GAS LINE
- SANITARY SEWER MANHOLE	- TELEPHONE LINE
- GAS METER	- UNDERGROUND ELECTRIC LINE
- POLE	- OVERHEAD TELEPHONE
- GATE	- OVERHEAD ELECTRIC
- WALL	- UNDERGROUND FIBER OPTIC CABLE
- LIGHT POLE	- HIGH PRESSURE GAS PIPELINE
- FIRE HYDRANT	- B.S. = BUILDING SETBACK
- WATER VALVE	- U.E. = UTILITY EASEMENT
- WATER METER	- (M) = MEASURED DIMENSION
- POWER POLE AND GUY ANCHOR	- (S) = STREET DEDICATION
- SECTION CORNER MONUMENT FOUND	- (V) = STREET VACATION
- FOUND PROPERTY CORNER REBAR	

PLATTED (REDS COVE ADDITION)  
21/127 L.L.C.  
8100 E. 22nd St. N.  
SUITE #1000, WICHITA, KS 67226

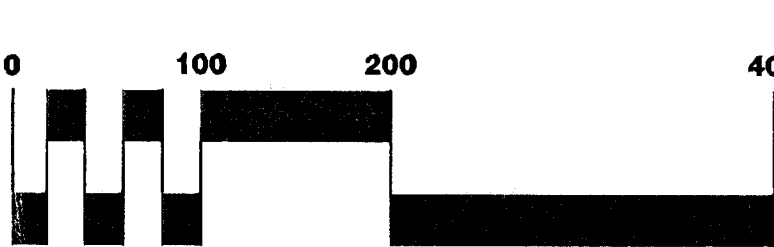
UNPLATTED (PROPOSED REDS COVE THIRD ADDITION)  
21/127 L.L.C.  
8100 E. 22nd St. N.  
SUITE #1000, WICHITA, KS 67226

**NOTES**

- ZONING: Existing Single Family "SF-20"  
Proposed Single Family "SF-5"
- RESERVES platted for:
  - "A" lakes, floodway, drainage, landscaping, irrigation and open space
  - "B" lakes, floodway, drainage, landscaping, irrigation and open space
  - "C" walks, berming, drainage, landscaping, irrigation and open space
  - "D" lakes, floodway, monuments, walks, berming, drainage, landscaping, irrigation and open space
  - "E" walks, playground, landscaping, irrigation and open space
  - "F" monuments, landscaping, irrigation and open space
  - "G" walks, drainage, landscaping, irrigation and open space
  - "H" landscaping, irrigation and open space
  - "I" landscaping, irrigation and open space
  - "J" walks, berming, drainage, landscaping, irrigation and open space
  - "K" lakes, floodway, playground, walks, drainage, landscaping, irrigation and open space
- Lot minimum pad elevations as indicated on the DRAINAGE PLAN, provided at the time of FINAL PLATTING.

**BENCHMARKS**

- BM#1 Square cut SW. corner signal light pole base NE. corner Webb and 13th.  
ELEV. = 185.945 (City Datum)  
1373.345' NGVD
- BM#2 Top of iron at SW. Cor., SW. 1/4, Sec. 2, T27S, R2E, (127th St. E. & 21st St. N.).  
ELEV. = 198.01 (CITY DATUM)  
1385.41 NGVD



SCALE: 1" = 100'

# PRELIMINARY PLAT HAWTHORNE THIRD ADDITION

OWNERS/DEVELOPER: Twenty-First Growth, L.L.C. 816 Terradyne Andover KS 67002

DATE: MARCH, 2004



**MKEC**  
ENGINEERING CONSULTANTS  
411 N. WEBB ROAD  
WICHITA, KS. 67208  
316-684-9900