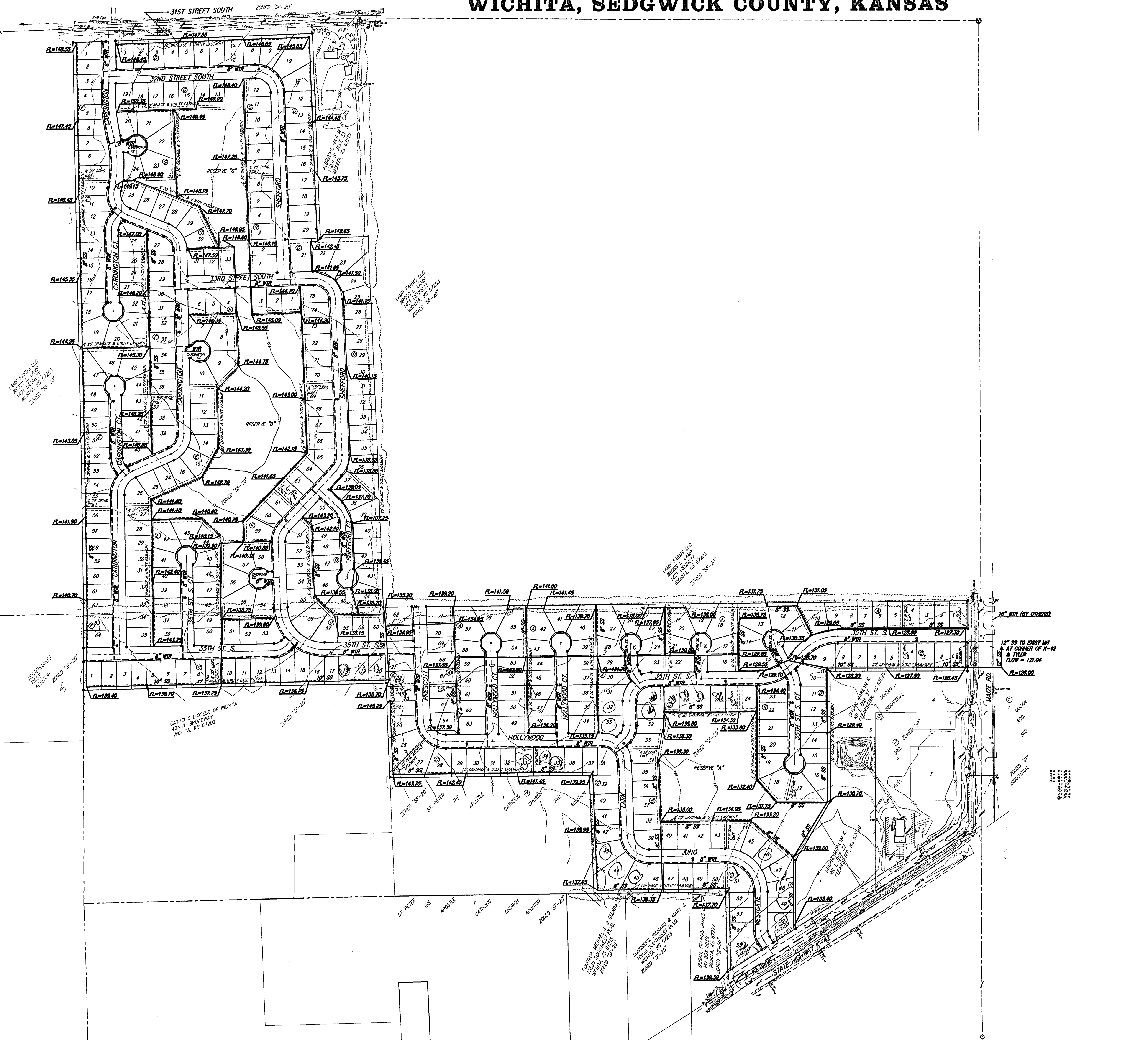
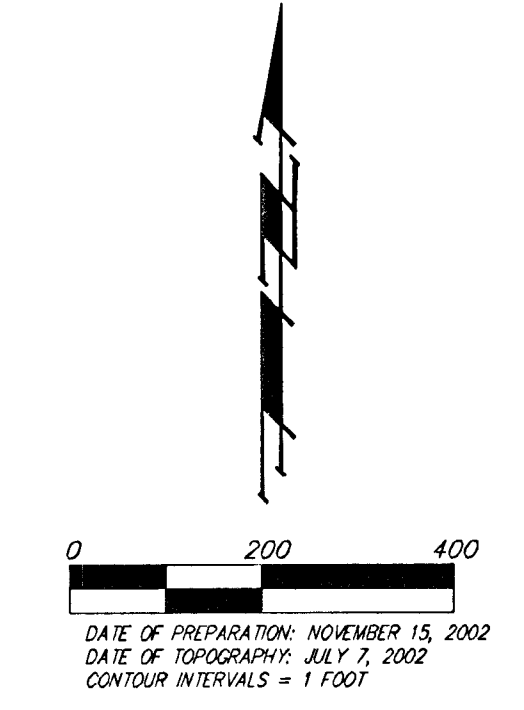


UTILITY PLAN

HARVEST RIDGE ADDITION

WICHITA, SEDGWICK COUNTY, KANSAS

HEIKEN, RAYMOND C. & VENDA M. TRUSTS
11600 W. 31ST. ST. S.
WICHITA, KS 67215



- ⊕ = #4 REBAR W/ "BAUGHMAN" CAP (FOUND)
- ⊙ = #4 REBAR W/ "BAUGHMAN" CAP (SET)
- ⊗ = #4 REBAR W/ "ANDERSON" CAP (FOUND)
- ⊗ = 1" IRON (FOUND)
- ⊙ = 3/4" IRON (FOUND)
- ⊗ = 2"x4" NAIL & SHIMMER IN STUMP (FOUND)
- ⊗ = BOLT (FOUND)
- ⊙ = #4 REBAR W/ "TILS" CAP (FOUND)
- ⊙ = #4 REBAR (FOUND)

- ⊙ = Cleanout
- EB ⊕ = Electric Box
- FH ⊙ = Fire Hydrant
- GM ⊙ = Gas Meter
- GP ⊙ = Guard Post (Ballard)
- QA ⊕ = Qty Anchor
- LP ⊙ = Light Pole
- MB ⊙ = Mail Box
- PP ⊙ = Power Pole
- SP ⊕ = Signal Pole
- Sign ⊕ = Sign
- SSM ⊙ = Sanitary Sewer Manhole
- SWB Ped ⊙ = Southwestern Bell Pedestal
- T ⊙ = Tree
- TB ⊙ = Traffic Box
- Wd ⊙ = Cased Well
- WM ⊙ = Water Meter
- WSP ⊕ = Transformer

