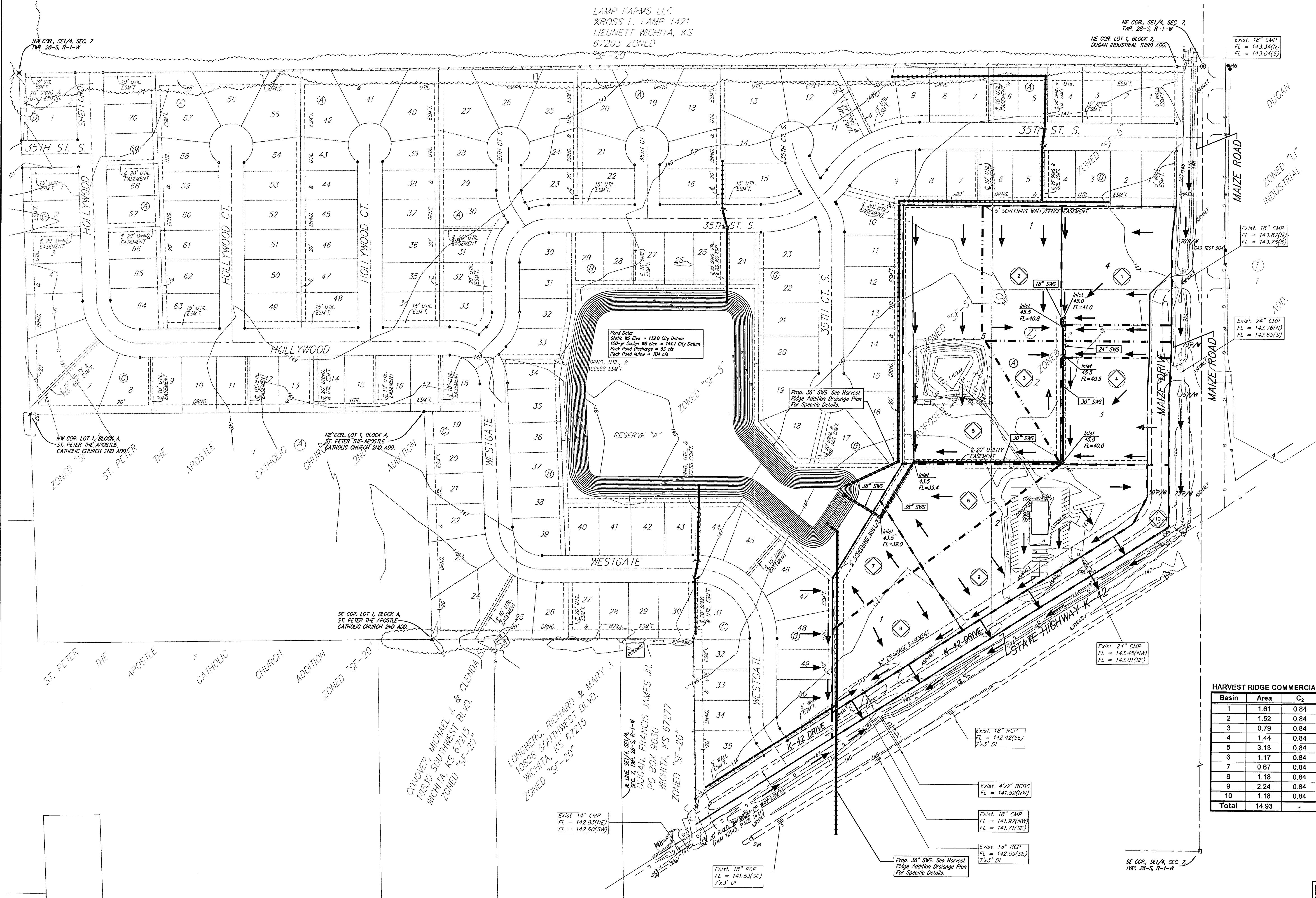


# DRAINAGE PLAN

## HARVEST RIDGE COMMERCIAL ADDITION

### WICHITA, SEDGWICK COUNTY, KANSAS

LAMP FARMS LLC  
 8805 S. LAMP 1421  
 LIEUNETT WICHITA, KS  
 67203 ZONED  
 SF-20



0 100 200

DATE OF PREPARATION: 26 AUGUST 2003  
 DATE OF TOPOGRAPHY: 07 JULY 2003  
 CONTOUR INTERVALS = 1 FOOT

**BENCHMARK:**  
 Railroad spike 1st power pole west of N1/4 Cor.  
 Sec. 7, Twp. 28-S, R-1-W, of the 6th P.M.  
 Elev = 1341.83(City Datum)  
 Elev = 1341.83(NGVD29)

Railroad spike 3rd power pole west of N1/4 Cor.  
 Sec. 7, Twp. 28-S, R-1-W, of the 6th P.M.  
 Elev = 1344.39(City Datum)  
 Elev = 1344.39(NGVD29)

LOT		ELEVATION	
LOT	BLOCK	CITY DATUM	NGVD29
1,2,5	A	145.1	1332.5

Pond Data:  
 Static WS Elev = 1380 City Datum  
 100-yr Design WS Elev = 1441 City Datum  
 Peak Pond Discharge = 53 cfs  
 Peak Pond Inflow = 704 cfs

Prop. 36" SWS. See Harvest Ridge Addition Drainage Plan For Specific Details.

**HARVEST RIDGE COMMERCIAL ADDITION -- Rational Method -- Q = CIA -- tc = 15 min.**

Basin	Area	C <sub>2</sub>	C <sub>s</sub>	C <sub>100</sub>	Q <sub>2</sub> (cfs)	Q <sub>s</sub> (cfs)	Q <sub>100</sub> (cfs)
1	1.61	0.84	0.85	0.91	5.2	6.2	10.8
2	1.52	0.84	0.85	0.91	4.9	5.9	10.2
3	0.79	0.84	0.85	0.91	2.5	3.1	5.3
4	1.44	0.84	0.85	0.91	4.6	5.6	9.7
5	3.13	0.84	0.85	0.91	10.1	12.1	21.0
6	1.17	0.84	0.85	0.91	3.8	4.5	7.8
7	0.87	0.84	0.85	0.91	2.2	2.6	4.5
8	1.18	0.84	0.85	0.91	3.8	4.6	7.9
9	2.24	0.84	0.85	0.91	7.2	8.7	15.0
10	1.18	0.84	0.85	0.91	3.8	4.6	7.9
<b>Total</b>	<b>14.93</b>	-	-	-	<b>48.0</b>	<b>57.9</b>	<b>100.1</b>