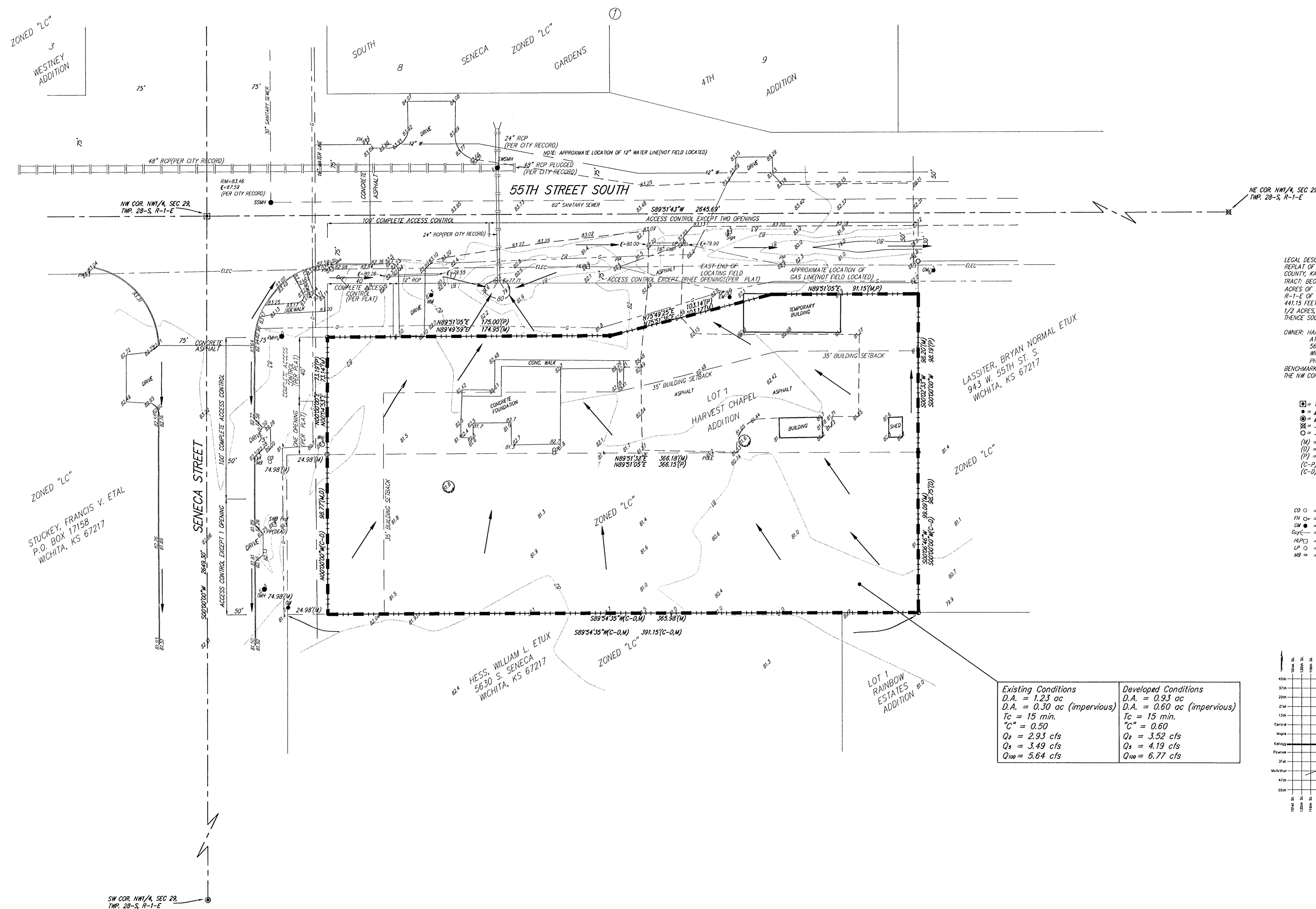
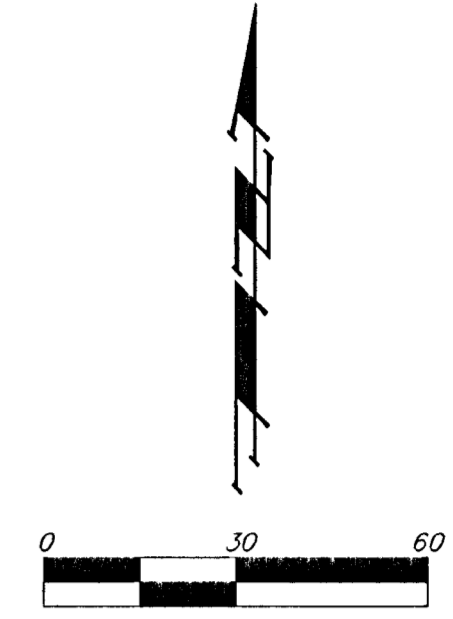


# DRAINAGE CONCEPT

## HARVEST CHAPEL 2ND ADDITION

### WICHITA, SEDGWICK COUNTY, KANSAS



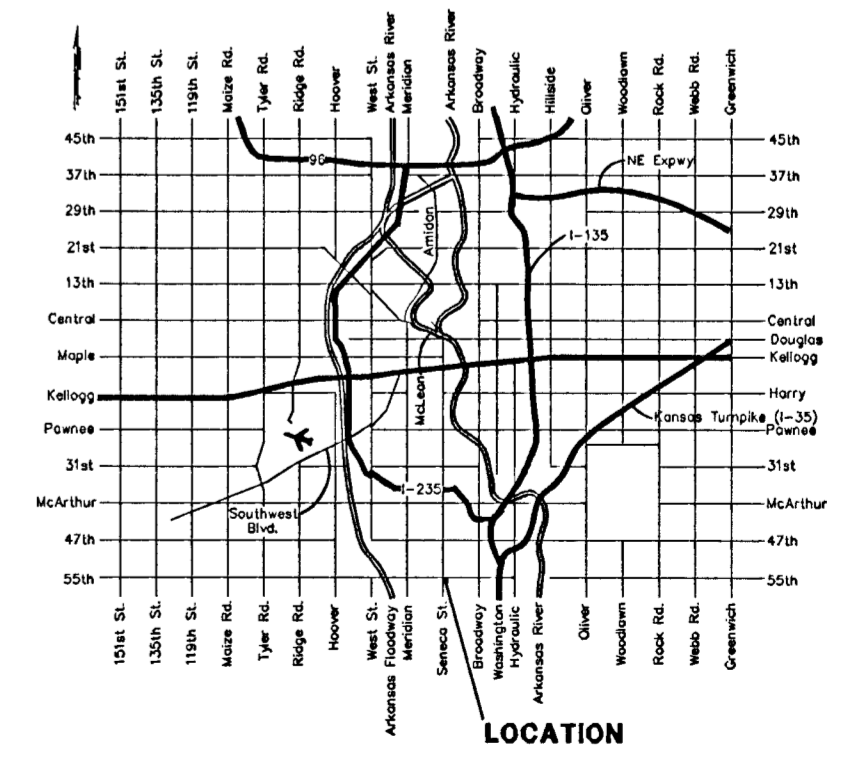
**LEGAL DESCRIPTION:**  
 REPLAT OF LOT 1, HARVEST CHAPEL ADDITION, WICHITA, SEDGWICK COUNTY, KANSAS; TOGETHER WITH THE FOLLOWING DESCRIBED TRACTS: BEGINNING AT THE SW CORNER OF THE NORTH 7 1/2 ACRES OF THE NW 1/4 OF SEC. 29, TWP. 28-S, R-1-E OF THE 6TH P.M., SEDGWICK COUNTY, KANSAS THENCE EAST 441.15 FEET PARALLEL WITH THE SOUTH LINE OF THE AFORESAID 7 1/2 ACRES; THENCE NORTH 98.75 FEET; THENCE WEST 441.15 FEET; THENCE SOUTH 98.75 FEET TO THE POINT OF BEGINNING.

**OWNER:** HARVEST CHAPEL CHURCH, INC.  
 ATTN: STEVE FISHER  
 5600 S. SENECA  
 WICHITA, KANSAS 67217  
 PH. (316) 261-1111  
**BENCHMARK:** COW BENCH LOCATED 66' WEST & 49.4' NORTH OF THE NW CORNER OF 55TH & SENECA.

- = 1/3" IRON IN THIMBLE (FOUND)
- = #4 REBAR W/ "BAUGHMAN" CAP (SET)
- = #5 REBAR (FOUND)
- ⊗ = 3/4" IRON IN THIMBLE (FOUND)
- = 3/4" IRON (FOUND)
- (M) = MEASURED
- (D) = DESCRIBED
- (P) = PLATTED
- (C-P) = CALCULATED PER PLATTED INFO.
- (C-D) = CALCULATED PER DESCRIBED INFO.

- CO = Cleanout
- PH = Fire Hydrant
- GM = Gas Meter
- GA = Guy Anchor
- HLP = High Line Pole
- LP = Light Pole
- MB = Mail Box
- PP = Power Pole
- SP = Signal Pole
- SN = Sign
- SSM = Sanitary Sewer Manhole
- SSM 24" = Southwestern Bell Pedestal
- SSM 36" = Stormwater Sewer Manhole
- TM = Traffic Manhole
- WC = Cased Well

| Existing Conditions         | Developed Conditions        |
|-----------------------------|-----------------------------|
| D.A. = 1.23 ac              | D.A. = 0.93 ac              |
| D.A. = 0.30 ac (impervious) | D.A. = 0.60 ac (impervious) |
| T <sub>c</sub> = 15 min.    | T <sub>c</sub> = 15 min.    |
| C <sub>s</sub> = 0.50       | C <sub>s</sub> = 0.60       |
| Q <sub>2</sub> = 2.93 cfs   | Q <sub>2</sub> = 3.52 cfs   |
| Q <sub>5</sub> = 3.49 cfs   | Q <sub>5</sub> = 4.19 cfs   |
| Q <sub>100</sub> = 5.64 cfs | Q <sub>100</sub> = 6.77 cfs |



ZONED "LC"  
 3  
 WESTNEY  
 ADDITION

ZONED "LC"  
 STUCKEY, FRANCIS V. ETAL  
 P.O. BOX 1715B  
 WICHITA, KS 67217

HESS, WILLIAM L. ETUX  
 5630 S. SENECA  
 WICHITA, KS 67217

LASSITER, BRYAN NORMAL ETUX  
 943 W. 55TH ST. S.  
 WICHITA, KS 67217

LOT 1  
 RAINBOW  
 ESTATES  
 ADDITION

15 NOVEMBER 1999

**BAUGHMAN COMPANY P. A.**  
 ENGINEERING, SURVEYING, & PLANNING  
 316-262-7271 • 315 ELLIS • WICHITA, KANSAS 67211  
 P:\WORK\HARVEST2P.DWG-SC