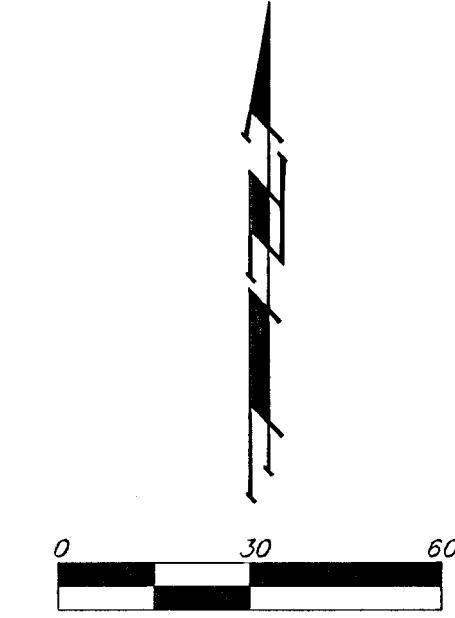
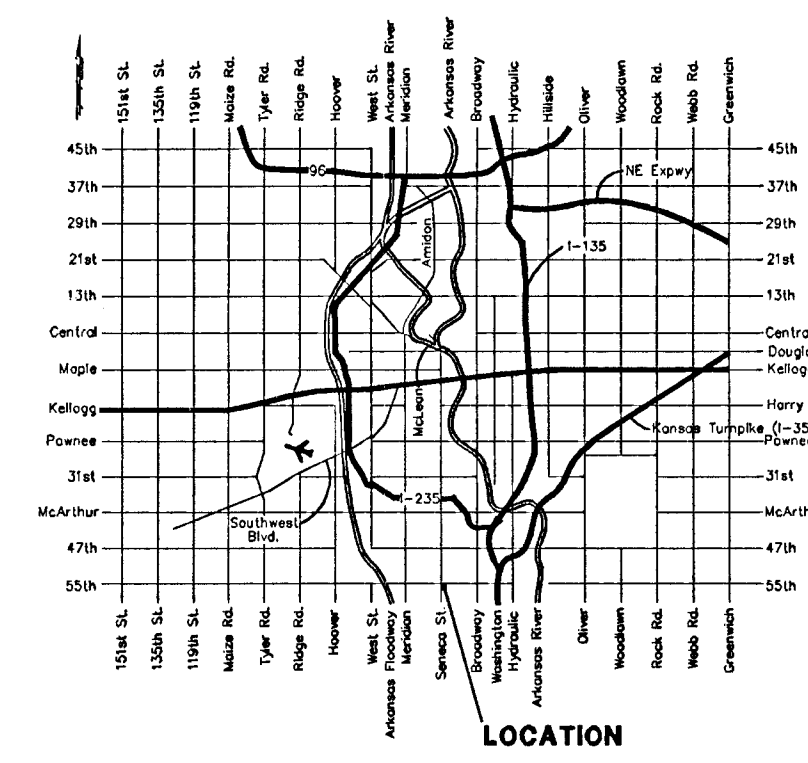
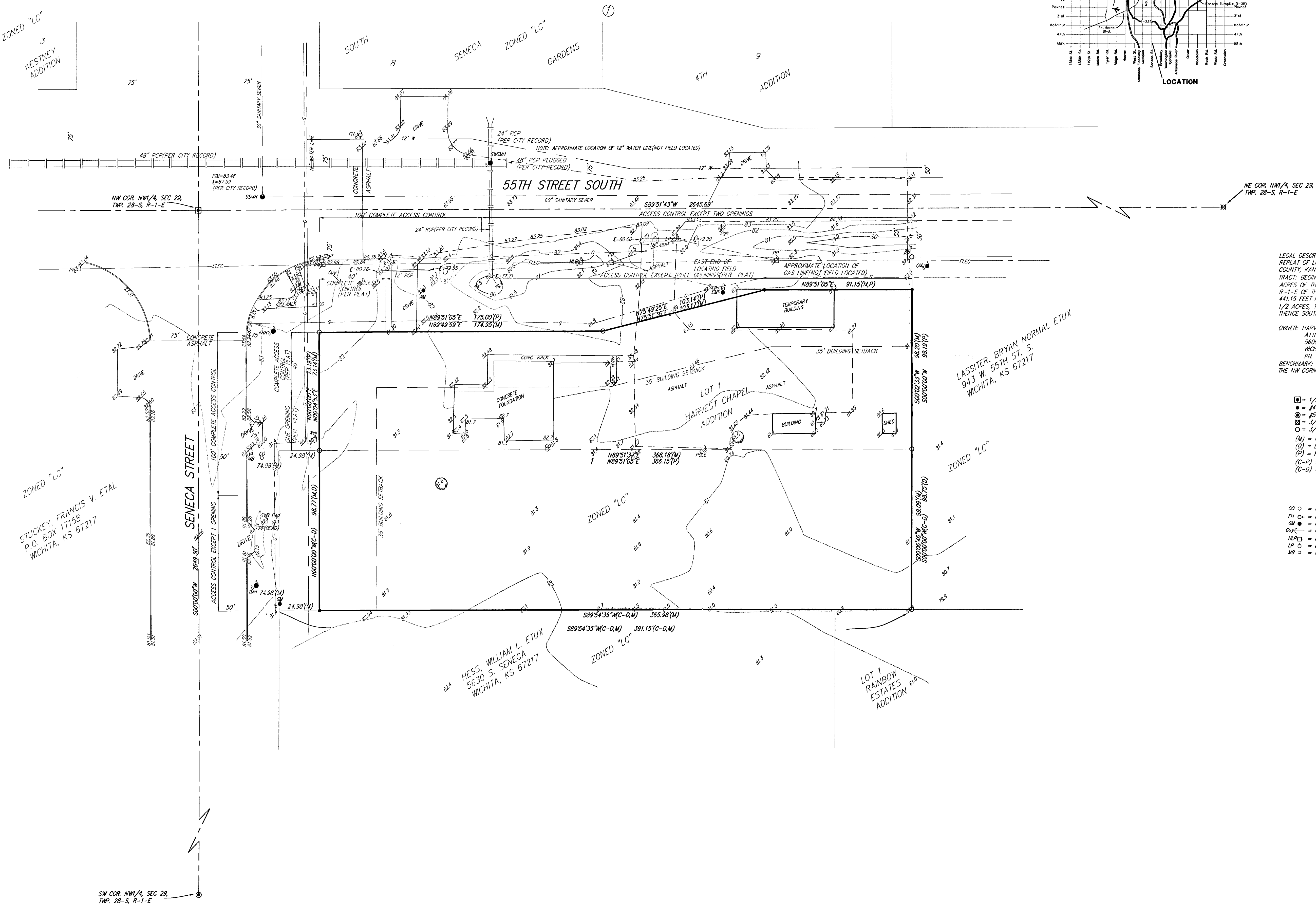


PRELIMINARY PLAT
HARVEST CHAPEL 2ND ADDITION
 WICHITA, SEDGWICK COUNTY, KANSAS



ZONED "LC"
 WESTNEY
 ADDITION



LEGAL DESCRIPTION:
 REPLAT OF LOT 1, HARVEST CHAPEL ADDITION, WICHITA, SEDGWICK COUNTY, KANSAS, TOGETHER WITH THE FOLLOWING DESCRIBED TRACT: BEGINNING AT THE SW CORNER OF THE NORTH 7 1/2 ACRES OF THE NW 1/4 OF THE NW 1/4 OF SEC. 29, TWP. 28-S, R-1-E OF THE 6TH P.M., SEDGWICK COUNTY, KANSAS THENCE EAST 441.15 FEET PARALLEL WITH THE SOUTH LINE OF THE AFORESAID 7 1/2 ACRES, THENCE NORTH 98.75 FEET, THENCE WEST 441.15 FEET, THENCE SOUTH 98.75 FEET TO THE POINT OF BEGINNING.

OWNER: HARVEST CHAPEL CHURCH, INC.
 ATTN: STEVE FISHER
 5600 S. SENECA
 WICHITA, KANSAS 67217
 P.M. (316)

BENCHMARK: CON BENCH LOCATED 66' WEST & 49.4' NORTH OF THE NW CORNER OF 55TH & SENECA.

- = 1/3" IRON IN THIMBLE (FOUND)
- = #4 REBAR W/ "BAUGHMAN" CAP (SET)
- ⊙ = #5 REBAR (FOUND)
- ⊗ = 3/4" IRON IN THIMBLE (FOUND)
- = 1/4" IRON (FOUND)
- (M) = MEASURED
- (D) = DESCRIBED
- (P) = PLATTED
- (C-P) = CALCULATED PER PLATTED INFO.
- (C-D) = CALCULATED PER DESCRIBED INFO.

- CO ○ = Cleanout
- FH ○ = Fire Hydrant
- GM ○ = Gas Meter
- GM C = Guy Anchor
- HL □ = High Line Pole
- LP ○ = Light Pole
- MB □ = Mail Box
- PP □ = Power Pole
- SP □ = Signal Pole
- Sign □ = Sign
- SSMH ● = Sanitary Sewer Manhole
- SWB Ped □ = Southwestern Bell Pedestal
- SWSMH ● = Stormwater Sewer Manhole
- T.M. ● = Traffic Manhole
- WEL ○ = Cased Well

ZONED "LC"
 STUCKEY, FRANCIS V. ETAL
 P.O. BOX 17158
 WICHITA, KS 67217

HESS, WILLIAM L. ETUX
 5630 S. SENECA
 WICHITA, KS 67217

LASSITER, BRYAN NORMAL ETUX
 943 W. 55TH ST. S.
 WICHITA, KS 67217

LOT 1
 RAINBOW
 ESTATES
 ADDITION

SW COR. NW 1/4, SEC. 29,
 TWP. 28-S, R-1-E

15 NOVEMBER 1999