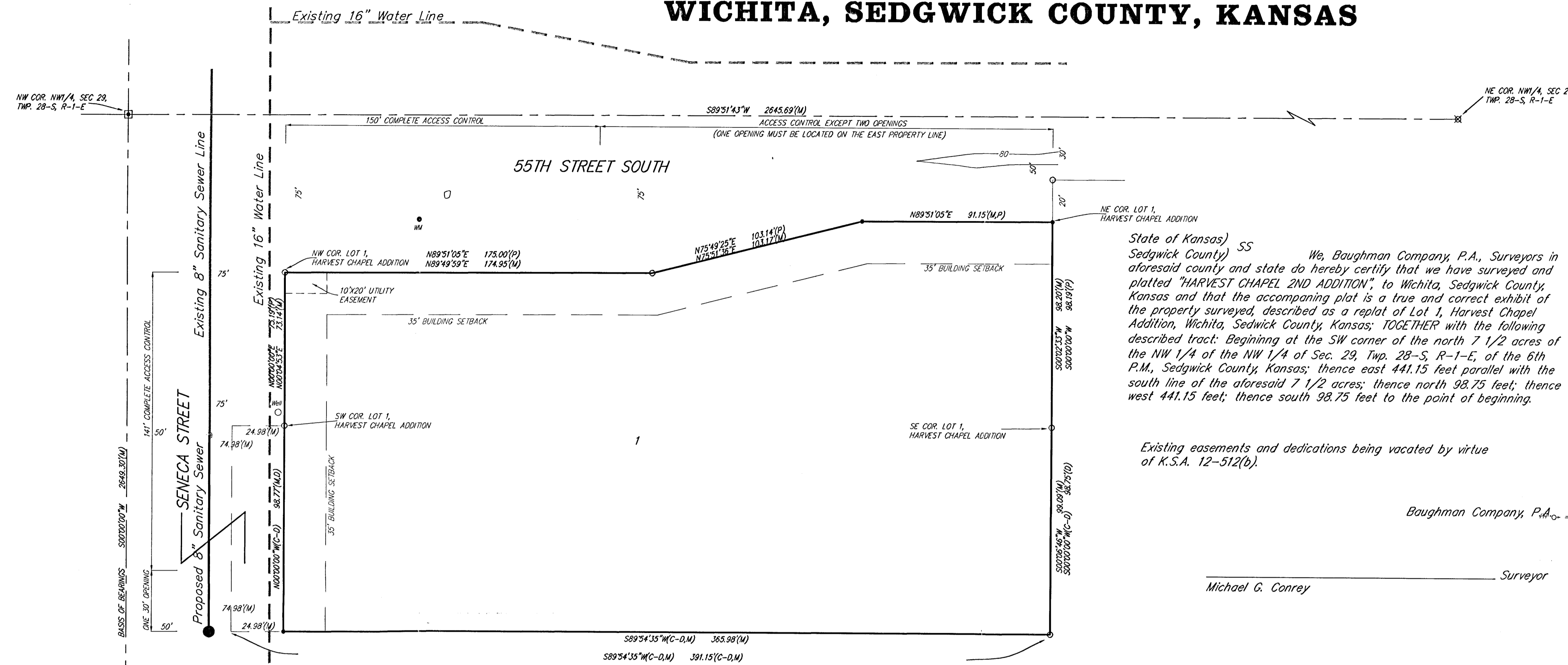


UTILITY PLAN

HARVEST CHAPEL 2ND ADDITION

WICHITA, SEDGWICK COUNTY, KANSAS

This plat of "HARVEST CHAPEL CHURCH 2ND ADDITION", Wichita, Sedgwick County, Kansas has been submitted to and approved by the Wichita-Sedgwick County Metropolitan Area Planning Commission, Wichita, Kansas.
 Dated this _____ day of _____, 2000.
 Wichita-Sedgwick County Metropolitan Area Planning Commission



State of Kansas) SS
 Sedgwick County) We, Baughman Company, P.A., Surveyors in aforesaid county and state do hereby certify that we have surveyed and platted "HARVEST CHAPEL 2ND ADDITION", to Wichita, Sedgwick County, Kansas and that the accompanying plat is a true and correct exhibit of the property surveyed, described as a replat of Lot 1, Harvest Chapel Addition, Wichita, Sedgwick County, Kansas; TOGETHER with the following described tract: Beginning at the SW corner of the north 7 1/2 acres of the NW 1/4 of the NW 1/4 of Sec. 29, Twp. 28-S, R-1-E, of the 6th P.M., Sedgwick County, Kansas; thence east 441.15 feet parallel with the south line of the aforesaid 7 1/2 acres; thence north 98.75 feet; thence west 441.15 feet; thence south 98.75 feet to the point of beginning.

Existing easements and dedications being vacated by virtue of K.S.A. 12-512(b).

Baughman Company, P.A. = Fire Hydrant
 Michael G. Conroy Surveyor

Francis S. Garofalo Chairman
 Marvin S. Krout Secretary

This plat approved and all dedications shown hereon accepted by the City Council of the City of Wichita, Kansas, this _____ day of _____, 2000.

Bob Knight Mayor
 Pat Burnett City Clerk

Reviewed in accordance with K.S.A. 58-2005 on this _____ day of _____, 2000.

Tricia L. Robello, L.S. #1246
 Deputy County Surveyor
 Sedgwick County, Kansas

Entered on transfer record this _____ day of _____, 2000.

James Alford County Clerk

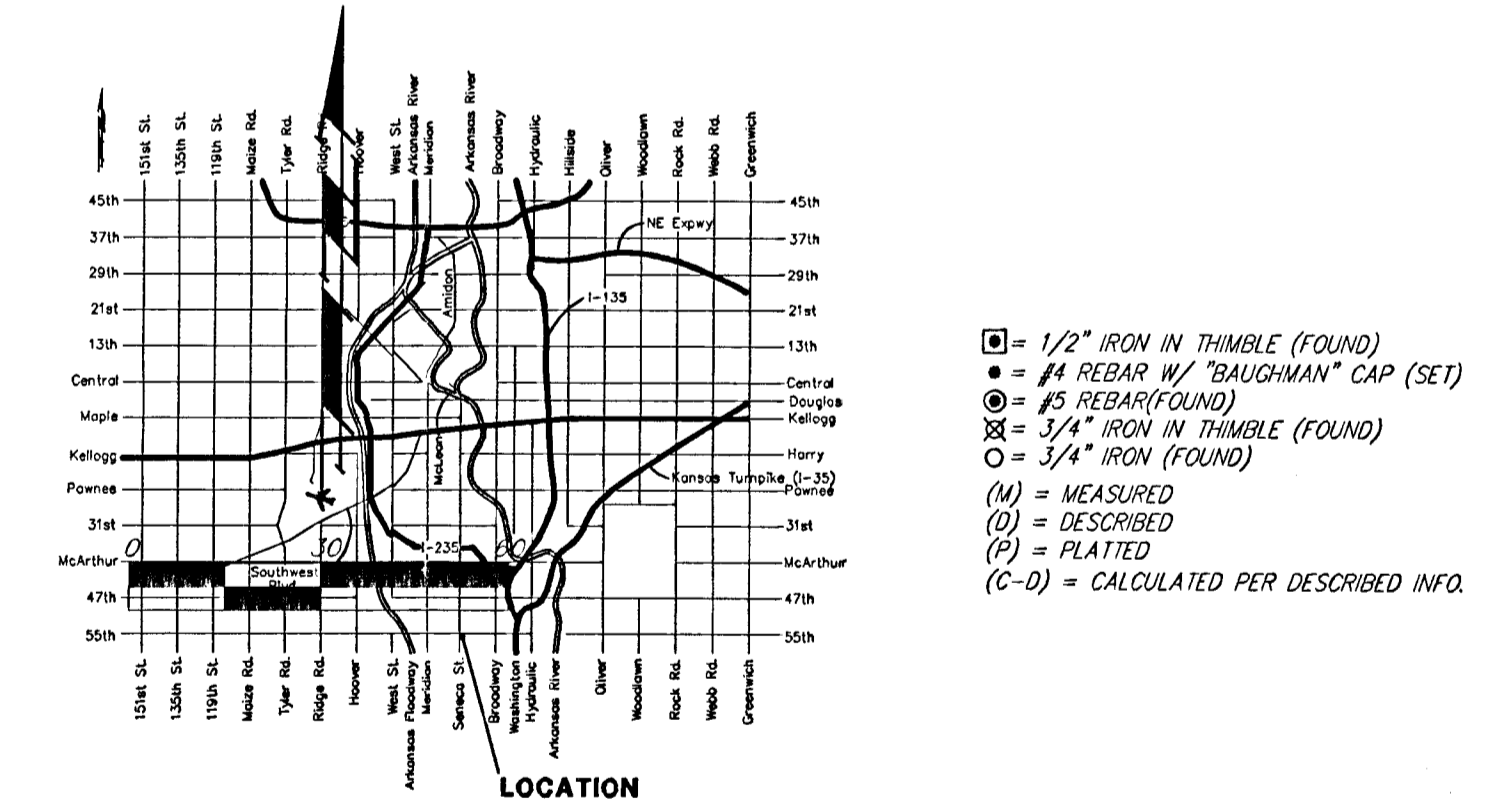
State of Kansas) SS
 Sedgwick County) This is to certify that this plat has been filed for record in the office of the Register of Deeds, this _____ day of _____, 2000, at _____ o'clock _____ M., and is duly recorded.

Bill Meek Register of Deeds
 Linda Kizzire Deputy

State of Kansas) SS
 Sedgwick County) The foregoing instrument acknowledged before me, this _____ day of _____, 2000, by Steve Fisher, President of Harvest Chapel Church, Inc., on behalf of the corporation.

Notary Public

My App't. Exp. _____



Legend:
 - - - - - Existing Water Line
 - - - - - Proposed Sanitary Sewer