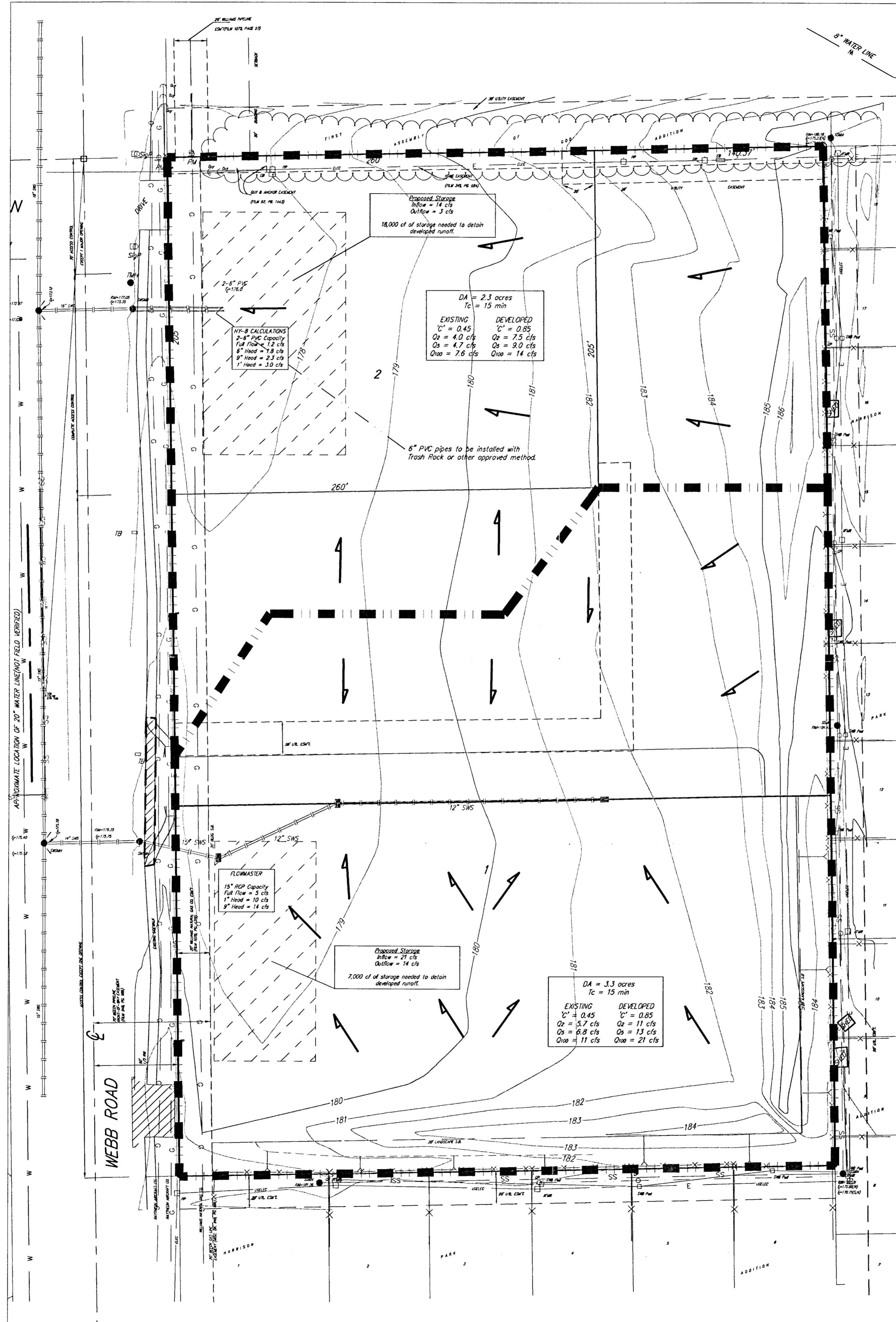


REVISED DRAINAGE PLAN
HARRISON PARK 3RD ADDITION
 WICHITA, SEDGWICK COUNTY, KANSAS



NOTE
 All runoff (100-yr) must leave the developed site through the existing SWS system located along the west line.

The original (approved) drainage plan shows 25,000 cf of detention storage needed. As shown, 25,000 cf is still required.

DETECTION
 Site produces 18.6 cfs of existing runoff. Upon development, the site will limit runoff to 4 cfs to the north existing inlet, and 14 cfs to the south inlet, as shown. Detention can be obtained in parking lot, underground storage, or other approved methods.



Scale 1:40