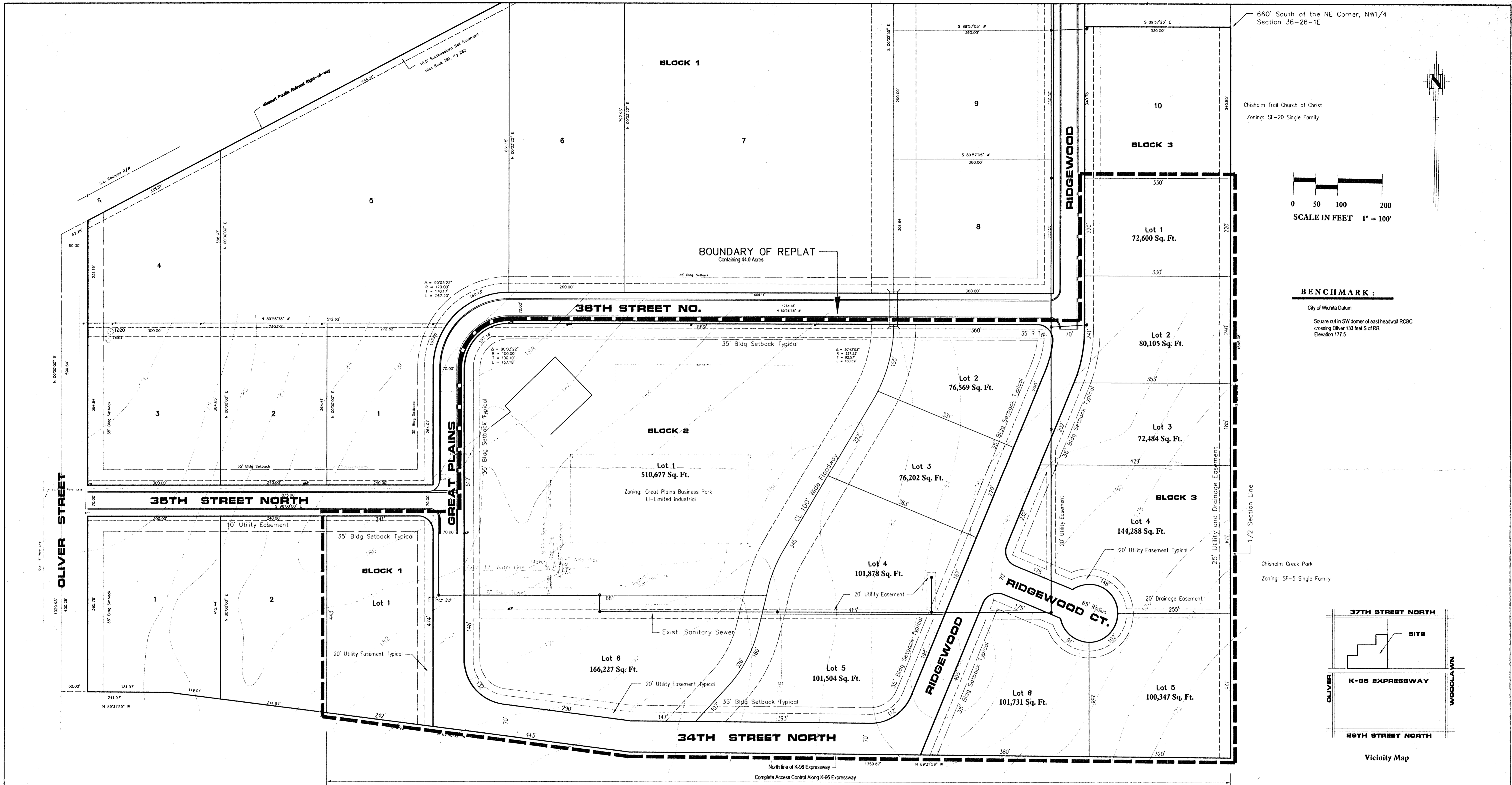
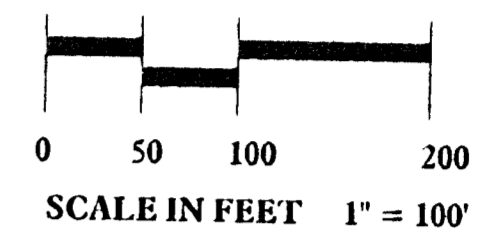


6: \APPS\DATA\1674\Pre1-Plat.dwg Fri, Feb 01 11:05:52 2002 Kerry E. Hill P.E. - POE & ASSOC. OF KANSAS



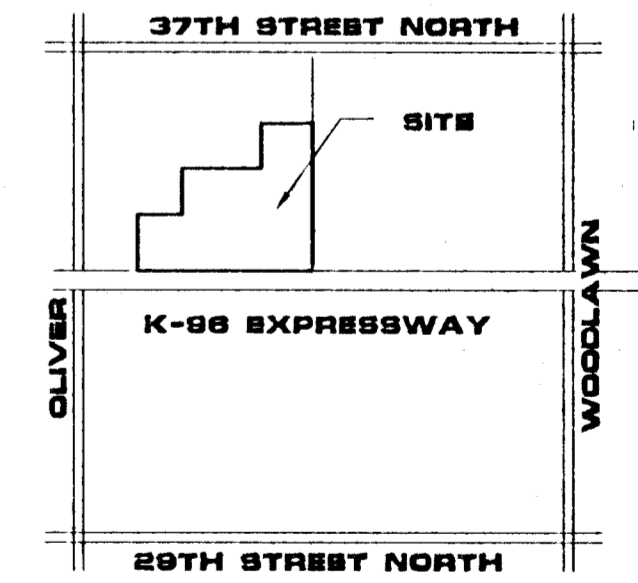
660' South of the NE Corner, NW/4 Section 36-26-1E

Chisholm Trail Church of Christ
Zoning: SF-20 Single Family



BENCHMARK:
City of Wichita Datum
Square set in SW corner of east headwall RCBC crossing Oliver 133 feet S of RR
Elevation 117.5

Chisholm Creek Park
Zoning: SF-5 Single Family



Vicinity Map

Preliminary Plat
Great Plains Business Park 2nd Addition - Replat

An Addition to Wichita-Sedgwick County, Kansas
Date: January 31, 2002

Property Owner:
Great Plains Ventures, Inc.
5200 E. 35th Street North
Wichita, KS 67220