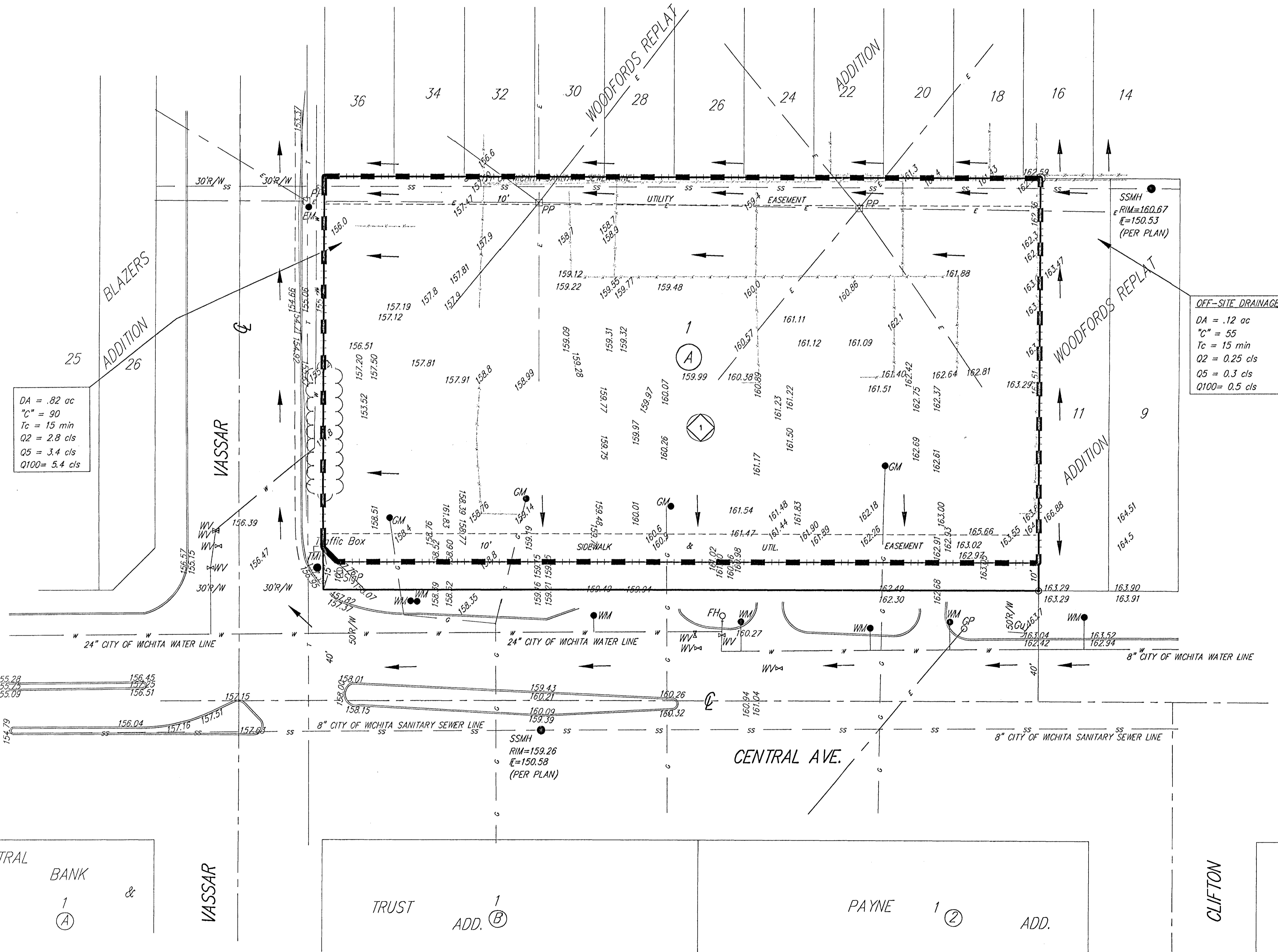
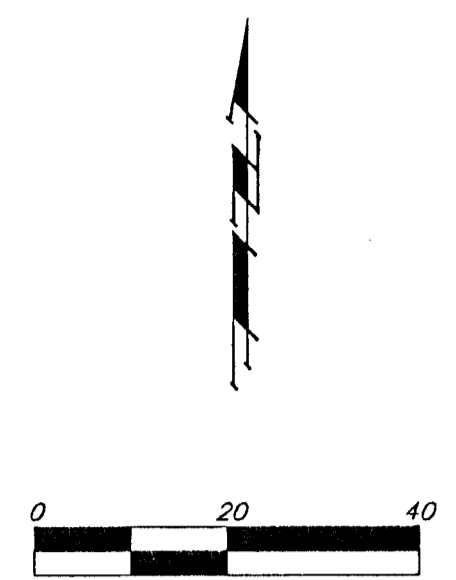


# DRAINAGE PLAN

## GRANDVIEW TERRACE 2ND ADDITION

### WICHITA, SEDGWICK COUNTY, KANSAS

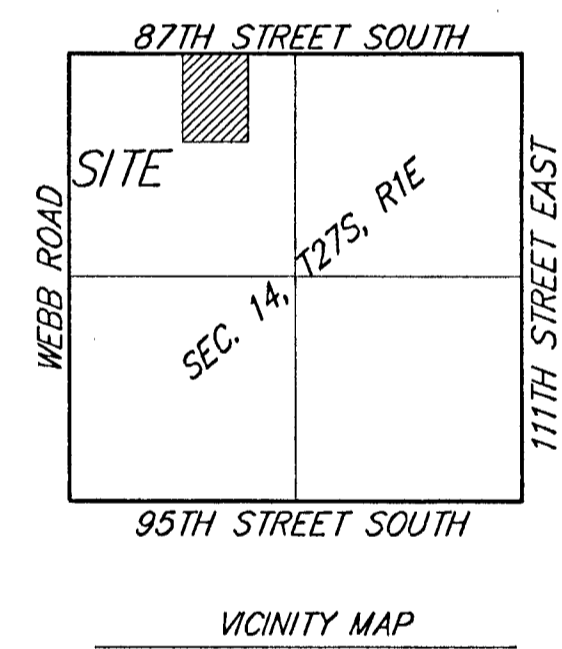


DA = .82 ac  
 "C" = 90  
 Tc = 15 min  
 Q2 = 2.8 cfs  
 Q5 = 3.4 cfs  
 Q100 = 5.4 cfs

**OFF-SITE DRAINAGE**  
 DA = .12 ac  
 "C" = 55  
 Tc = 15 min  
 Q2 = 0.25 cfs  
 Q5 = 0.3 cfs  
 Q100 = 0.5 cfs

- ◆ = #4 REBAR W/ "BAUGHMAN" CAP (FOUND)
- = #4 REBAR W/ "BAUGHMAN" CAP (SET)
- ⊙ = #4 REBAR (FOUND)
- ⊗ = 1" IRON (FOUND)
- = 1/2" IRON (FOUND)
- ⊠ = "P-K" NAIL & SHINER IN STUMP (FOUND)

- DRAINAGE LEGEND:**
- ⊗ = Basin I.D.
  - = Property Flow
  - = Basin Delineation



CENTRAL BANK & VASSAR

TRUST ADD. 1

PAYNE ADD. 1

CLIFTON