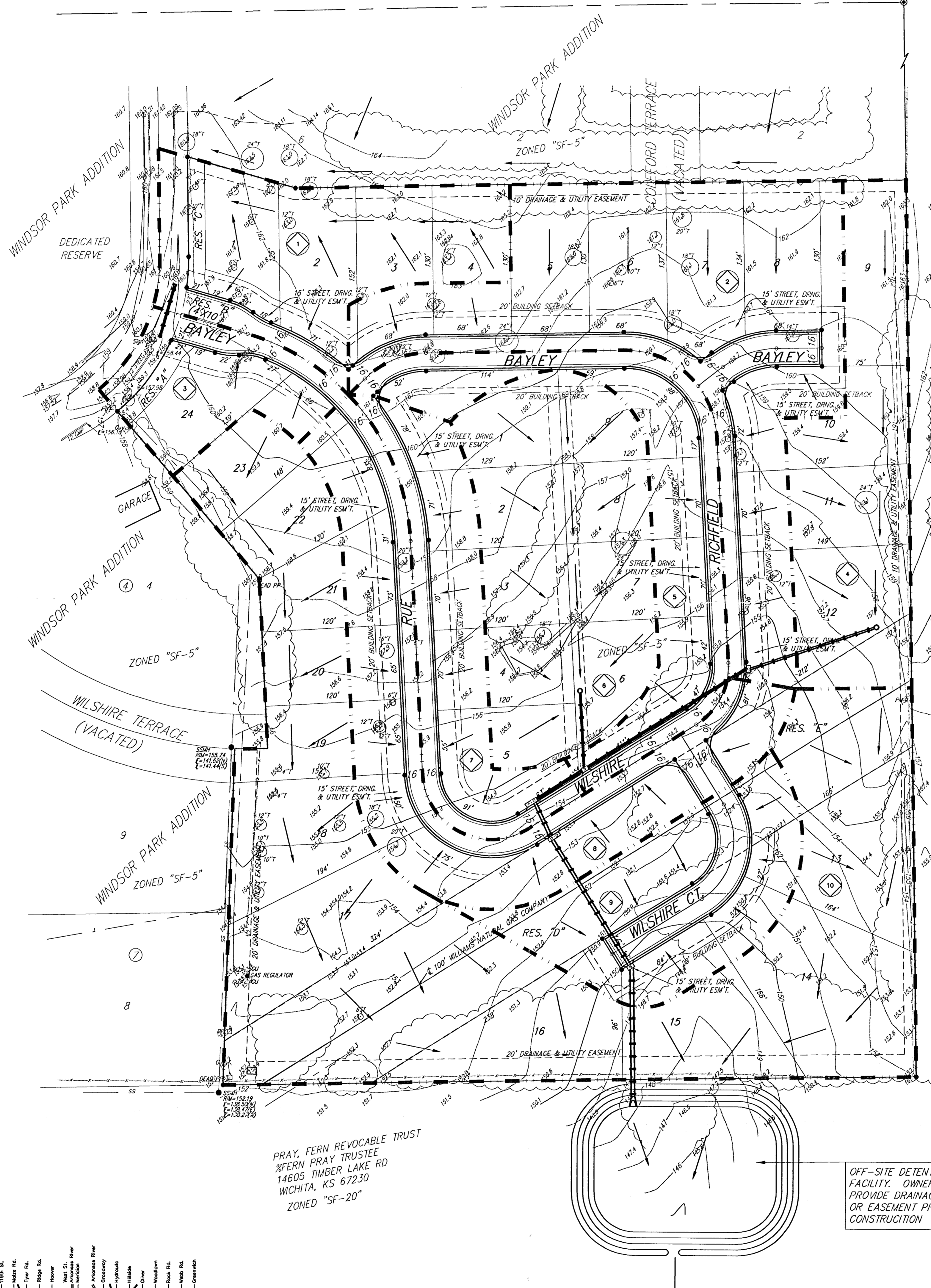


DRAINAGE CONCEPT GRACE PARK WICHITA, SEDGWICK COUNTY, KANSAS



DATE OF PREPARATION: 18 NOVEMBER 2002
 DATE OF IMPROVEMENT: 18 OCTOBER 2002
 CONTOUR INTERVALS = 1 FOOT

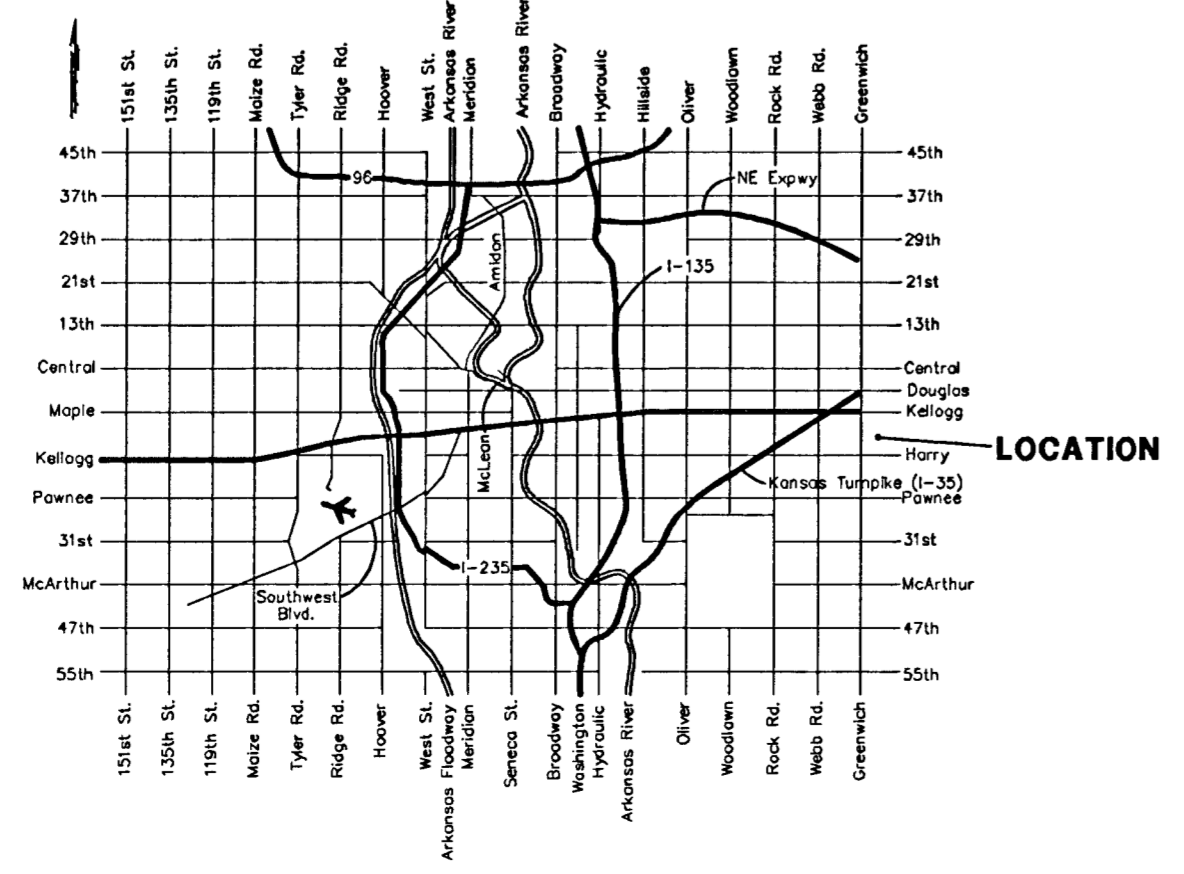
CONTRACT PURCHASER:
 Pinnacle Construction Group
 Mike Frey
 1223 N. Rock Road
 Building E, Suite 100
 Wichita, Kansas 67206

- EB □ = Electric Box
- GM ● = Gas Meter
- GP ● = Guard Post (Ballard)
- GA ● = Guy Anchor
- GV ● = Guy Valve
- LP ○ = Light Pole
- FM ● = Fitting Marker
- PP □ = Power Pole
- SP ● = Sign
- SSM ● = Sanitary Sewer Manhole
- T ○ = Tree
- = #4 REBAR W/ "BAUGHMAN" CAP (FOUND)
- = #4 REBAR W/ "BAUGHMAN" CAP (SET)
- = #5 REBAR W/ "WEEC" CAP (FOUND)
- △ = 1" IRON (FOUND)
- X = 1/2" IRON (FOUND)
- = 19" x 19" MAIL & SHIMMER IN STUMP (FOUND)
- = BOLT (FOUND)
- = RAILROAD SPIKE (FOUND)
- = #4 REBAR (FOUND)
- (M) = MEASURED
- (D) = DECORATED
- (P) = PLATED
- (C) = CALCULATED

INTERNATIONAL TRADING, INC.
 BLDG. 2200 STE. 204
 2500 N. ROCK RD.
 WICHITA, KS 67226
 ZONED "SF-5"

PRAY, FERN REVOCABLE TRUST
 28ERN PRAY TRUSTEE
 14605 TIMBER LAKE RD
 WICHITA, KS 67230
 ZONED "SF-20"

OFF-SITE DETENTION
 FACILITY: OWNER SHALL
 PROVIDE DRAINAGE AGREEMENT
 OR EASEMENT PRIOR TO
 CONSTRUCTION



Basin ID	Basin Area (acres)	Rational Method Coefficients			Peak Flowrate		
		2-yr	5-yr	100-yr	2-yr cfs	5-yr cfs	100-yr cfs
1	0.8	0.48	0.52	0.74	1.5	1.8	4
2	1.7	0.48	0.52	0.74	3.1	4.0	9
3	0.4	0.48	0.52	0.74	0.7	0.9	2
4	0.8	0.48	0.52	0.74	1.5	1.9	4
5	0.7	0.48	0.52	0.74	1.3	1.7	3.8
6	1.1	0.48	0.52	0.74	2.0	2.6	6.0
7	0.6	0.48	0.52	0.74	1.1	1.4	3.3
8	1.1	0.48	0.52	0.74	2.0	2.6	6
9	0.7	0.48	0.52	0.74	1.3	1.7	3.8
10	3.2	0.48	0.52	0.74	5.9	7.6	17